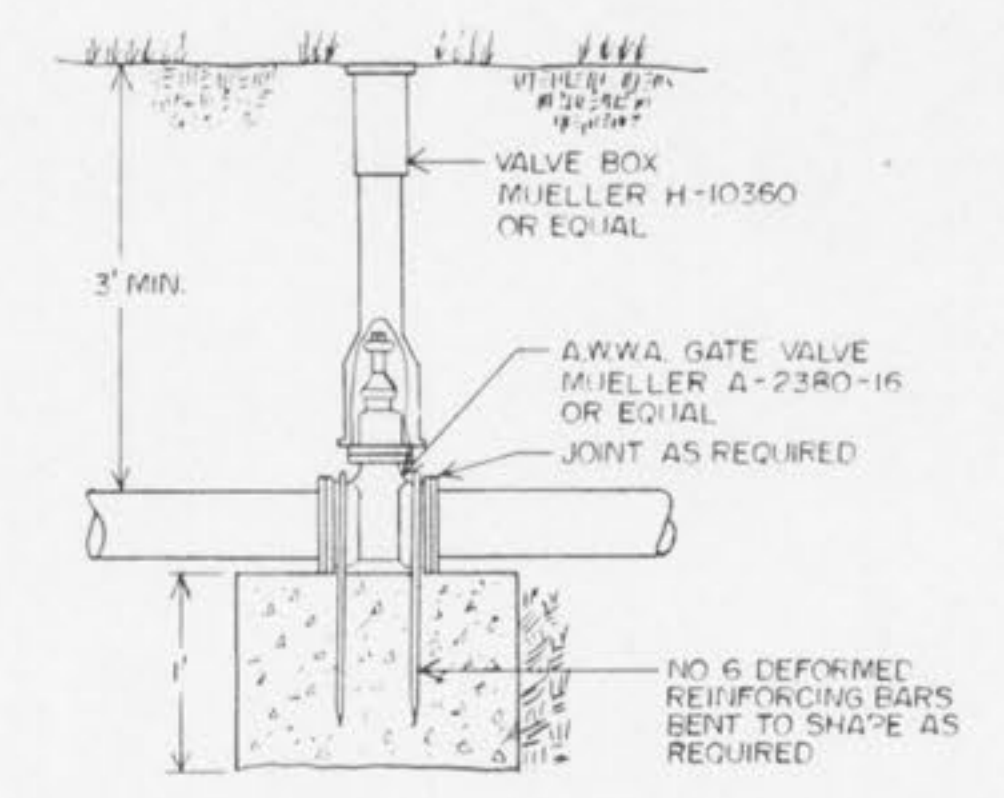
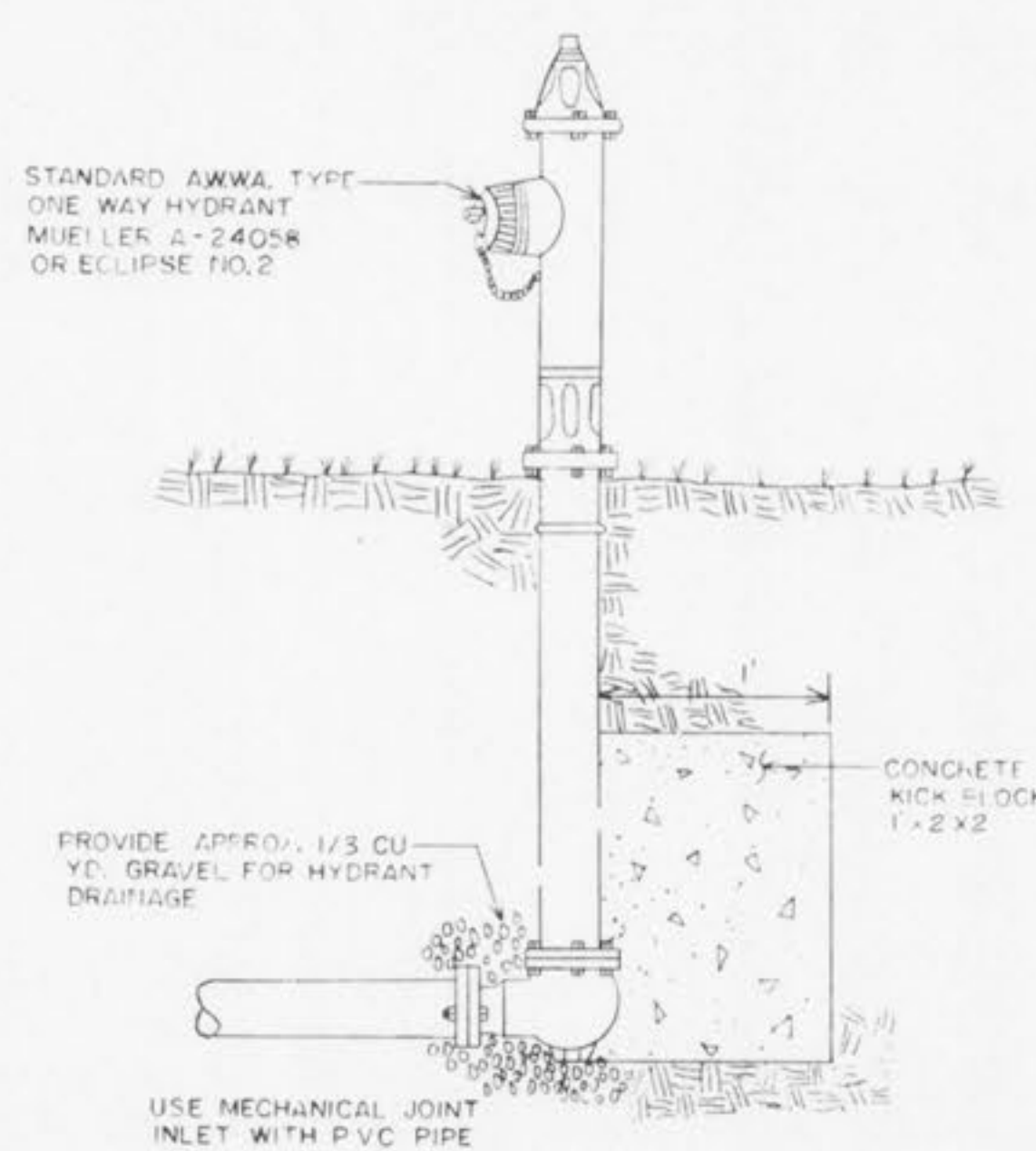


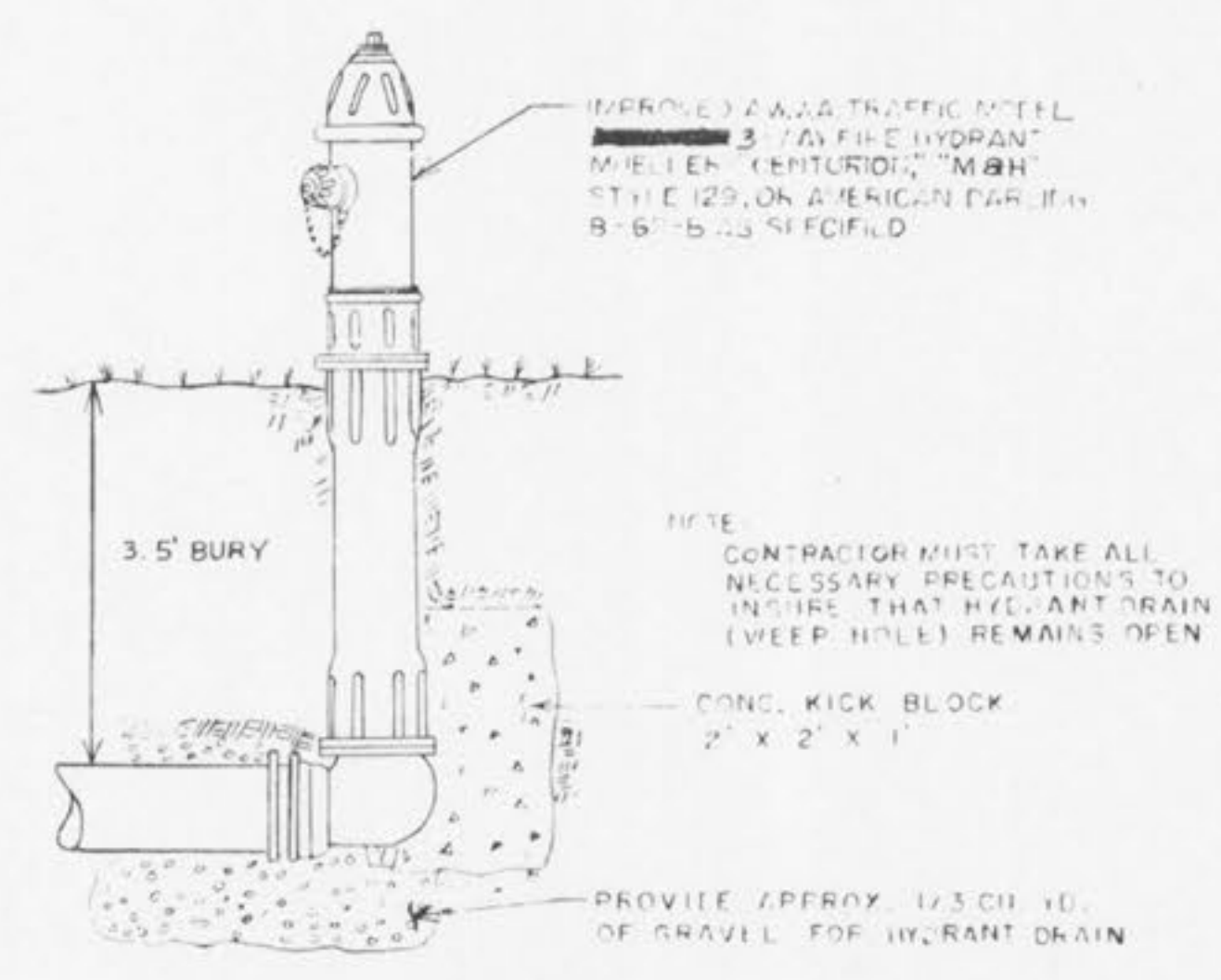
**TYPICAL WATER MAIN INSTALLATION DETAILS**  
NO SCALE



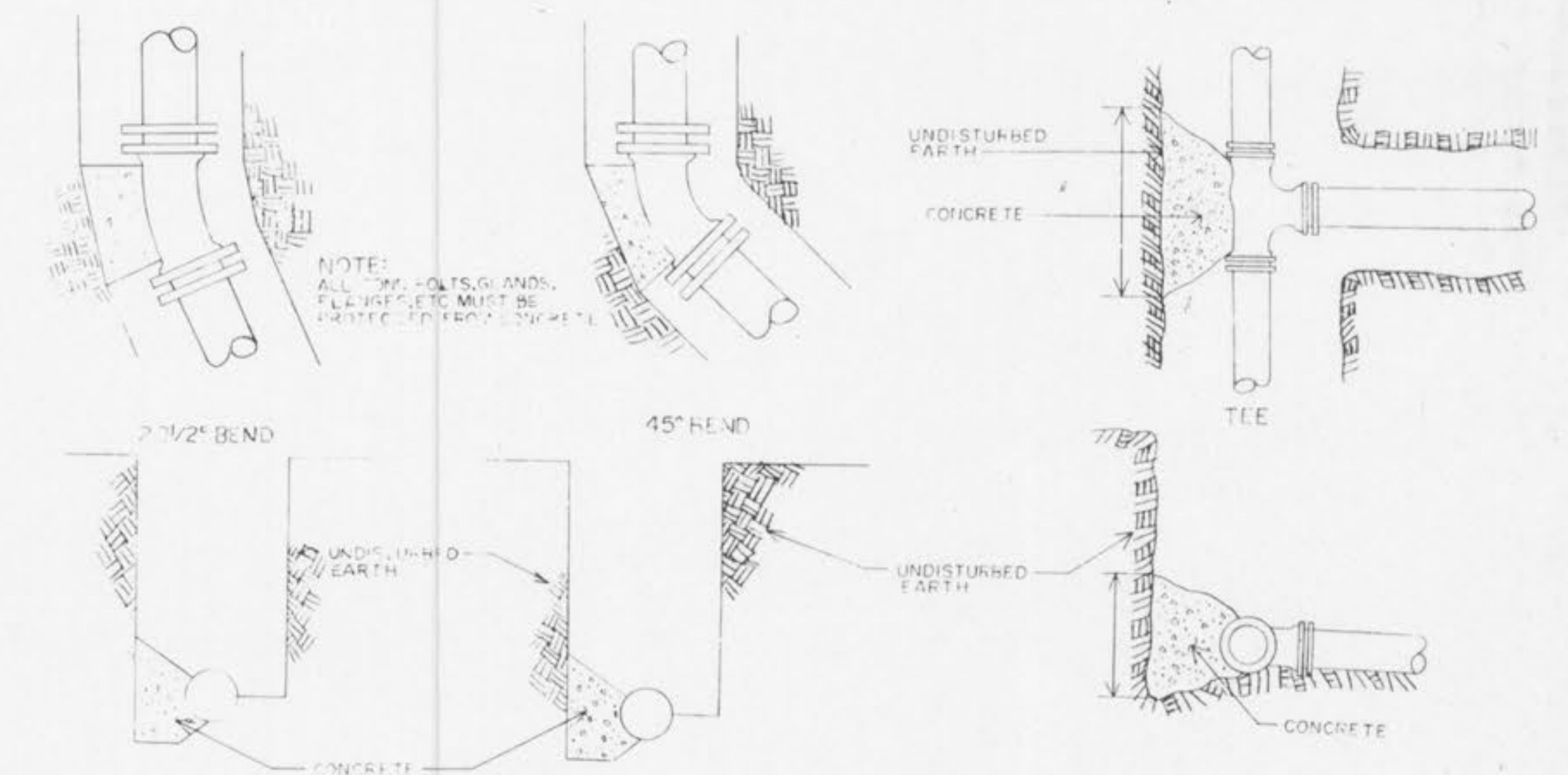
**GATE VALVE W / THRUST BLOCK DETAIL**  
NO SCALE



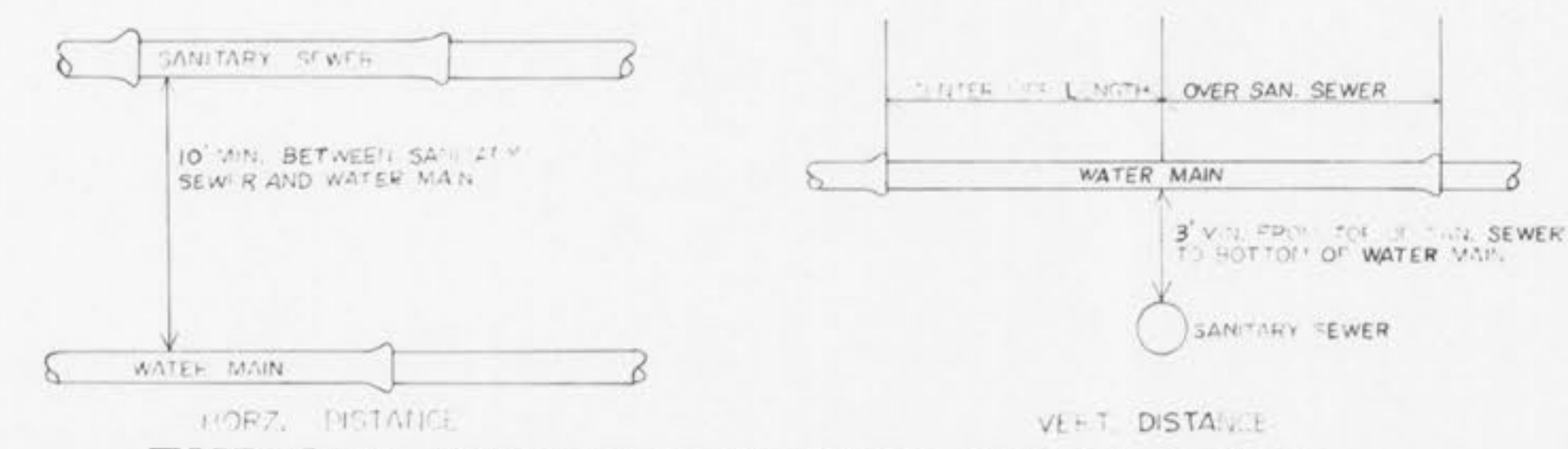
**FLUSHING HYDRANT**  
NO SCALE



**FIRE HYDRANT INSTALLATION DETAIL**  
NO SCALE



**TYPICAL THRUST BLOCK DETAIL**  
NO SCALE



**TYPICAL WATER & SEWER SEPARATION**  
NO SCALE

| WATER SIZE (DIAMETER IN INCHES) | TYPICAL THRUST BLOCK BEARING DIMENSIONS TO BEAR AGAINST UNDISTURBED EARTH |              |           |           |           |
|---------------------------------|---|--------------|-----------|-----------|-----------|
|                                 | 45° BEND  | 22 1/2° BEND | TEE       | VALVE     | CROSS     |
| 2"                              | .5' x 1'  | .5' x 1'     | .5' x 1'  | .5' x 1'  | .5' x 1'  |
| 4"                              | 1' x 1'   | 1' x 1'      | 2' x 1'   | 2' x 1'   | 1' x 1'   |
| 6"                              | 1.5' x 1'   | 1' x 1'      | 2' x 1'   | 2' x 1'   | 1' x 1'   |
| 8"                              | 2' x 1'   | 1' x 1'      | 2' x 2.5' | 2' x 2'   | 1' x 1.5' |
| 10"                             | 2' x 2.5'   | 1.5' x 2'    | 2' x 3.5' | 2' x 3'   | 2' x 2'   |
| 12"                             | 2' x 3.5'   | 1.5' x 2.5'  | 3' x 3.5' | 3' x 3'   | 2' x 3'   |
| 16"                             | 3' x 4'   | 2' x 3'      | 4' x 4.5' | 3' x 4.5' | 3' x 3.5' |

ST. CHARLES COUNTY  
PUBLIC WATER SUPPLY DISTRICT  
NO. 2

Revised from Drawing by: COCHRAN ENGINEERING COMPANY  
WASHINGTON, MISSOURI

APPROVED:

**TYPICAL WATER INSTALLATION DETAILS**

|         |          |           |           |
|---------|----------|-----------|-----------|
| DATE    | SCALE    | SHEET NO. | REVISIONS |
| FEB. 88 | AS SHOWN |           |           |

24  
25