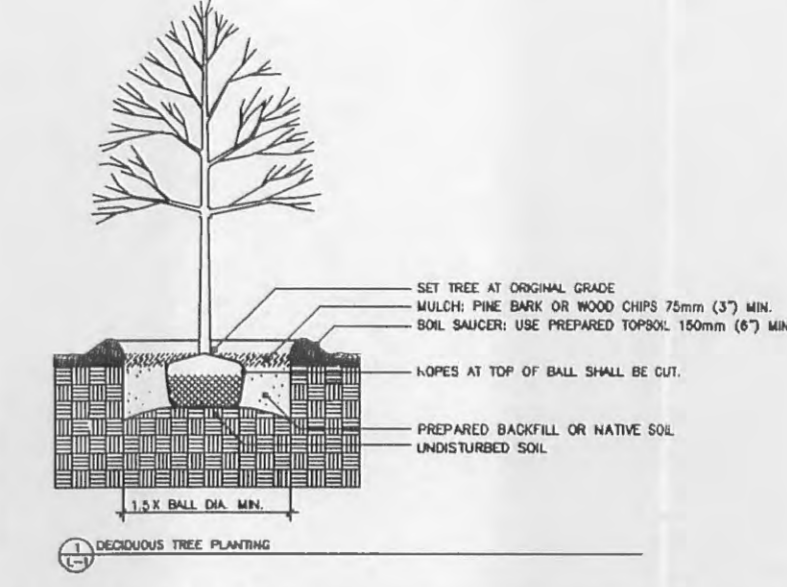
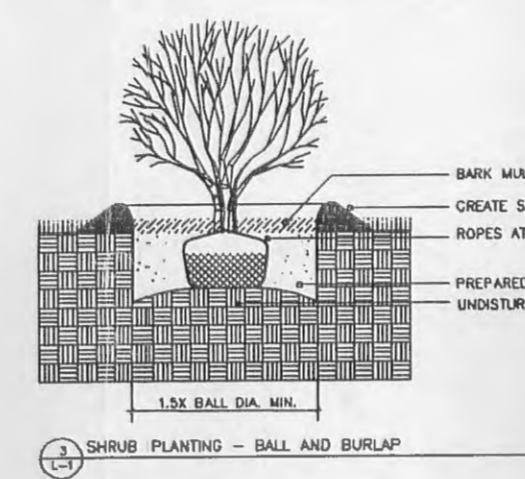
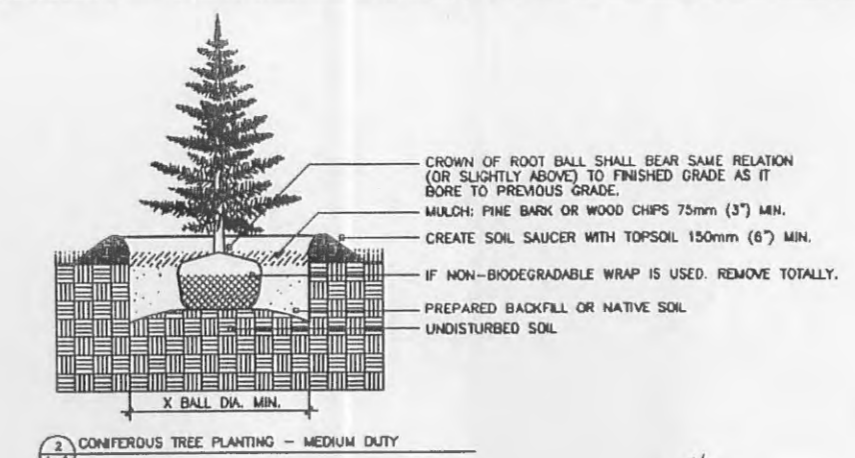


PLANT MATERIAL LIST			
QTY.	SYMB.	COMMON NAME	SIZE
24	W	WHITE PINE	6"
3	UA	URBANITE ASH	2"
8	AP	AUTUMN PURPLE ASH	2"
9	RS	RED SUNSET MAPLE	2"
25	ZL	ZELKOVA	2"
3	Np	NEWPORT PLUM	2"
6	PP	PURPLE PRINCE CRAB	2"
2	CP	CLEVELAND SELECT PEAR	2"
27	BAY	BAYBERRY	5 GAL
20	GO	GREY OWL JUNIPER	5 GAL
28	CH	CHINA HOLLY	5 GAL
16	GVB	GREEN VELVET BOXWOOD	5 GAL
19	HGI	HENRY'S GARNET ITEA	5 GAL
18	SP	MAGIC CARPET SPIREA	5 GAL
10	MG	MAIDEN GRASS	5 GAL
167	BOX	BOXWOOD	CY
62		IOWA LAKE GRAVEL	LF
20		STEEL EDGING	SY
2,290		BLUEGRASS SOD	

LUMINAIRE SCHEDULE									
Symbol	Label	Qty	Catalog Number	Description	Lamp	File	Lumens	LLF	Watts
□	A	29	AS2 400M SR4SC	ARCHITECTURAL ARM-MOUNTED CUTOFF LUMINAIRE WITH SR4SC REFLECTOR.	ONE 400-WATT CLEAR ED-28 METAL HALIDE, HORIZONTAL POSITION.	Lt10100.ies	32000	0.65	482
□	B	65	AS2 400M SR4SC	ARCHITECTURAL ARM-MOUNTED CUTOFF LUMINAIRE WITH SR4SC REFLECTOR.	ONE 400-WATT CLEAR ED-28 METAL HALIDE, HORIZONTAL POSITION.	Lt10100.ies	32000	0.65	482

NOTE: SOD IS APPROXIMATE, TO BE REMEASURED ONCE CONSTRUCTION IS COMPLETED. ALL PLANTING BEDS TO BE IOWA LAKE GRAVEL WITH WEED BARRIER FABRIC, AND STEEL EDGING AS INDICATED ON PLAN.



CITY OF O'FALLON REQUIREMENTS:

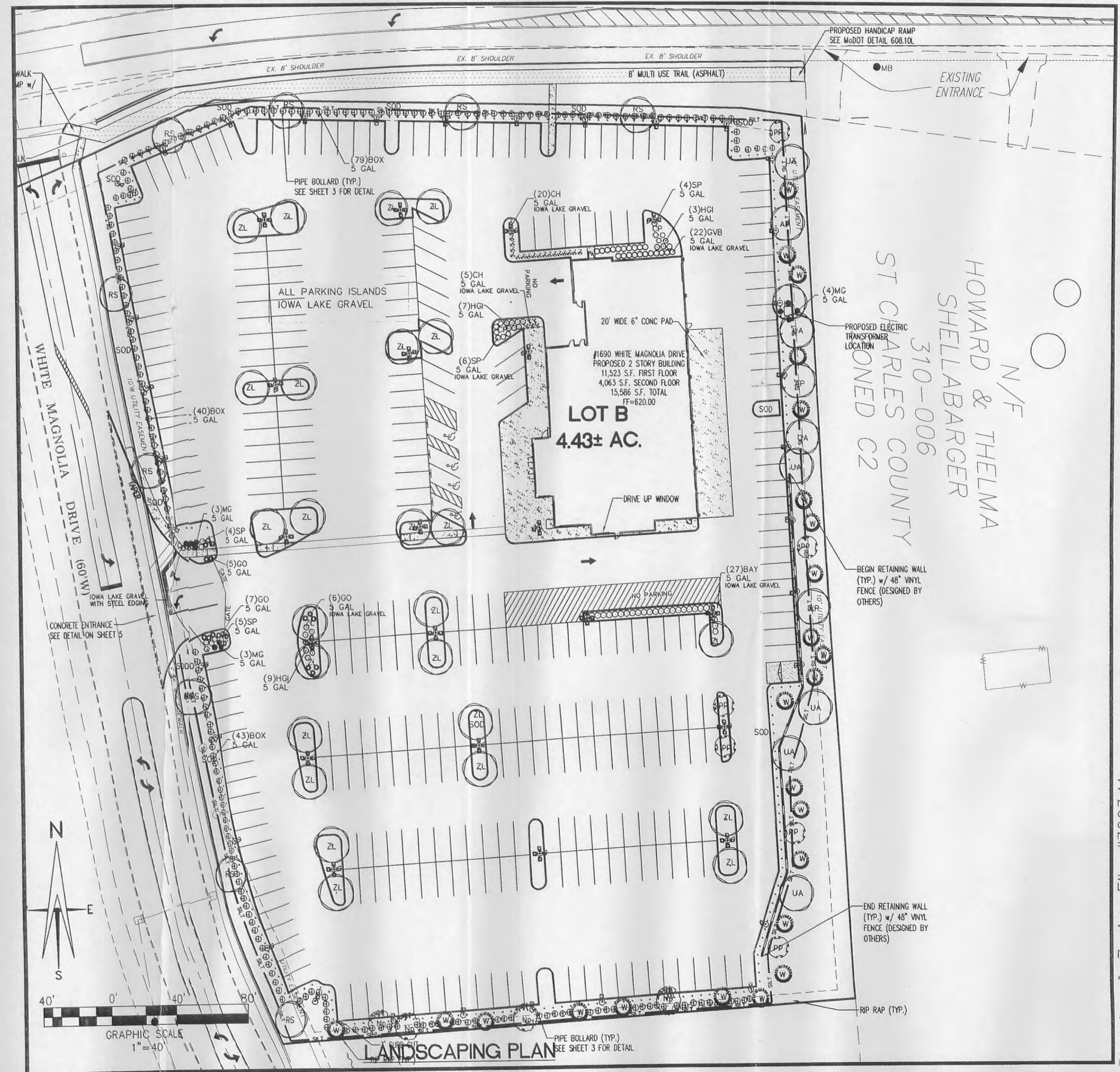
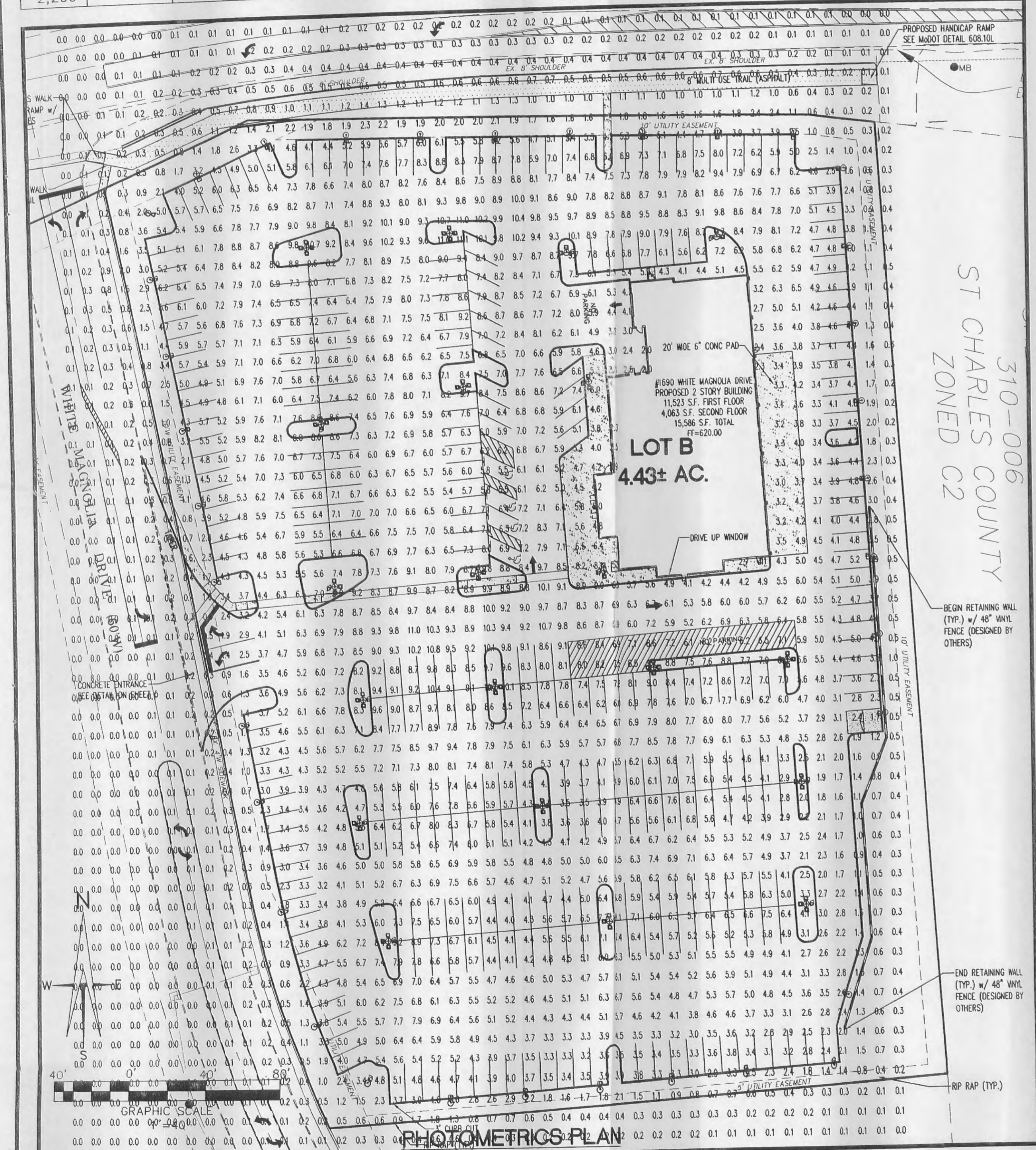
STREET TREES:
1 TREE FOR EVERY 40 LF OF STREET FRONTAGE
715 LF STREET FRONTAGE / 40 LF = 17.875 TREES REQUIRED
18 TREES PROVIDED

OPEN SPACE:
1 TREE FOR EVERY 3,000 SQ. FT.
141,439 SQ. FT. PROPOSED SITE = 3,247 ACRES
-119,132 SQ. FT. PROPOSED BLDGS. & PARKING LOT
22,307 SQ. FT. REMAINING OPEN SPACE
22,307 SQ. FT. / 3,000 SQ. FT. = 7.435 TREES REQUIRED
= 16 TREES PROVIDED

INTERIOR PARKING:
340 PARKING SPACES x 270 = 91,800 SQ. FT.
6% OF 91,800 = 5,508 SQ. FT. REQUIRED LANDSCAPING
INTERIOR PLANTINGS = 7,329 SQ. FT. PROVIDED

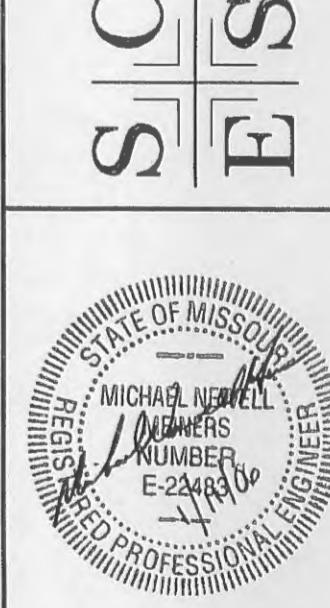
MoDOT
(314) 340-4100
*FIBER OPTICS
MAY BE PRESENT

Call BEFORE you DIG
TOLL FREE
1-800-344-7483
MISSOURI ONE-CALL SYSTEM, INC.



IMPROVEMENT PLANS OF PHASE
ONE OF MAGNOLIA COMMERCIAL
INSTA-CREDIT AUTO MART
CITY OF O'FALLON

ST. CHARLES ENGINEERING & SURVEYING, INC.
801 S. FIFTH STREET, SUITE 202
ST. CHARLES, MO 63301
TEL: (636) 947-0607 FAX: (636) 947-2448



ORDER NO. 04-1441
DATE 9/13/2005
3

Planning & Zoning File #3603.11