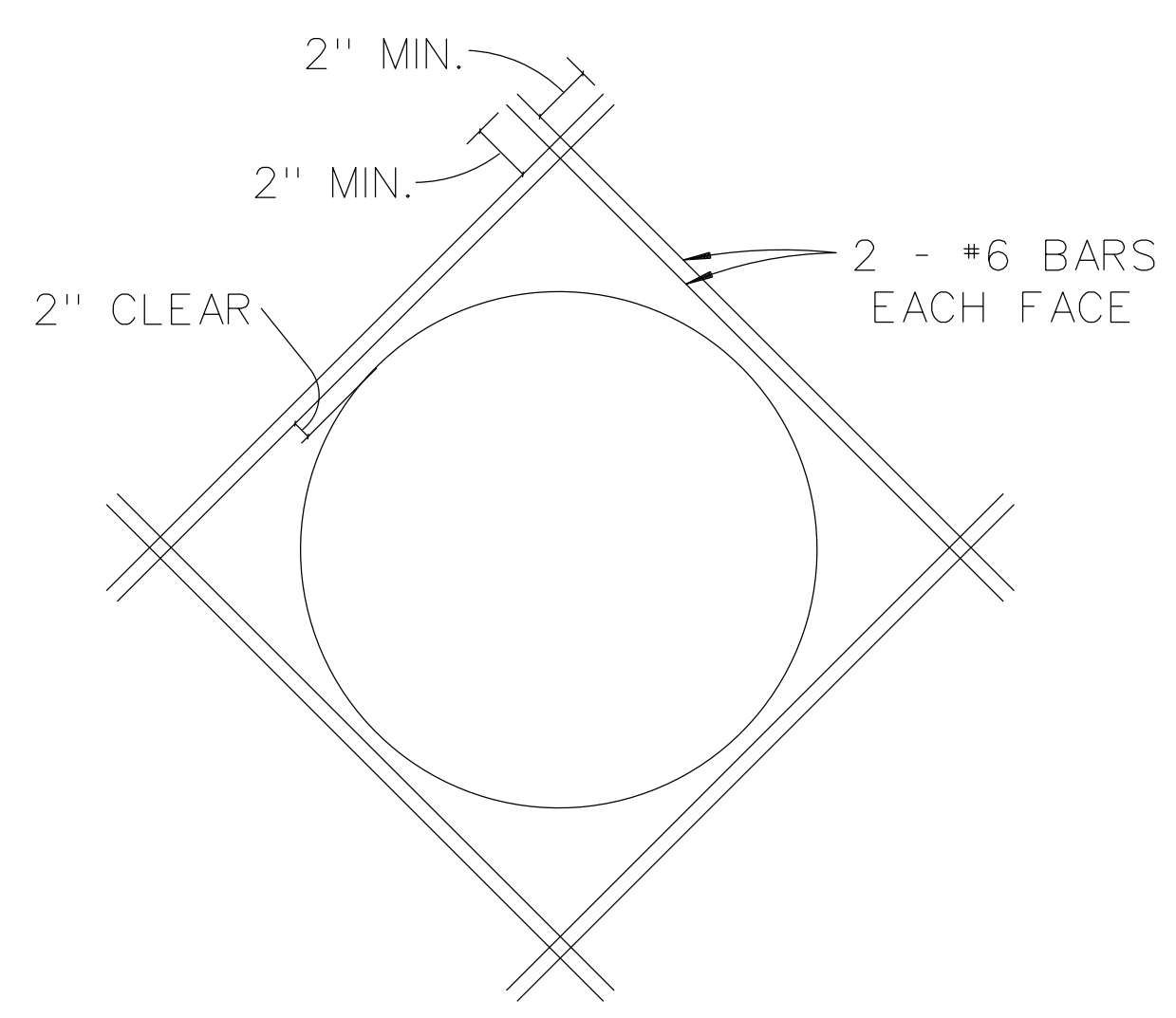
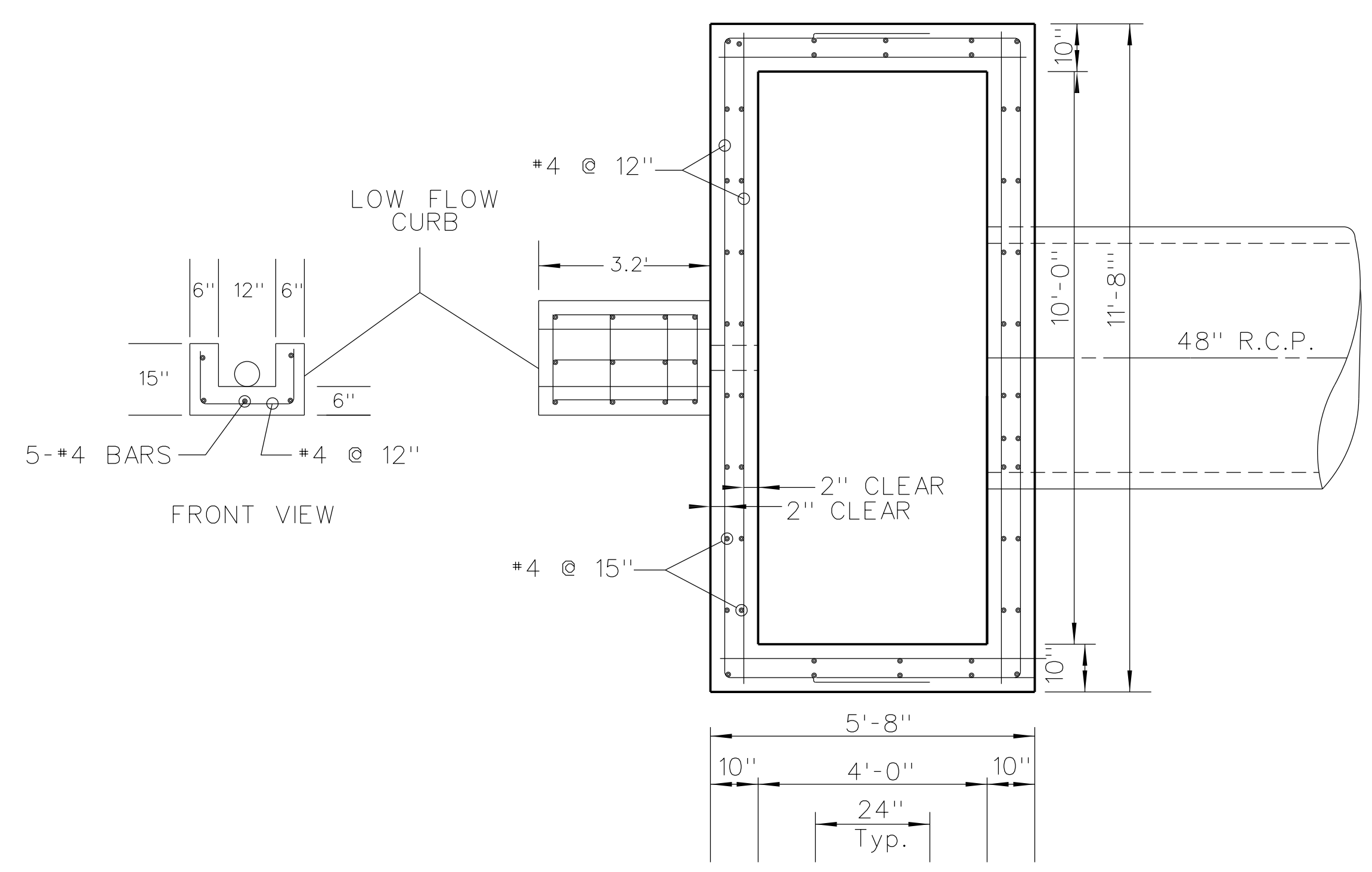


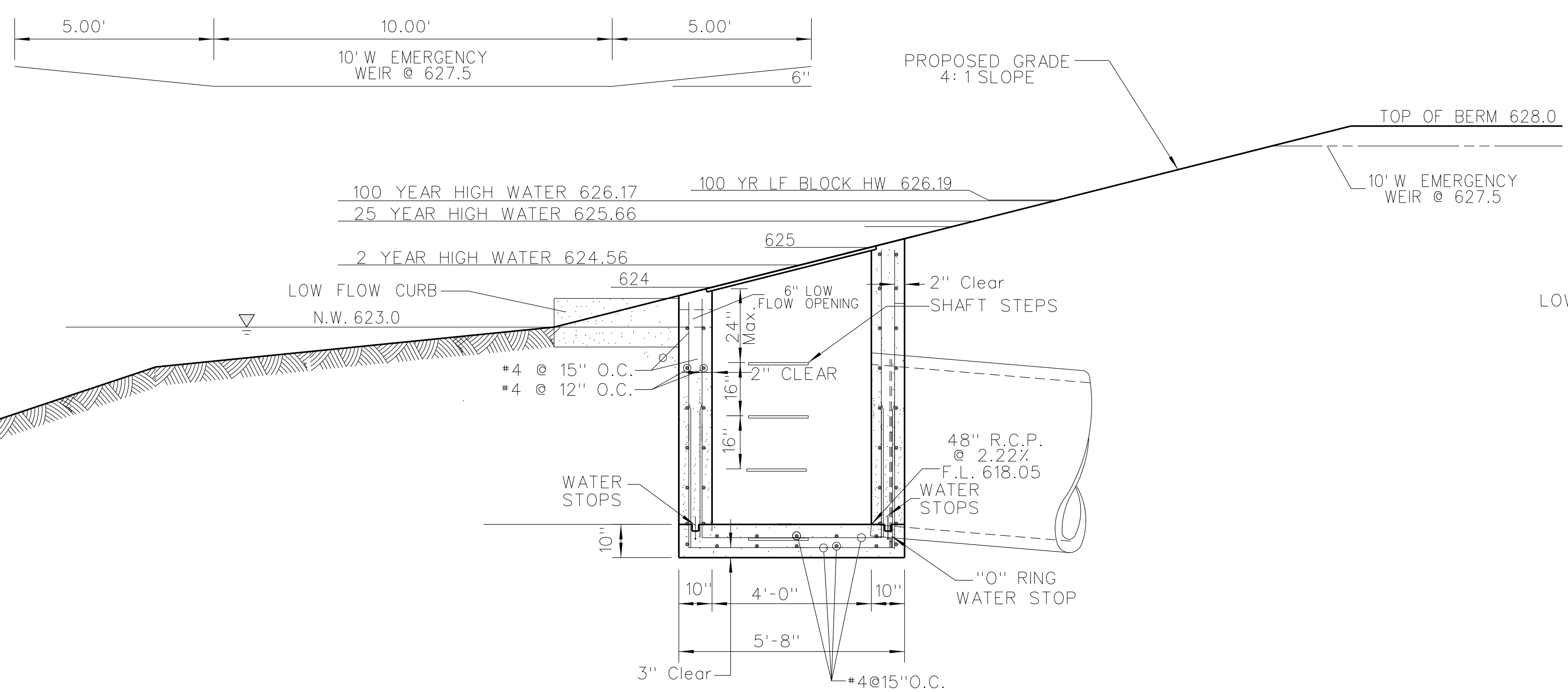
**DETAIL OF CONTINUOUS ANCHOR
FOR ANGLE SEAT & BOLT DOWN GRATE**
N.T.S.



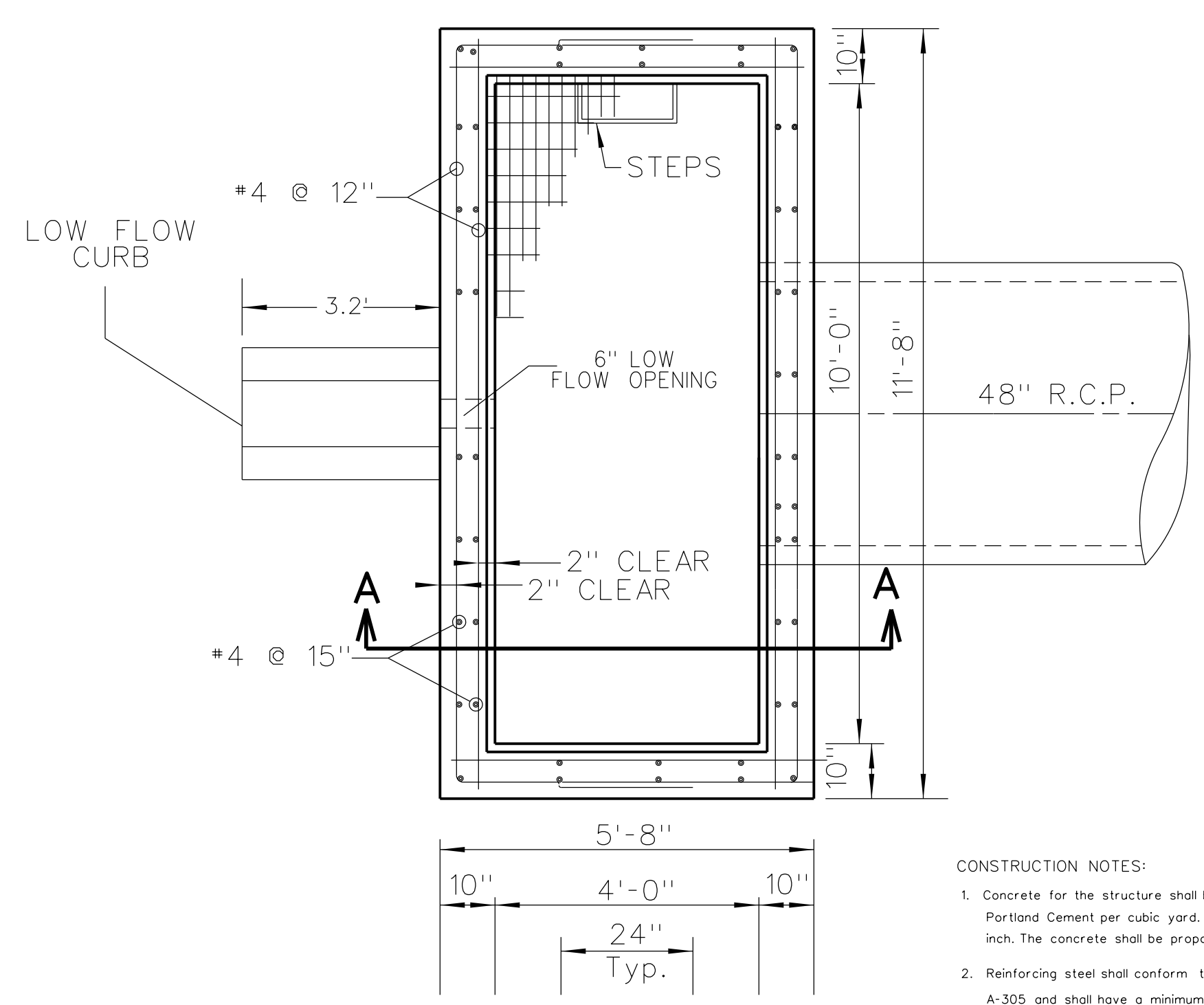
**DETAIL SHOWING REINFORCING
AROUND OPENING**
N.T.S.



STEEL SPLICE DETAIL
NOT TO SCALE



**SECTION A-A
REINFORCED DETENTION
OS 71 BASIN 1**
NOT TO SCALE



ALTERNATE STRUCTURE

TOP VIEW

- CONSTRUCTION NOTES:
- Concrete for the structure shall be "air entrained" and contain at least 6 sacks Class "A" Portland Cement per cubic yard. The concrete shall be placed at a slump of 4 inches +/- 1/2 inch. The concrete shall be proportioned and transported in accordance with ASTM C-94.
 - Reinforcing steel shall conform to ASTM C-615-60 with deformations conforming to ASTM A-305 and shall have a minimum cover of 2 inches except for 3 inches where concrete is poured against earth.
 - Laps and/or splices in reinforcing steel shall be a minimum of 30 bar diameters.
 - Keyed joints shown are to be 2-inch x 2-inch keyed construction joints.
 - fs = 24,000 psi.
 - fc = 3,750 psi.
 - Exposed edges to have a 3/4-inch chamfer.
 - Contractor to provide for bypass of stormwater during construction of structure.
 - All soil specifications shall be directed by soils engineer.



H:\CAD\22450\22450.dwg - Master Model 3/7/2022 2:47:59 PM Plotted by jpeakes Plot Scale: 2.000000 x 1.000000 Plot Driver: volz15 pld.plt Color: 255,255,255