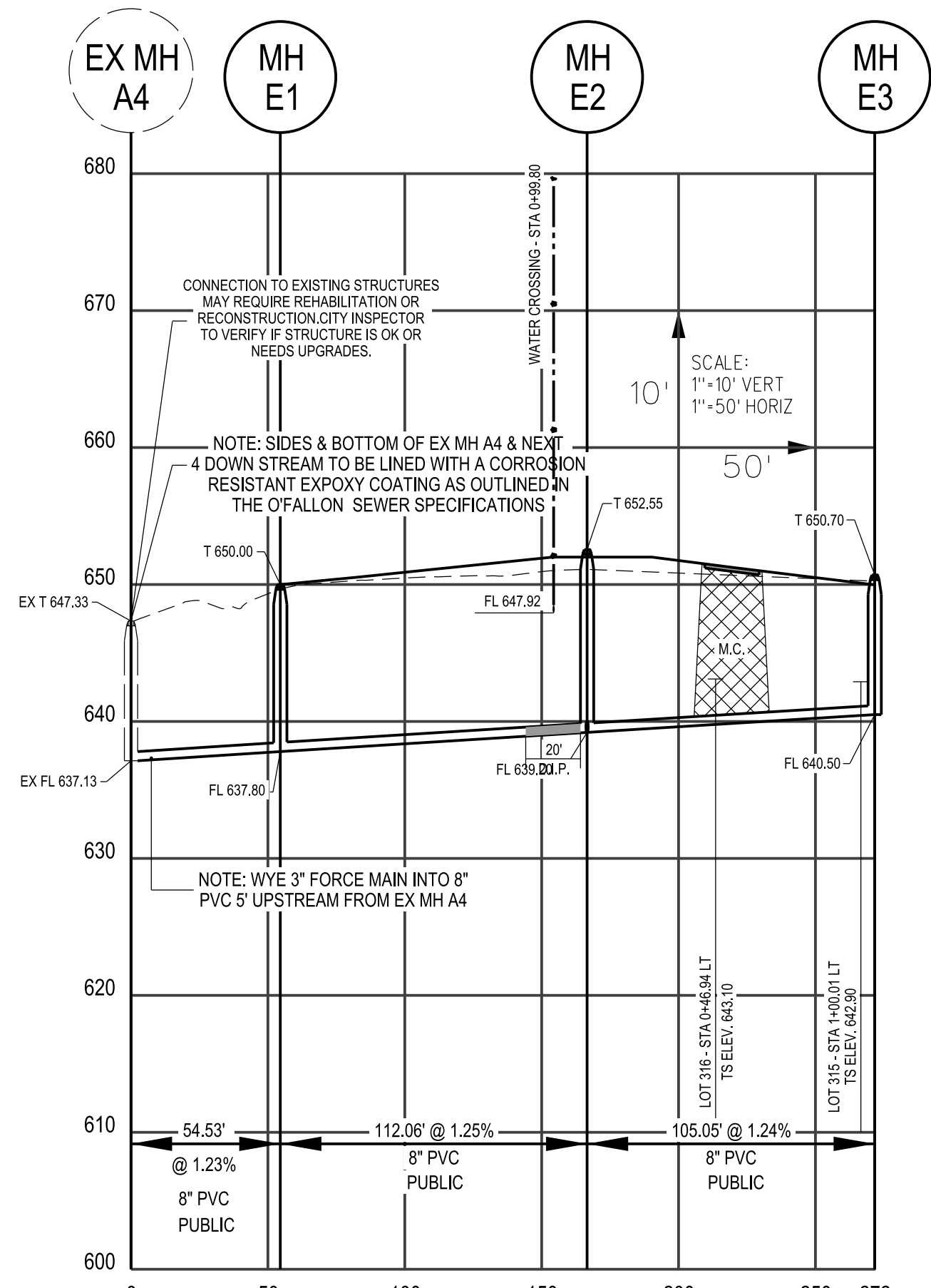
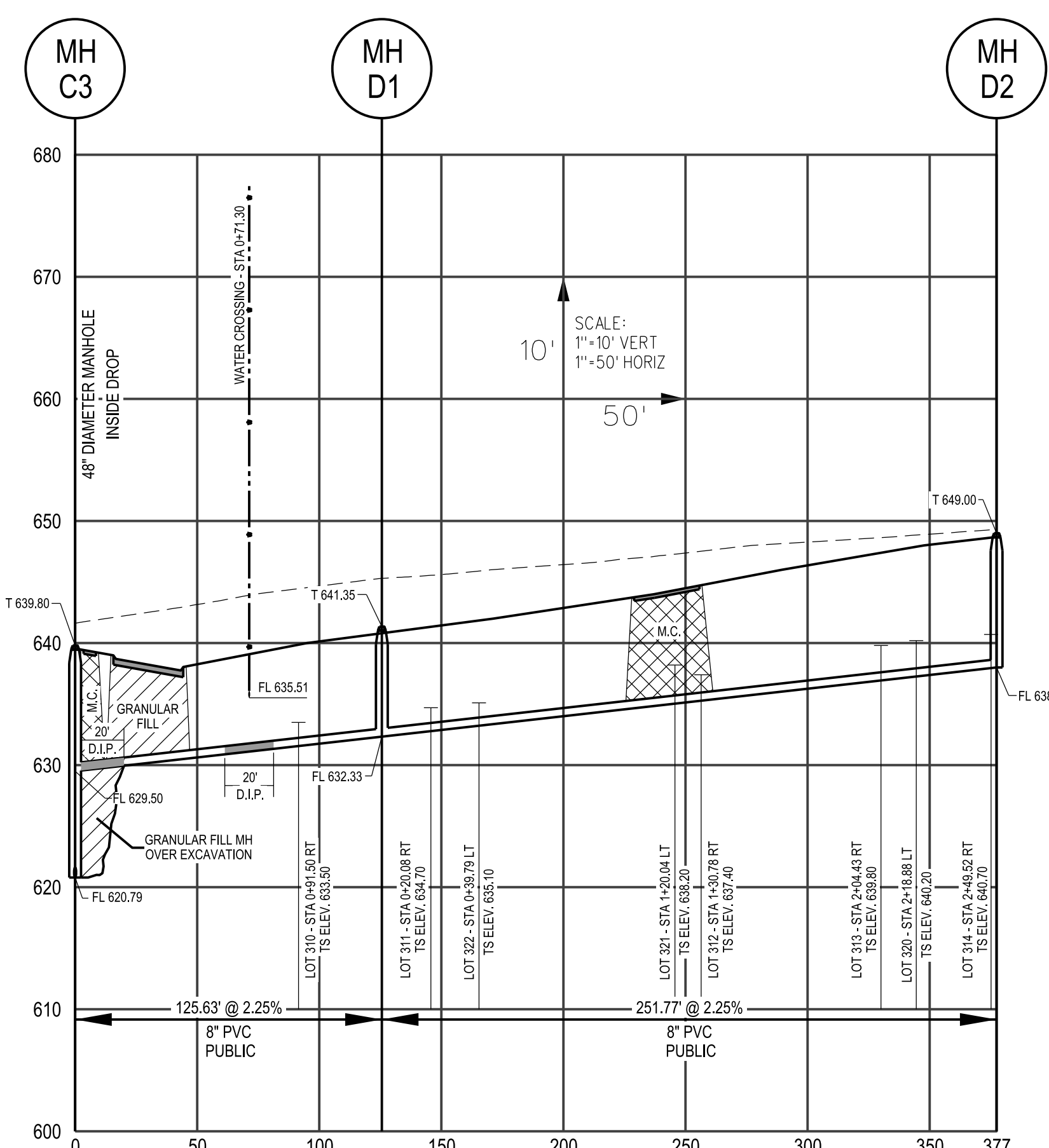
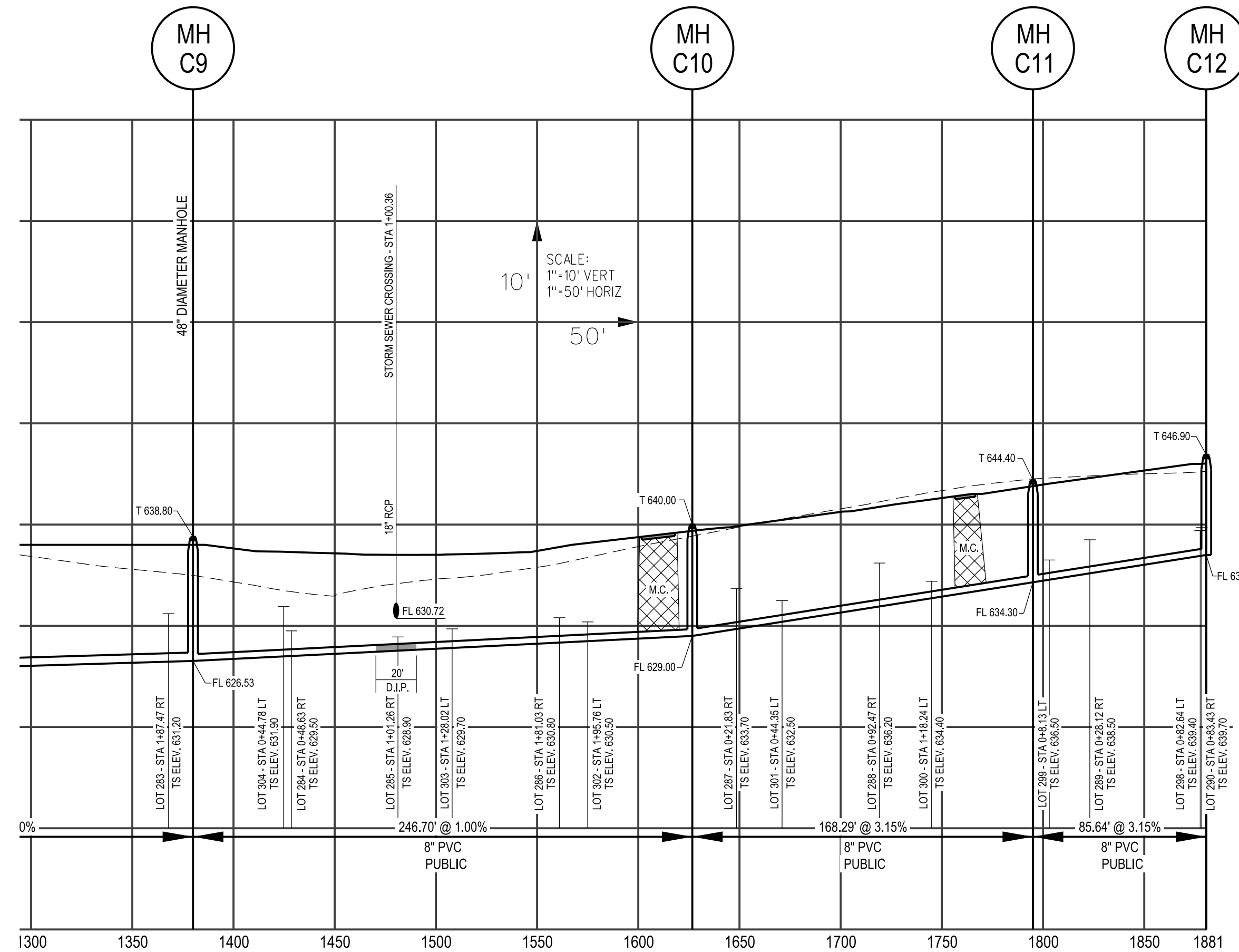


ALL INSTALLATIONS AND CONSTRUCTION OF THE SANITARY SEWER SHALL CONFORM TO THE APPROVED ENGINEERING DRAWINGS. HOWEVER, IF THE DEVELOPER CHOOSES TO MAKE MINOR MODIFICATIONS IN DESIGN AND/OR SPECIFICATIONS DURING CONSTRUCTION, HE/SHE SHALL MAKE SUCH CHANGES AT HIS/HER OWN RISK, WITHOUT ANY ASSURANCE THAT THE CITY ENGINEER WILL APPROVE THE COMPLETED INSTALLATION OR CONSTRUCTION. IT SHALL BE THE RESPONSIBILITY OF THE DEVELOPER TO NOTIFY THE CITY ENGINEER OF ANY CHANGES FROM THE APPROVED DRAWINGS. THE DEVELOPER MAY BE REQUIRED TO CORRECT THE INSTALLED IMPROVEMENTS SO AS TO CONFORM TO THE APPROVED ENGINEERING DRAWINGS. THE DEVELOPER MAY REQUEST A LETTER FROM THE CONSTRUCTION INSPECTION DIVISION REGARDING ANY FIELD CHANGES APPROVED BY THE CITY INSPECTORS.

ALL SANITARY LATERALS SHALL BE CONSTRUCTED OF SCHEDULE 40 PVC AND LAIN AT A MINIMUM OF 2%
 ALL SANITARY LATERALS AND SANITARY MAINS THAT CROSS UNDER THE PAVEMENT MUST HAVE PROPER GRANULAR BACKFILL AND REQUIRED COMPACTION

H:\CAD\24400-22449-22450\mp\Drawings\22450 - Sanitary Sewer.dwg - Master Model - 3/7/2022 - 2:46:56 PM - Plotted by jstevens - Plot Scale: 50.000000 - / in. Plot Driver: Vplot25 - PDF - mfcfig - Pen Table: Vplot15 - PDF - btl

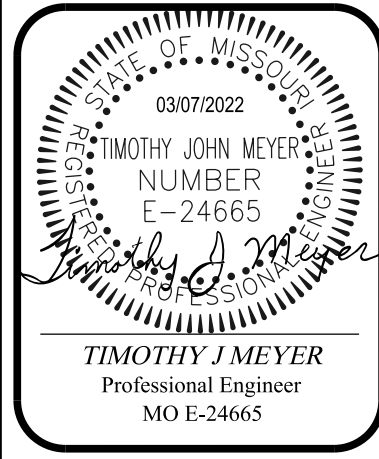


SANITARY SEWER

PHASE 3

01/20/2022
 C21

INVERNESS



VOLZ Incorporated
 ENGINEERS
 LAND PLANNING
 LAND SURVEYING
 TRANSPORTATION MANAGEMENT
 10848 Indian Head Trl. Blvd.
 St. Louis, Missouri 63132
 314-426-0212 Main
 www.volzinc.com
 Authority #203

MCKELVEY HOMES
 Building A Tradition Of Excellence Since 1898
 218 CHESTERFIELD TOWNE CENTRE
 CHESTERFIELD, MISSOURI 63005
 (636) 336-6660