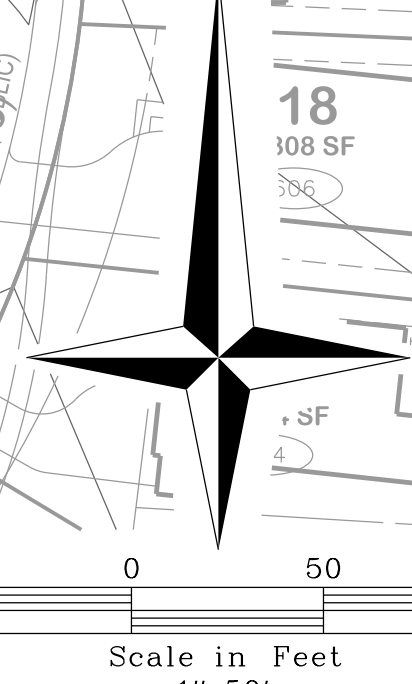




MISSOURI ONE-CALL 1-800-344-7483

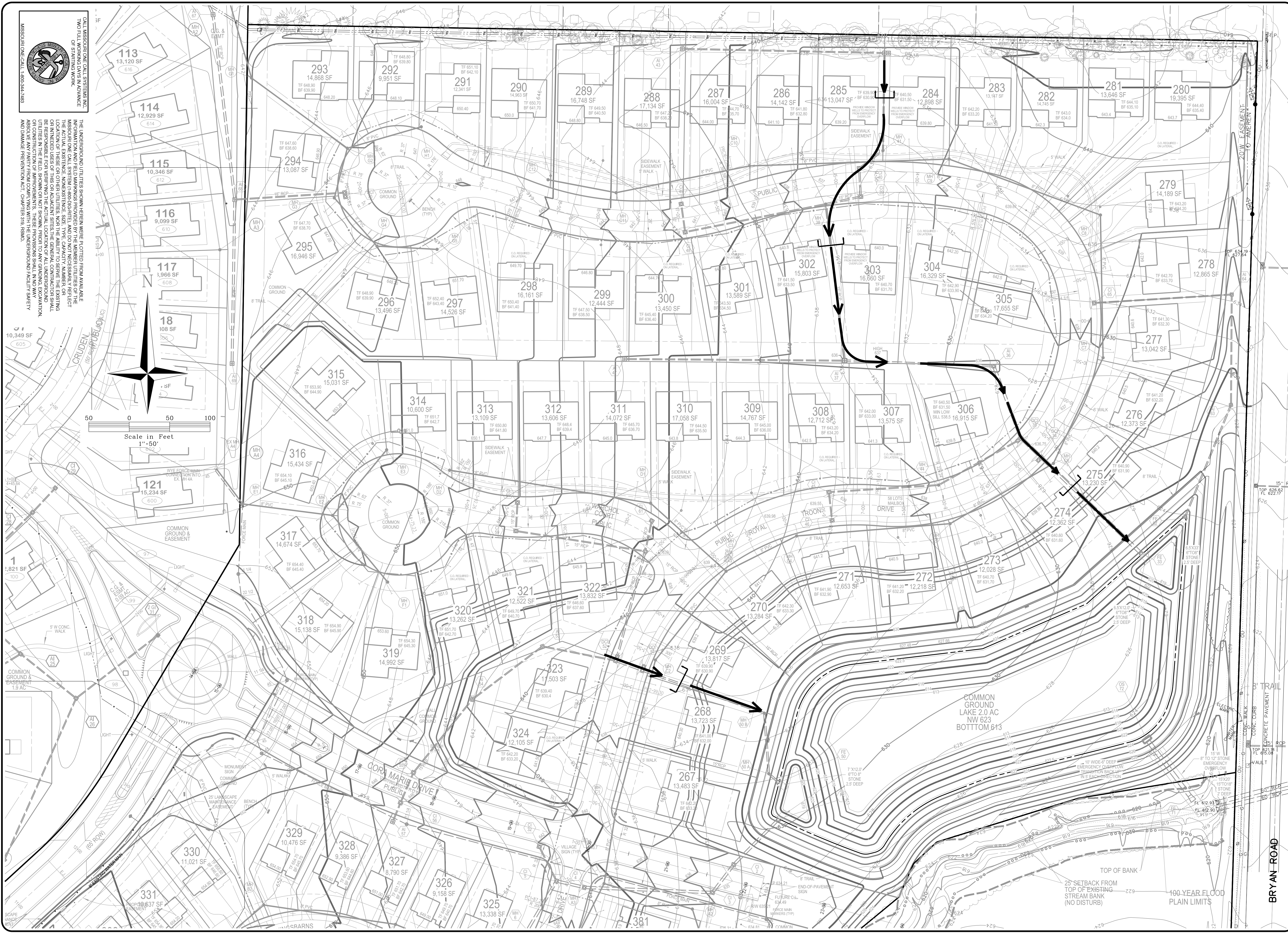
CALL MISSOURI ONE-CALL SYSTEMS INC. TWO FULL BUSINESS DAYS IN ADVANCE TO REPORT ANY UNKNOWN UTILITIES.

THE UNDERGROUND UTILITIES SHOWN HEREIN WERE PLOTTED FROM AVAILABLE INFORMATION AND FIELD MARKS PROVIDED BY THE MEMBER UTILITIES OF THE MISSOURI ONE-CALL SYSTEM (1-800-344-7483), AND DO NOT NECESSARILY REFLECT THE LOCATION OF ANY UTILITIES. THE USER OF THIS PLAN SHALL BE RESPONSIBLE FOR VERIFYING THE ACTUAL LOCATION OF ALL UNDERGROUND UTILITIES IN THE FIELD SHOWN ON THIS PLAN PRIOR TO ANY GRADING, EXCAVATION, OR ANY OTHER CONSTRUCTION WORK. THE USER SHALL BE RESPONSIBLE FOR OBTAINING ANY NECESSARY PERMITS AND DAMAGE PREVENTION ACT, CHAPTER 319, RSMO.



Scale in Feet
1" = 50'

H:\CAD\224400\224400\mp\Phase 3\224400.mxd, Master Model 3/7/2022, 2:47:19 PM, Plotted by: jstevens, Plot Scale: 30.000000, 7.00, Plot Driver: vort5 PDF.plt, Pen Table: vort5 PDF.tbl



MCKELVEY
H O M E S
218 CHESTERFIELD TOWNE CENTRE
CHESTERFIELD, MISSOURI 63005
(636) 336-9900

VOLZ
Incorporated
ENGINEERS
LAND PLANNING
LAND SURVEYING
TRANSPORTATION
MANAGEMENT
10848 Indian Head Trl, Blvd.
St. Louis, Missouri 63132
314.426.0212 Main
www.volzinc.com
Authority #203

03/07/2022
TIMOTHY J MEYER
Professional Engineer
MO E-24665

INVERNESS

EMERGENCY OVERFLOW
VILLAGE A
1575 BRYAN RD.
PHASE 3
Project # 22450

01/20/2022
C30

BRYAN ROAD

TOP OF BANK
25' SETBACK FROM
TOP OF EXISTING
STREAM BANK
(NO DISTURB)
100-YEAR FLOOD
PLAIN LIMITS

COMMON
GROUND
LAKE 2.0 AC
NW 623
BOTTOM 613

TRAIL

CONCRETE PAVEMENT
VAULT

CONCRETE PAVEMENT

CONCRETE PAVEMENT

CONCRETE PAVEMENT

CONCRETE PAVEMENT

10' WIDE 8" DEEP
EMERGENCY OUTFLOW
TRANSITION BACKUP
IN 5' EACH DIRECTION

8" TO 12" STONE
EMERGENCY OUTFLOW

8" TO 12" STONE
EMERGENCY OUTFLOW

8" TO 12" STONE
EMERGENCY OUTFLOW

7' X 12" 8" TO 12" STONE 2.5' DEEP

7' X 12" 8" TO 12" STONE 2.5' DEEP

7' X 12" 8" TO 12" STONE 2.5' DEEP

7' X 12" 8" TO 12" STONE 2.5' DEEP

8" TRAIL

8" TRAIL

8" TRAIL

8" TRAIL

8" TRAIL

8" TRAIL

8" TRAIL

8" TRAIL

8" TRAIL

8" TRAIL

8" TRAIL

8" TRAIL

8" TRAIL

8" TRAIL

8" TRAIL

8" TRAIL

8" TRAIL

8" TRAIL

8" TRAIL

8" TRAIL

8" TRAIL

8" TRAIL

8" TRAIL

8" TRAIL

8" TRAIL

8" TRAIL

8" TRAIL

8" TRAIL

8" TRAIL

8" TRAIL

8" TRAIL

8" TRAIL

8" TRAIL

8" TRAIL

8" TRAIL

8" TRAIL

8" TRAIL

8" TRAIL

8" TRAIL

8" TRAIL

8" TRAIL

8" TRAIL

8" TRAIL

8" TRAIL

8" TRAIL

8" TRAIL

8" TRAIL

8" TRAIL