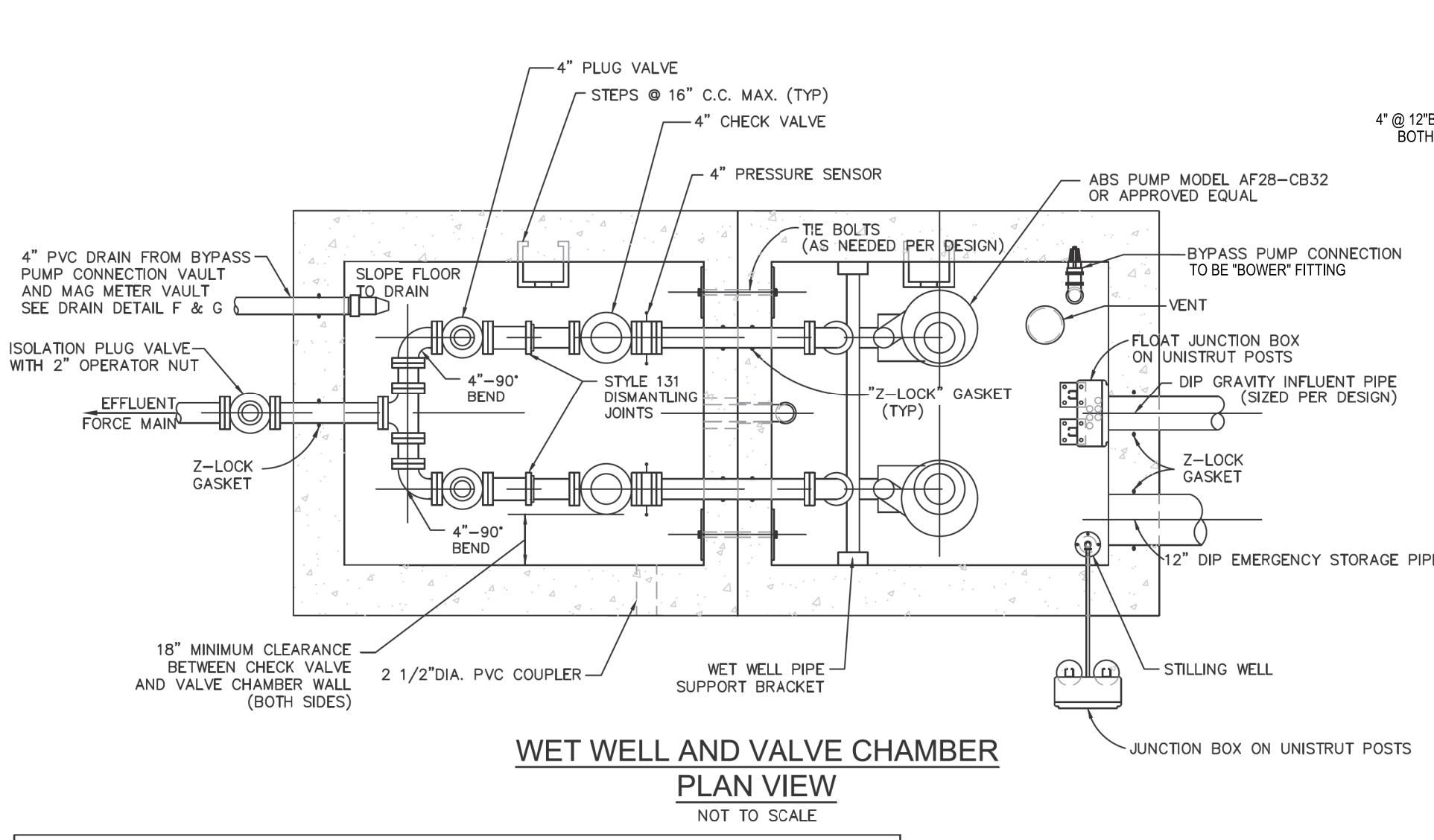
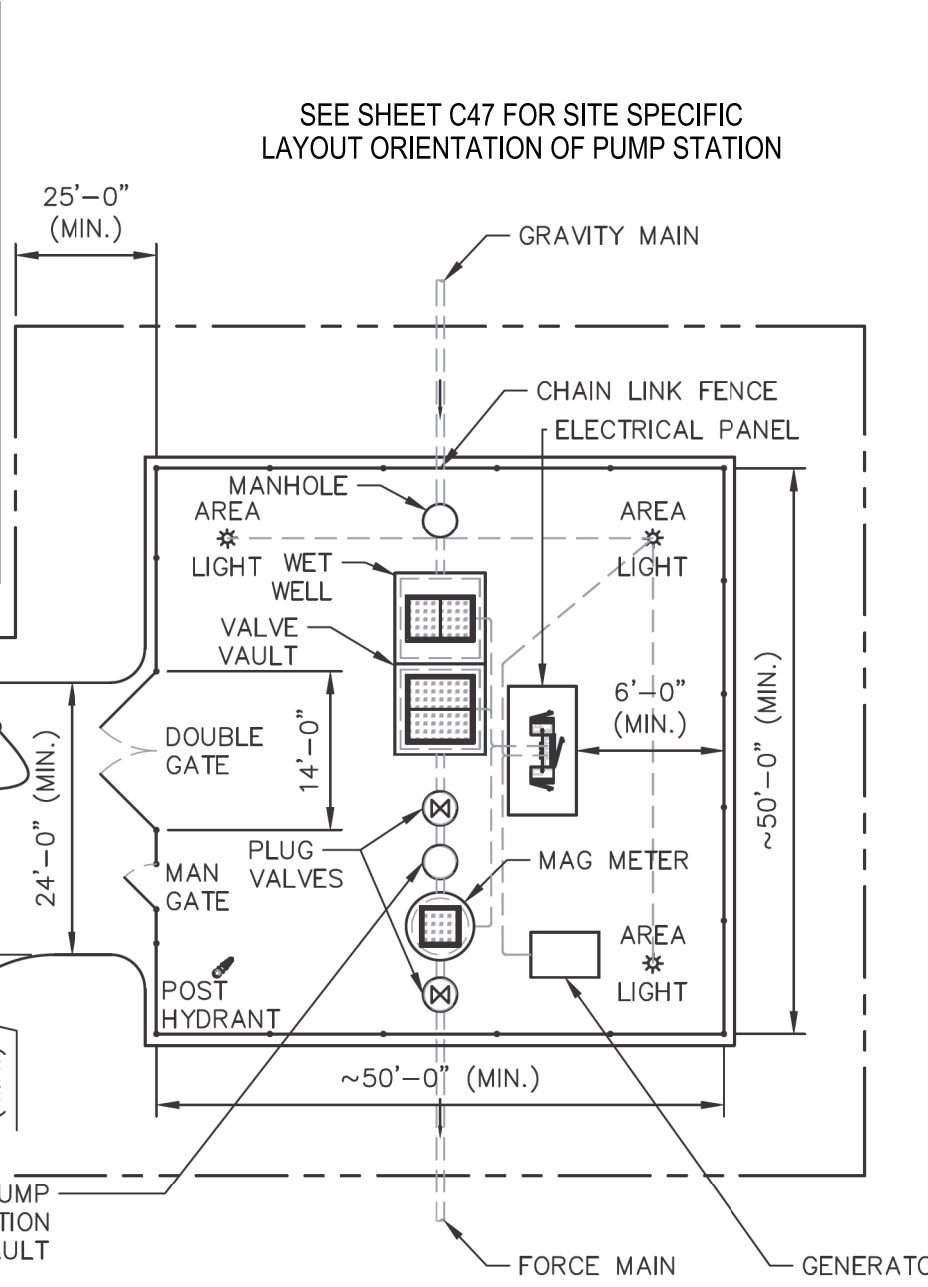
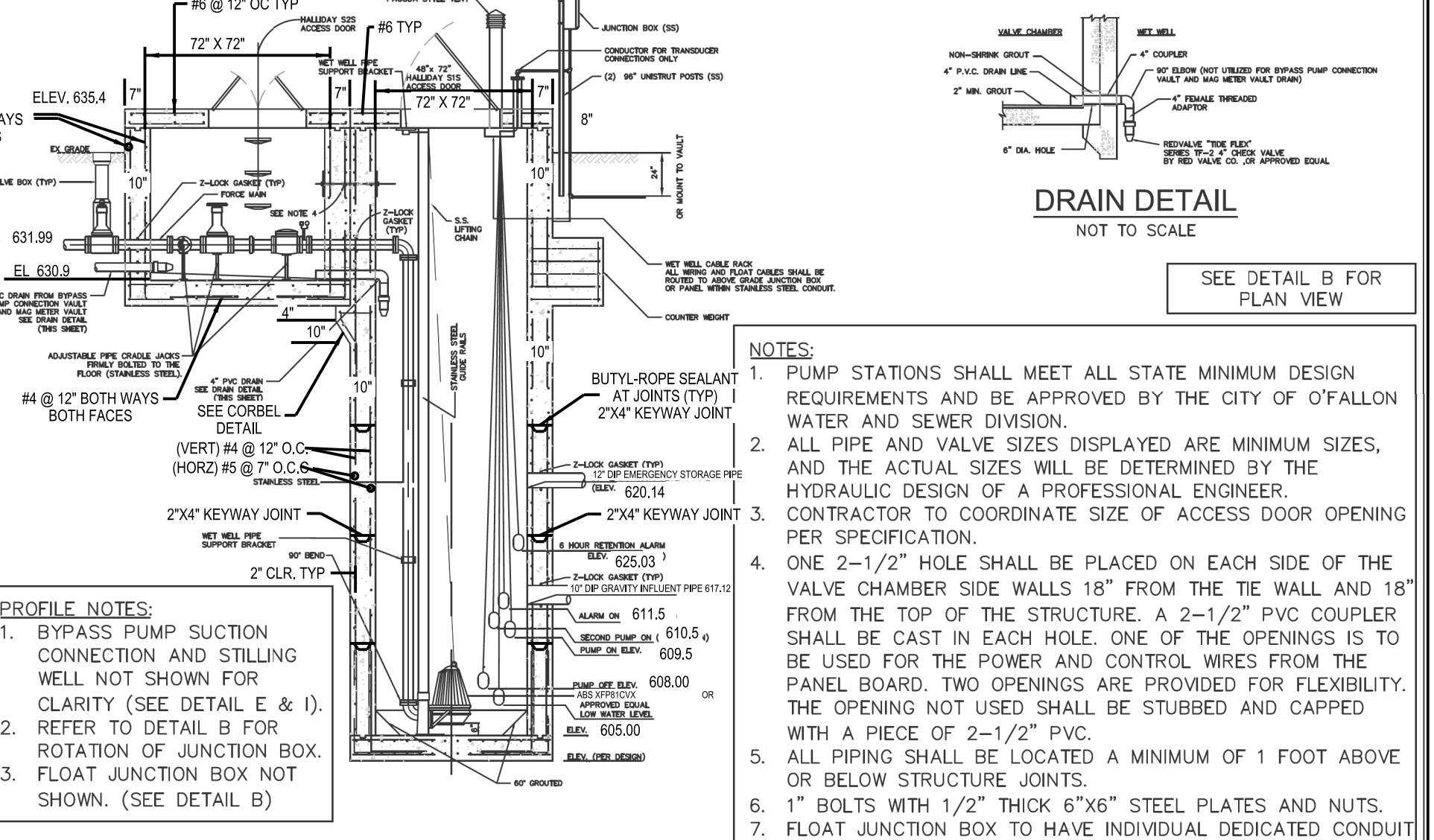


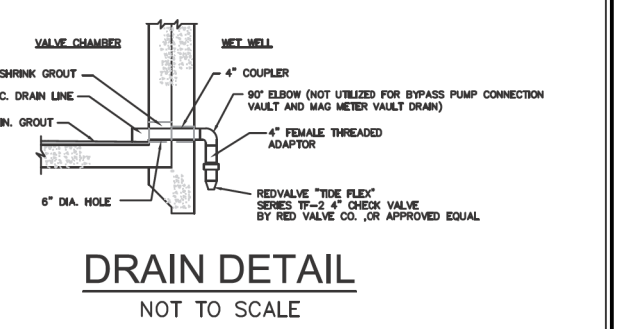
- NOTES:**
1. PUMP STATION PROPERTY OR EASEMENT SHALL BE 75' x 75' (ft.) MINIMUM.
 2. EQUIPMENT LOCATIONS AND DIMENSIONS MAY VARY.
 3. STAINLESS STEEL PIPING TO BE USED FROM PUMP TO THREE (3) FEET PAST BYPASS PUMP CONNECTION VAULT. PROPER TRANSITION TO BE USED.
 4. ALL EQUIPMENT SHALL BE LOCATED FIVE (5) FEET MINIMUM FROM FENCE.
 5. ENTRANCE ROAD AND SITE WITHIN FENCE SHALL BE 8 INCH THICK REINFORCED CONCRETE (FIBER MESH).
 6. THE PUMP STATION SITE LAYOUT AND DESIGN SHALL MEET ALL CITY OF O'FALLON SITE PLANNING AND DESIGN REQUIREMENTS. FOR REFERENCE ONLY. ROAD ENTRANCE ANGLES, ENTRANCE ROAD LOCATION, TURN AROUND, ETC. MAY DIFFER BASED ON ACTUAL SITE CONSTRAINTS.



- NOTES:**
1. PUMP STATIONS SHALL MEET ALL STATE MINIMUM DESIGN REQUIREMENTS AND BE APPROVED BY THE CITY OF O'FALLON WATER AND SEWER DIVISION.
 2. ALL EQUIPMENT, PIPING, AND VALVES TO BE MADE OF STAINLESS STEEL.



- PROFILE NOTES:**
1. BYPASS PUMP SECTION CONNECTION AND STILLING WELL NOT SHOWN FOR CLARITY (SEE DETAIL E & I).
 2. REFER TO DETAIL B FOR ROTATION OF JUNCTION BOX.
 3. FLOAT JUNCTION BOX NOT SHOWN. (SEE DETAIL B)



- NOTES:**
1. PUMP STATIONS SHALL MEET ALL STATE MINIMUM DESIGN REQUIREMENTS AND BE APPROVED BY THE CITY OF O'FALLON WATER AND SEWER DIVISION.
 2. ALL PIPE AND VALVE SIZES DISPLAYED ARE MINIMUM SIZES, AND THE ACTUAL SIZES WILL BE DETERMINED BY THE HYDRAULIC DESIGN OF A PROFESSIONAL ENGINEER.
 3. CONTRACTOR TO COORDINATE SIZE OF ACCESS DOOR OPENING PER SPECIFICATION.
 4. ONE 2-1/2" HOLE SHALL BE PLACED ON EACH SIDE OF THE VALVE CHAMBER SIDE WALLS 18" FROM THE TIE WALL AND 18" FROM THE TOP OF THE STRUCTURE. A 2-1/2" PVC COUPLER SHALL BE CAST IN EACH HOLE. ONE OF THE OPENINGS IS TO BE USED FOR THE POWER AND CONTROL WIRES FROM THE PANEL BOARD. TWO OPENINGS ARE PROVIDED FOR FLEXIBILITY. THE OPENING NOT USED SHALL BE STUBBED AND CAPPED WITH A PIECE OF 2-1/2" PVC.
 5. ALL PIPING SHALL BE LOCATED A MINIMUM OF 1 FOOT ABOVE OR BELOW STRUCTURE JOINTS.
 6. 1" BOLTS WITH 1/2" THICK 6"x6" STEEL PLATES AND NUTS.
 7. FLOAT JUNCTION BOX TO HAVE INDIVIDUAL DEDICATED CONDUIT FOR EACH FLOAT CABLE.
 8. ALL EQUIPMENT, PIPING, AND VALVES TO BE MADE OF STAINLESS STEEL.
 9. ALL ASPECTS OF STATION TO BE DESIGNED BY DEVELOPER REPRESENTATIVE.

gonzalez
CITY OF O'FALLON
100 NORTH MAIN
O'FALLON, MO. 63366

TYPICAL LIFT STATION DETAILS
TYPICAL SITE PLAN

PROJECT NO. 18-203-02
DATE 06/04/2020
SHEET 1 OF 1

gonzalez
CITY OF O'FALLON
100 NORTH MAIN
O'FALLON, MO. 63366

TYPICAL LIFT STATION DETAILS
TYPICAL WET WELL AND VALVE CHAMBER

PROJECT NO. 18-203-02
DATE 06/04/2020
SHEET 2 OF 1

gonzalez
CITY OF O'FALLON
100 NORTH MAIN
O'FALLON, MO. 63366

TYPICAL LIFT STATION DETAILS
TYPICAL WET WELL AND VALVE CHAMBER

PROJECT NO. 18-203-02
DATE 06/04/2020
SHEET 3 OF 1

gonzalez
CITY OF O'FALLON
100 NORTH MAIN
O'FALLON, MO. 63366

TYPICAL LIFT STATION DETAILS
TYPICAL WET WELL AND VALVE CHAMBER

PROJECT NO. 18-203-02
DATE 06/04/2020
SHEET 4 OF 1

gonzalez
CITY OF O'FALLON
100 NORTH MAIN
O'FALLON, MO. 63366

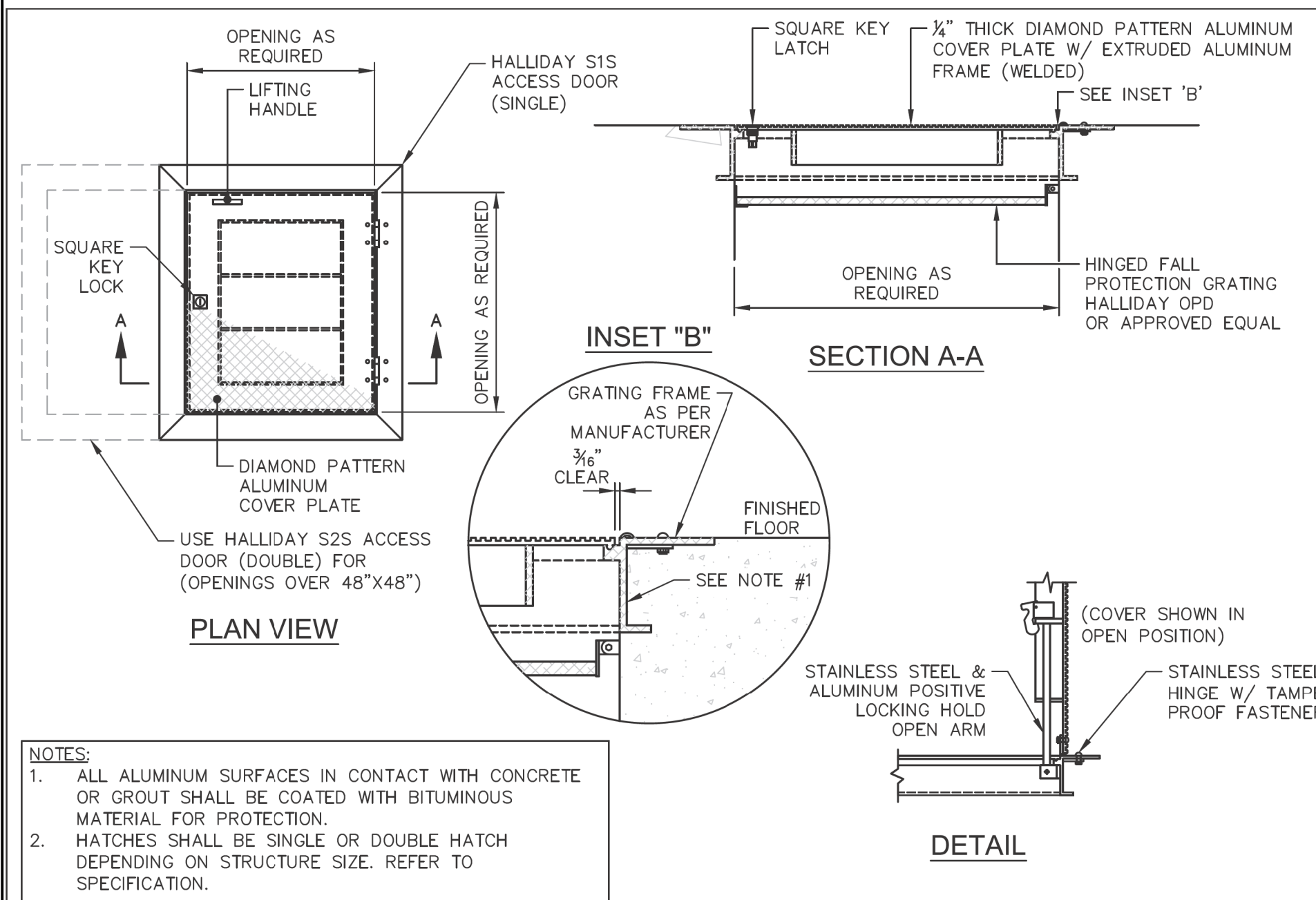
TYPICAL LIFT STATION DETAILS
TYPICAL BY-PASS PUMP CONNECTION

PROJECT NO. 18-203-02
DATE 06/04/2020
SHEET 5 OF 1

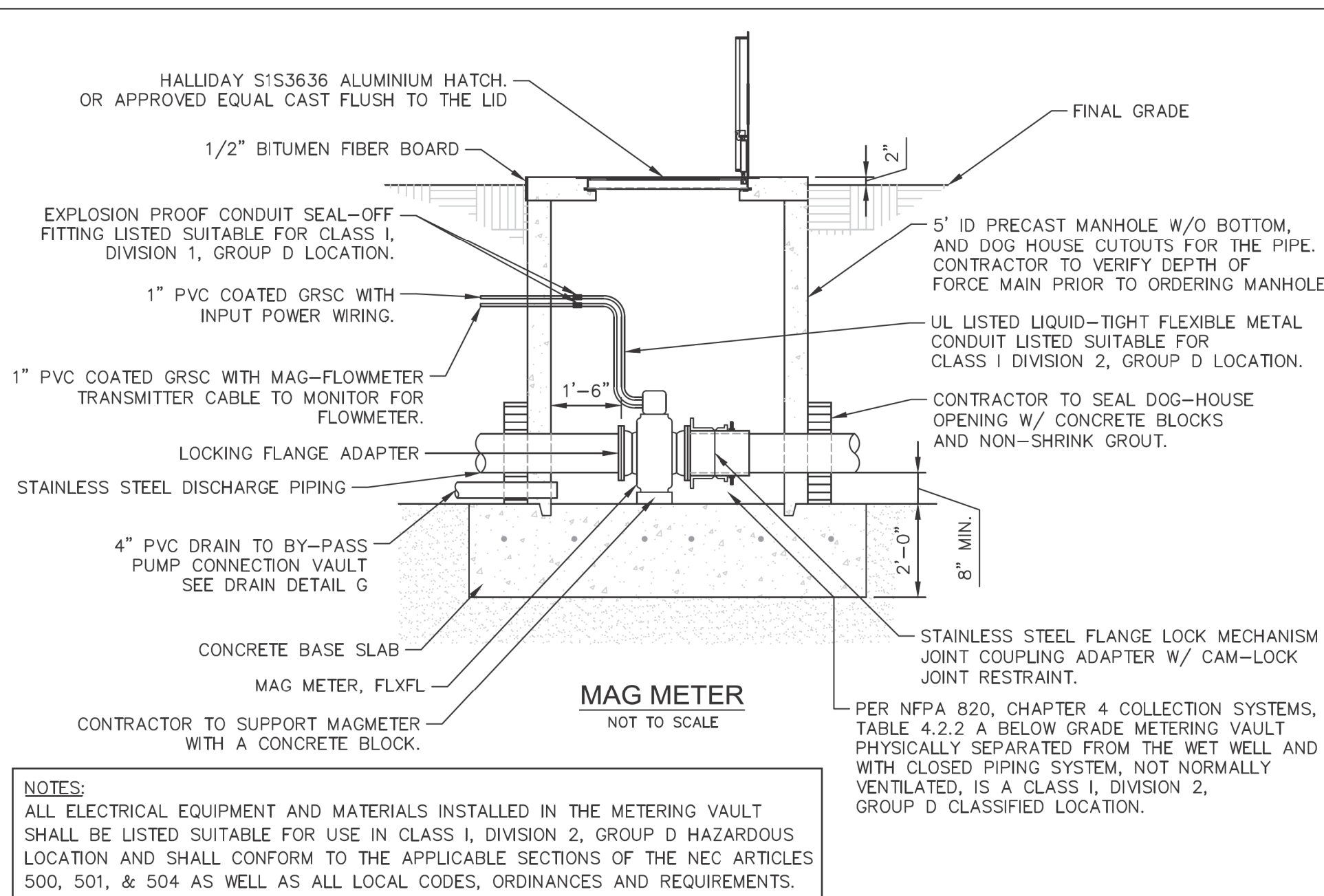
gonzalez
CITY OF O'FALLON
100 NORTH MAIN
O'FALLON, MO. 63366

TYPICAL LIFT STATION DETAILS
TYPICAL BY-PASS PUMP CONNECTION

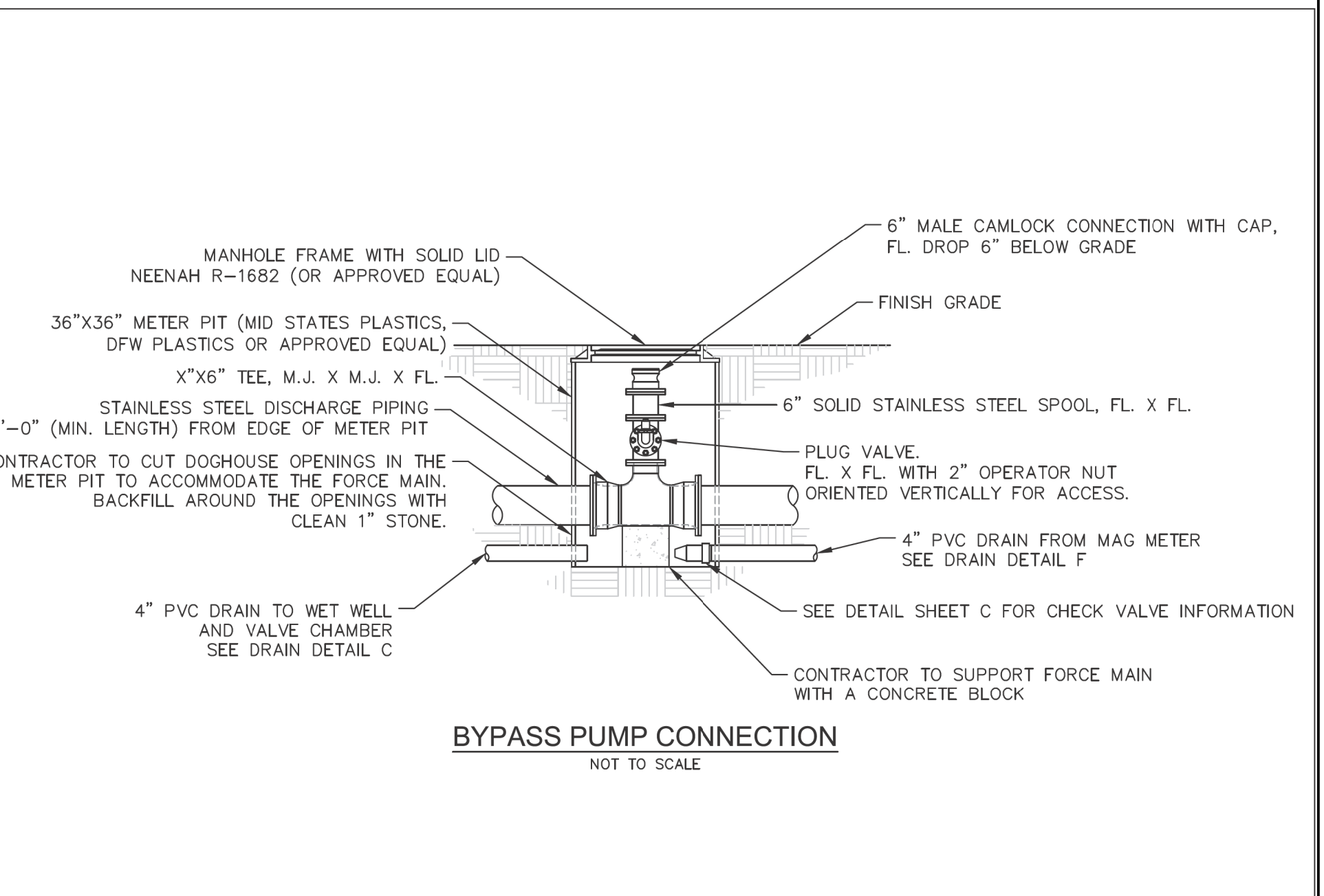
PROJECT NO. 18-203-02
DATE 06/04/2020
SHEET 6 OF 1



- NOTES:**
1. ALL ALUMINUM SURFACES IN CONTACT WITH CONCRETE OR GROUT SHALL BE COATED WITH BITUMINOUS MATERIAL FOR PROTECTION.
 2. HATCHES SHALL BE SINGLE OR DOUBLE HATCH DEPENDING ON STRUCTURE SIZE. REFER TO SPECIFICATION.



- NOTES:**
1. ALL ELECTRICAL EQUIPMENT AND MATERIALS INSTALLED IN THE METERING VAULT SHALL BE LISTED SUITABLE FOR USE IN CLASS I, DIVISION 2, GROUP D HAZARDOUS LOCATION AND SHALL CONFORM TO THE APPLICABLE SECTIONS OF THE NEC ARTICLES 500, 501, & 504 AS WELL AS ALL LOCAL CODES, ORDINANCES AND REQUIREMENTS.



- NOTES:**
1. CONTRACTOR TO CUT DOGHOUSE OPENINGS IN THE METER PIT TO ACCOMMODATE THE FORCE MAIN. BACKFILL AROUND THE OPENINGS WITH CLEAN 1" STONE.
 2. CONTRACTOR TO SUPPORT FORCE MAIN WITH A CONCRETE BLOCK.

gonzalez
CITY OF O'FALLON
100 NORTH MAIN
O'FALLON, MO. 63366

TYPICAL LIFT STATION DETAILS
TYPICAL ALUMINUM ACCESS HATCH

PROJECT NO. 18-203-02
DATE 06/04/2020
SHEET 1 OF 1

gonzalez
CITY OF O'FALLON
100 NORTH MAIN
O'FALLON, MO. 63366

TYPICAL LIFT STATION DETAILS
TYPICAL ALUMINUM ACCESS HATCH

PROJECT NO. 18-203-02
DATE 06/04/2020
SHEET 2 OF 1

gonzalez
CITY OF O'FALLON
100 NORTH MAIN
O'FALLON, MO. 63366

TYPICAL LIFT STATION DETAILS
TYPICAL ALUMINUM ACCESS HATCH

PROJECT NO. 18-203-02
DATE 06/04/2020
SHEET 3 OF 1

gonzalez
CITY OF O'FALLON
100 NORTH MAIN
O'FALLON, MO. 63366

TYPICAL LIFT STATION DETAILS
TYPICAL ALUMINUM ACCESS HATCH

PROJECT NO. 18-203-02
DATE 06/04/2020
SHEET 4 OF 1

gonzalez
CITY OF O'FALLON
100 NORTH MAIN
O'FALLON, MO. 63366

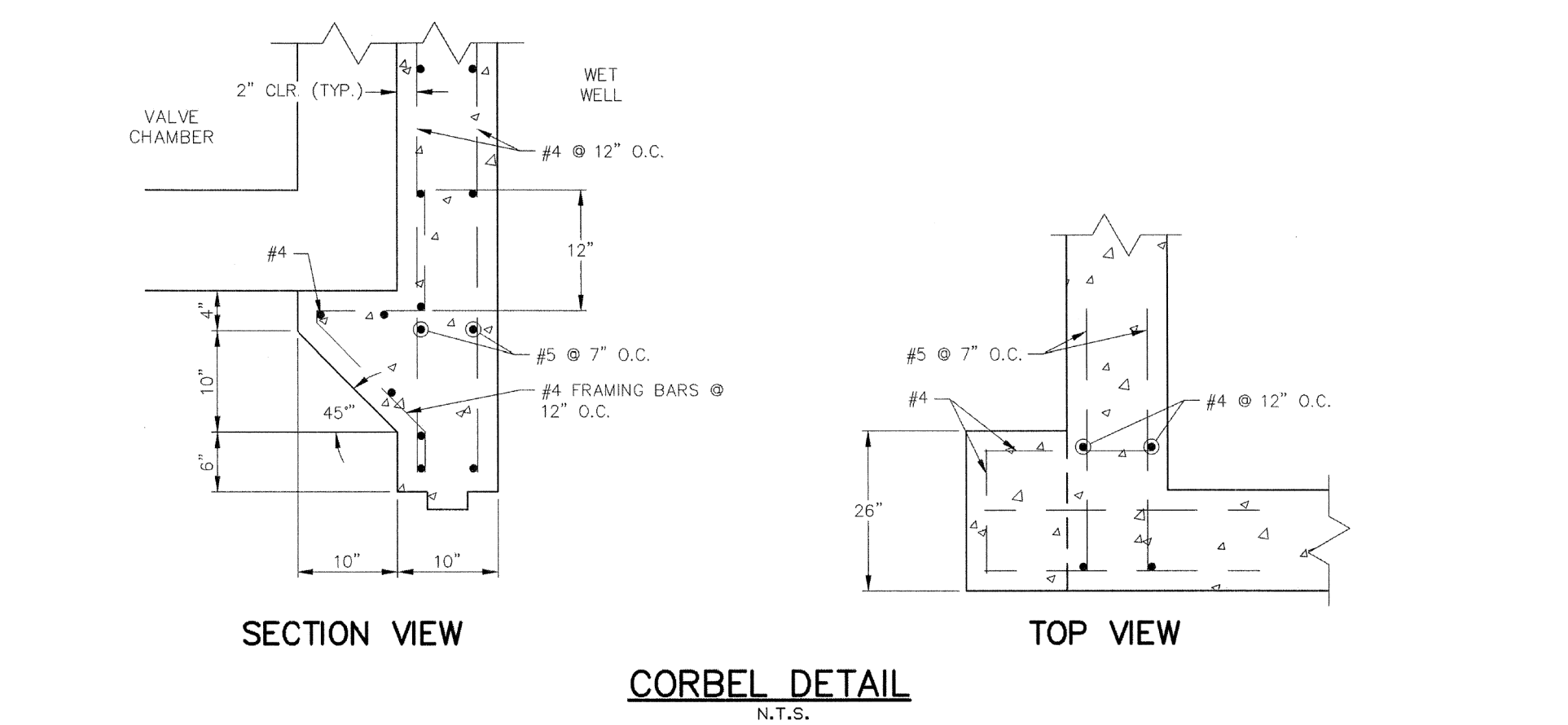
TYPICAL LIFT STATION DETAILS
TYPICAL BY-PASS PUMP CONNECTION

PROJECT NO. 18-203-02
DATE 06/04/2020
SHEET 5 OF 1

gonzalez
CITY OF O'FALLON
100 NORTH MAIN
O'FALLON, MO. 63366

TYPICAL LIFT STATION DETAILS
TYPICAL BY-PASS PUMP CONNECTION

PROJECT NO. 18-203-02
DATE 06/04/2020
SHEET 6 OF 1



- SECTION VIEW**
- CORBEL DETAIL**
N.T.S.

gonzalez
CITY OF O'FALLON
100 NORTH MAIN
O'FALLON, MO. 63366

TYPICAL LIFT STATION DETAILS
TYPICAL ALUMINUM ACCESS HATCH

PROJECT NO. 18-203-02
DATE 06/04/2020
SHEET 1 OF 1

gonzalez
CITY OF O'FALLON
100 NORTH MAIN
O'FALLON, MO. 63366

TYPICAL LIFT STATION DETAILS
TYPICAL ALUMINUM ACCESS HATCH

PROJECT NO. 18-203-02
DATE 06/04/2020
SHEET 2 OF 1

gonzalez
CITY OF O'FALLON
100 NORTH MAIN
O'FALLON, MO. 63366

TYPICAL LIFT STATION DETAILS
TYPICAL ALUMINUM ACCESS HATCH

PROJECT NO. 18-203-02
DATE 06/04/2020
SHEET 3 OF 1

gonzalez
CITY OF O'FALLON
100 NORTH MAIN
O'FALLON, MO. 63366

TYPICAL LIFT STATION DETAILS
TYPICAL ALUMINUM ACCESS HATCH

PROJECT NO. 18-203-02
DATE 06/04/2020
SHEET 4 OF 1

gonzalez
CITY OF O'FALLON
100 NORTH MAIN
O'FALLON, MO. 63366

TYPICAL LIFT STATION DETAILS
TYPICAL BY-PASS PUMP CONNECTION

PROJECT NO. 18-203-02
DATE 06/04/2020
SHEET 5 OF 1

gonzalez
CITY OF O'FALLON
100 NORTH MAIN
O'FALLON, MO. 63366

TYPICAL LIFT STATION DETAILS
TYPICAL BY-PASS PUMP CONNECTION

PROJECT NO. 18-203-02
DATE 06/04/2020
SHEET 6 OF 1