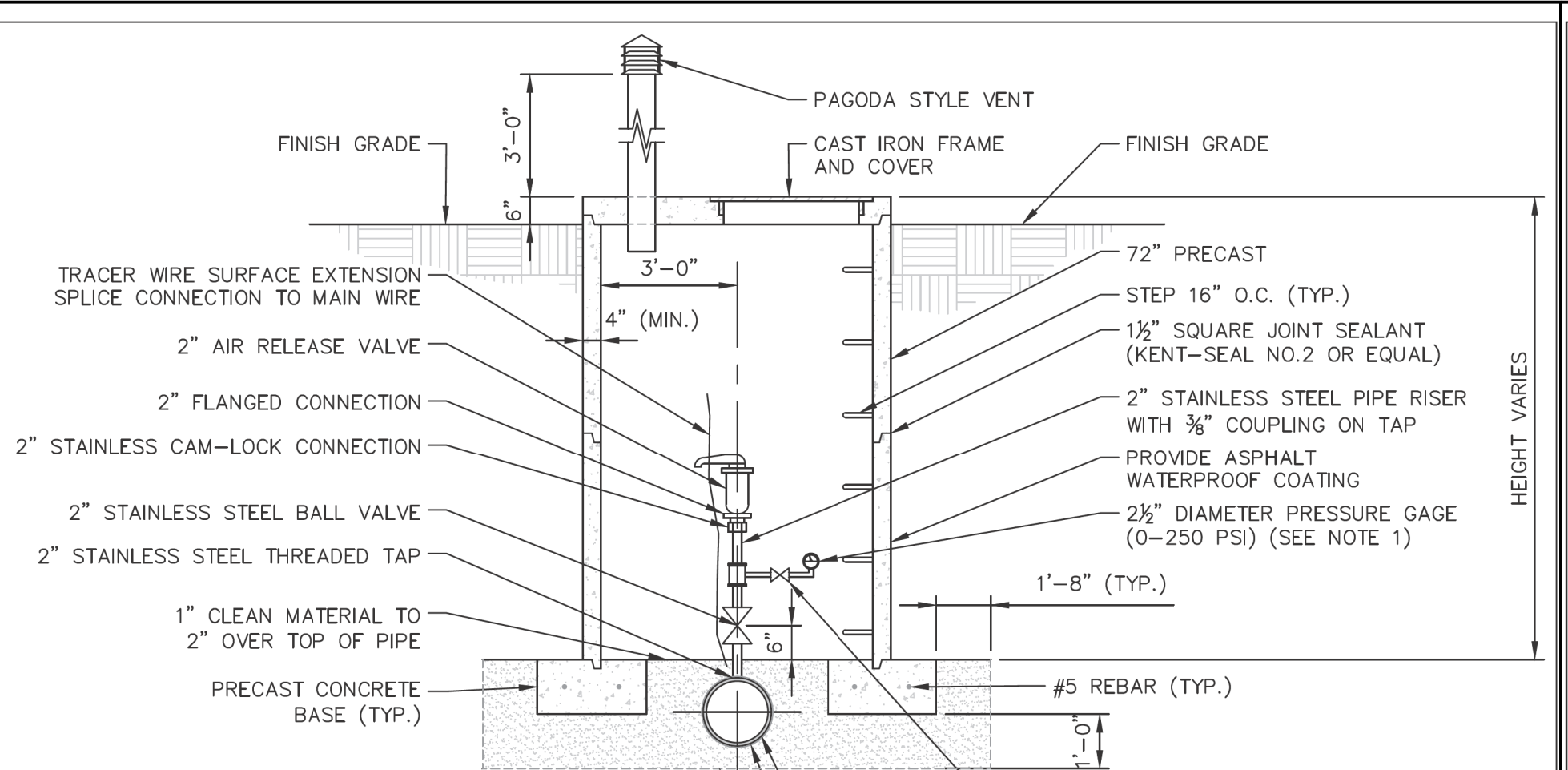


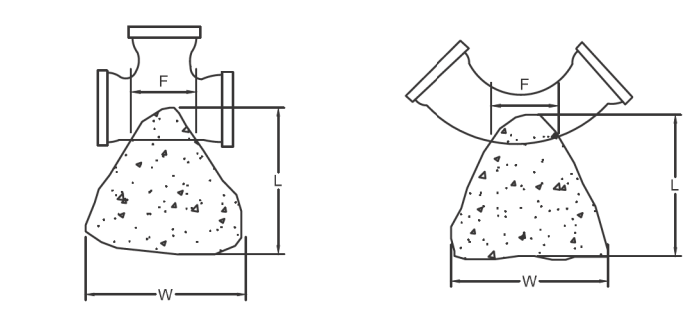
PLAN VIEW
NOT TO SCALE

SEE DETAIL M
FOR SECTION "A-A"



TYPICAL AIR RELEASE SECTION "A-A"
NOT TO SCALE

NOTES:
1. FACE OF PRESSURE GAGE SHALL BE VIEWABLE THROUGH THE AIR RELEASE VALVE VAULT HATCH WITHOUT ENTERING THE VAULT.
2. IN AREA OF AIR RELEASE VALVE, 1" CLEAN MATERIAL SHALL BE USED FOR PIPE BEDDING IN LIEU OF GRANULAR MATERIAL. MATERIAL TO BE WRAPPED IN GEO-FABRIC (MIRAFI 180N), MINIMUM OF 2' OUTSIDE OF STRUCTURE.



L = LENGTH OF THRUST BLOCK
W = WIDTH OF THRUST BLOCK
H = HEIGHT OF THRUST BLOCK
F = WIDTH OF THRUST BLOCK

Pipe Diameter	THRUST BLOCK DIMENSIONS (MEASUREMENTS IN INCHES)													
	ALL FITTINGS			TEES & TAPS			90 DEGREE		45 DEGREE		22.5 DEGREE		11.25 DEGREE	
	F	L	W	H	W	H	W	H	W	H	W	H	W	H
6	6	16	36	18	48	24	28	24	26	12	13	12		
8	8	20	45	24	54	36	45	24	30	18	24	12		
10	10	20	56	30	82	36	45	36	36	24	24	18		
12	12	24	68	36	100	42	64	36	40	30	24	24		

NOTES:
1. ALL THRUST BLOCKS ARE TO BE Poured AGAINST VIRGIN SOIL.
2. THRUST BLOCKS FOR FITTING EXCEEDING 12" SHALL BE DESIGNED BY A PROFESSIONAL ENGINEER REGISTERED IN THE STATE OF MISSOURI.

THRUST BLOCKING

TYPICAL LIFT STATION DETAILS
TYPICAL AIR RELEASE

CITY OF O'FALLON
100 NORTH MAIN
O'FALLON, MO. 63366

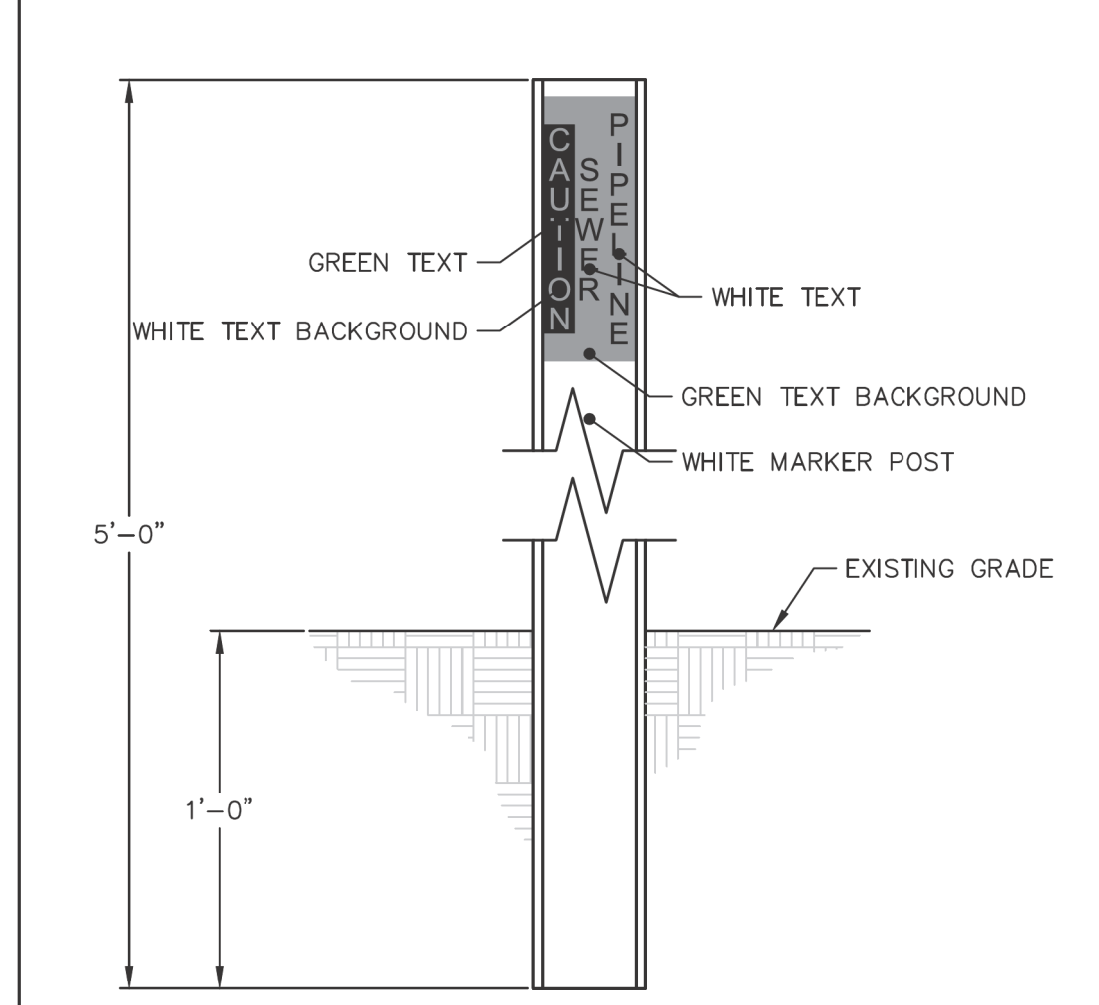
TYPICAL LIFT STATION DETAILS
TYPICAL AIR RELEASE

CITY OF O'FALLON
100 NORTH MAIN
O'FALLON, MO. 63366

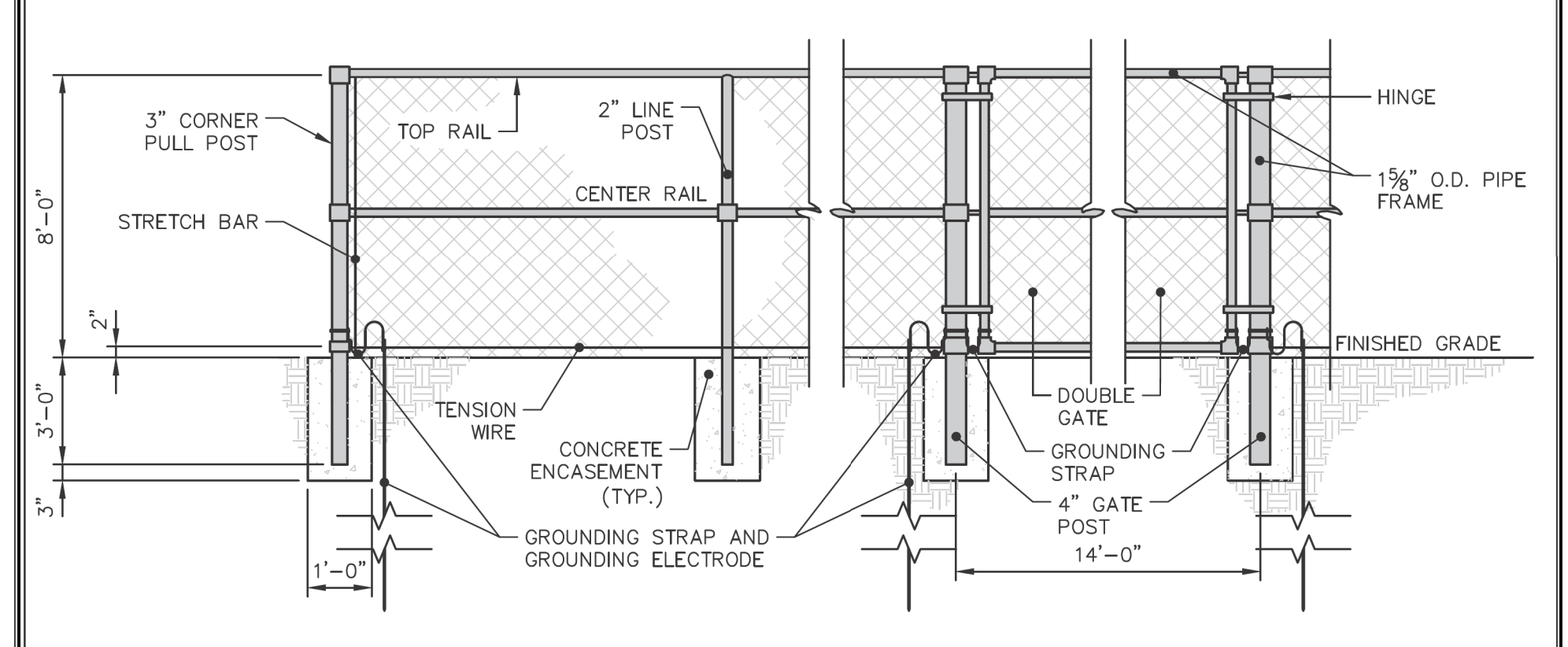
TYPICAL LIFT STATION DETAILS
THRUST BLOCK DETAILS

CITY OF O'FALLON
100 NORTH MAIN
O'FALLON, MO. 63366

NOTES:
1. FORCE MAIN MARKERS TO BE INSTALLED AT 500 FOOT INTERVALS, DIRECTLY ABOVE THE FORCE MAIN, ALONG THE ENTIRE LENGTH OF THE FORCE MAIN.
2. FORCE MAIN MARKERS TO BE PLACED AT THE BEGINNING AND END OF THE FORCE MAIN AS WELL AS ANY BENDS ALONG THE ENTIRE LENGTH OF THE FORCE MAIN.
3. IF THE MAIN IS SHORTER THAN 500 FEET PLACE A MARKER AT THE BEGINNING AND END OF THE FORCE MAIN.
4. USE CRM HIGH PERFORMANCE UTILITY MARKER CRM3-060-01 OR APPROVED EQUAL.



FORCE MAIN MARKER PROFILE VIEW
NOT TO SCALE



NOTES:
1. DOUBLE GATE SHALL HAVE A STRONG LOCK MECHANISM, DROP ROD, AND TRUSS ROD.
2. ALL FENCE COMPONENT MATERIALS SHALL BE EITHER HOT DIPPED GALVANIZED STEEL OR IRON. FENCE FABRIC SHALL BE ALUMINUM COATED WITH BLACK UV RESISTANT VINYL.
3. POSTS SHALL ALSO BE VINYL COATED WITH BLACK UV RESISTANT VINYL.
4. FENCES SHALL BE GROUNDED ON EACH SIDE OF THE GATES, AT EACH CORNER, AT THE CLOSEST APPROACH TO EACH BUILDING WITHIN 50 FEET OF THE FENCE.
5. GROUNDED LOCATIONS SHALL NOT EXCEED 150FT.
6. GROUNDED ELECTRODES SHALL BE 1 INCH BY 10 FEET LONG COPPER-CLAD STEEL ROD.
7. GROUND CONDUCTOR SHALL BE #8 (MIN.) SOLID COPPER WIRE.
8. GROUND CONDUCTOR SHALL BE CONNECTED TO THE FENCE WITH BRONZE GROUNDED CLAMP AND TO BE ELECTRODE WITH EXOTHERMIC WELD TO CREATE CONTINUITY BETWEEN FENCE POSTS, FENCE FABRIC, AND GROUND RODS.
9. TOTAL RESISTANCE OF FENCE TO GROUND SHALL NOT BE GREATER THAN 250HMS.

TYPICAL LIFT STATION DETAILS
TYPICAL FORCE MAIN MARKERS

CITY OF O'FALLON
100 NORTH MAIN
O'FALLON, MO. 63366

TYPICAL LIFT STATION DETAILS
TYPICAL CHAIN LINK FENCE & GATE

CITY OF O'FALLON
100 NORTH MAIN
O'FALLON, MO. 63366

TYPICAL LIFT STATION DETAILS
THRUST BLOCK DETAILS

CITY OF O'FALLON
100 NORTH MAIN
O'FALLON, MO. 63366

McKELVEY HOMES
Building A Tradition Of Excellence Since 1898
218 CHESTERFIELD TOWNE CENTRE
CHESTERFIELD, MISSOURI 63015
(636) 536-8900

VOIZ Incorporated
ENGINEERS
LAND PLANNING
LAND SURVEYING
TRANSPORTATION
CONSTRUCTION MANAGEMENT
10849 Indian Head Trl. Bldg.
St. Louis, Missouri 63132
314-426-0212 Main
314-426-2700 Fax
www.voizinc.com
Authority #203

THOMAS J. MEYER
Professional Engineer
MO E-24665

INVERNISS

PUMP STATION - DETAILS
1575 BRYAN RD.
Project # 22450

01/20/2022
C50