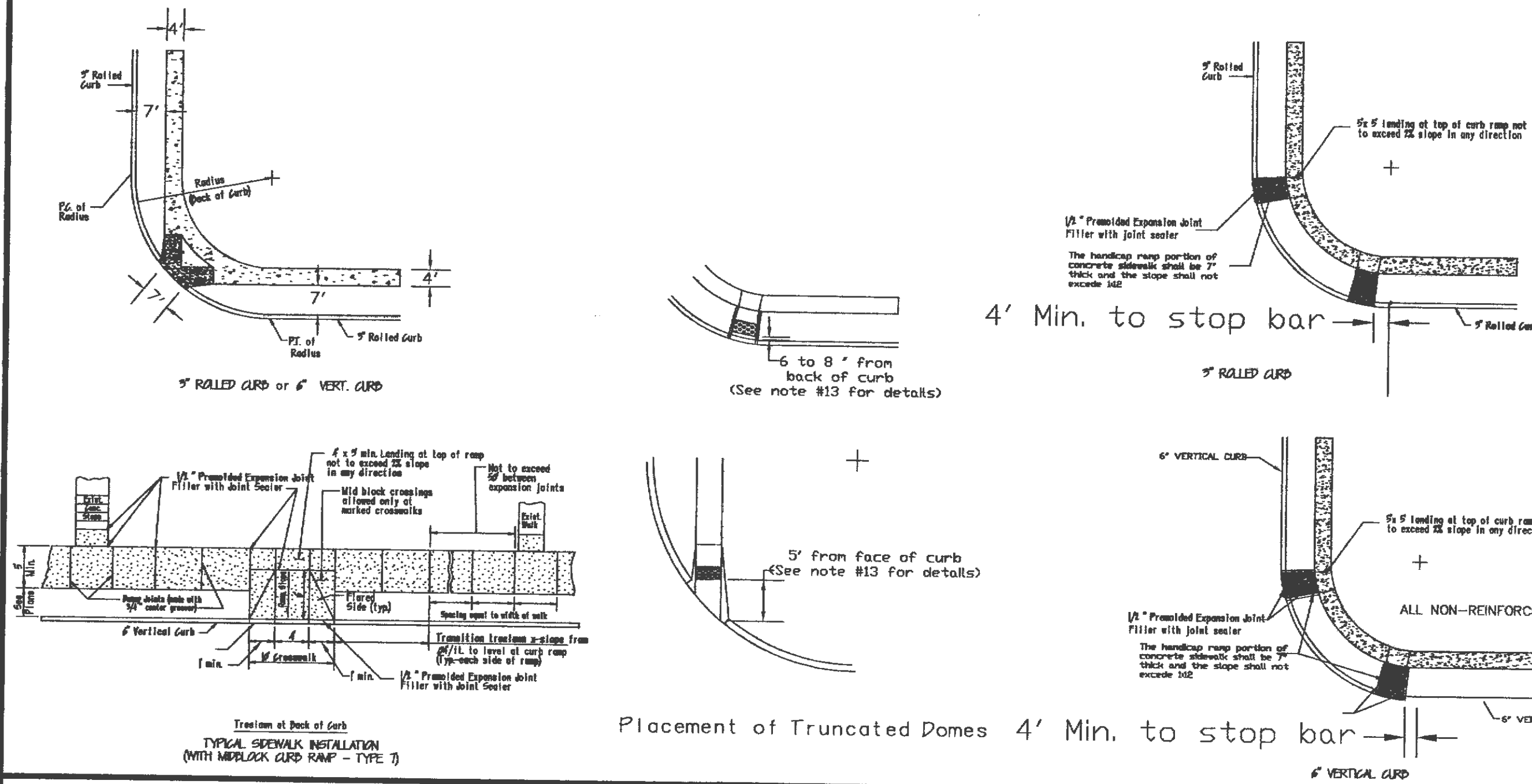
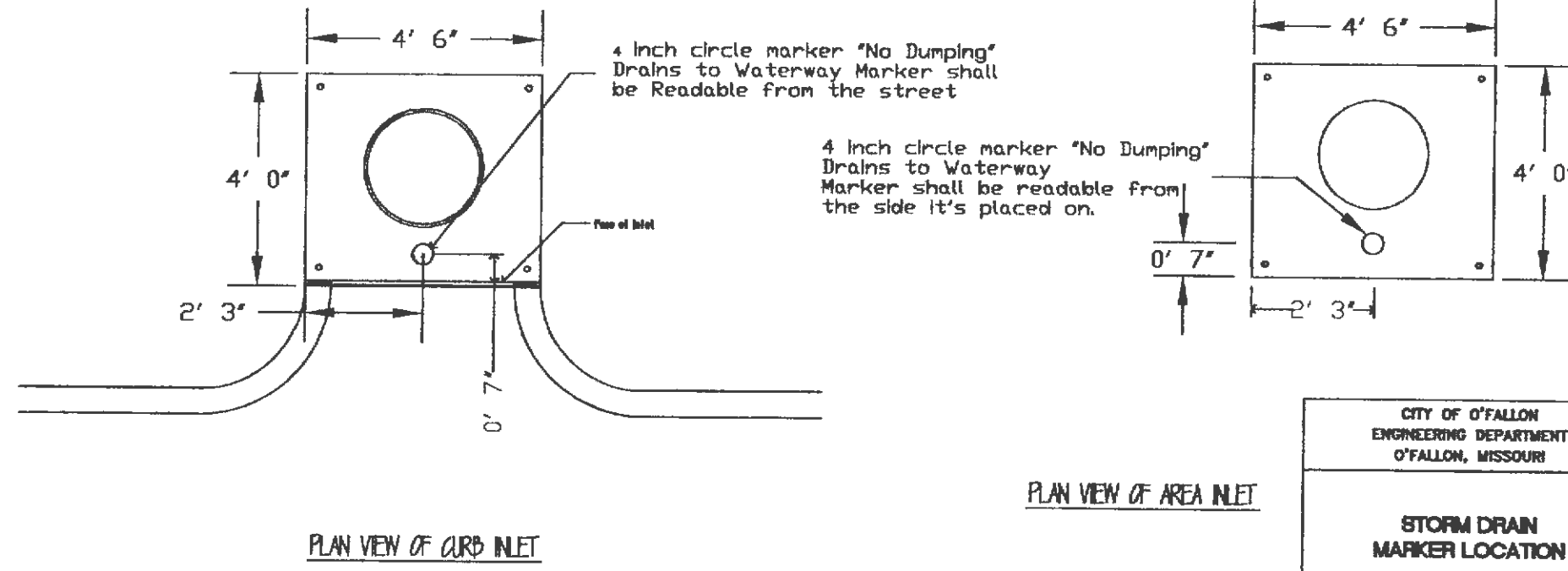


\* Provide a marking on the storm sewer inlets. The City will allow the following markers and adhesive procedures only as shown in the table or equal to the table below. There does exist certain 'peel and stick' adhesive pads, but these will not be allowed.

Manufacturer	Size	Style	Adhesive	Message (Part #)	Web site
ACP International	3 7/8"	Epoxy	Crystal Cap	No Dumping Drains to waterway (sd-w-cc)	www.acpinternational.com
DAS Manufacturing	4"	Epoxy	Standard Style	No Dumping Drains to stream (#sds)	www.dasmanufacturing.com



- GENERAL NOTES**
- Do not scale drawing. Follow dimensions.
  - Sidewalks and sidewalk curb ramps shall be constructed in accordance with these details and the current approved Americans with Disabilities Act Accessibility Guidelines (AWG).
  - Minimum sidewalk width along 6" vertical curb shall be 5 feet. Minimum sidewalk width along 9" rolled curb shall be 4 feet.
  - Minimum sidewalk cross slope 0.01/ft.
  - All sidewalk sections shall be 7" thick, except where indicated as 7" thick by shaded portions shown on details permitted.
  - Where curb ramps meet pavement, Delineator will not be permitted.
  - If integral concrete curb is constructed strike a dummy joint across bottom of ramp of curb line. If concrete curb is formed on black out pavement to provide full depth across ramp from outer point of curb taper to outer point of curb taper.
  - For pavement longitudinal and transverse joints and dowel and tie bar requirements and dimensions, refer to the Foreman Construction Details for Joints and Curbs.
  - For roadway grass signs pavement types, and thickness, refer to Standard Typical Sections.
  - The intersection of two sidewalks or the intersection of a sidewalk and a driveway may serve as a wheelchair passing space on sidewalks less than 5 feet wide.
  - All curb ramps shall have a detectable warning complying with ADA (Americans with Disabilities Act Accessibility Guidelines (AWG)).
  - All ramps must line up with the corresponding ramp on the other side of the street or to the truncated domes shall run parallel to the curb.
  - Vertical curb with truncated domes shall not be stamped and will be a ADA approved product.

PROJECT TITLE: J & A RETAIL

REVISION: 1

MUSLER ENGINEERING COMPANY

CIVIL ENGINEERING - PLANNING - LAND SURVEYING

32 Portwest Court, St. Charles, Missouri 63303

Telephone: (636) 916-0444

Fax: (636) 916-3444

CERTIFICATE OF AUTHORITY: ENGINEERING E-1234-D-0 LAND SURVEYING LS-284-D

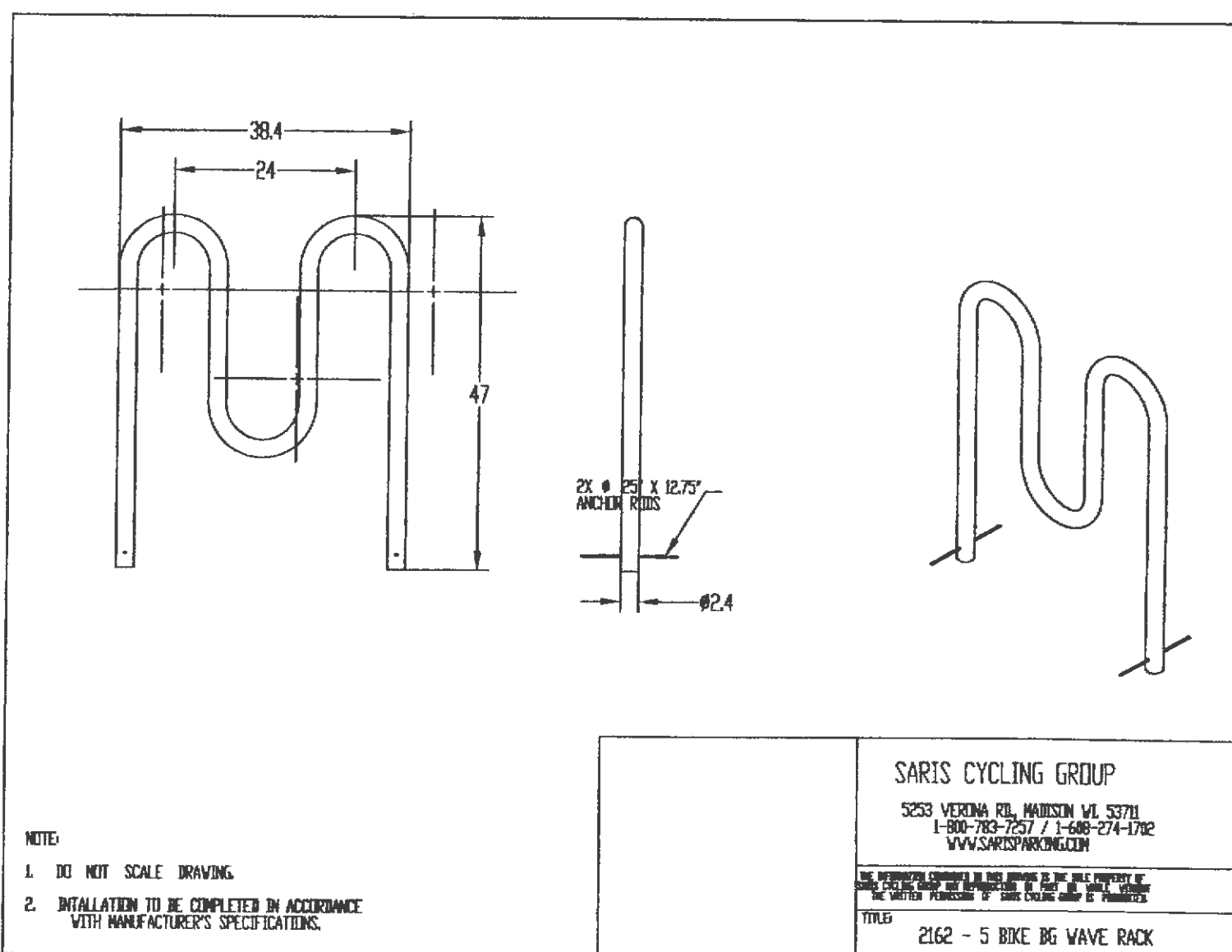
DATE: 08/14/14

DRAWN: J.R.S.

CHECKED: J.R.S.

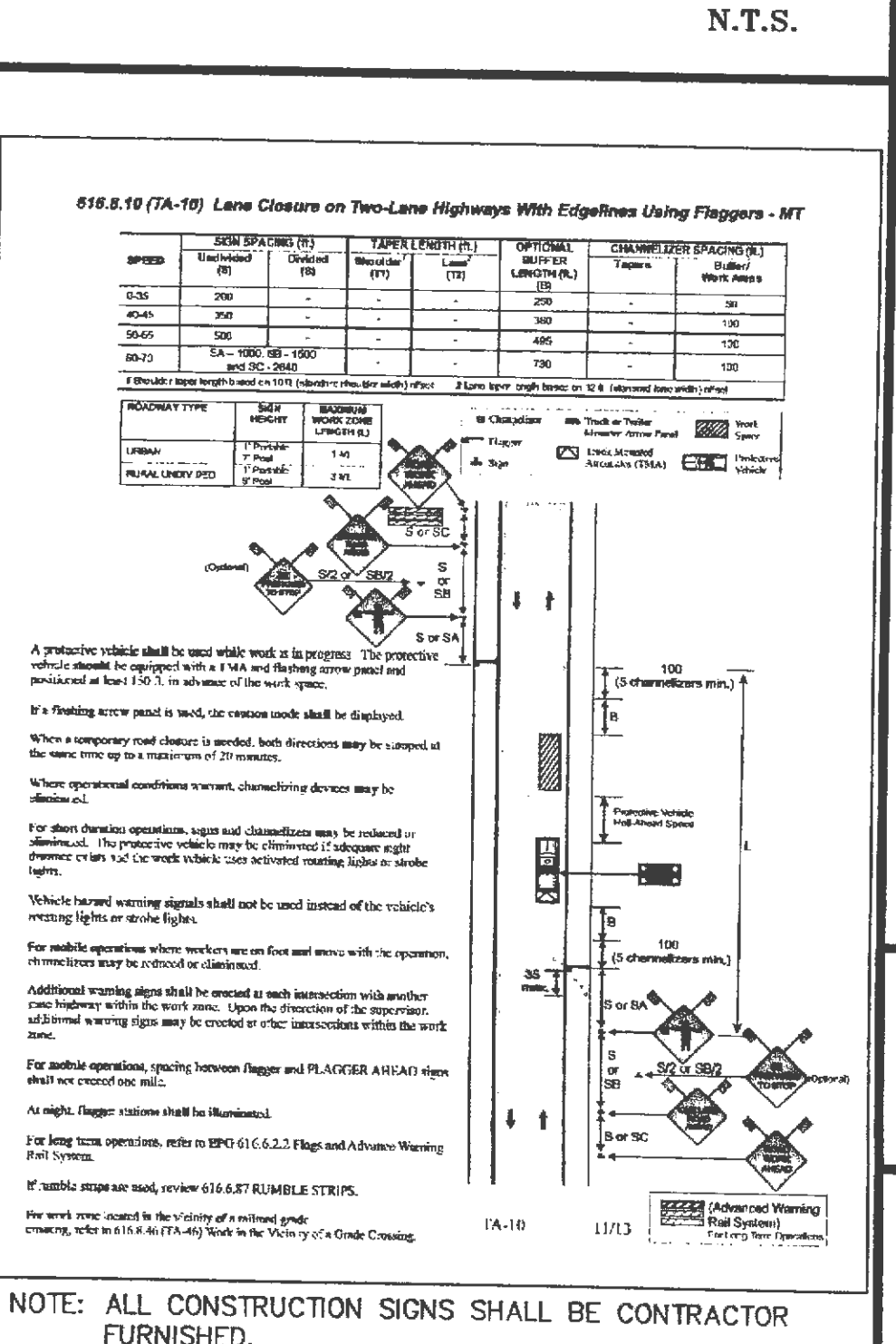
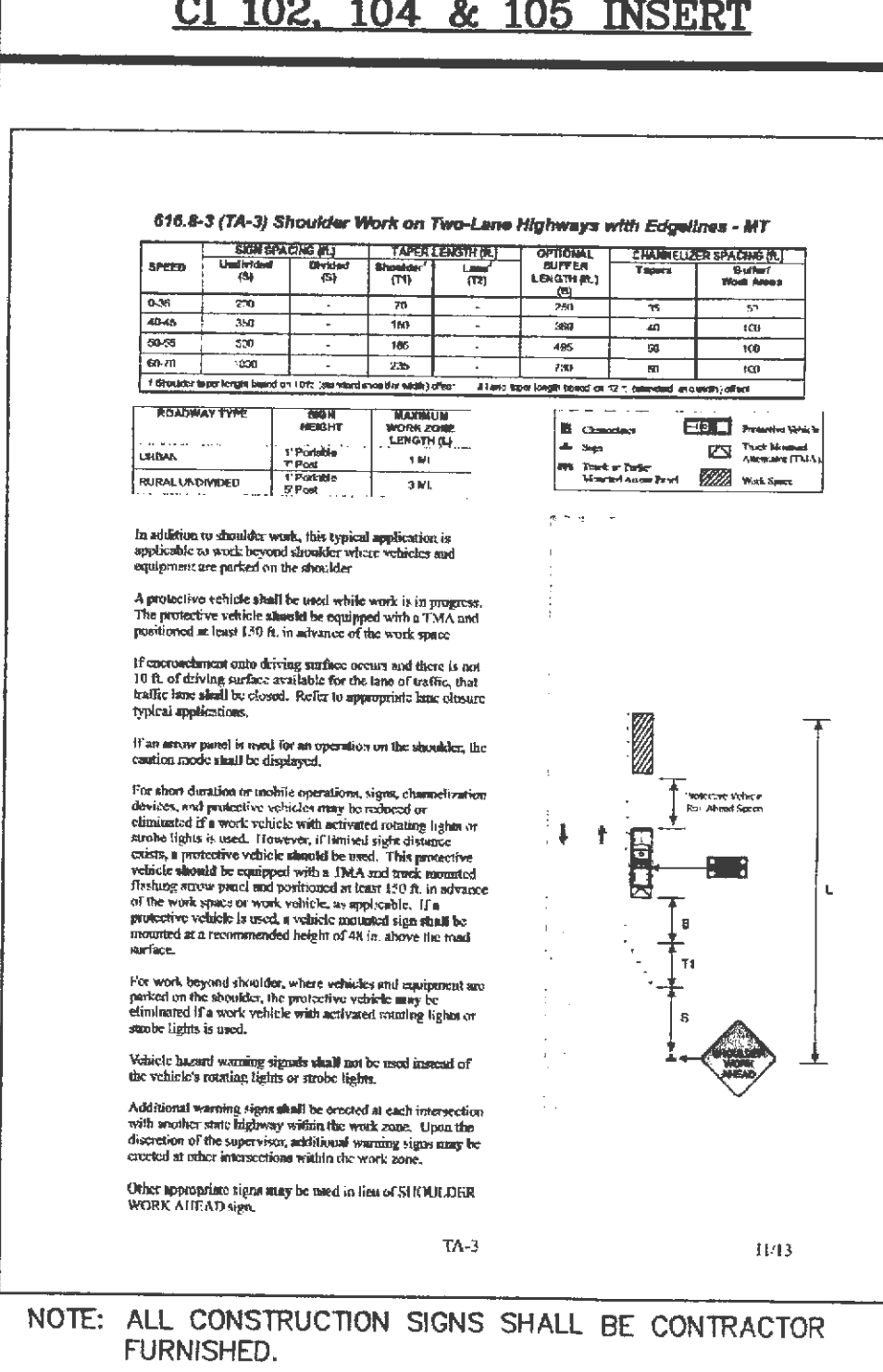
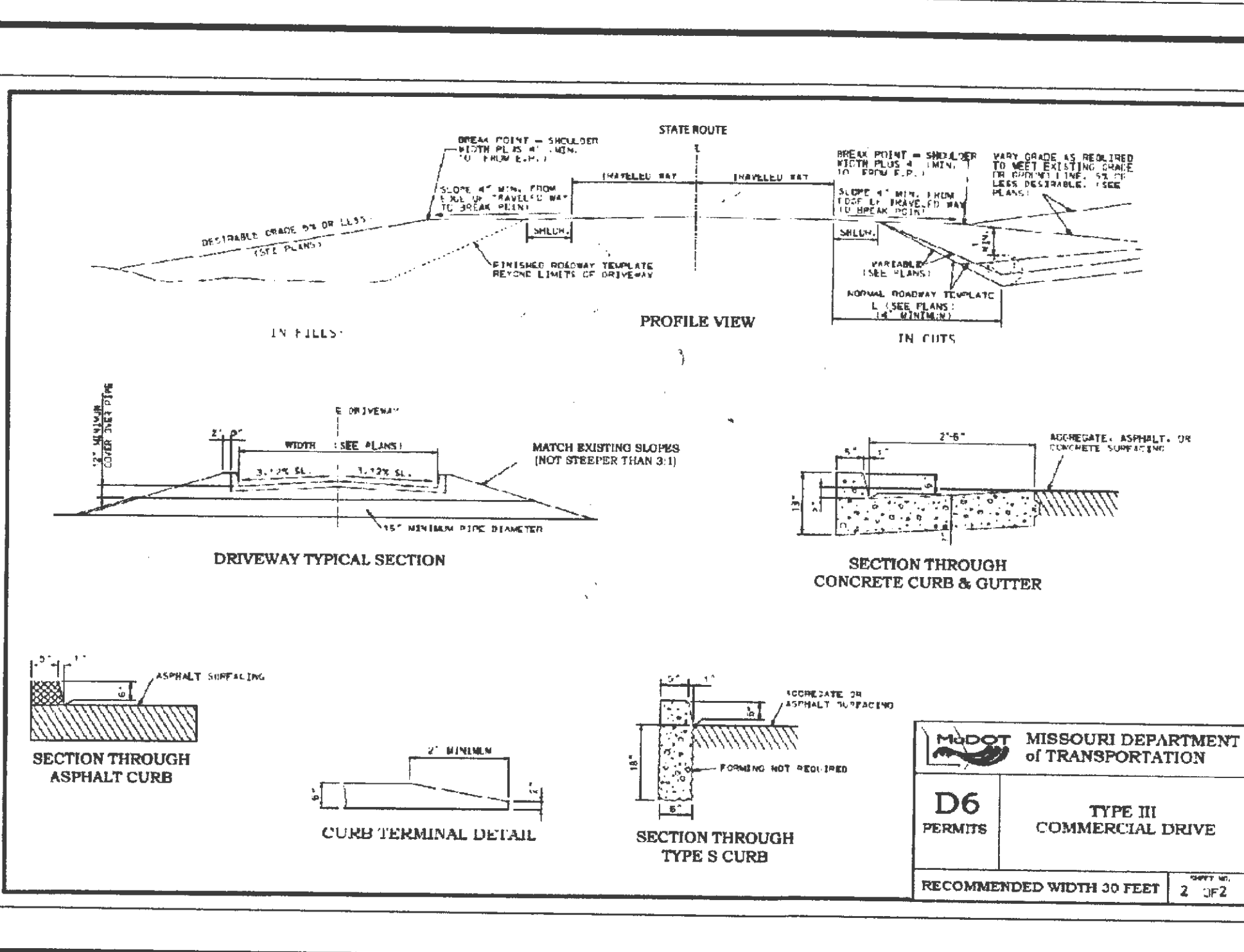
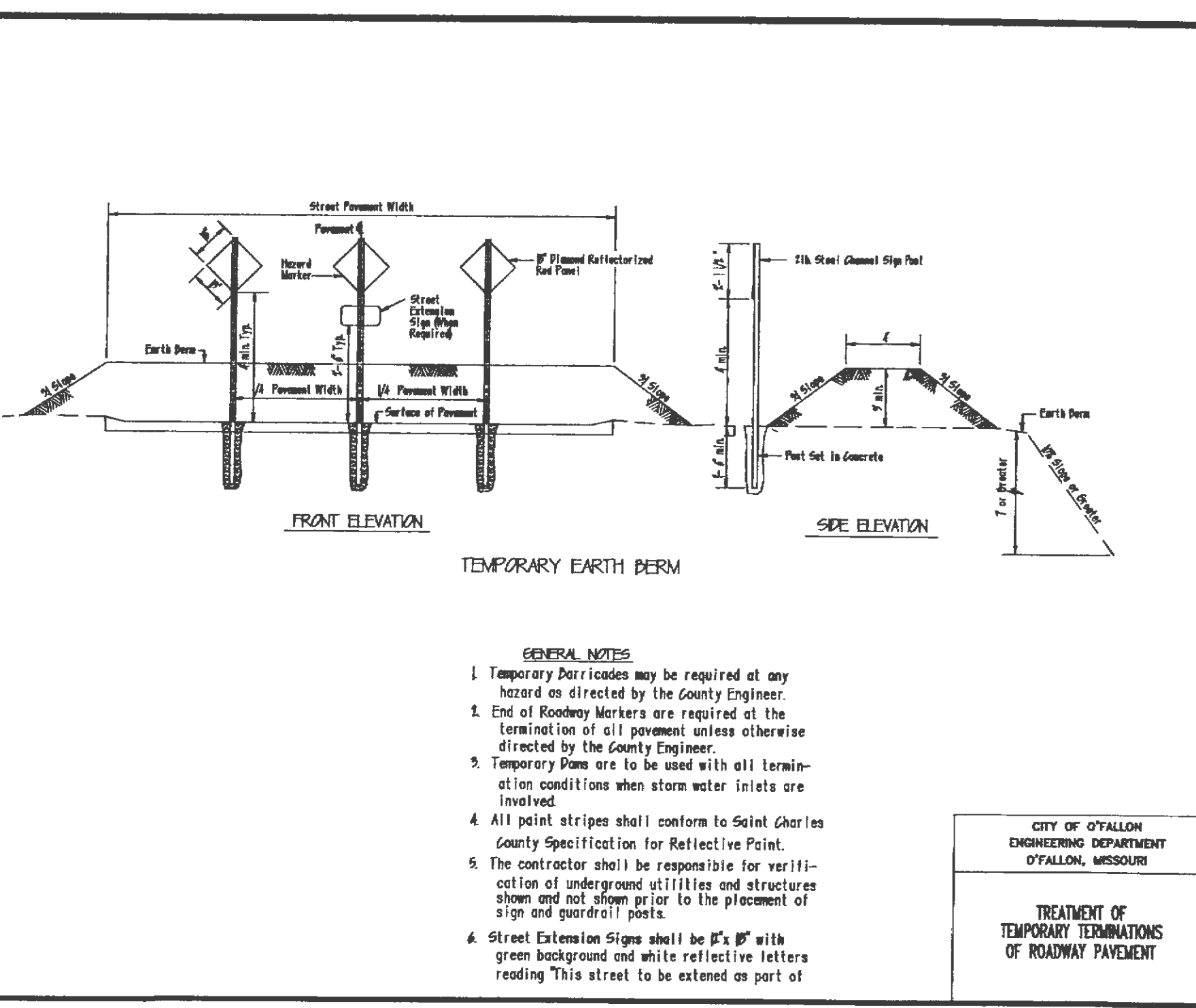
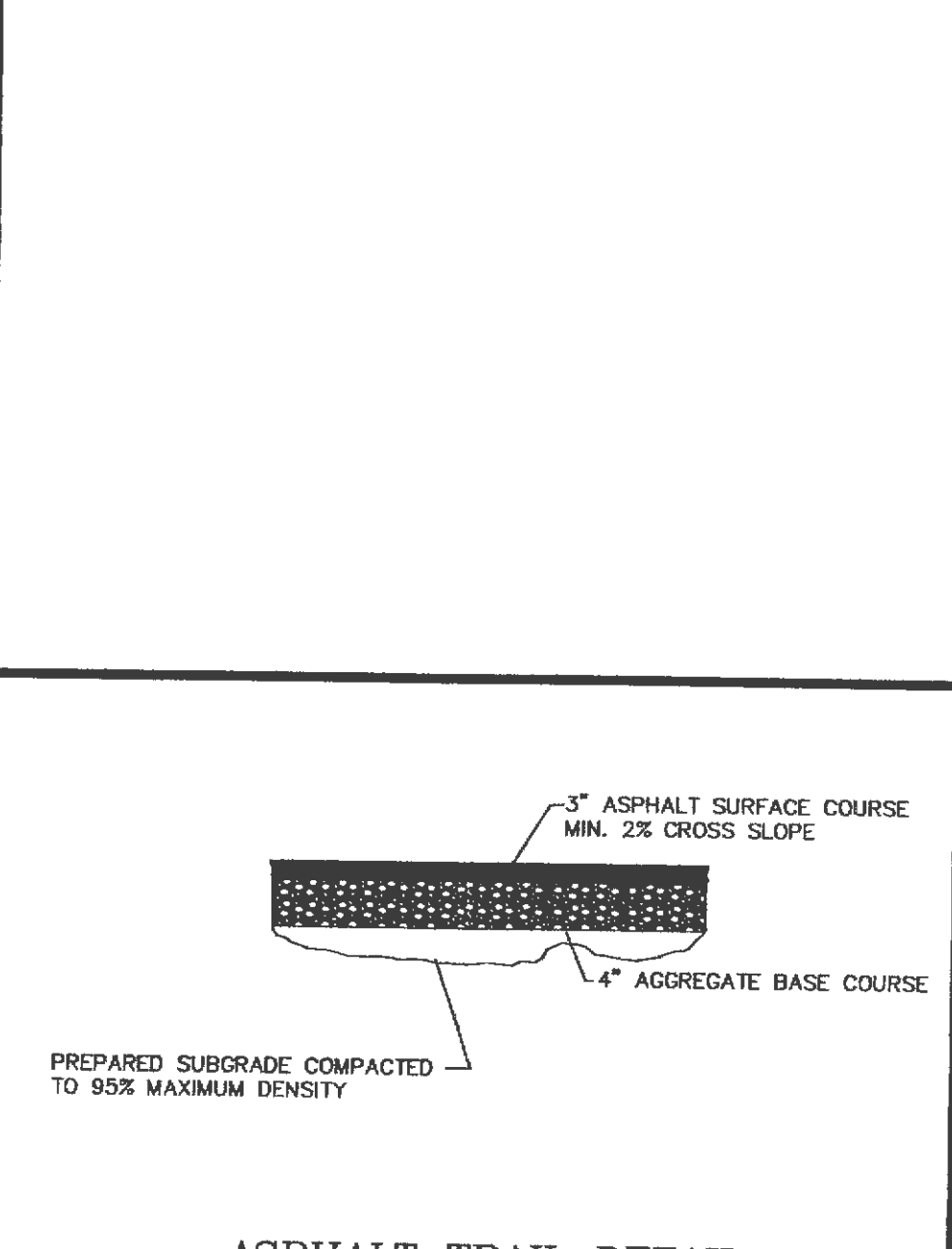
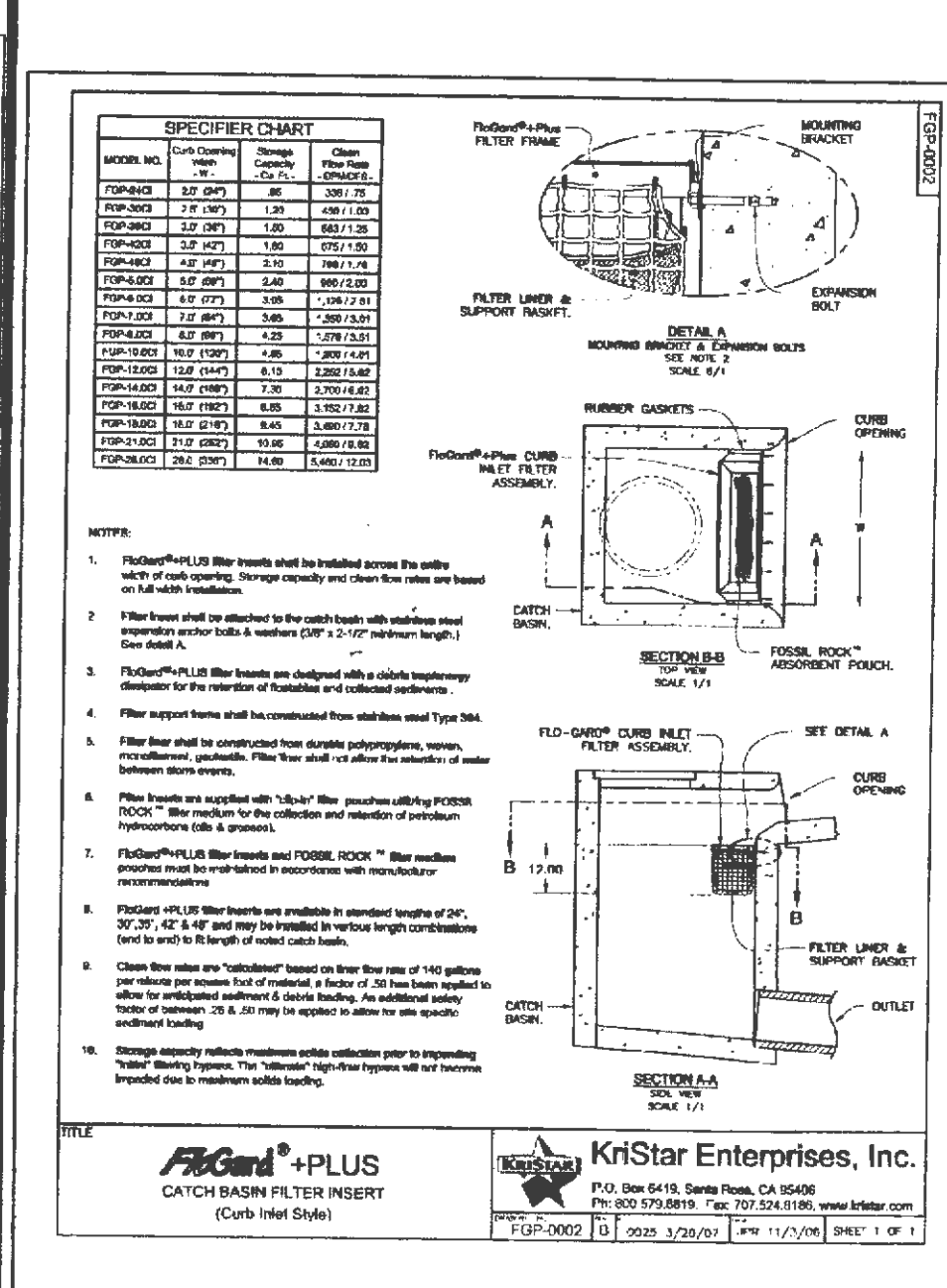
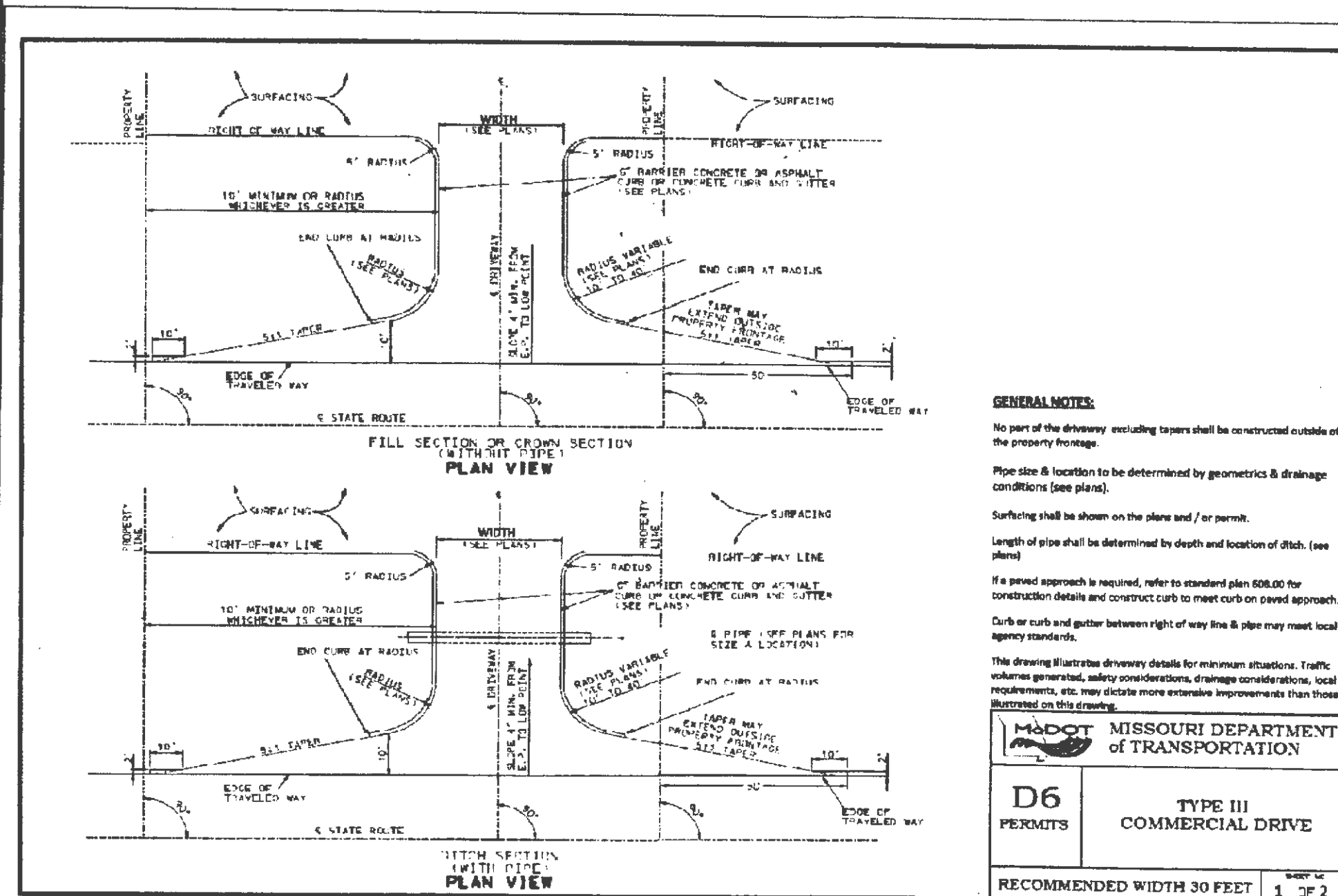
PROJECT NO.: 10 OF 12

SHEET NO.: 13-1367



BIKE RACK DETAIL

Not to Scale



PROJECT TITLE: J & A RETAIL

REVISION: 1

MUSLER ENGINEERING COMPANY

CIVIL ENGINEERING - PLANNING - LAND SURVEYING

32 Portwest Court, St. Charles, Missouri 63303

Telephone: (636) 916-0444

Fax: (636) 916-3444

CERTIFICATE OF AUTHORITY: ENGINEERING E-1234-D-0 LAND SURVEYING LS-284-D

DATE: 08/14/14

DRAWN: J.R.S.

CHECKED: J.R.S.

PROJECT NO.: 10 OF 12

SHEET NO.: 13-1367

DISCLAIMER OF RESPONSIBILITY

I hereby specify that the documents intended to be constructed by my and are limited to this sheet, and I hereby disclaim any responsibility for all other documents or instruments relating to or intended to be used for any part or parts of the architectural or engineering project or survey.

JEFFREY R. SMITH

PROFESSIONAL ENGINEER

9.17.14

9.18.14

JEFFREY R. SMITH, P.E.

MO. P.E. # E-2001004672

PREPARED FOR:

CONFUENCE DESIGN GROUP, LLC

MR. MIKE BAALMAN

110 RELLER DRIVE

OLD MONROE, MISSOURI 63309

TELEPHONE: 314-640-6212

FAX: 314-640-6212

E-mail: baalman@confuencedesigngroup.com

P & Z No. 5001.09.02

City No. 14-343

Page No. 10