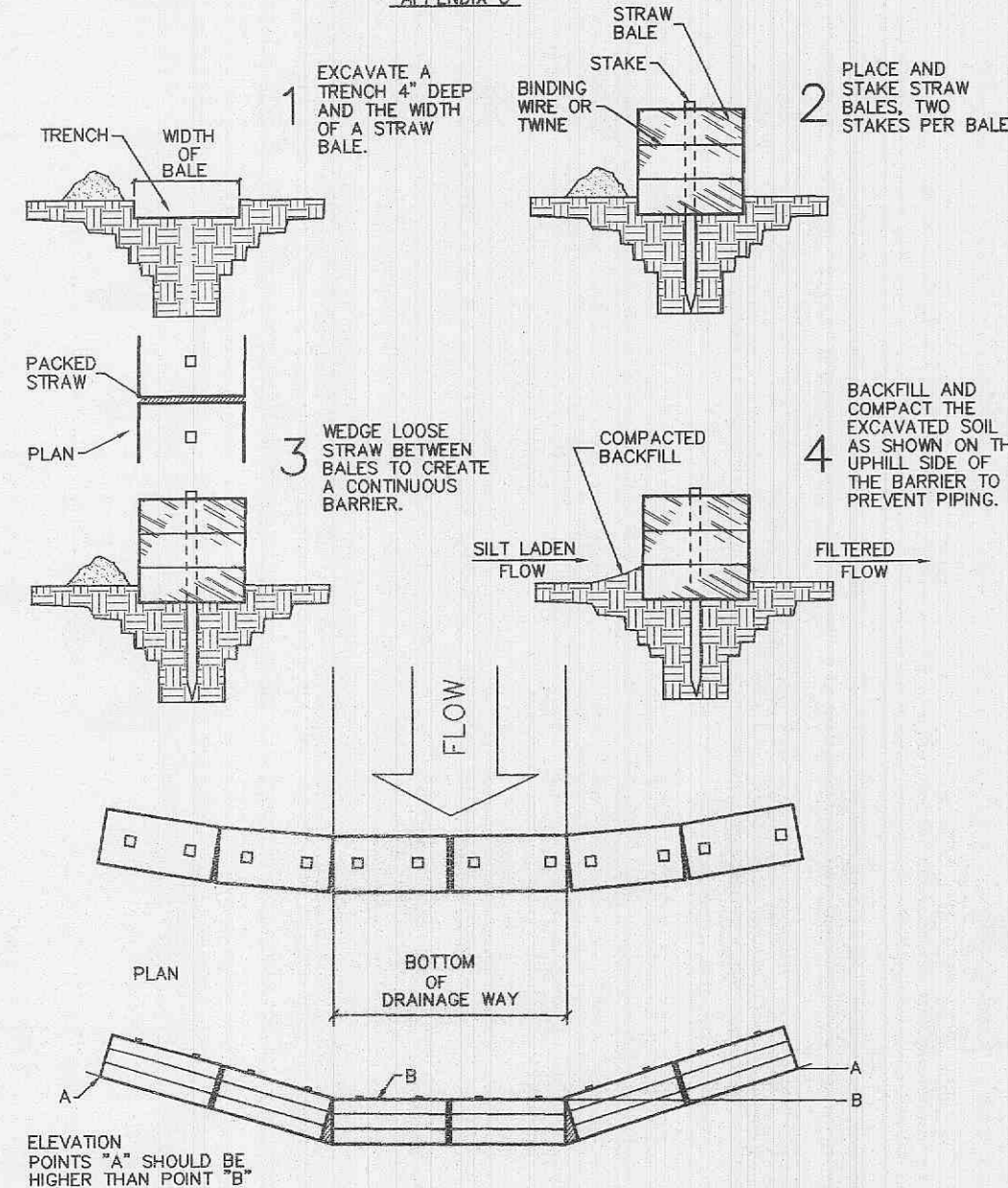
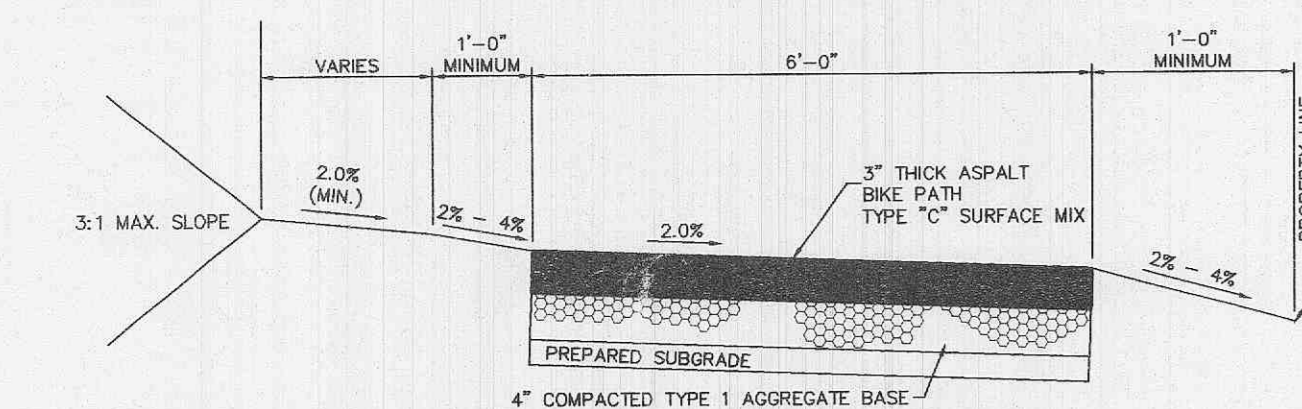


STRAW BALES BARRIERS
FOR URBAN DEVELOPMENT SITES
APPENDIX C.



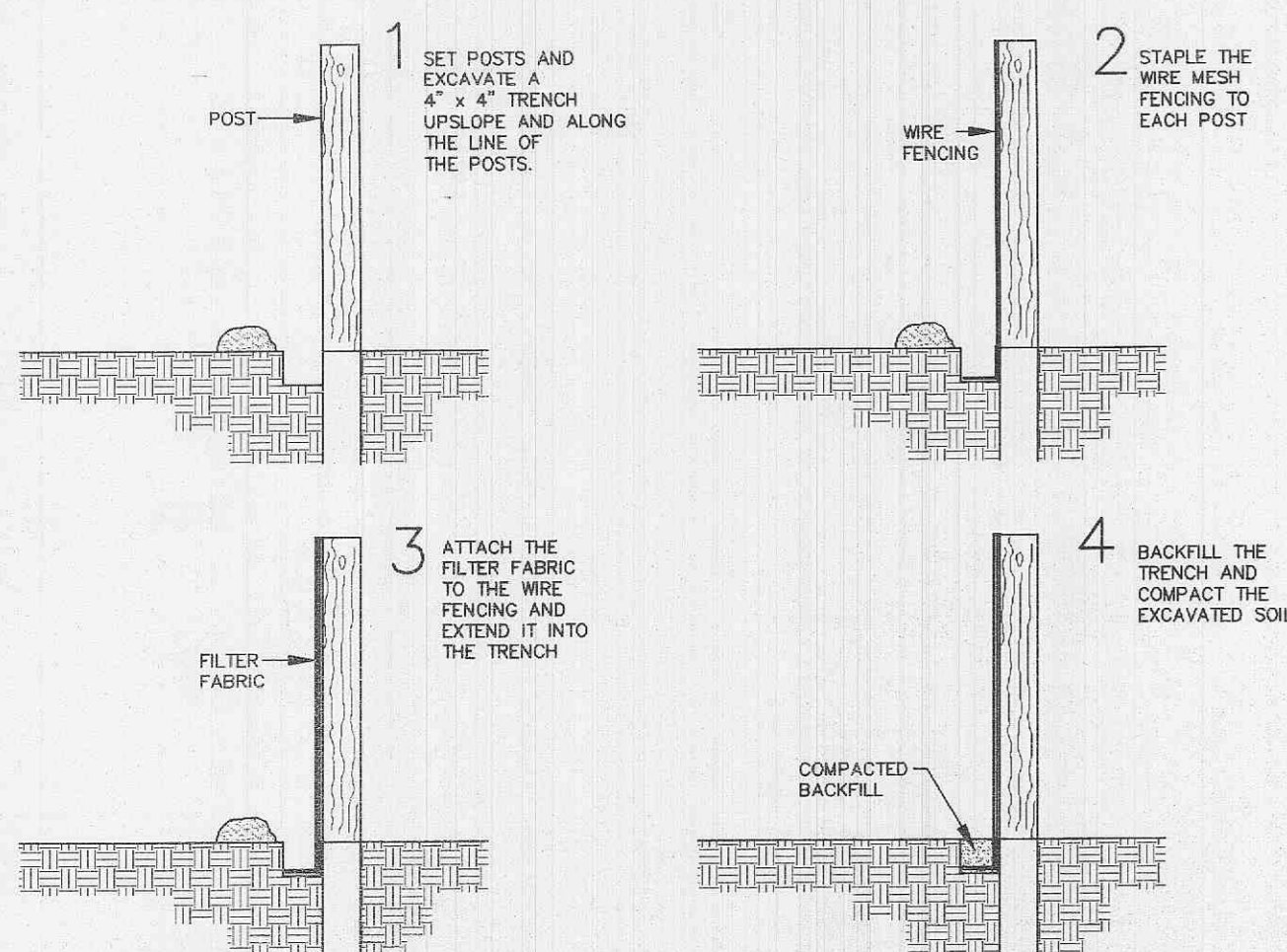
PLACEMENT AND CONSTRUCTION
OF STRAW BALE BARRIER



MULTI-USE TRAIL DETAIL
NOT TO SCALE

NOTES:

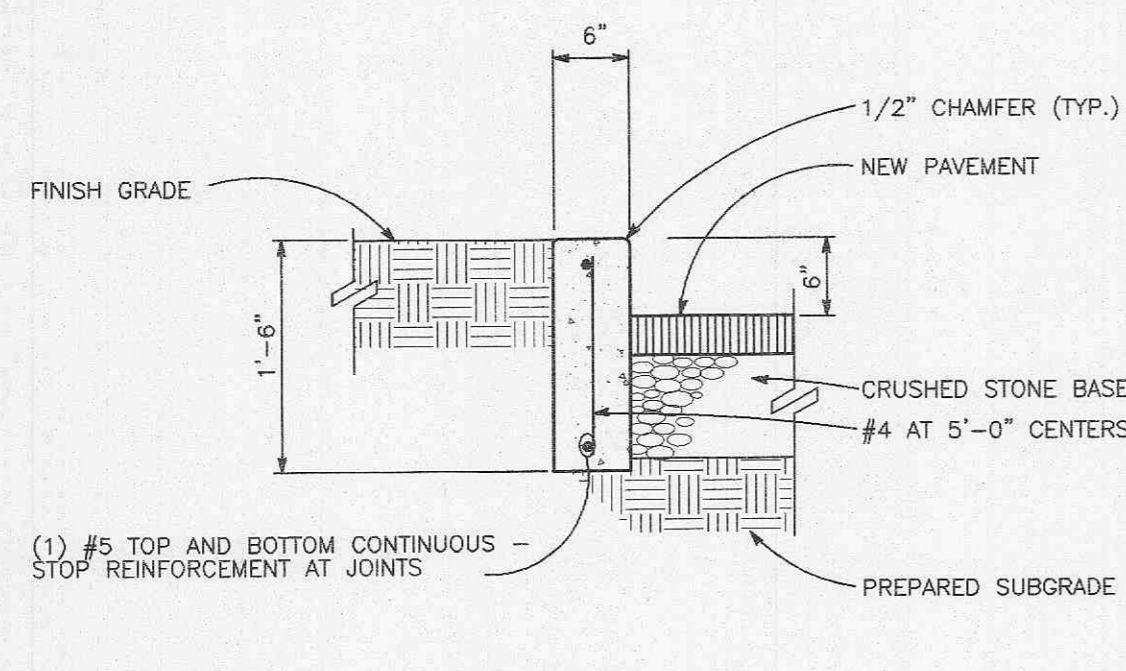
- PROVIDE HANDICAP RAMP WHERE TRAIL INTERSECTS ACCESS DRIVES OR STREETS OR WHERE TRAIL INTERSECTS WITH CURBING (SEE PLAN).
- PROVIDE STRIPING OR A COLORED TEXTURED PAVEMENT THROUGH THE ACCESS DRIVES OR STREETS INTO THE DEVELOPMENT.
- MAXIMUM SLOPE OF THE PATH SHALL NOT EXCEED 8% AND 2% CROSS SLOPE PER CITY OF FALLON SPECIFICATIONS.
- THE TRAIL SHALL BE CONSTRUCTED WITH A CONSISTENT SLOPE WITH VERTICAL CURVES A MINIMUM OF 50' IN LENGTH. AFTER FINAL COMPRESSION, THE SURFACE SHALL BE SMOOTH AND TRUE TO THE ESTABLISHED CROWN AND GRADE. ANY LOW OR DEFECTIVE PLACES SHALL IMMEDIATELY BE REPAIRED BY CUTTING OUT THE COURSE AT SUCH SPOTS AND REPLACING IT WITH FRESH HOT MIXTURE, WHICH SHALL BE IMMEDIATELY COMPACTED TO CONFORM WITH THE SURROUNDING AREA AND SHALL BE THOROUGHLY BONDED TO IT. THE FINISHED PAVEMENT SHALL BE SET FREE FROM DEPRESSIONS EXCEEDING ONE-EIGHTH INCH AS MEASURED WITH A TEN-FOOT STRAIGHT EDGE PARALLEL TO THE CENTERLINE OF THE TRAIL.



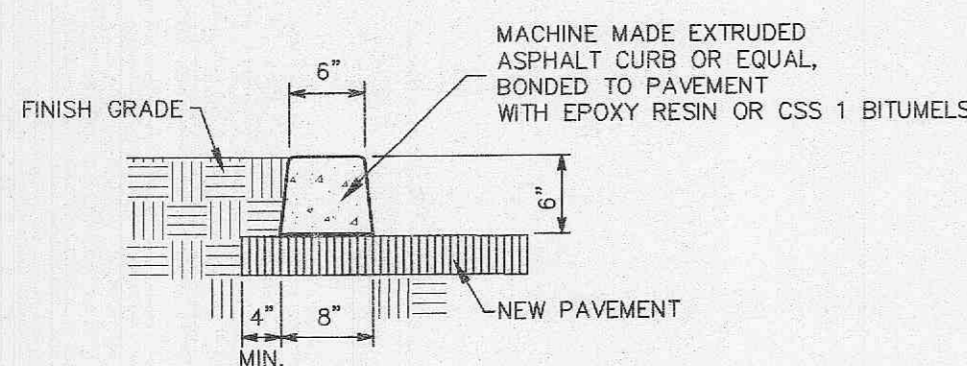
- FILTER BARRIERS SHALL BE INSPECTED IMMEDIATELY AFTER EACH RAINFALL AND AT LEAST DAILY DURING PROLONGED RAINFALL. ANY REQUIRED REPAIRS SHALL BE MADE IMMEDIATELY.
- SHOULD THE FABRIC DECOMPOSE OR BECOME INEFFECTIVE PRIOR TO THE END OF THE EXPECTED USABLE LIFE AND THE BARRIER STILL BE NECESSARY, THE FABRIC SHALL BE REPLACED PROMPTLY.
- SEDIMENT DEPOSITS SHOULD BE REMOVED AFTER EACH STORM EVENT. THEY MUST BE REMOVED WHEN DEPOSITS REACH APPROXIMATELY HALF THE HEIGHT OF THE BARRIER.
- ANY SEDIMENT REMAINING IN PLACE AFTER THE SILT FENCE OR FILTER BARRIER IS NO LONGER REQUIRED SHALL BE DRESSED TO CONFORM WITH THE EXISTING GRADE, PREPARED AND SEEDDED.



SILTATION FENCE DETAIL



CONCRETE CURB DETAIL
NOT TO SCALE

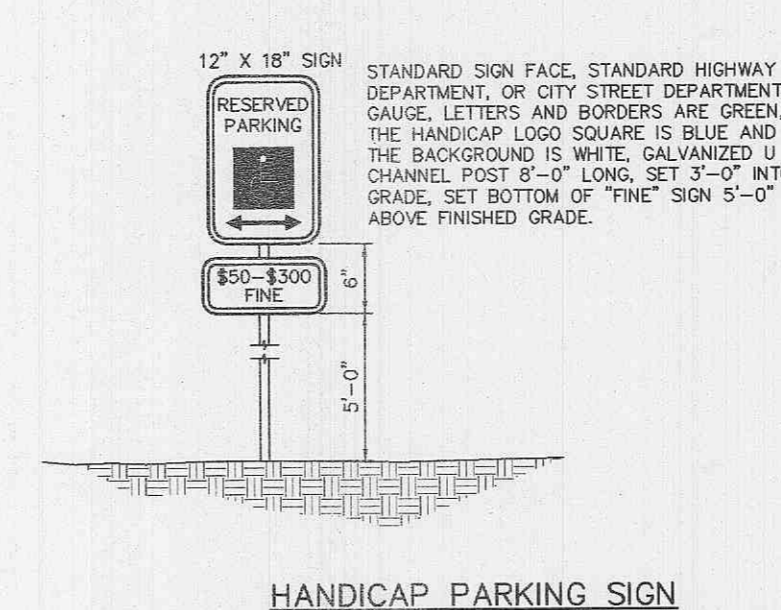


ALTERNATE ASPHALT
VERTICAL CURB
NOT TO SCALE

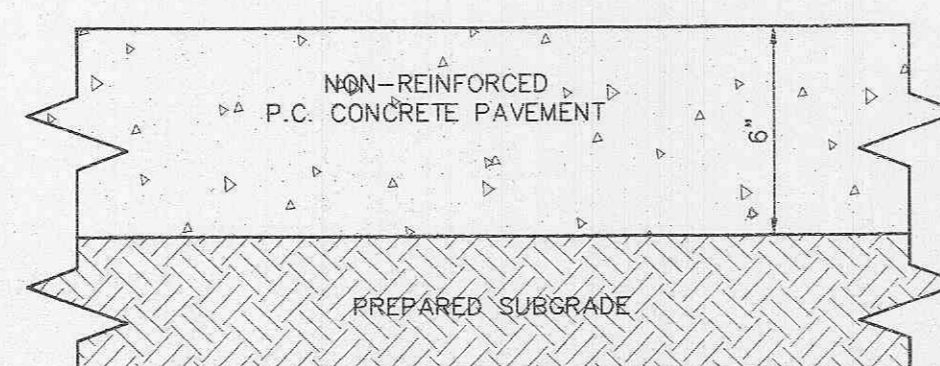


STANDARD SIGN FACE, STANDARD HIGHWAY DEPARTMENT, OR CITY STREET DEPARTMENT GAUGE. LETTERS AND BORDERS ARE GREEN, THE HANDICAP LOGO SQUARE IS BLUE AND THE BACKGROUND IS WHITE. GALVANIZED U CHANNEL POST 8'-0" LONG, SET 3'-0" INTO GRADE, SET BOTTOM OF "THE" SIGN 5'-0" ABOVE FINISHED GRADE.

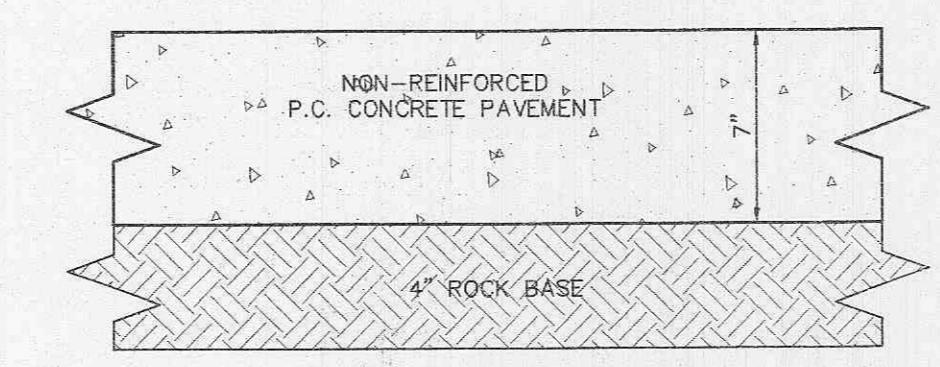
**VAN ACCESSIBLE
HANDICAP PARKING SIGN**



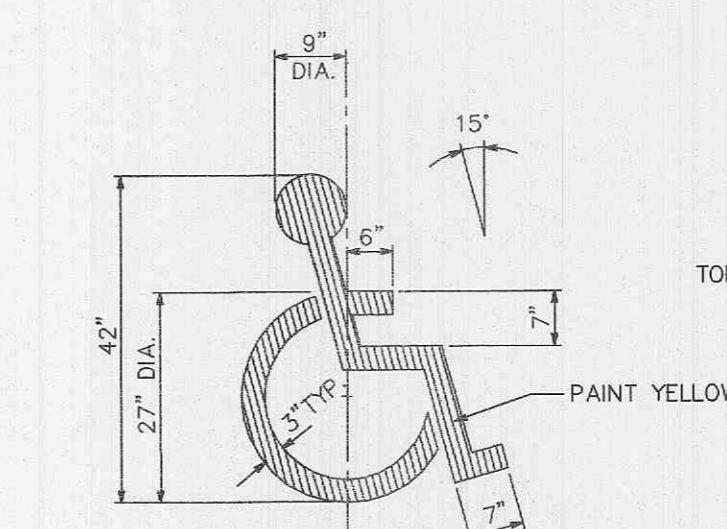
HANDICAP PARKING SIGN
NOT TO SCALE



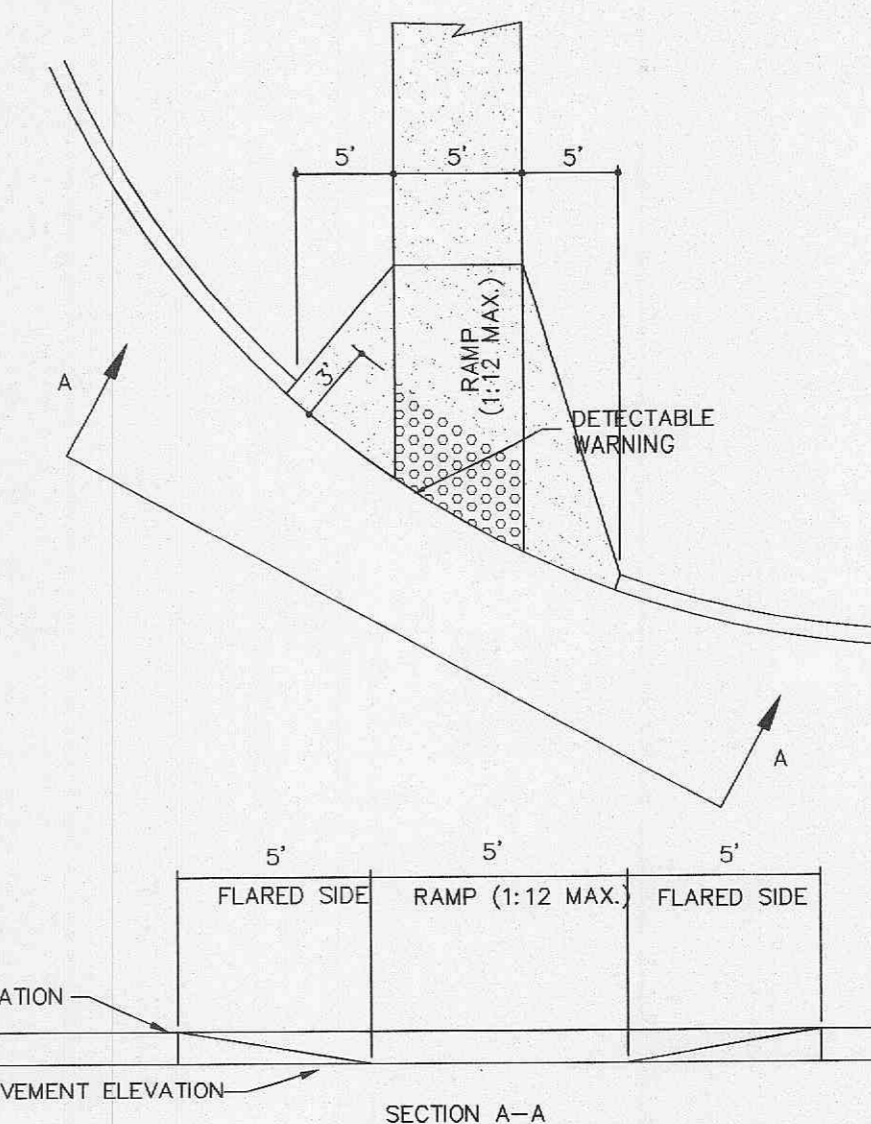
TRASH PAVEMENT DETAIL
NOT TO SCALE



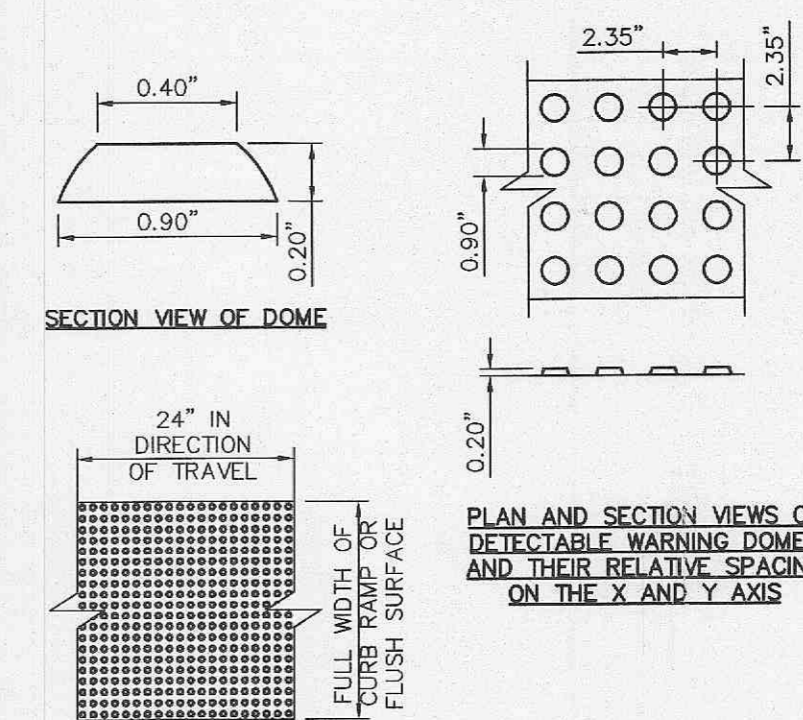
CONCRETE PAVEMENT DETAIL
NOT TO SCALE



PAINTED HANDICAPPED
PARKING SYMBOL
NOT TO SCALE

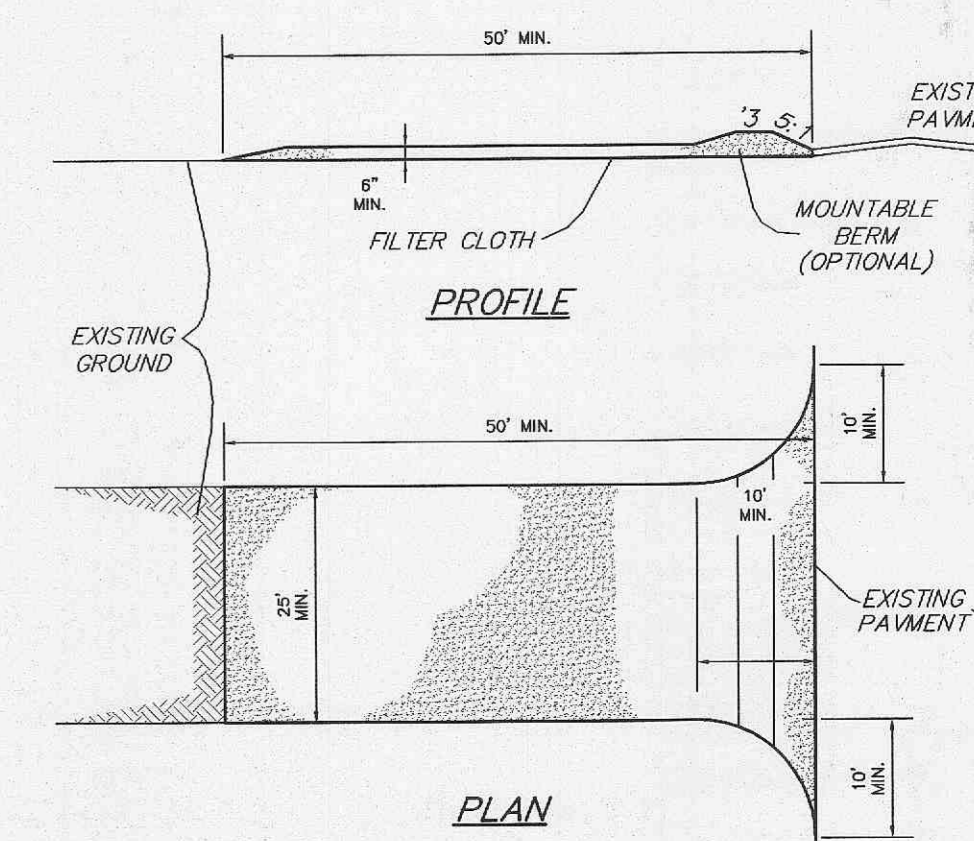


HANDICAPPED RAMP DETAIL
NOT TO SCALE



PLAN VIEW OF A DETECTABLE WARNING SURFACE
SHOWING DOMES ALIGNED IN ROWS, NOT SKEWED
DIAGONALLY.

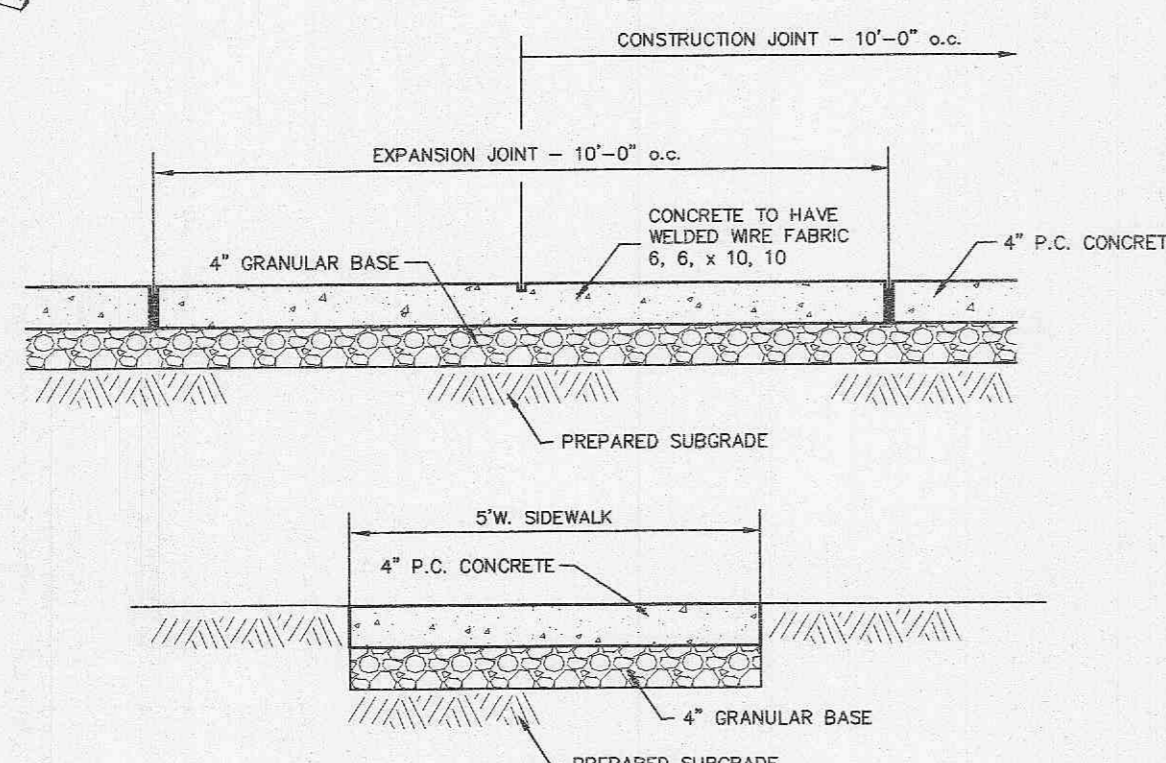
TYPICAL DETAIL OF DETECTABLE WARNING SURFACE
NOT TO SCALE



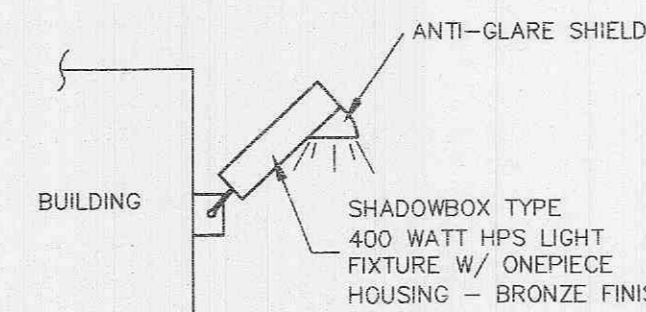
CONSTRUCTION SPECIFICATIONS

- Stone Size - Use 2" stone, or reclaimed or recycled concrete equivalent.
- Length - As required, but not less than 50 feet (except on a single residence lot where a 30 foot minimum length would apply).
- Thickness - Not less than six (6) inches.
- Width - Twenty (20) foot minimum, but not less than the full width at points where ingress or egress occurs.
- Filter Cloth - Will be placed over the entire area prior to placing of stone. Filter will not be required on a single family residence lot.
- Surface Water - All surface water flowing or diverted toward construction entrances shall be piped across the entrance. If piping is impractical, a mountable berm with 5:1 slopes will be permitted.
- Maintenance - The entrance shall be maintained in a condition which will prevent tracking or flowing of sediment onto public rights-of-way. This may require periodic top dressing with additional stone as conditions demand and repair and/or cleanout of any measures used to trap sediment. All sediment spilled, dropped, washed or tracked onto public rights-of-way must be removed immediately.
- Washing - Wheels shall be cleaned to remove sediment prior to entrance onto public rights-of-way. When washing is required, it shall be done on an area stabilized with stone and which drains into an approved sediment trapping device.
- Periodic inspection and needed maintenance shall be provided after each rain.

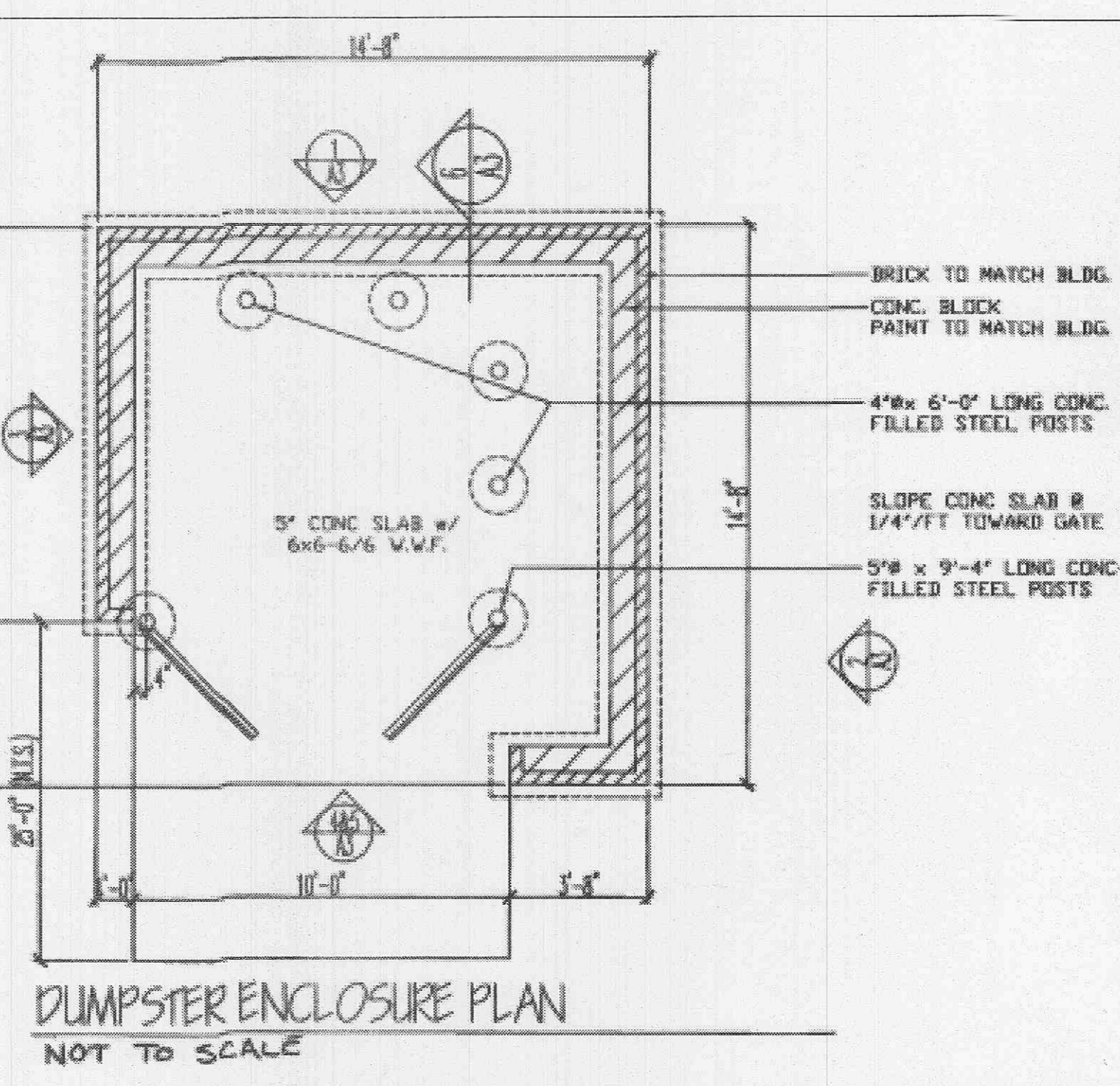
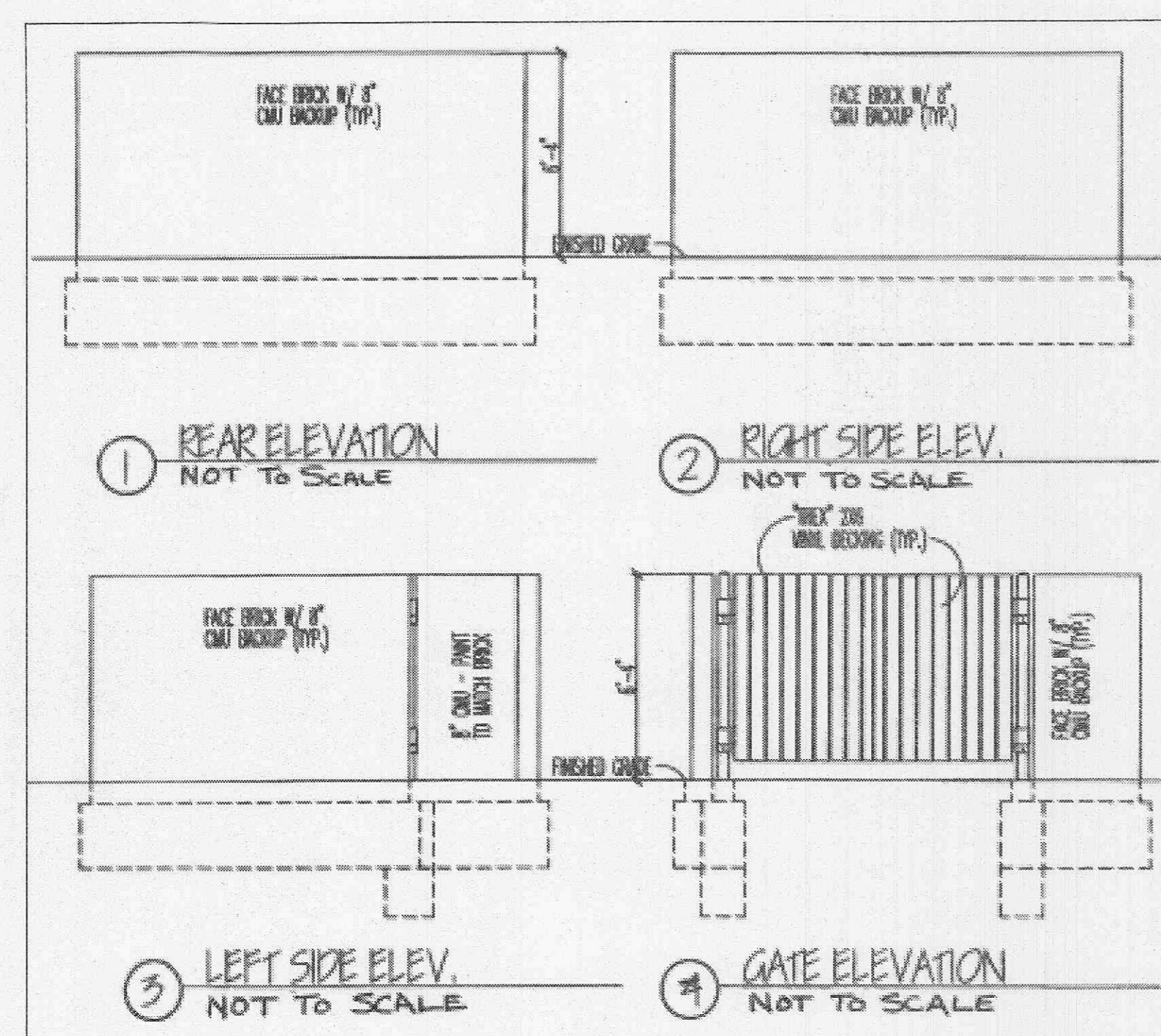
STABILIZED CONSTRUCTION ENTRANCE/WASHDOWN AREA
NOT TO SCALE



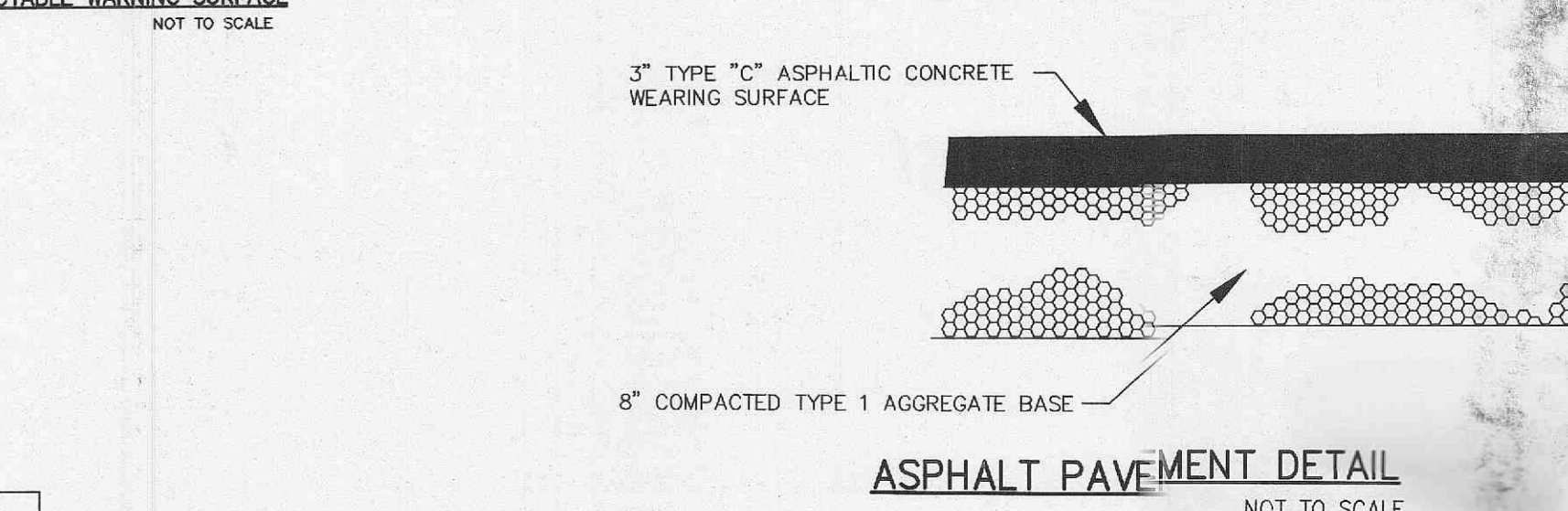
CONCRETE SIDEWALK WITH BASE DETAIL
NOT TO SCALE



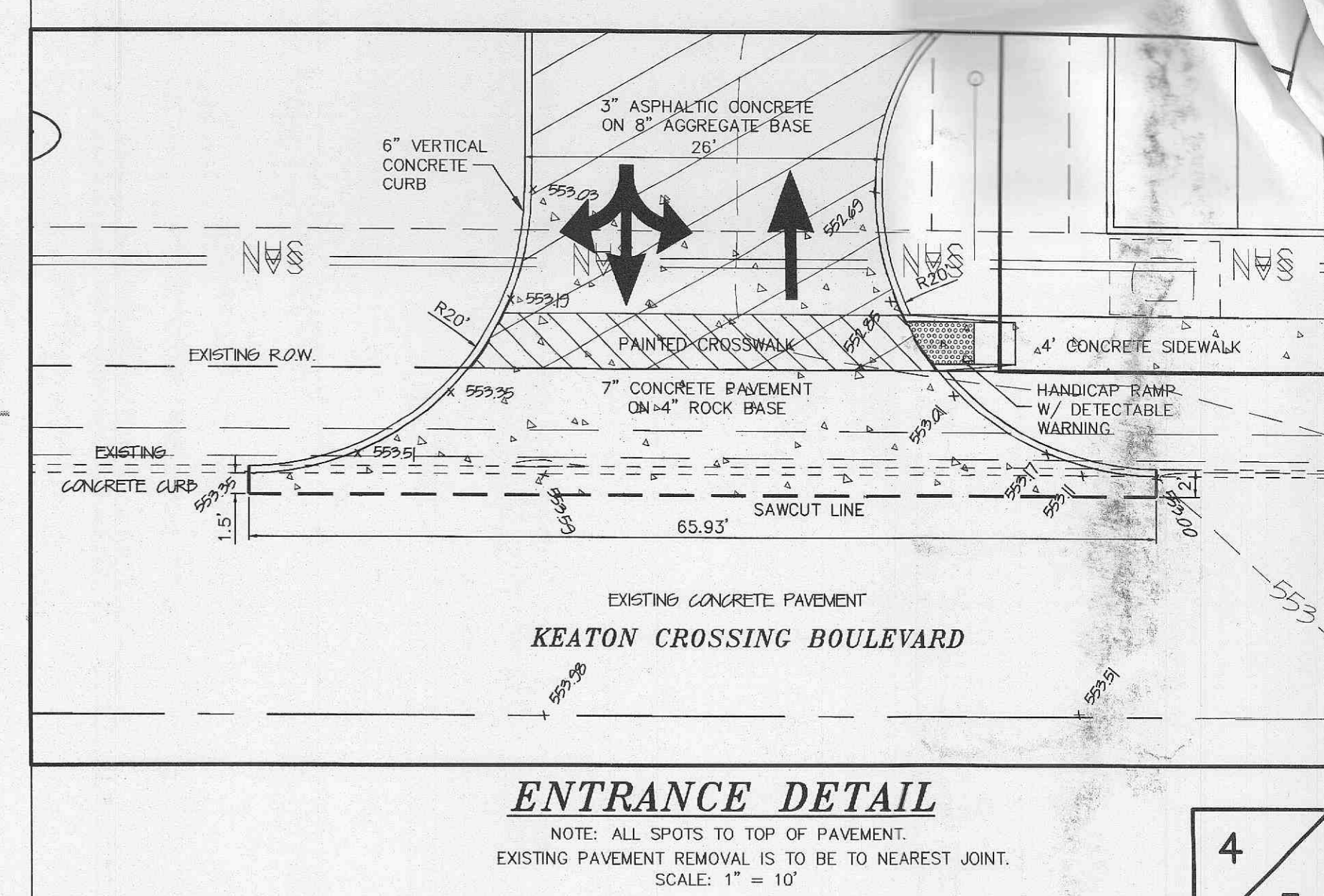
BUILDING MOUNTED LIGHT
NOT TO SCALE



DUMPSTER ENCLOSURE PLAN
NOT TO SCALE



ASPHALT PAVEMENT DETAIL
NOT TO SCALE



ENTRANCE DETAIL

NOTE: ALL SPOTS TO TOP OF PAVEMENT.
EXISTING PAVEMENT REMOVAL IS TO BE TO NEAREST JOINT.
SCALE: 1" = 10'