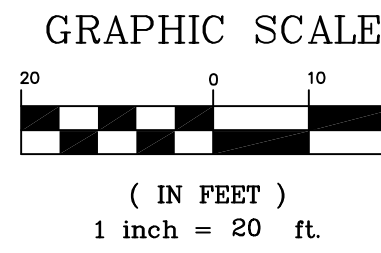


**EXISTING DRAINAGE AREA MAP**



**EXISTING DRAINAGE AREA**

D.A.	QTY.	"Q"
A SHEET FLOWS TO DITCH ALONG TRACKS	0.34 Ac.(2.58) + 0.19 Ac.(6.08)	= 2.03 c.f.s.
		2.03 c.f.s.

**PROPOSED DRAINAGE AREA**

D.A.	QTY.	"Q"
A SHEET FLOWS TO DITCH ALONG TRACKS	0.12 Ac.(2.58) + 0.12 Ac.(6.08)	= 1.03 c.f.s.
B SHEET FLOWS TO DITCH ALONG TRACKS	0.06 Ac.(2.58) + 0.22 Ac.(6.08)	= 1.51 c.f.s.
C SHEET FLOWS TO DITCH ALONG TRACKS	0.00 Ac.(2.58) + 0.06 Ac.(6.08)	= 0.40 c.f.s.
		2.94 c.f.s.

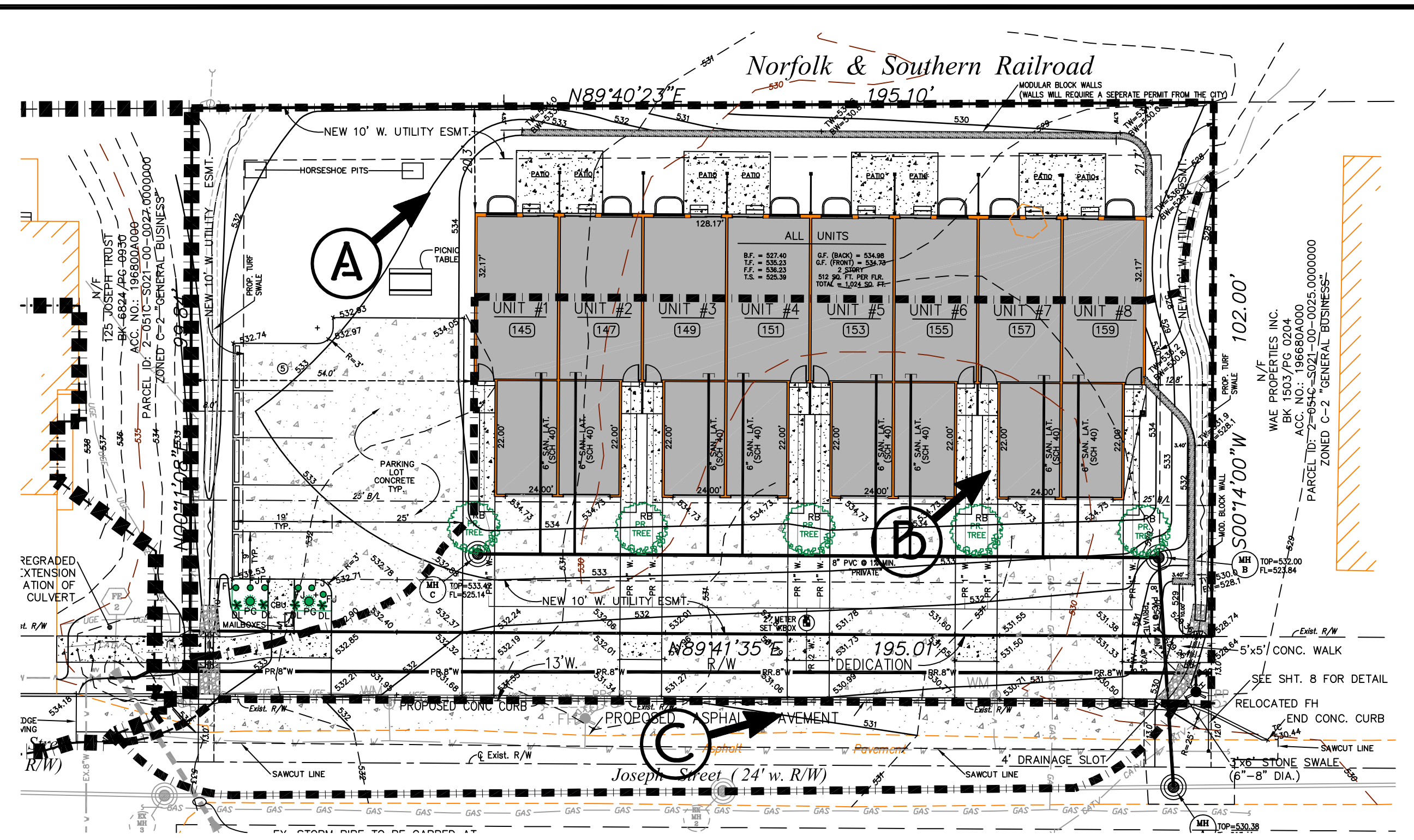
**STORM RUN-OFF CALCULATIONS**

100 YR./20 MIN. STORM EVENT  
 P.I. = 2.95 (PERVIOUS)  
 P.I. = 6.08 (IMPERVIOUS)

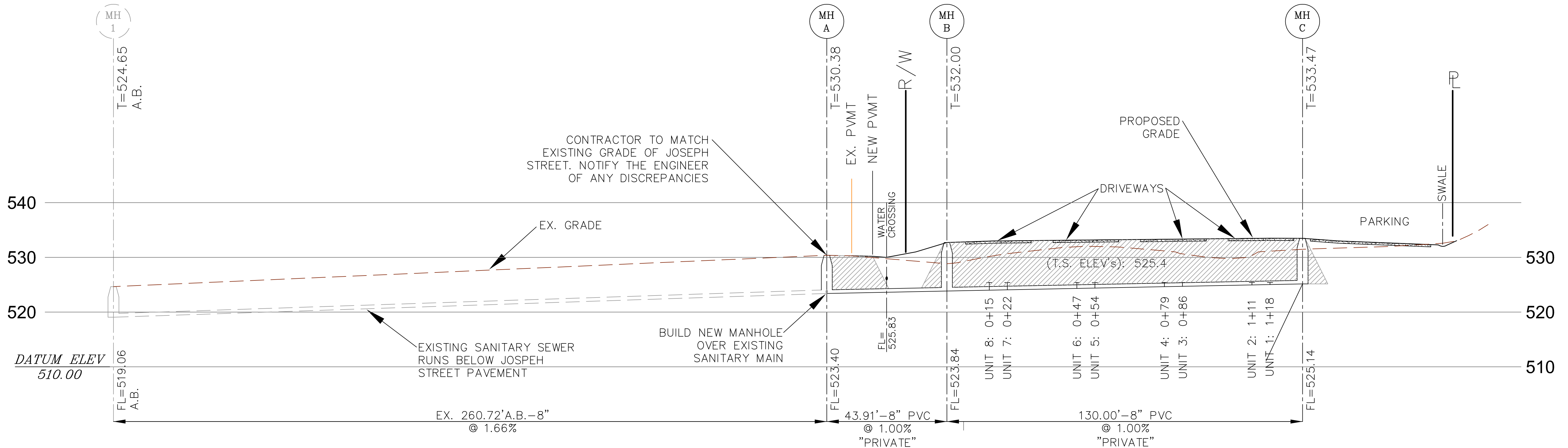
UNDEVELOPED CONDITIONS: Q = 0.34 Ac.(2.95) + 0.17 Ac.(6.08) = 2.03 c.f.s.  
 DEVELOPED CONDITIONS: Q = 0.18 Ac.(2.95) + 0.41 Ac.(6.08) = 2.94 c.f.s.

DIFFERENTIAL Q:  
 Q = 2.94 - 2.03  
 = 0.91 c.f.s.

A WAIVER OF DETENTION IS REQUESTED SINCE THE SITE IS LESS THAN ONE ACRE AND THE ADDITIONAL RUNOFF IS LESS THAN ONE CUBIC FOOT PER SECOND.



**PROPOSED DRAINAGE AREA MAP**



**SANITARY SEWER EX. MH I - MH C**

SCALE: HORZ 1"=20'  
 VERT. 1"=10'

DIG-RITE TICKET #s: 182832698 (JOSEPH STREET)

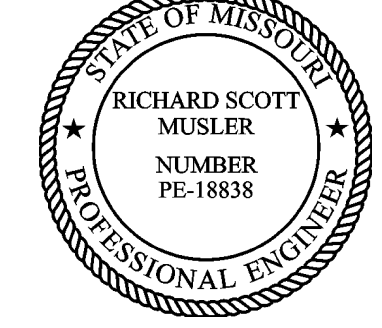
Call Before you DIG  
 TOLL FREE  
 1-800-344-7483  
 or 811  
 MISSOURI ONE-CALL SYSTEM INC.



Underground facilities, structures and utilities have been plotted from available surveys, records and information, and therefore, do not necessarily reflect the actual existence, non-existence, size, type, number of, or location of these facilities, structures and utilities. The Contractor shall be responsible for verifying the actual location of all underground facilities, structures, and utilities, either shown or not shown on these plans. The underground facilities, structures and utilities shall be located in the field prior to any grading, excavation or construction of improvements. These provisions shall in no way absolve any party from complying with the Underground Facility Safety and Damage Prevention Act, Chapter 319, RSMo.



The Professional Engineer's and/or Professional Land Surveyor's responsibility is limited to plans and other documents displaying his/her signature and seal. Engineer and Surveyor hereby disclaim responsibility for:  
 \* Unauthorized use of plans on other documents prior to receipt of all review agency approvals  
 \* All previously issued versions of this sheet  
 \* This sheet whenever a revised sheet is issued  
 \* Individual use of any sheet that is part of a set of plans  
 This applies to all plans and other documents associated with this project, whether this statement appears on them or not.



Client  
**125 Joseph Trust**  
 1278 Jungermann Road, Suite F  
 St. Peters, MO 63376  
 636-262-4473  
 N/A  
 Mr. Paul James  
 paul@stcharlesrent.com

No.	Date	Revision/Issue
1	3-19-19	Rev. per City comments 02-26-19
2	4-17-19	Rev. per City comments 04-11-19

**Joseph Street Townhomes Phase Two**  
 DAM / Details  
**MUSLER ENGINEERING COMPANY**  
 CIVIL ENGINEERING - PLANNING - LAND SURVEYING  
 32 PORTWEST COURT - SAINT CHARLES, MISSOURI 63303-5985  
 PHONE: 636-916-0444 • FAX: 636-916-3444  
 CERTIFICATE OF AUTHORITY: ENGINEERING: E-1230-D, LAND SURVING: LS-284-D

CITY OF O'FALLON  
 File #: 19-000810  
 Permit #: CSP19-000004  
 P & Z #: 18-012179  
 City Council #: 18-012331

City/County Job No:  
 Checked:  
 Proj Manager:  
 Original Issue Date  
 Nov., 2018  
 Project No.  
 18-1492  
 Sheet  
**4**