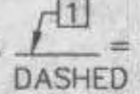
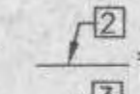
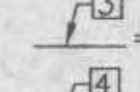
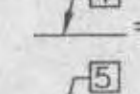
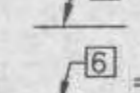

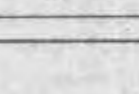
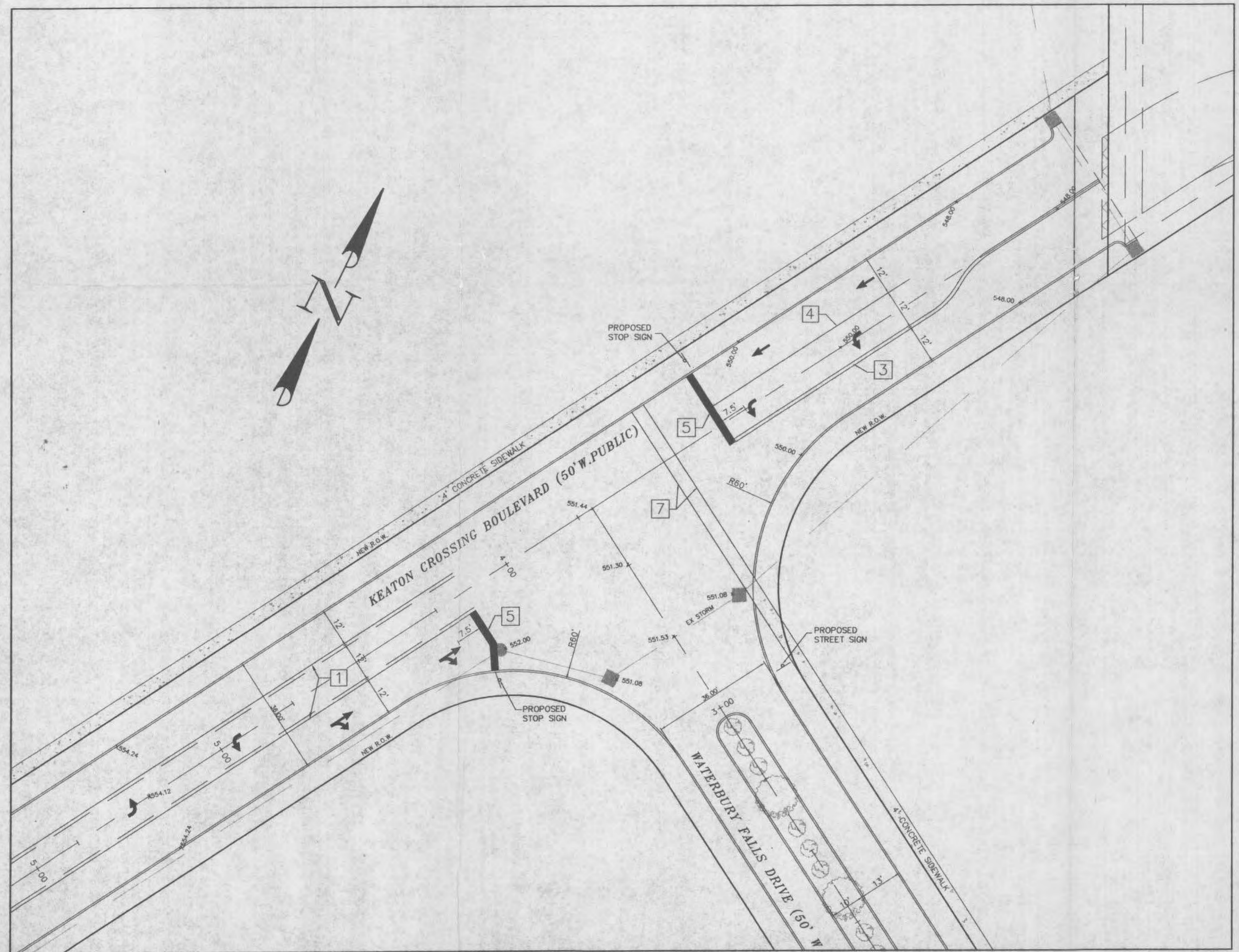


NOTES
 1. ALL PAVEMENT MARKINGS AND SIGNS SHALL CONFORM TO THE COLORS, STANDARDS AND SPECIFICATIONS REFERENCED IN THE "MANUAL ON UNIFORM TRAFFIC CONTROL DEVICES" LATEST EDITION.

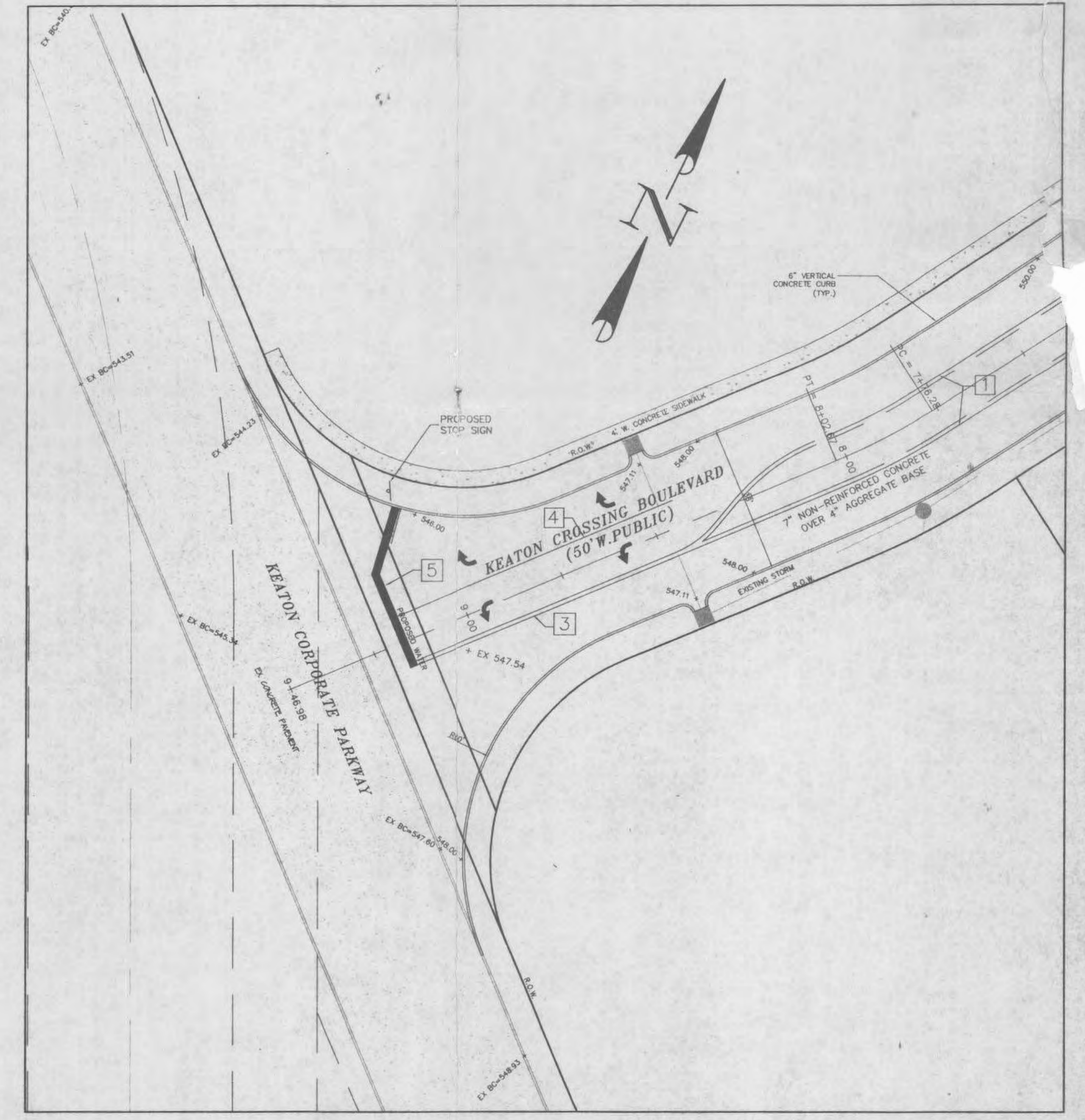
2.  = 4" SOLID YELLOW LINE WITH 4" DASHED YELLOW LINE (6" OPEN SPACE BETWEEN SOLID AND DASHED LINE. DASHED LINES ARE 10' LONG WITH 30' SPACES)

STRIPING KEY

-  = 4" DASHED WHITE LINE
-  = DOUBLE 4" SOLID YELLOW LINE
-  = 4" SOLID WHITE LINE
-  = WHITE STOP LINE
-  = 4" SOLID YELLOW LINE
-  = 6" SOLID WHITE LINE



WATERBURY FALLS DRIVE & KEATON CROSSING BOULEVARD
 SCALE: 1" = 20'



KEATON CORPORATE PARKWAY & KEATON CROSSING BOULEVARD
 SCALE: 1" = 20'