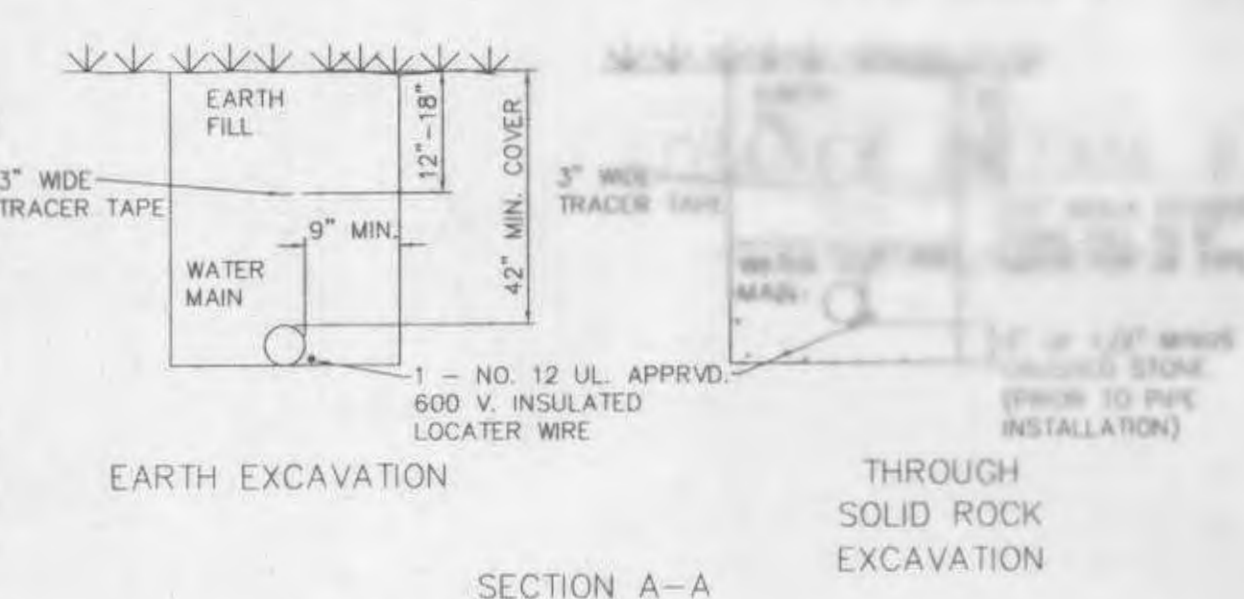
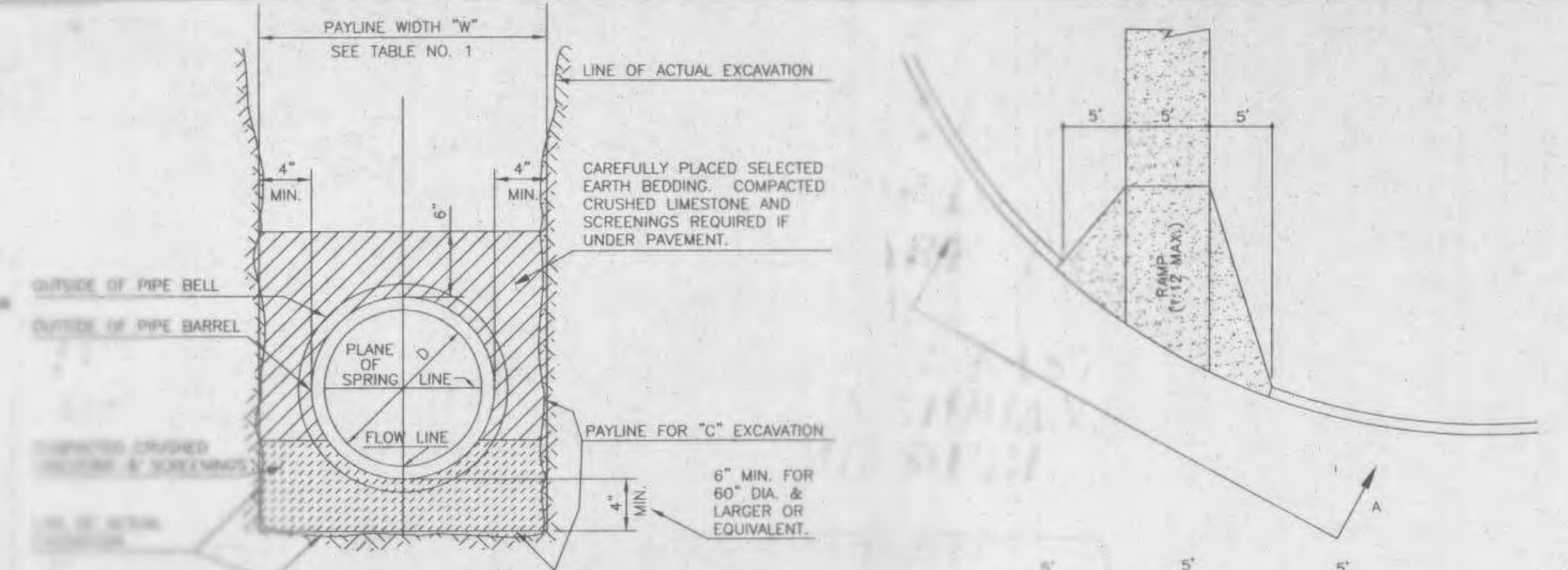


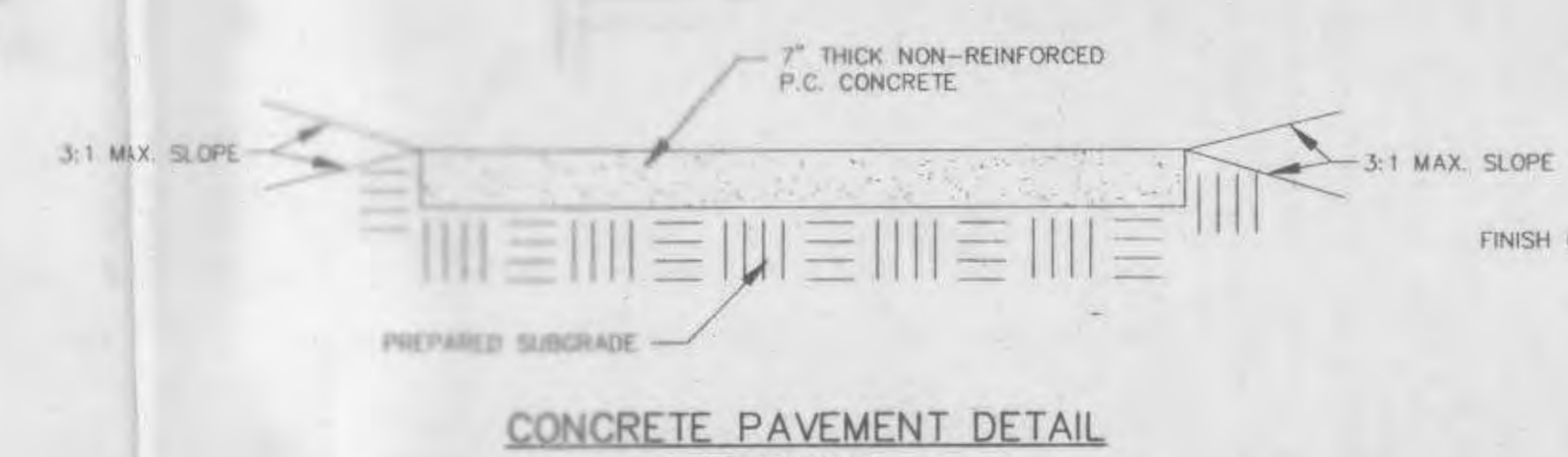
EXCAVATE FOR JOINT AS REQUIRED. PIPE IS TO BE FULLY SUPPORTED. NO HIGH OR LOW SPOTS WILL BE PERMITTED.



**TYPICAL WATER MAIN INSTALLATION DETAILS**  
NOT TO SCALE



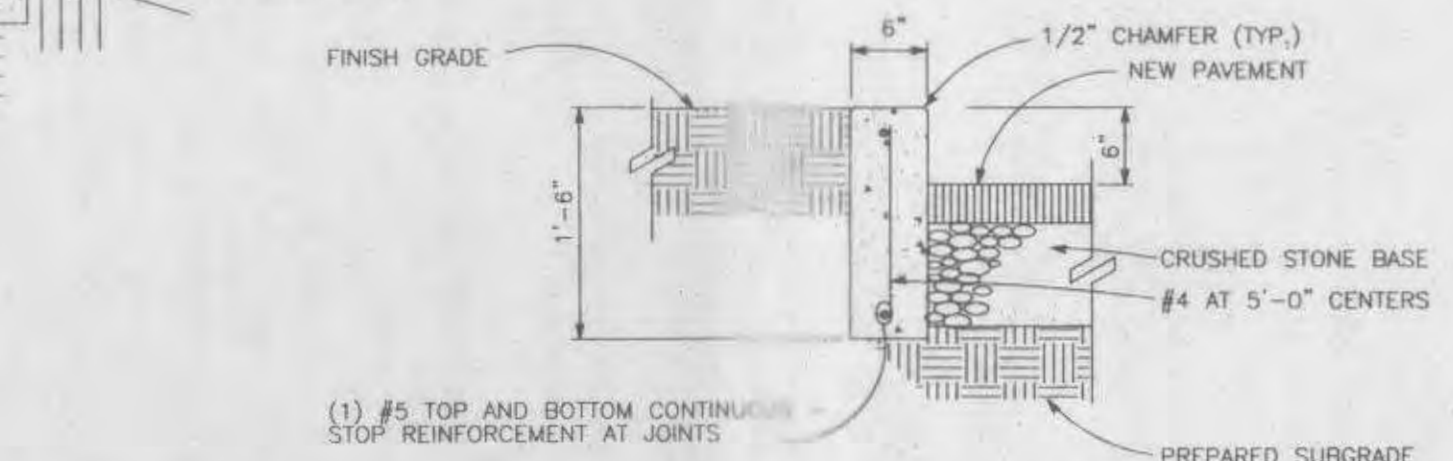
**PIPE BEDDING CLASS "C"**  
(MODIFIED FOR REINFORCED CONCRETE PIPE)



**CONCRETE PAVEMENT DETAIL**  
NOT TO SCALE



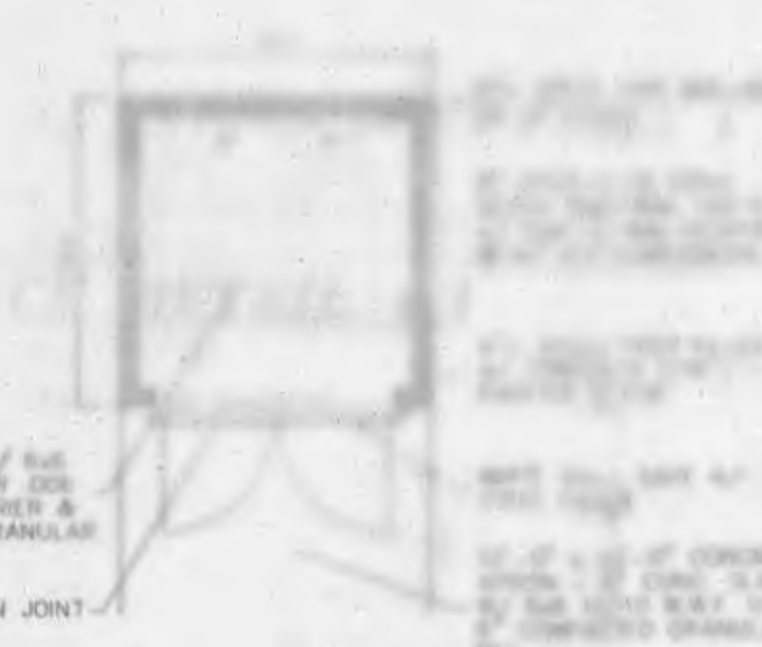
**HANDICAPPED RAMP DETAIL**  
NOT TO SCALE



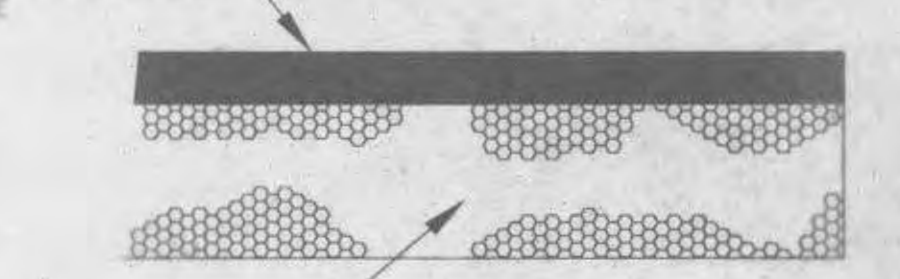
**CONCRETE CURB DETAIL**  
NOT TO SCALE



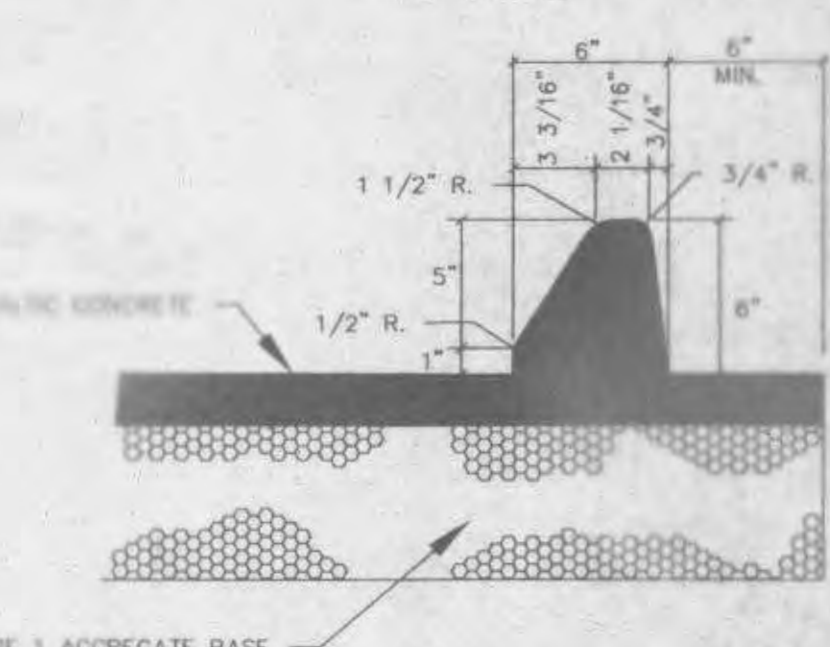
**TRASH ENCLOSURE ELEVATION**  
NOT TO SCALE



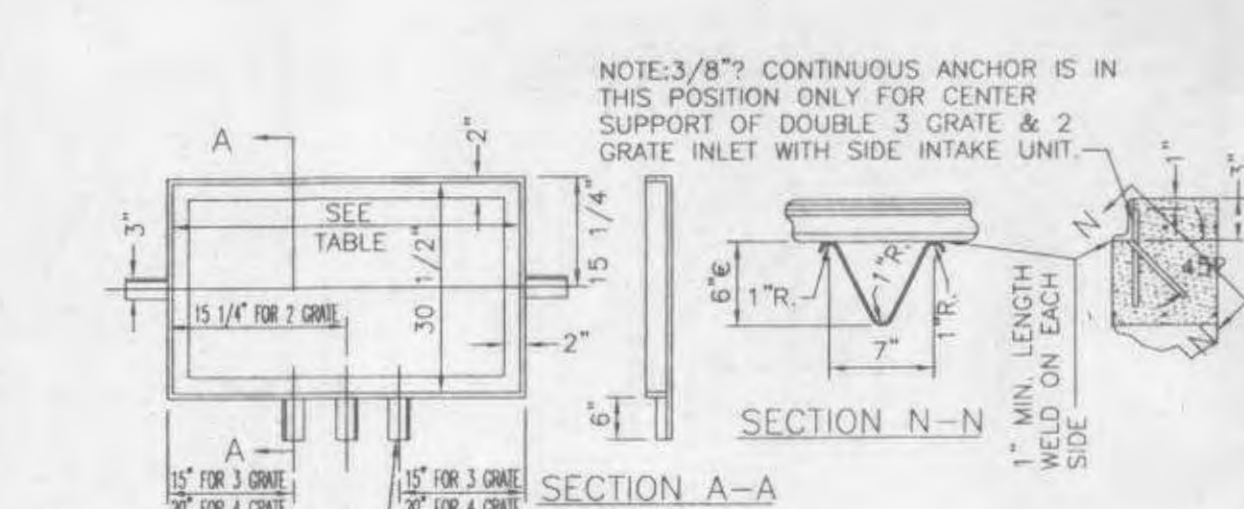
**TRASH ENCLOSURE PLAN**  
NOT TO SCALE



**ASPHALT PAVEMENT DETAIL**  
NOT TO SCALE

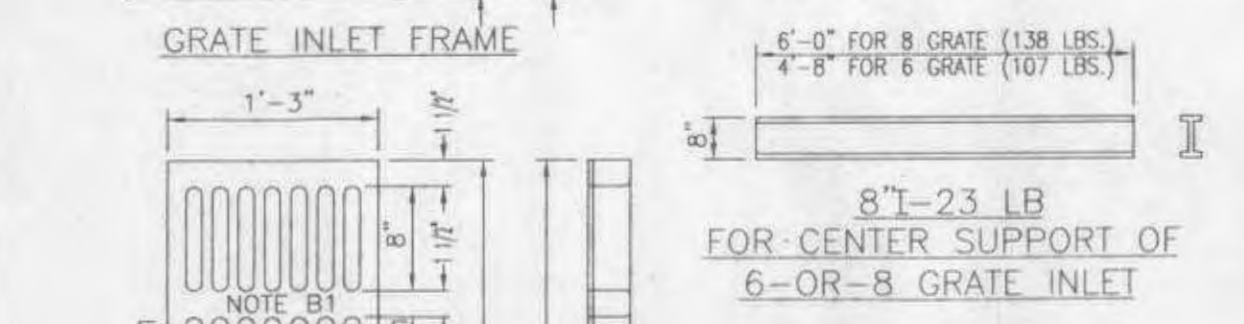


**ASPHALT CURB & PAVEMENT DETAIL**  
NOT TO SCALE



NOTE: 3/8" CONTINUOUS ANCHOR IS IN THIS POSITION ONLY FOR CENTER SUPPORT OF DOUBLE 3 GRATE & 2 GRATE INLET WITH SIDE INTAKE UNIT.

**DETAIL OF CONTINUOUS FOR ANGLE SEA**



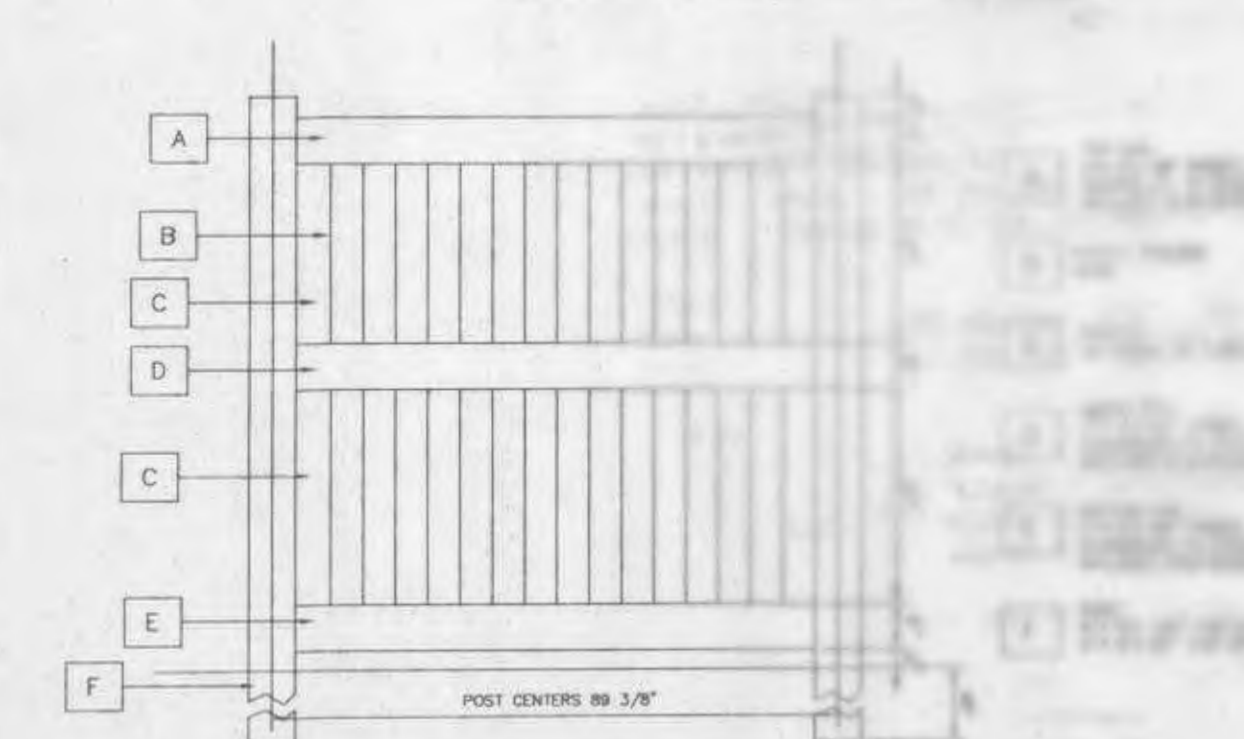
**8" - 23 LB FOR CENTER SUPPORT OF 6-OR-8 GRATE INLET**

| Grate Size                  | Weight  |
|-----------------------------|---------|
| 2 GRATE = 30 1/2" x 30 1/2" | 138 LBS |
| 3 GRATE = 30 1/2" x 45 1/2" | 167 LBS |
| 4 GRATE = 30 1/2" x 60 1/2" | 216 LBS |

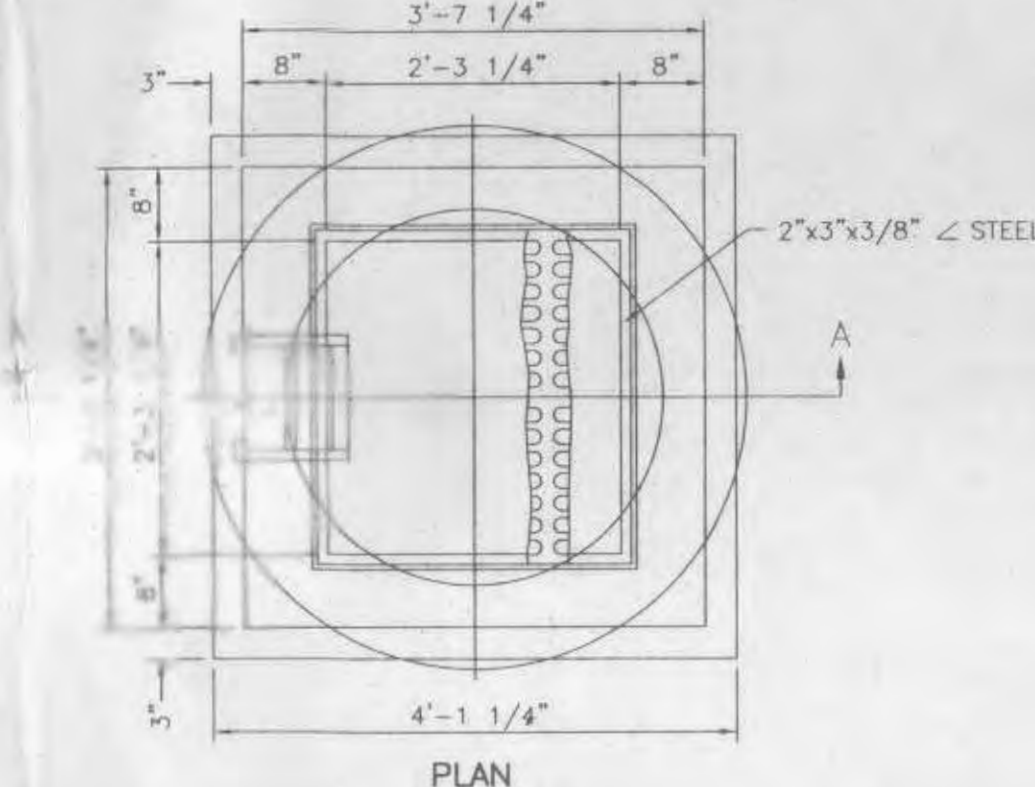
NOTE B: PROVIDE 1/8" RAISED LETTERING APPROX. 3/4" TO 1" HIGH.  
B1: METRO ST. LOUIS  
B2: SEWER DIST. SEWERS

MATERIAL: CAST GRAY IRON ASTM. A48 CLASS 35B COATING SPEC. PER MSD SPEC. (0-01" COLD TAR)  
**CAST IRON GRATE**  
(NF-41164 OR EQUAL)

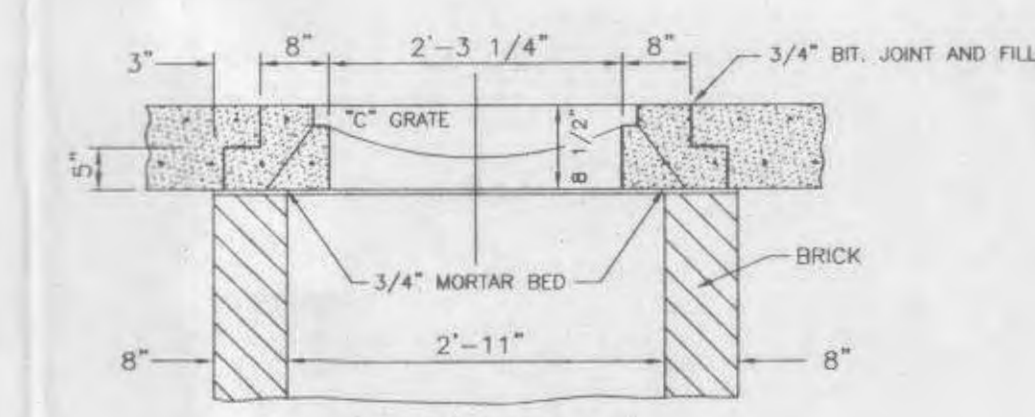
**DETAILS OF INLET FRAME AND GRATES**



**6" HIGH VINYL PRIVACY FENCE**  
NOT TO SCALE



**PLAN**



**SECTION A-A**

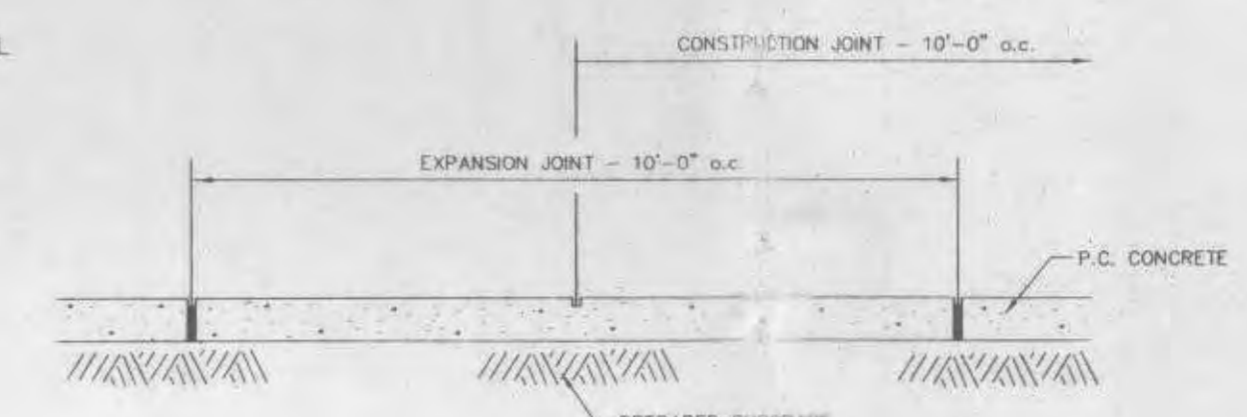
**2 GRATE INLET**

NOTE: INLETS ON THIS SHEET ARE TO BE USED IN LOCATIONS WHERE STANDARD OPEN THROAT INLETS CAN NOT BE USED, IN PAVED TRAFFIC WAY, AND IN LIMITED EASEMENTS.

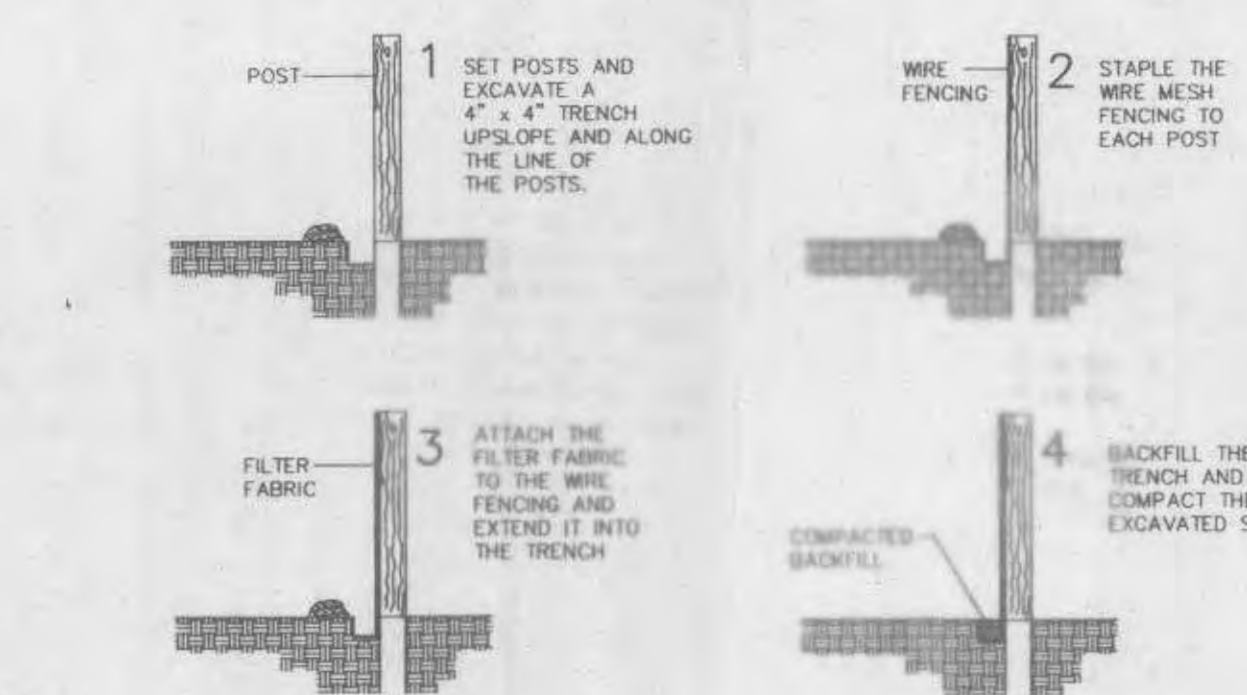
IMPROVED A.W.W.A. TRAFFIC MODEL 3-WAY FIRE HYDRANT AMERICAN DARLING B-84-B, ULFM



**HYDRANT INSTALLATION DETAIL**  
NOT TO SCALE



**CONCRETE SIDEWALK DETAIL**  
NOT TO SCALE



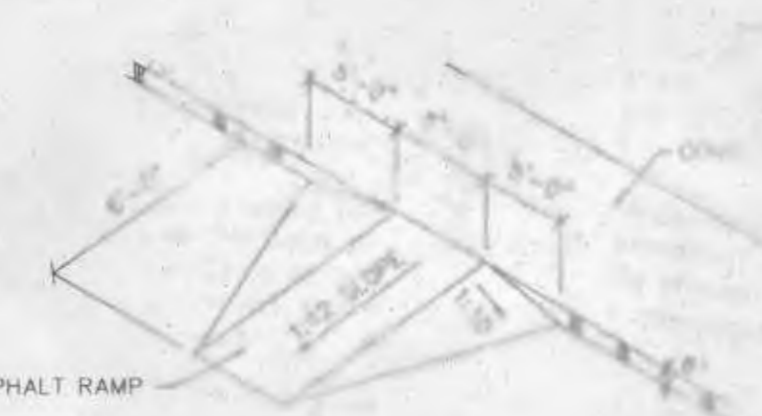
1. FILTER BARRIERS SHALL BE INSPECTED IMMEDIATELY AFTER EACH RAINFALL AND AT LEAST DAILY DURING PROLONGED RAINFALL. ANY REQUIRED REPAIRS SHALL BE MADE IMMEDIATELY.
2. SHOULD THE FABRIC DECOMPOSE OR BECOME INEFFECTIVE PRIOR TO THE END OF THE EXPECTED USABLE LIFE AND THE BARRIER STILL BE NECESSARY, THE FABRIC SHALL BE REPLACED PROMPTLY.
3. SEDIMENT DEPOSITS SHOULD BE REMOVED AFTER EACH STORM EVENT. THEY MUST BE REMOVED WHEN DEPOSITS REACH APPROXIMATELY HALF THE HEIGHT OF THE BARRIER.
4. ANY SEDIMENT DEPOSITS REMAINING IN PLACE AFTER THE SILT FENCE OR FILTER BARRIER IS NO LONGER REQUIRED SHALL BE DRESSED TO CONFORM WITH THE EXISTING GRADE, PREPARED AND SEDED.

**SILTATION FENCE DETAIL**  
NOT TO SCALE

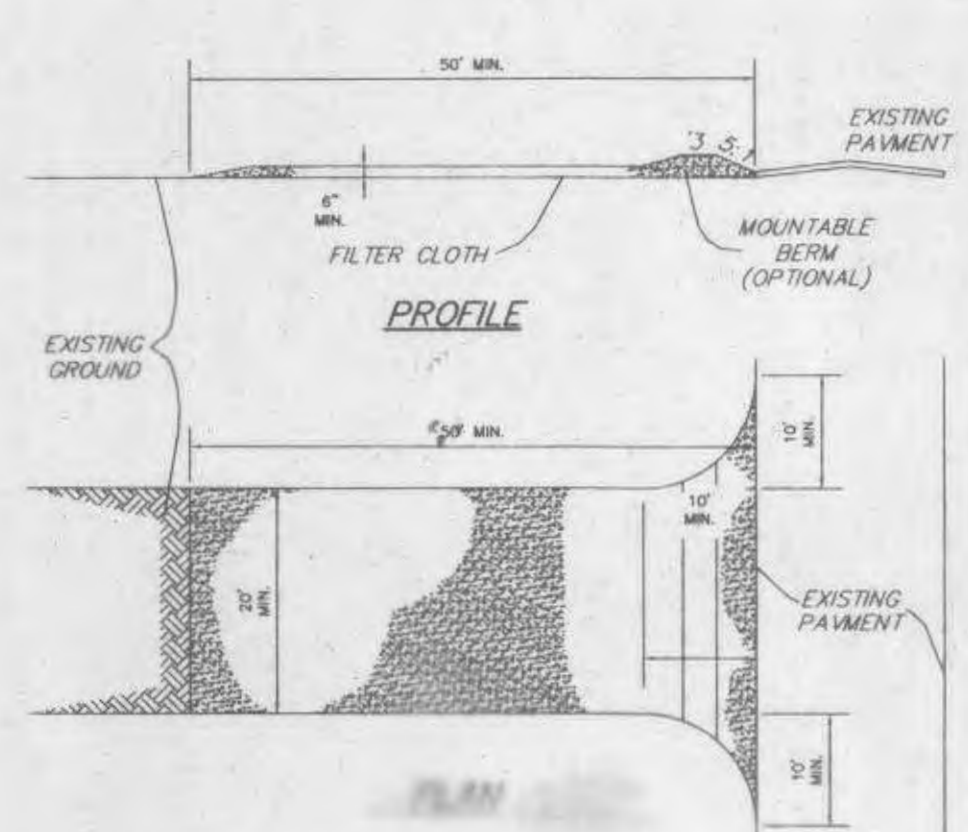


STANDARD SIGN FREE, STANDARD HIGHWAY DEPARTMENT, OR CITY STREET DEPARTMENT GAUGE, LETTERS AND BORDERS ARE GREEN, THE HANDICAP SYMBOL SQUARE IS BLUE AND THE BACKGROUND IS WHITE, GALVANIZED U CHANNEL POST 7'-0" LONG, SET 3'-0" INTO GRADE, SET BOTTOM OF SIGN 4'-0" ABOVE FINISHED GRADE.

**HANDICAP PARKING SIGN**

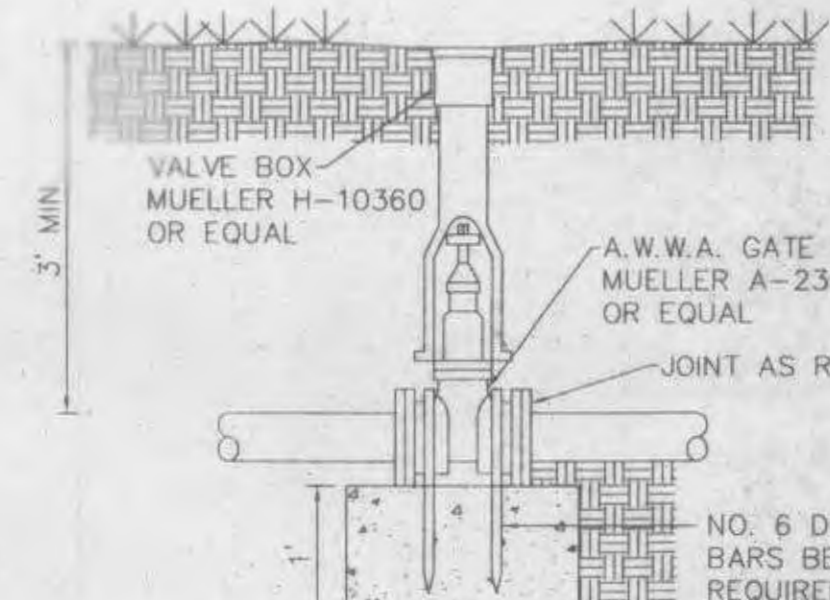


**HANDICAPPED RAMP DETAIL**  
NOT TO SCALE



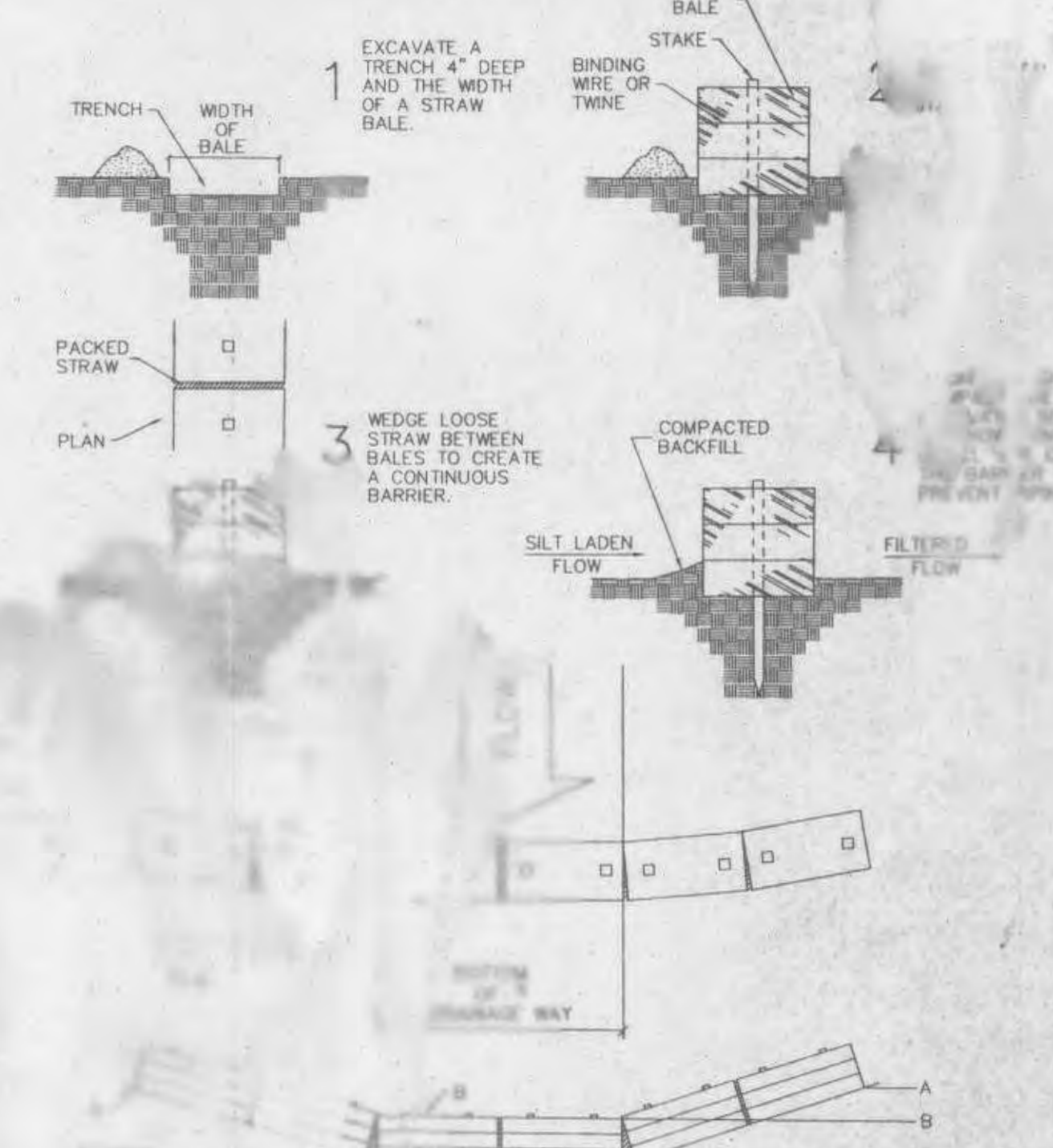
1. Stone Size - Use 2" maximum diameter. 1/4" maximum openings required.
2. Length - As required, but shall be a minimum length of 10 feet.
3. Thickness - Not less than 18 inches.
4. Width - Twenty (20) feet minimum, but shall be a minimum of 10 feet.
5. Filter Cloth - Not less than 100 mesh.
6. Surface Water - All surface water shall be directed to the entrance of the drainage way.
7. Maintenance - The entrance shall be inspected and maintained to ensure that it is free of sediment and debris. If sediment or debris accumulates, it shall be removed. If the entrance is damaged, it shall be repaired. The entrance shall be washed after each storm event.
8. Washing - Wheels shall be washed after each storm event. When washing is required, it shall be done in a manner that does not create a sediment trap.
9. Periodic inspection and maintenance shall be required.

**STABILIZED CONSTRUCTION ENTRANCE**



**GATE VALVE W/TH**  
NOT TO SCALE

STRAW BALES BARRIERS FOR URBAN DEVELOPMENT SITES  
APPENDIX C



**LAYOUT AND CONSTRUCTION OF A STRAW BALE BARRIER**