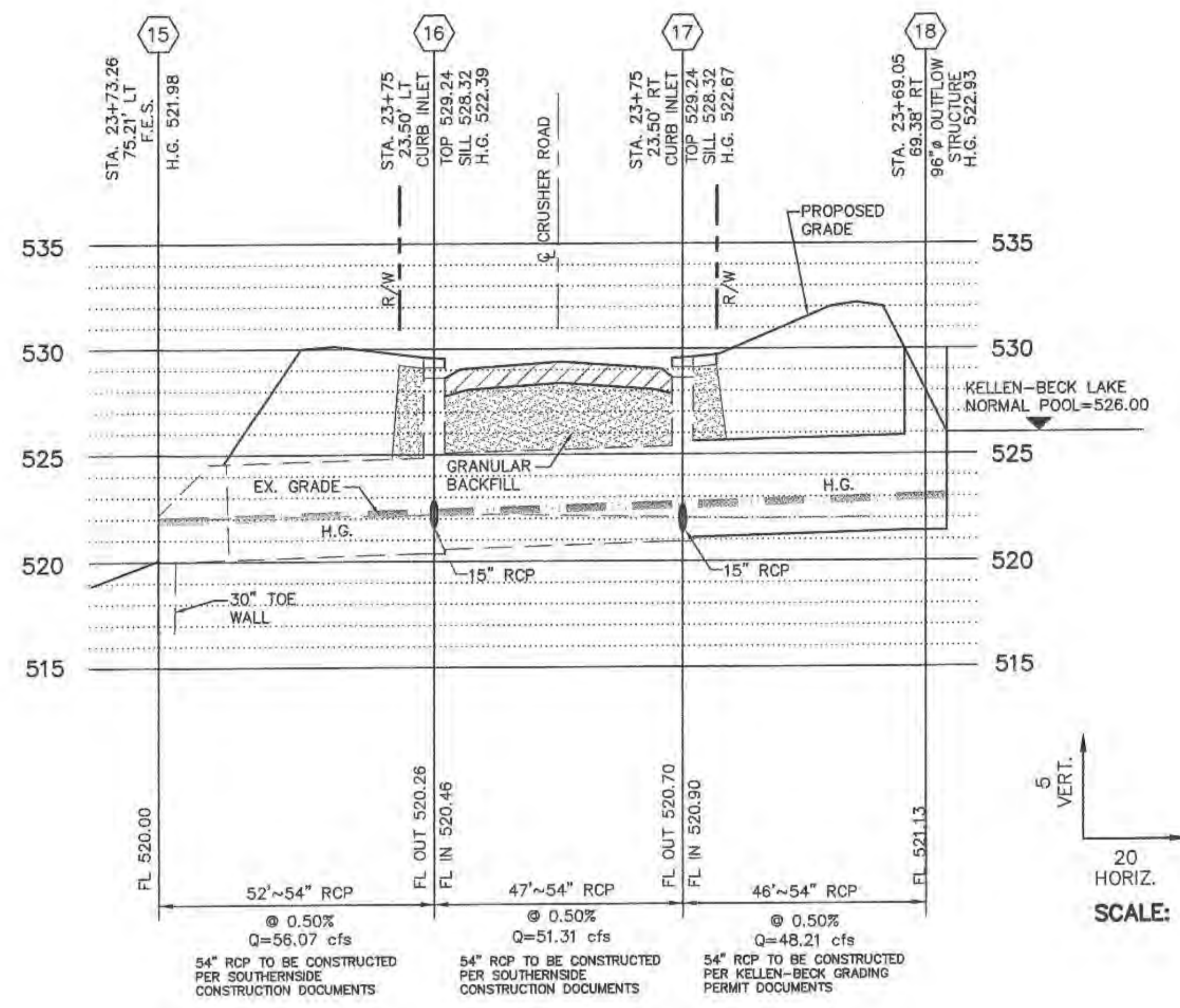
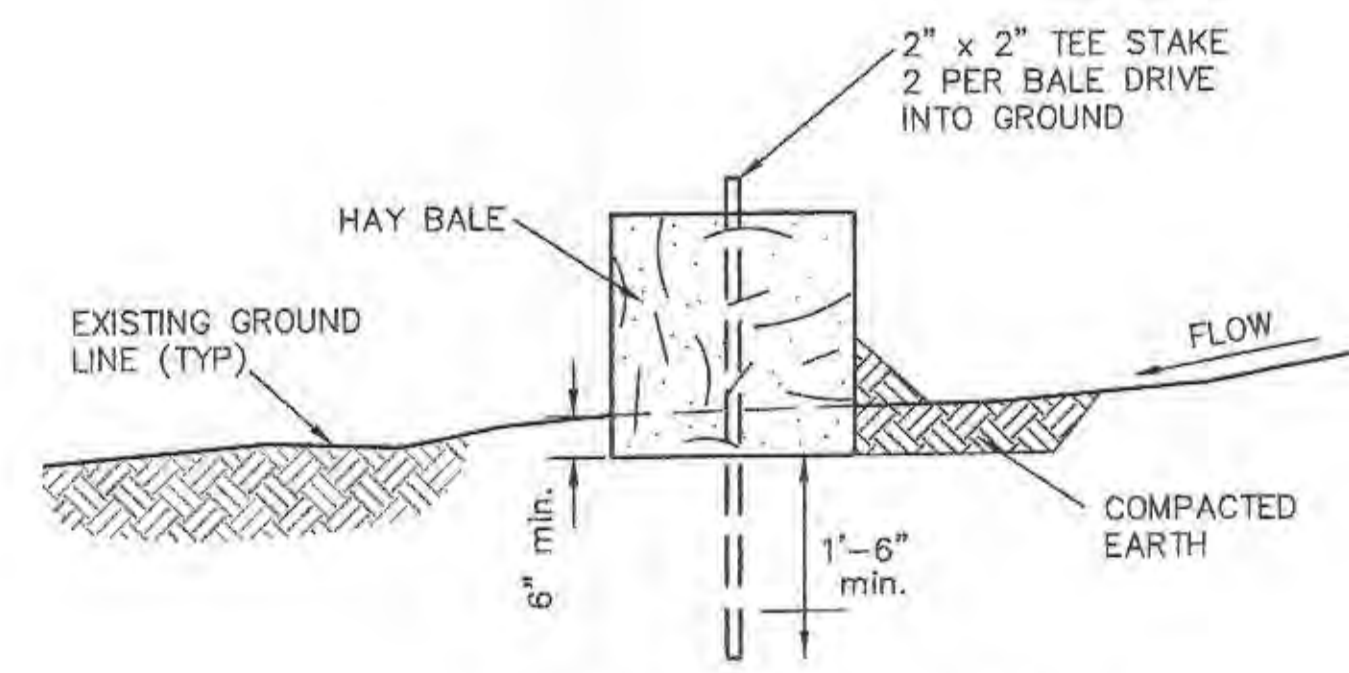
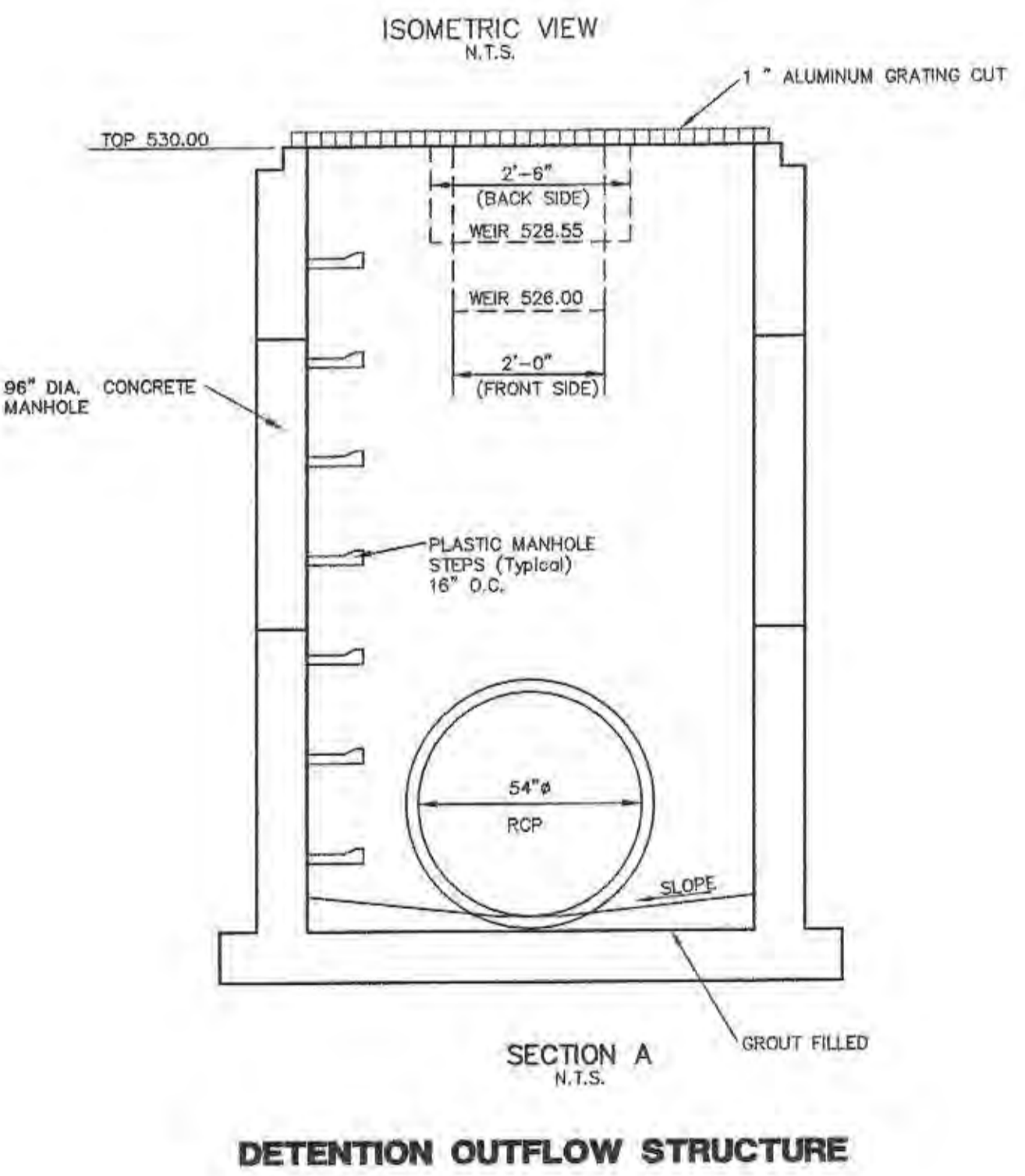
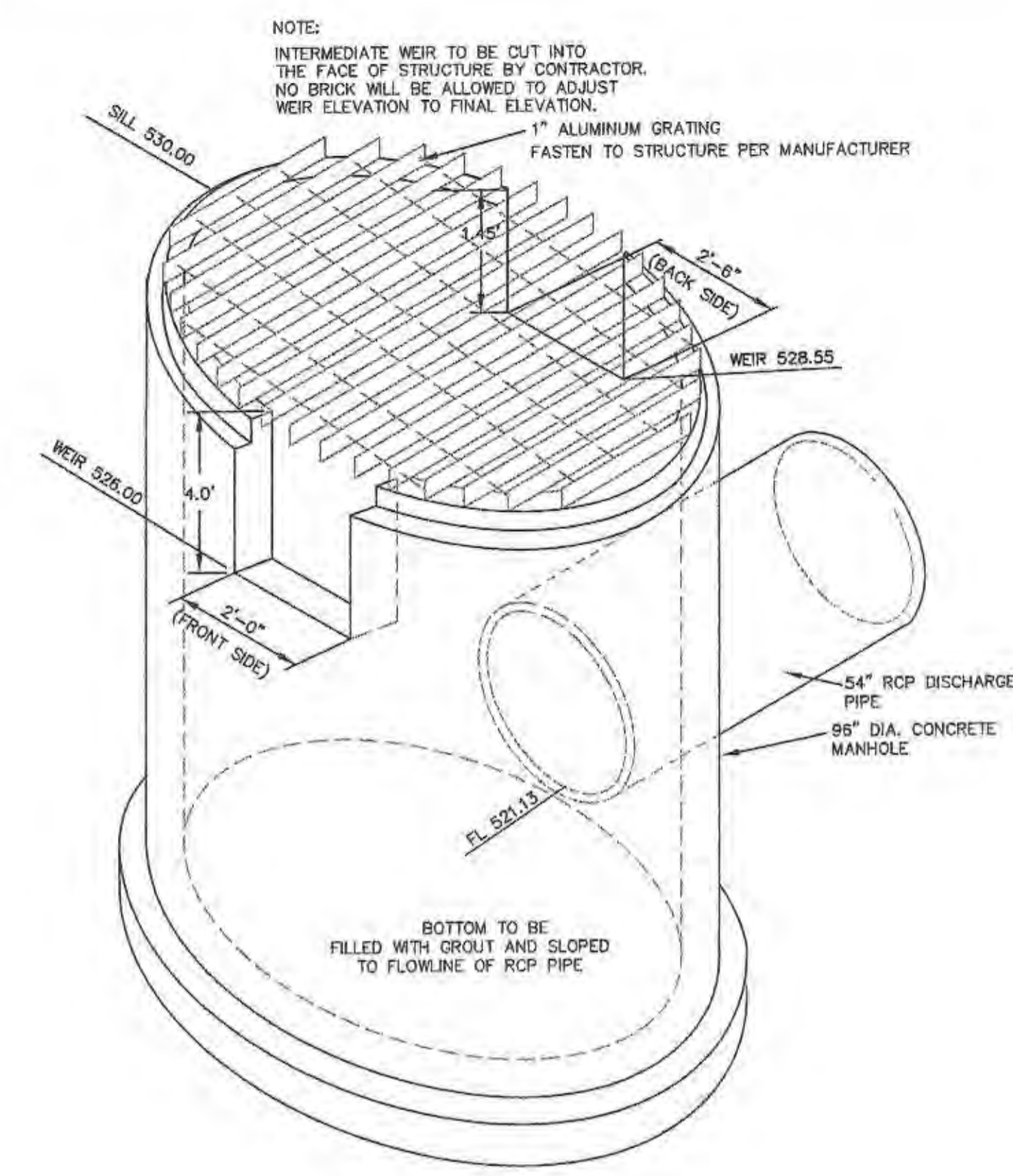


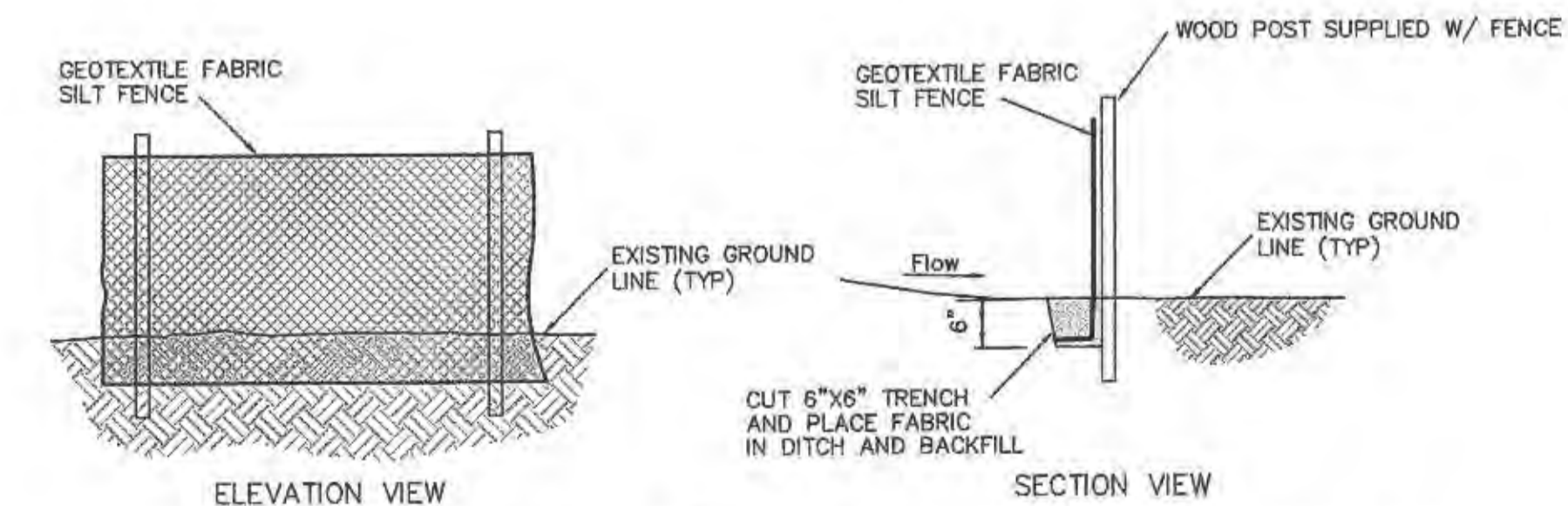
J. R. GRIMES CONSULTING ENGINEERS, INC.
 12300 OLD TESSON ROAD
 SUITE 3000
 ST. LOUIS, MO 63128
 PH. (314) 848-9100
 FAX (314) 848-6010



5 VERT.
 20 HORIZ.
 SCALE:



SILTATION CONTROL HAY BALE DETAIL



SILTATION CONTROL SILTFENCE DETAIL

NOTE: WHEN JOINING TWO OR MORE SILTFENCES TOGETHER TIE THE TWO END POSTS TOGETHER WITH EXISTING NYLON CORD.

REV. NO.	REMARKS	DATE
1	PER CITY OF O'FALLON COMMENTS	10/15/02
2	PER CITY OF O'FALLON COMMENTS	01/24/06

GRADING PERMIT DOCUMENTS FOR KELLEN-BECK DETENTION

SITE DETAILS

JOB NUMBER:	0675H
DRAWN BY:	JLW
DATE:	08/20/02
CHECKED BY:	LJM
DATE:	08/20/02
SHEET:	

C4

J:\0675H\C2-SITE.dwg, C4-DET, 1/26/2006 2:41:37 PM, jolmak

PREPARED FOR:
KELLEN-BECK PROPERTIES, LLC
 2681 MILLINEUM DR.
 SUITE 122
 O'FALLON, MO. 63366
 PH. (636) 561-0596
 FAX (636) 625-2679