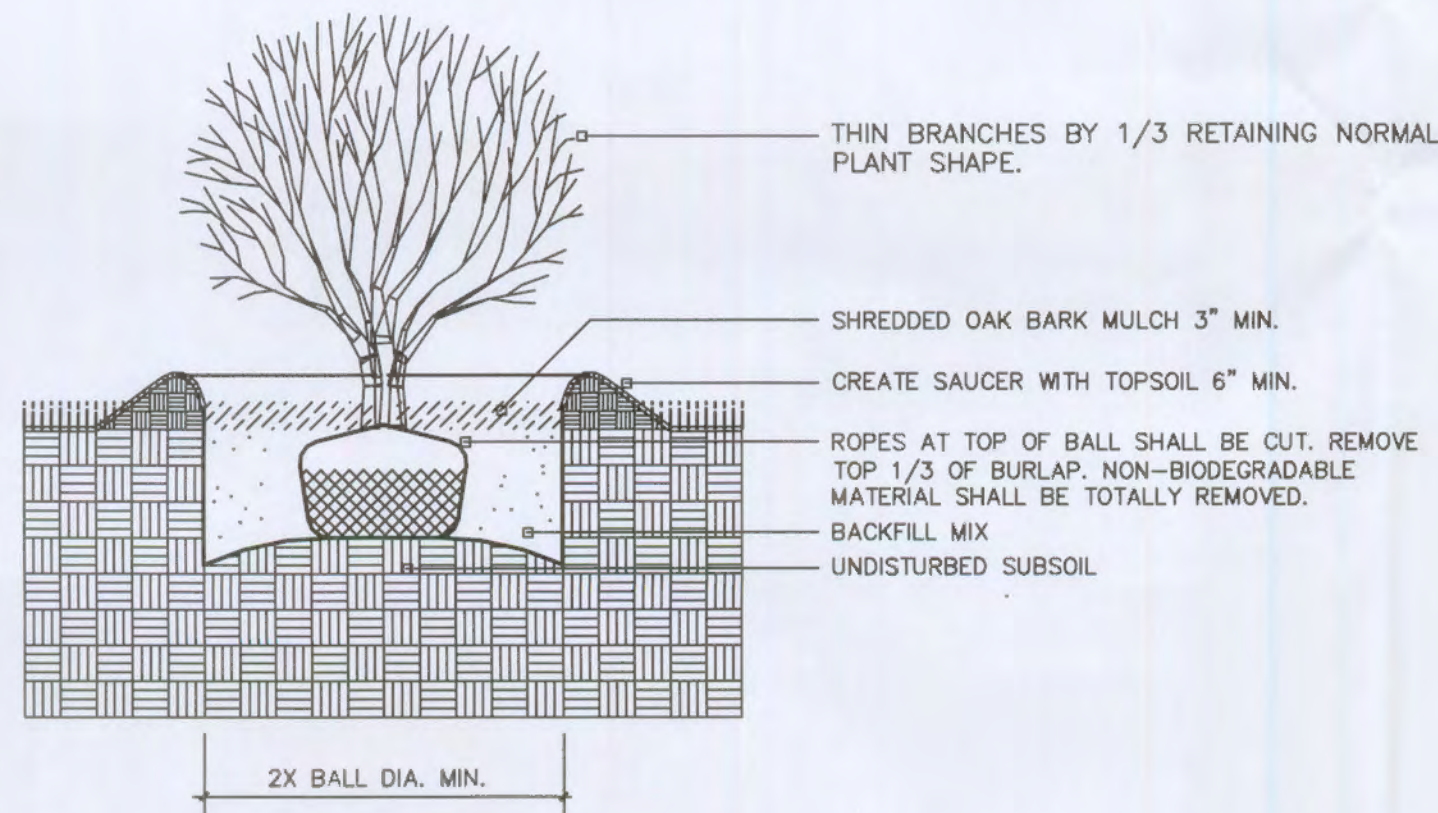
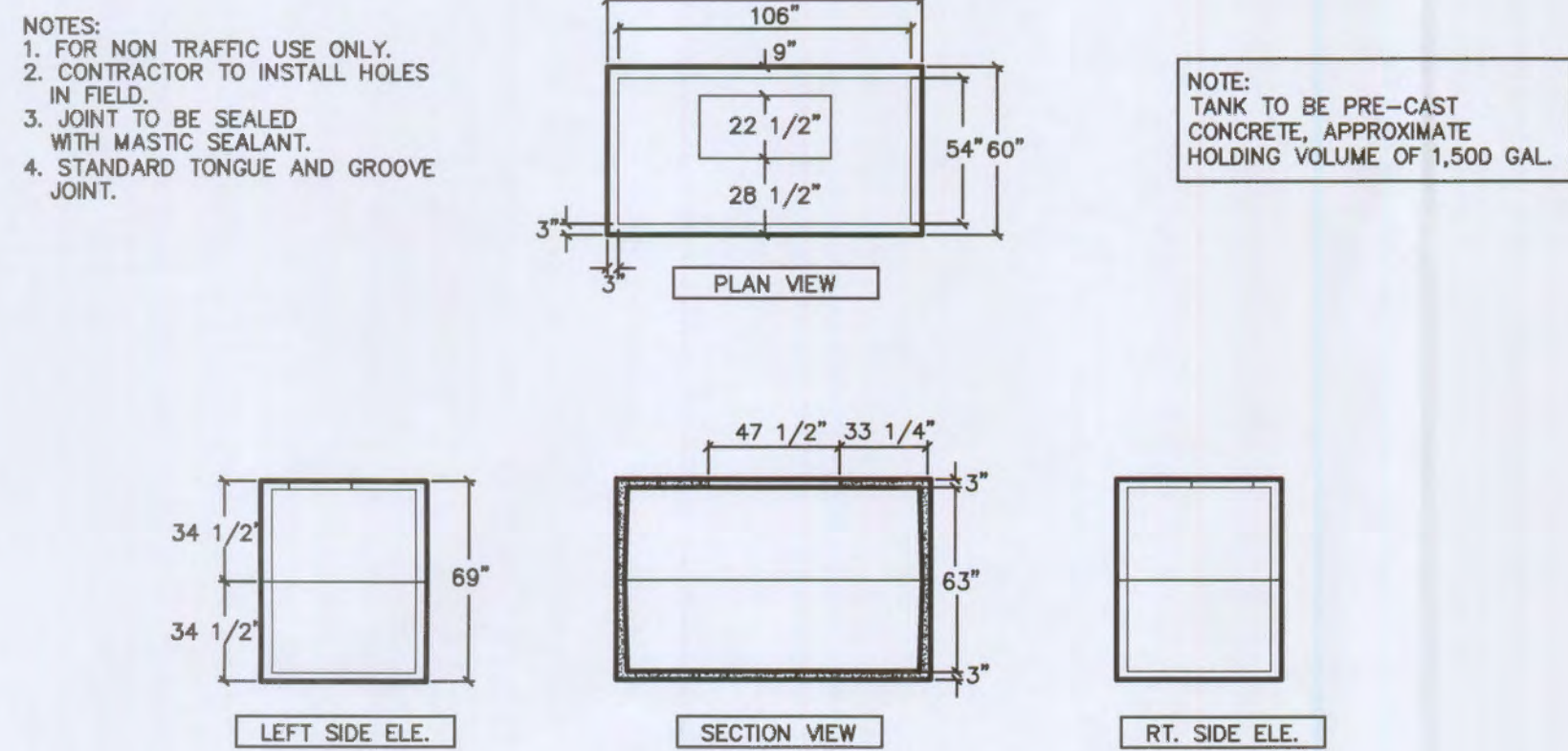


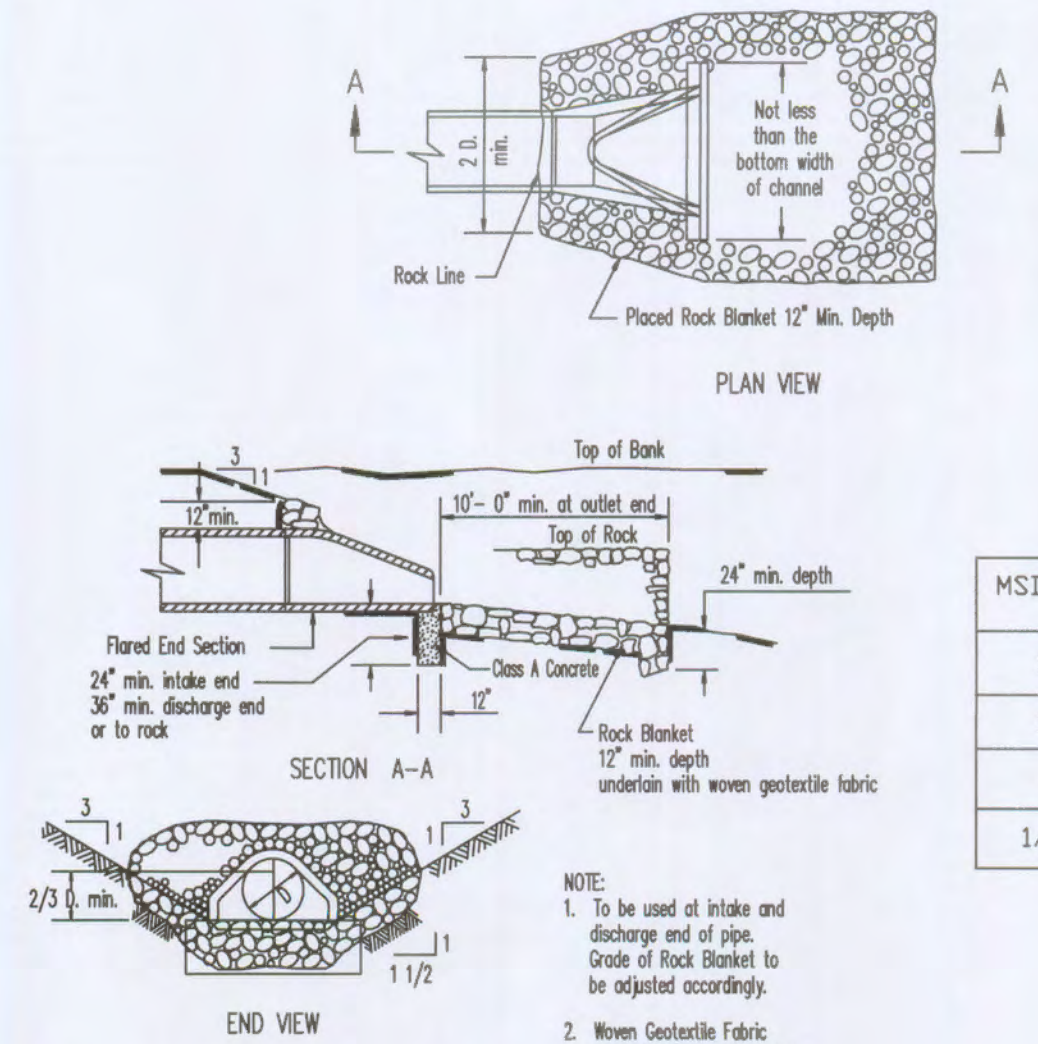
DECIDUOUS TREE PLANTING DETAIL
NO SCALE



SHRUB PLANTING DETAIL
NO SCALE



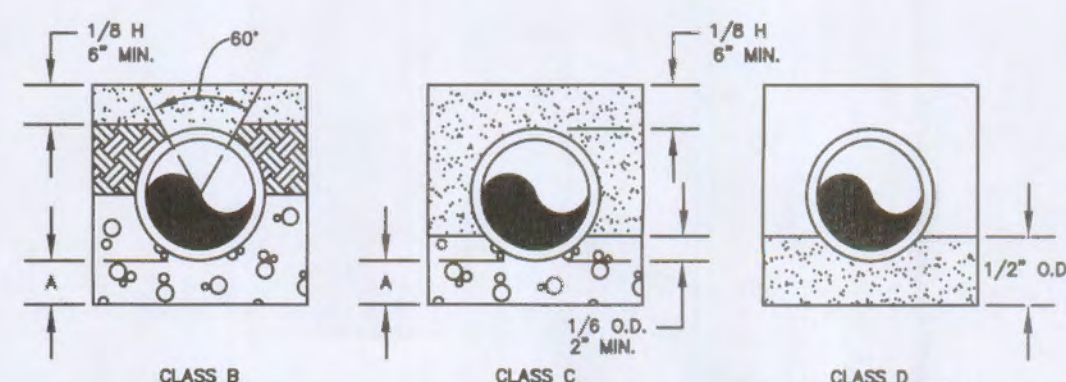
SANITARY HOLDING TANK DETAIL
NO SCALE



* The discharge point of all flared end sections shall be protected by rip rap or other approved means.
** Rip rap shown at flared end sections will be evaluated in the field by the Engineer, Contractor, and City Inspectors after installation for effectiveness and field modified, if necessary to reduce erosion on and off site.

CITY OF O'FALLON
ENGINEERING DEPARTMENT
O'FALLON, MISSOURI

SEWER CONSTRUCTION DETAILS
FLARED END SECTION
(INLET/OUTLET PROTECTION)



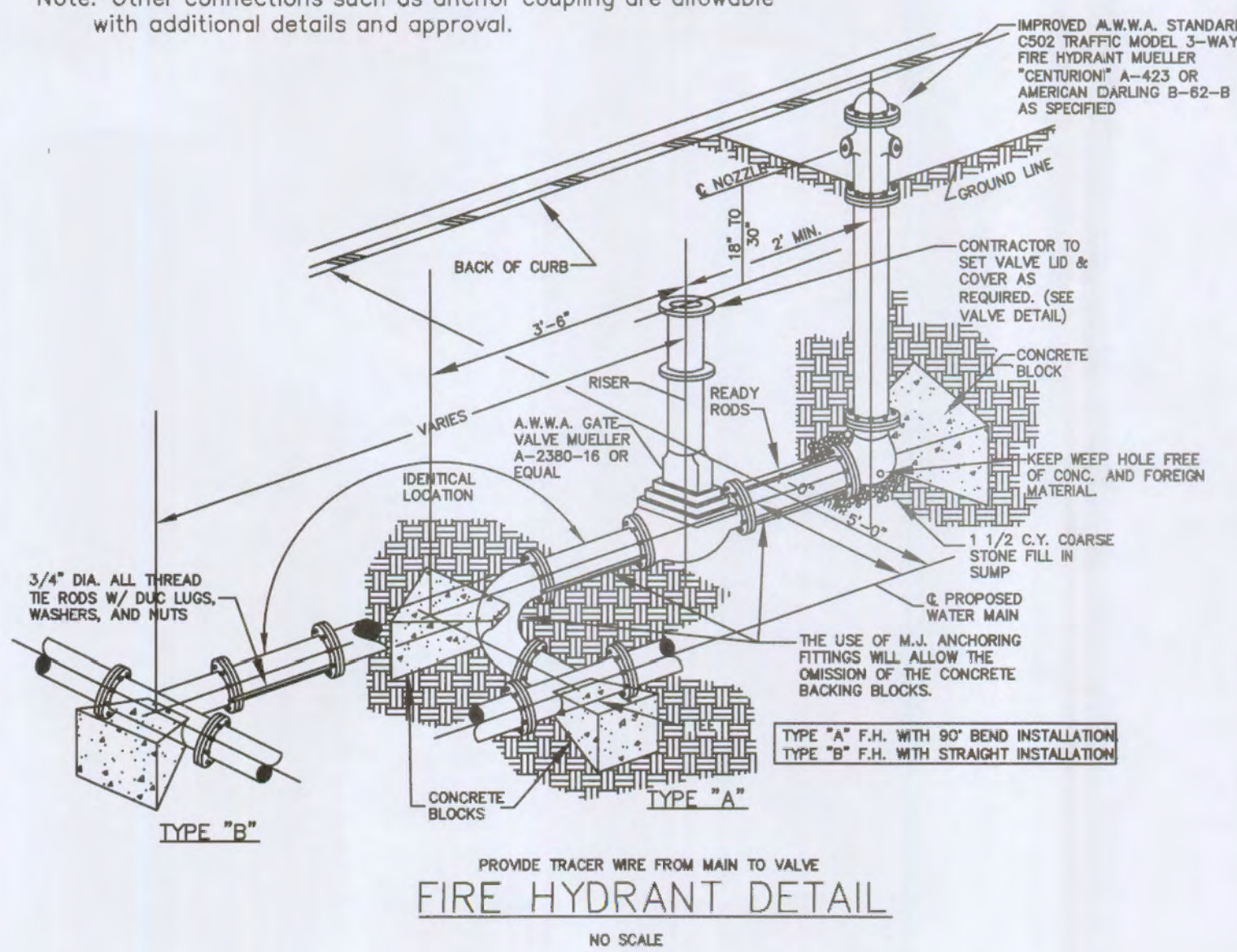
LEGEND:
I.D. - NOMINAL PIPE SIZE
O.D. - OUTSIDE DIAMETER OF PIPE
H - COVER ABOVE TOP OF PIPE
A - EMBEDDED BELOW PIPE (SEE TABLE)

TAMPED BACK FILL
COMPACTED BACK FILL
GRANULAR BEDDING

TABLE OF EMBEDDED DEPTHS BELOW PIPE			
I.D.	A	H	A
27" & SMALLER	3"	6"	6"

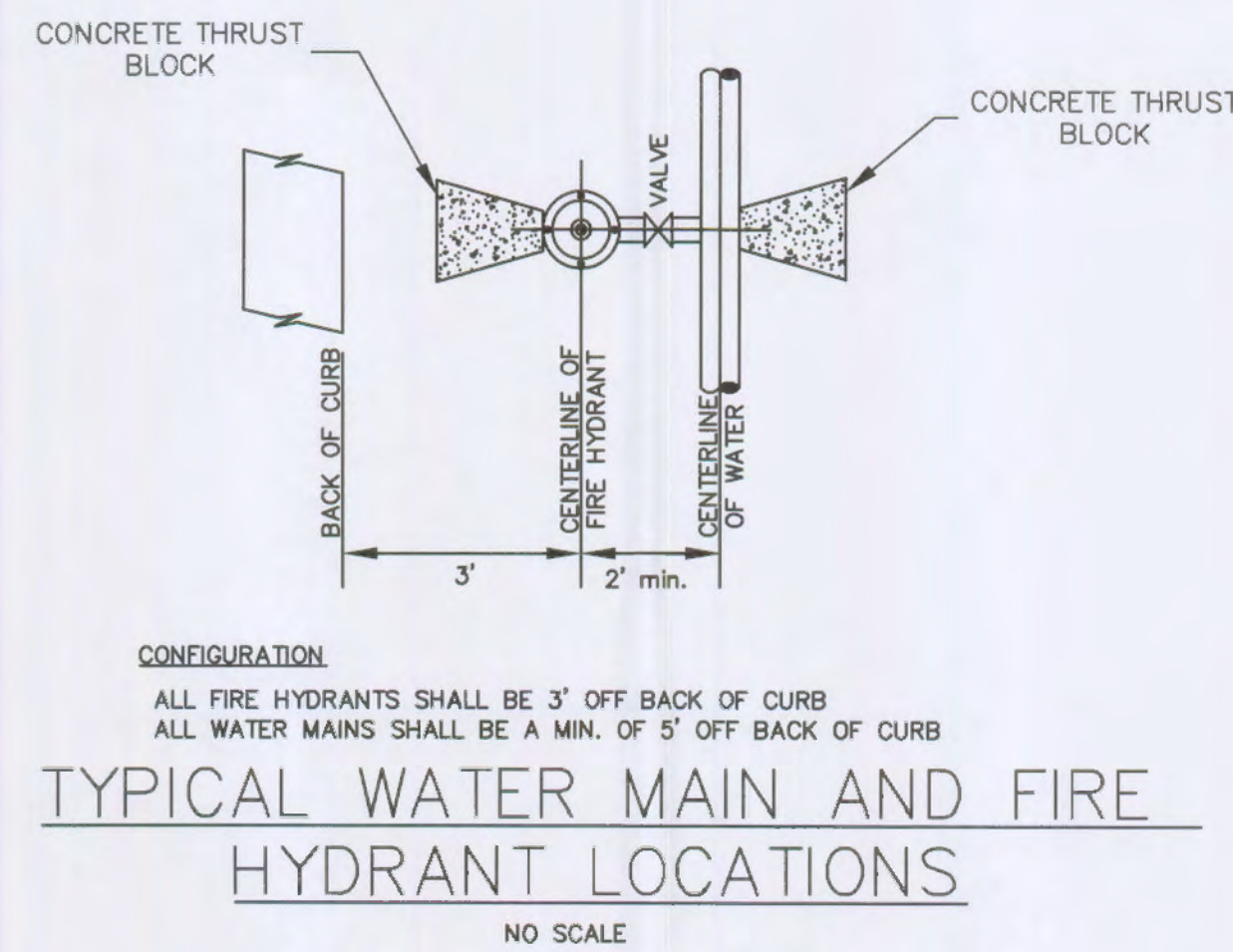
WATER MAIN EMBEDDED
NO SCALE

Note: Other connections such as anchor coupling are allowable with additional details and approval.



CITY OF O'FALLON
ENGINEERING DEPARTMENT
O'FALLON, MISSOURI

FIRE HYDRANT
DETAILS

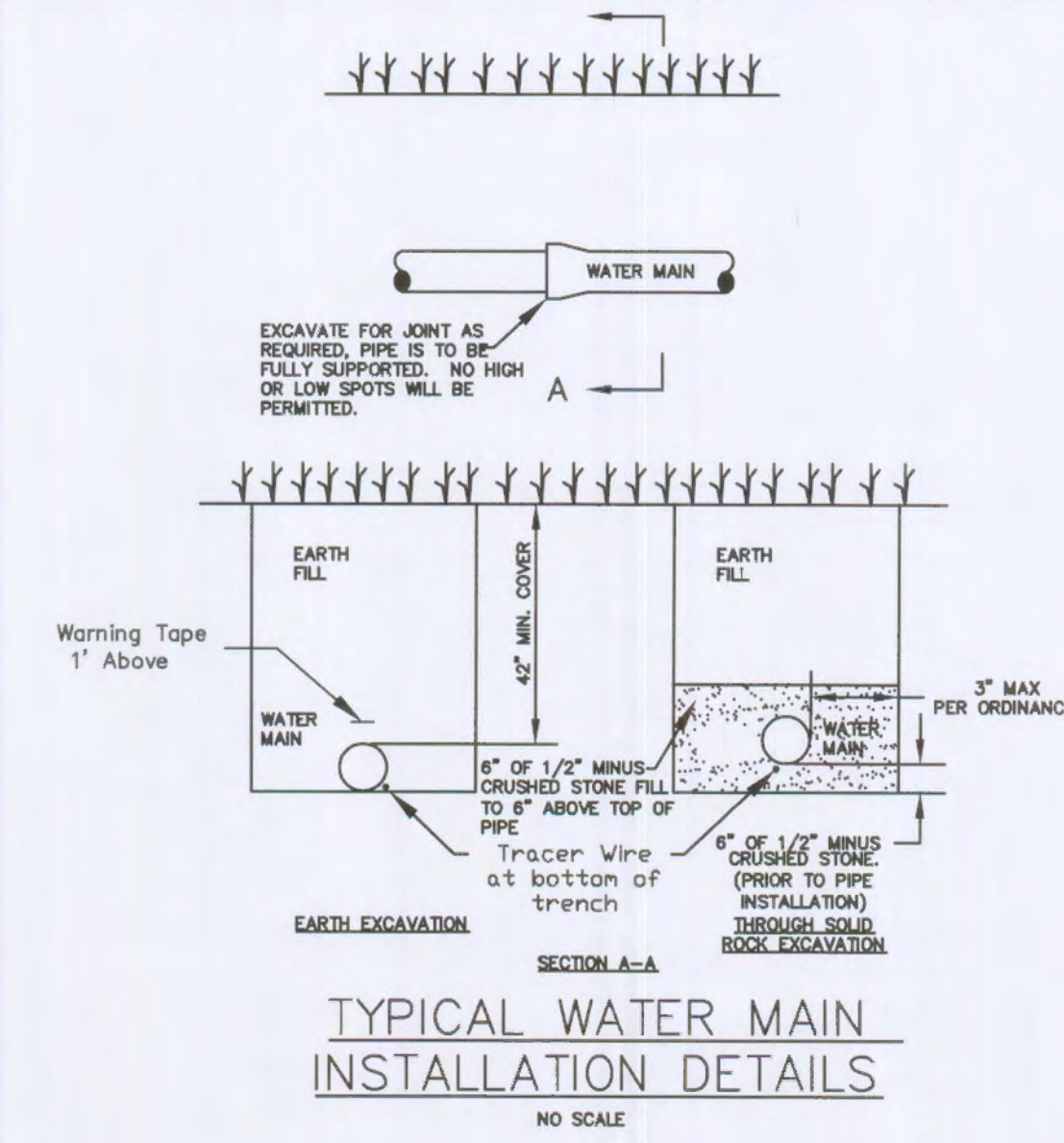


CONFIGURATION:
ALL FIRE HYDRANTS SHALL BE 3' OFF BACK OF CURB
ALL WATER MAINS SHALL BE A MIN. OF 5' OFF BACK OF CURB

TYPICAL WATER MAIN AND FIRE
HYDRANT LOCATIONS
NO SCALE

CITY OF O'FALLON
ENGINEERING DEPARTMENT
O'FALLON, MISSOURI

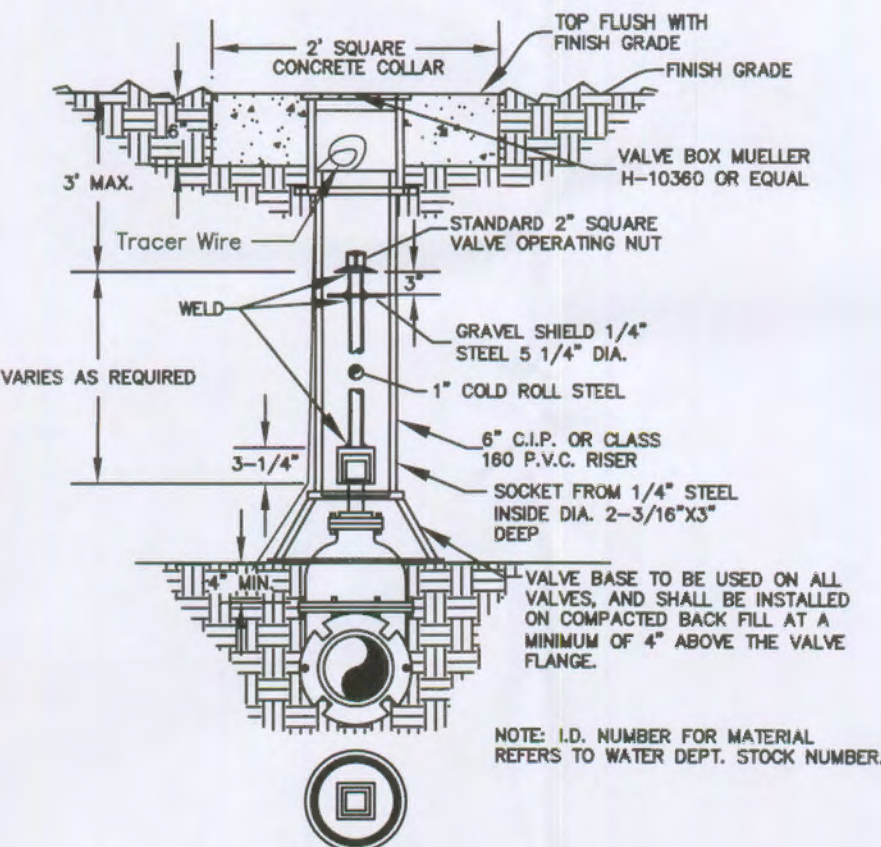
WATER MAIN
FIRE HYDRANT DETAIL



CITY OF O'FALLON
ENGINEERING DEPARTMENT
O'FALLON, MISSOURI

WATER MAIN
INSTALLATION DETAIL

Concrete collar will be in accordance with the Concrete collar detail.



WATER VALVE DETAIL
NO SCALE

CITY OF O'FALLON
ENGINEERING DEPARTMENT
O'FALLON, MISSOURI

WATER
VALVE DETAIL

Engineering Company's
Information



Kurtis J. Daniels No. E-28668
Registered Professional Engineer
State of Missouri
for Cochran Engineering & Surveying

Owner: Hero, LLC
Developer: Grace Hauling
1010 Hoff Road
O'Fallon, MO 63366
Phone: 636-398-8060

P+Z No.
Approval Date: 7/6/13
City No. 00-42.06

Page No.
C7

City of O'Fallon Standard Sheet

Lot 1 of Kemmar Court