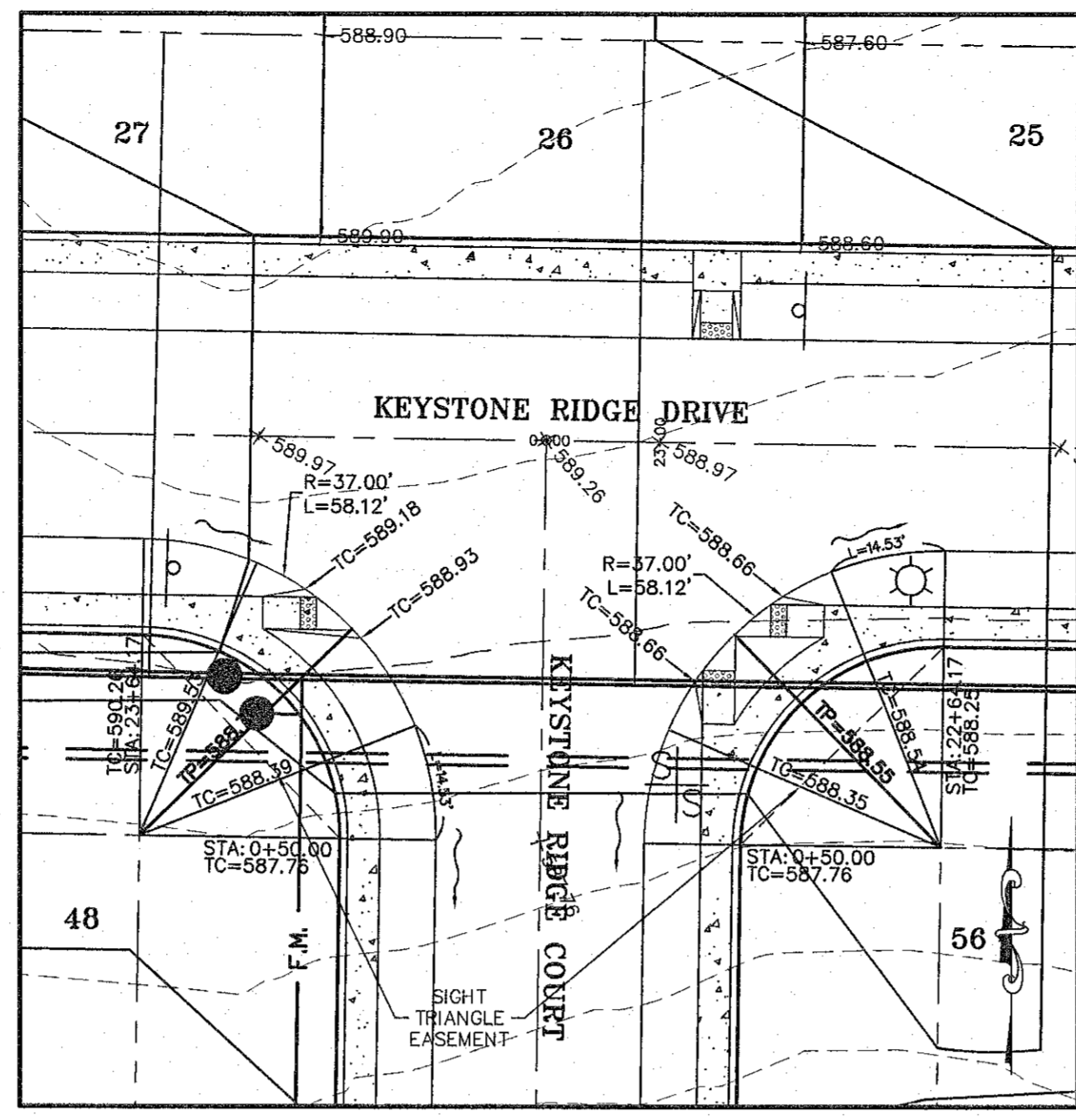
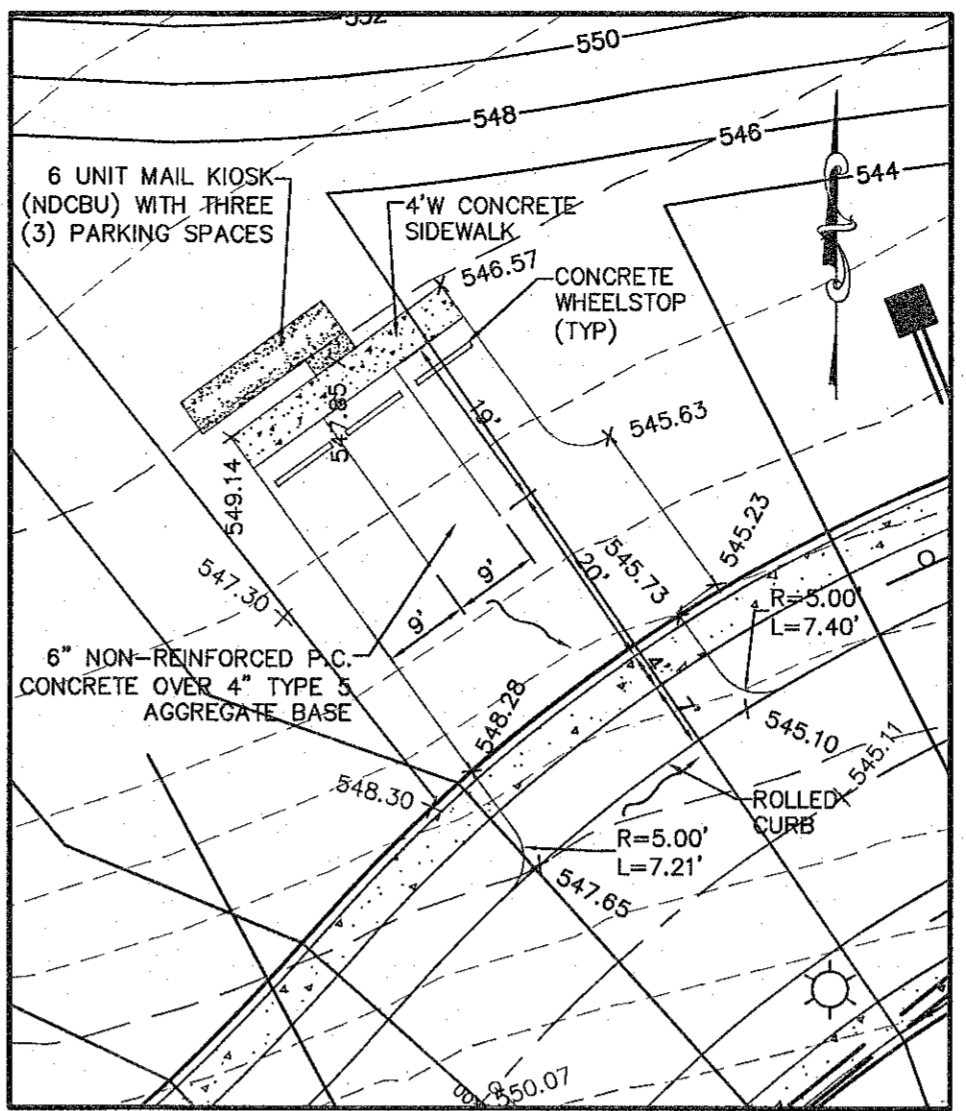


KEYSTONE RIDGE COURT
 SCALES:
 HORIZ. 1"=50'
 VERT. 1"=10'



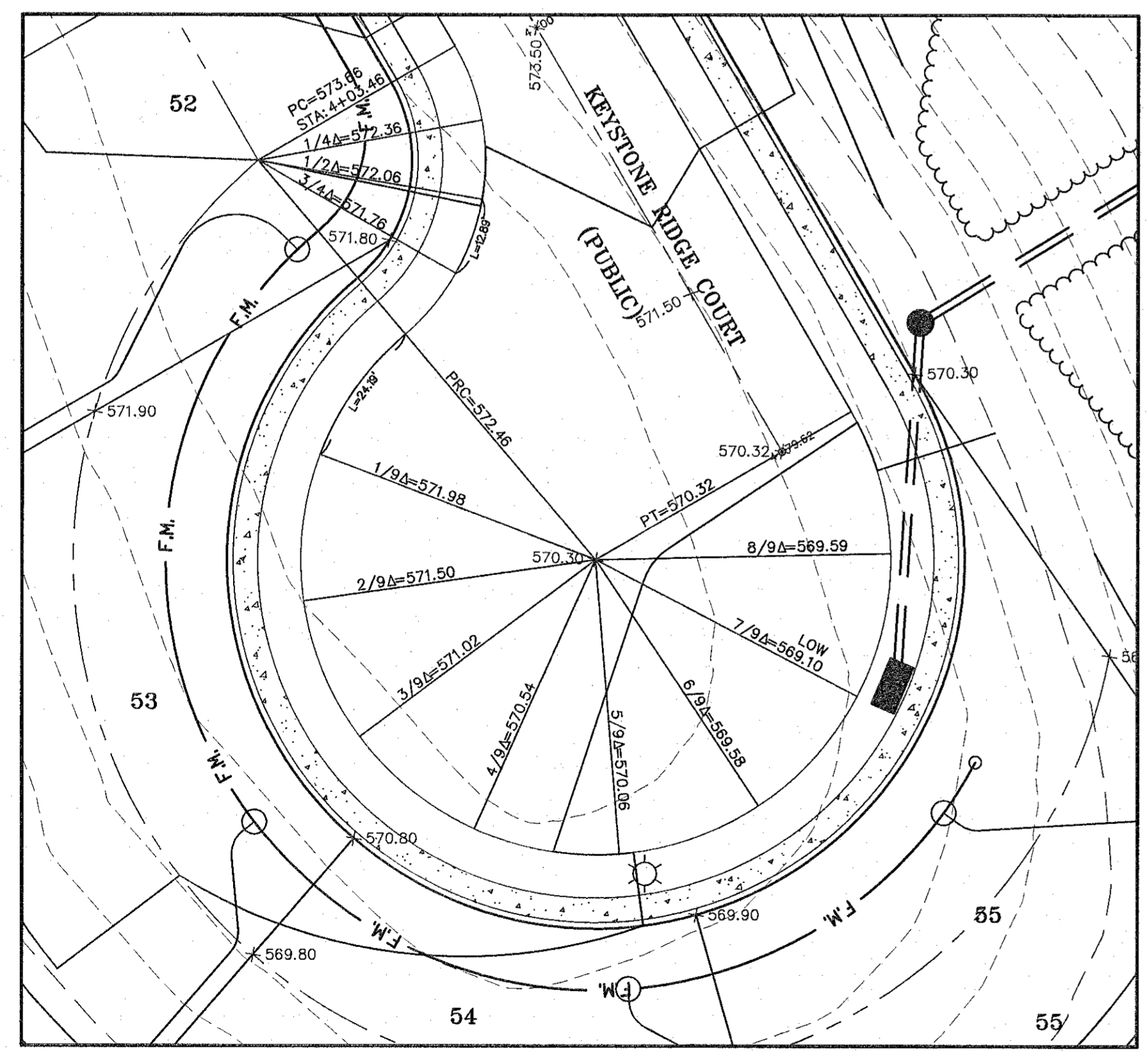
INTERSECTION DETAIL
 SCALE: 1" = 20'

NOTE:
 ALL ELEVATIONS ARE TO TOP OF CURB UNLESS OTHERWISE NOTED.
 TP=TOP OF PAVEMENT



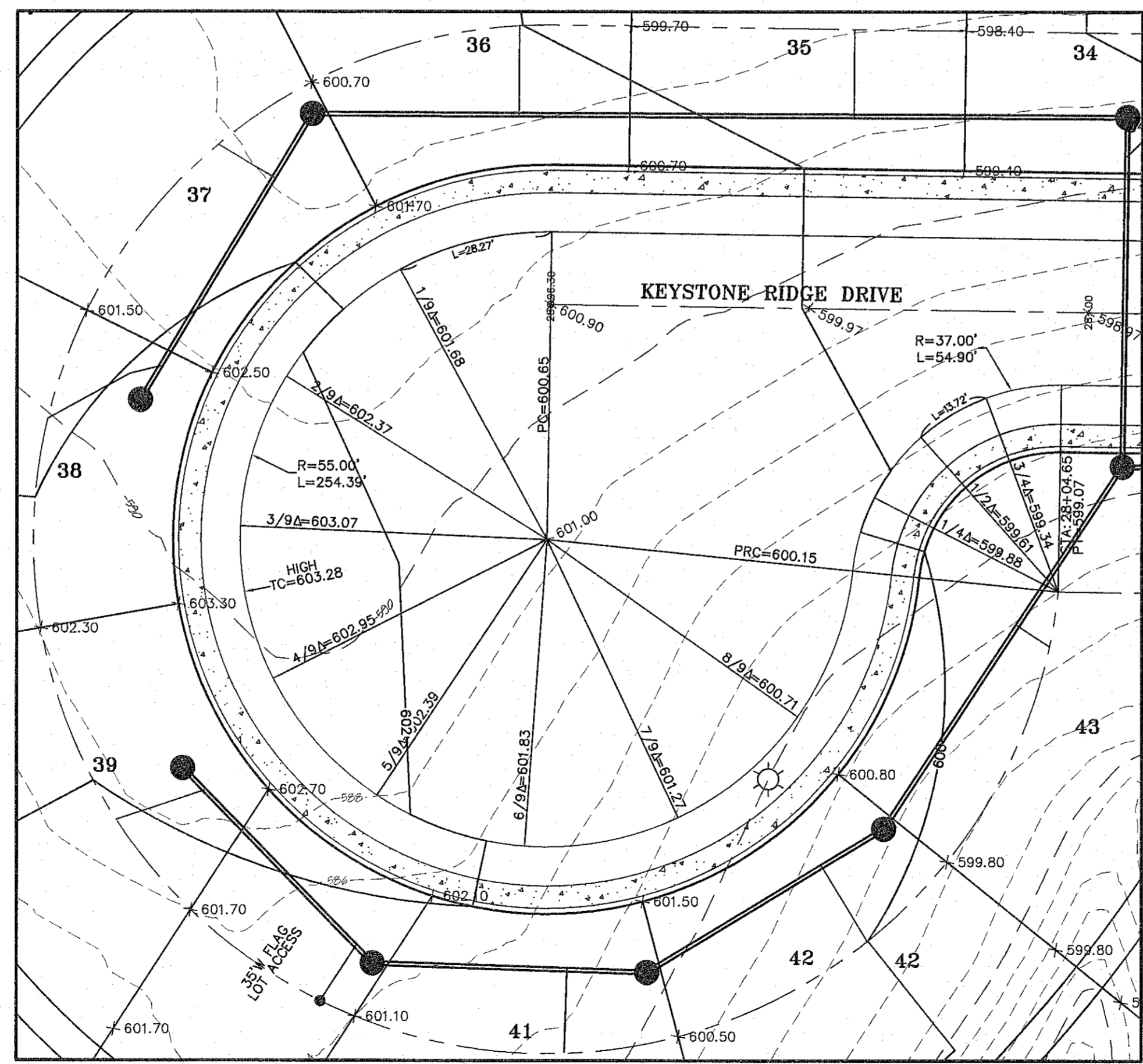
MAIL KIOSK/PARKING AREA DETAIL
 SCALE: 1" = 20'

NOTE:
 ALL ELEVATIONS ARE TO TOP OF PAVEMENT.



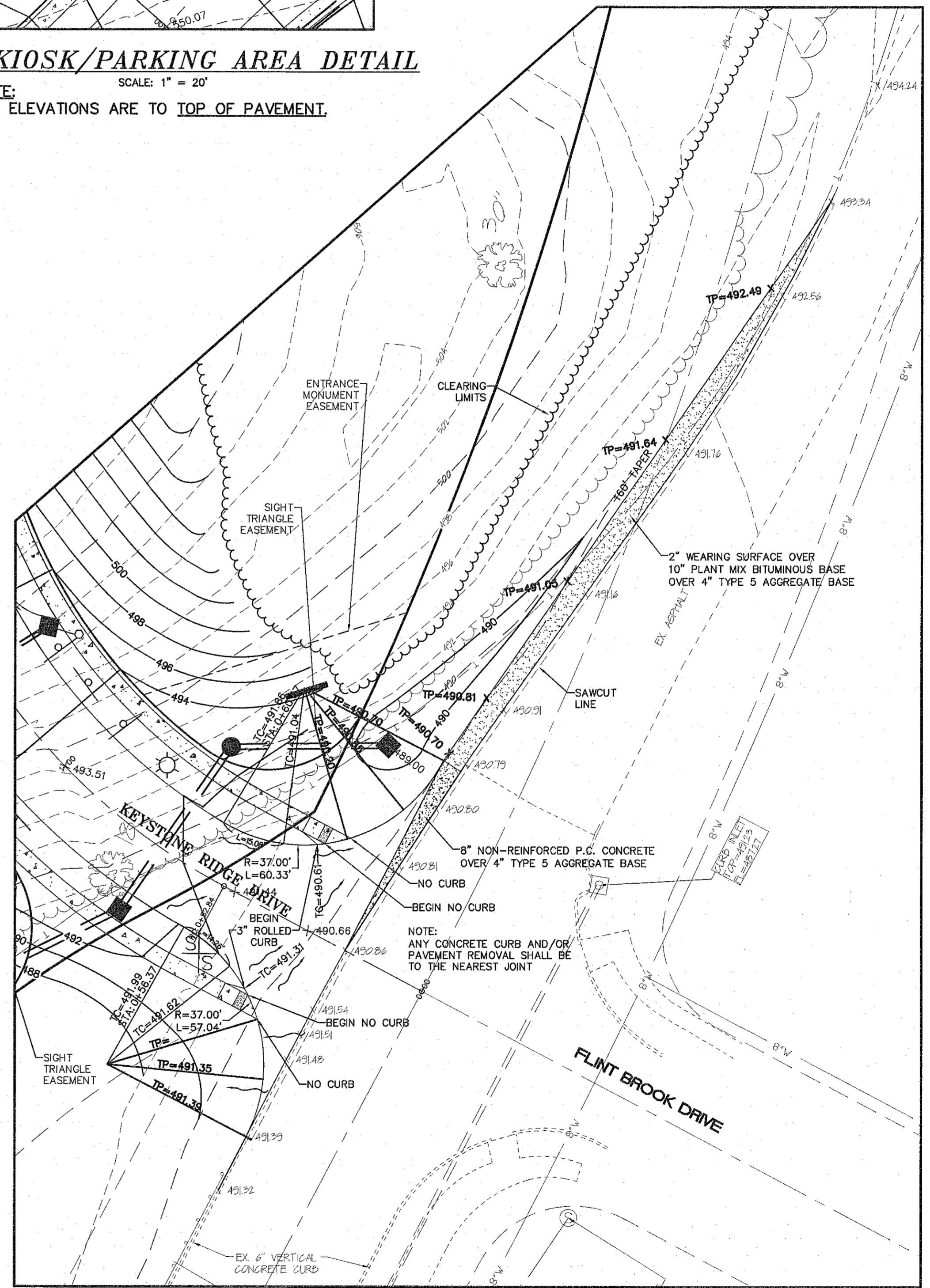
WARPING DETAIL
 SCALE: 1" = 20'

NOTE:
 ALL ELEVATIONS ARE TO TOP OF CURB UNLESS OTHERWISE NOTED.
 TP=TOP OF PAVEMENT



WARPING DETAIL
 SCALE: 1" = 20'

NOTE:
 ALL ELEVATIONS ARE TO TOP OF CURB UNLESS OTHERWISE NOTED.
 TP=TOP OF PAVEMENT



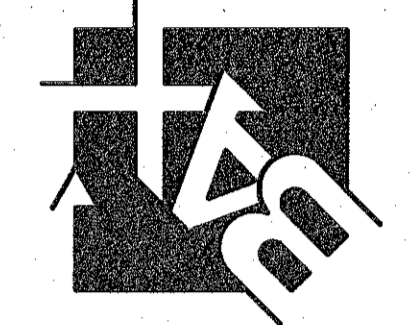
INTERSECTION AND ROAD WIDENING DETAIL
 SCALE: 1" = 20'

NOTE:
 ALL ELEVATIONS ARE TO TOP OF CURB UNLESS OTHERWISE NOTED.
 TP=TOP OF PAVEMENT

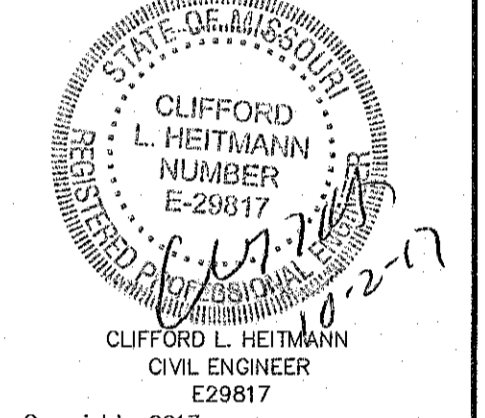
* (FOR GUTHRIE ROAD RESTRIPING PLAN SEE SHEET 21)

PROJECT TITLE:
KEYSTONE RIDGE

ENGINEERING SURVEYING
 241 Point West Blvd.
 St. Charles, MO 63301
 636-225-3552
 FAX 636-225-1718



DISCLAIMER OF RESPONSIBILITY
 I hereby specify that the documents intended to be submitted by my seal are limited to this sheet, and I hereby disclaim any responsibility for all other drawings, specifications, estimates, reports or other documents or instruments relating to or intended to be used for any part or parts of the architectural or engineering project or survey.



Copyright 2011
 Box Engineering Company, Inc.
 Authority No. 000655
 All Rights Reserved

REVISIONS

DATE	REVISION
05/01/17	CITY COMMENTS
07/20/17	CITY COMMENTS
08/07/17	CITY COMMENTS
08/21/17	CITY COMMENTS
08/31/17	CITY COMMENTS
10/02/17	CITY COMMENTS

Developer / Owner:
 KEYSTONE RIDGE LAND, LLC
 10328 LAKE BLUFF DRIVE
 ST. LOUIS, MO 63123
 314-892-3030 EXT. 121

P+Z No. #32-16
 City No. #

Page No. 13 of 33

STREET PROFILES