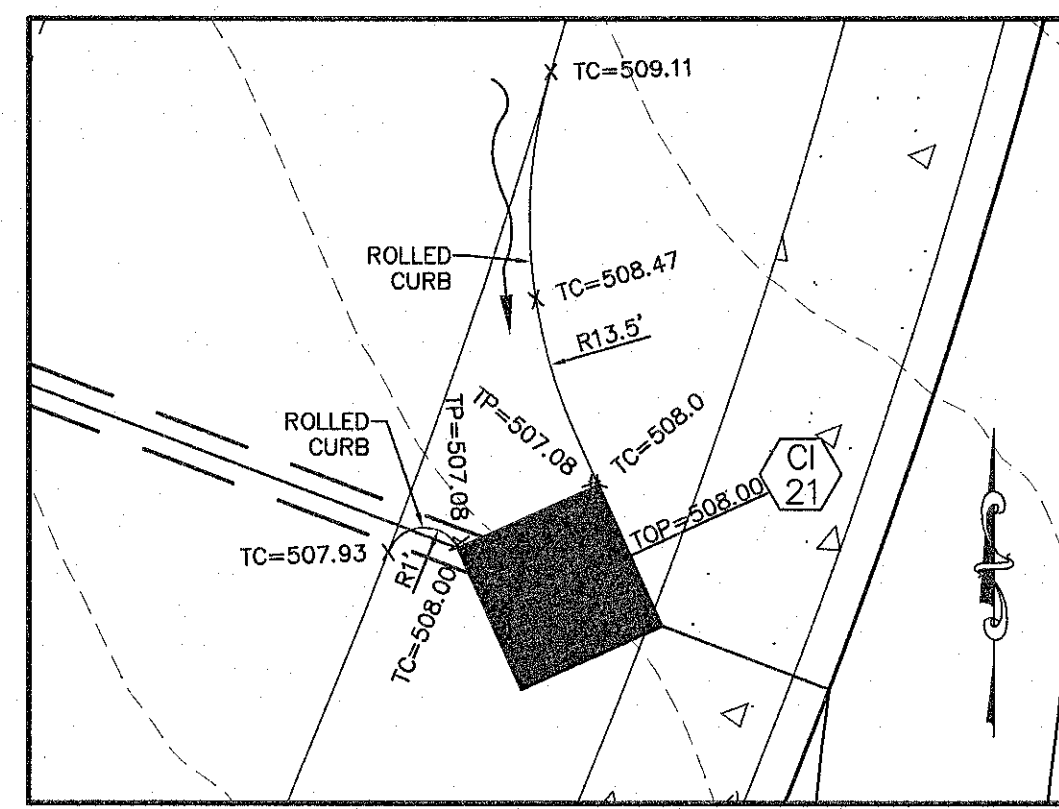
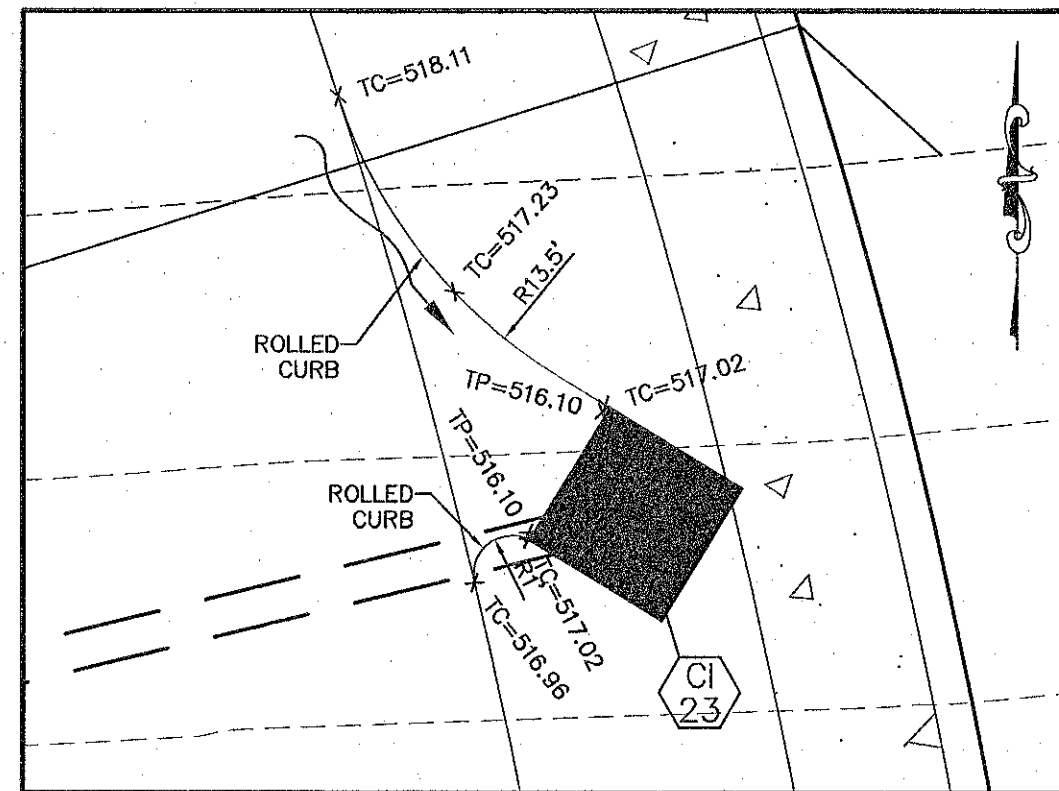


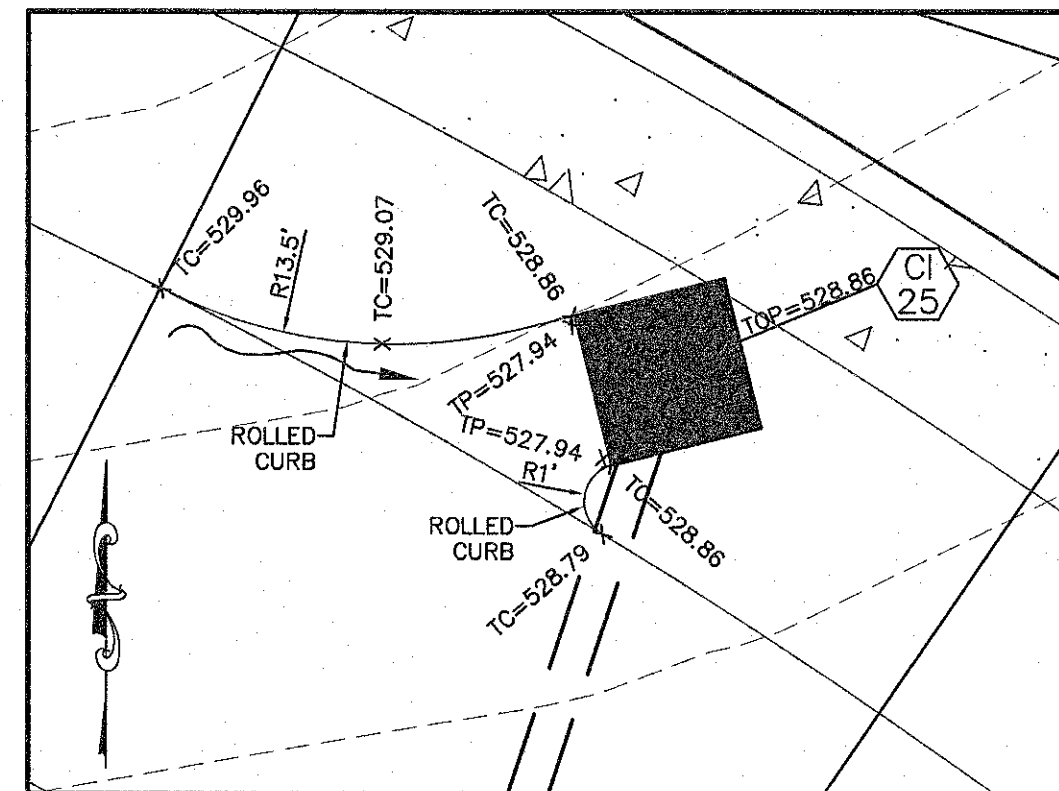
STRUCTURE DETAIL (CI 20)
 STA:1+30.05 / TOP=495.10
 SCALE: 1" = 5'



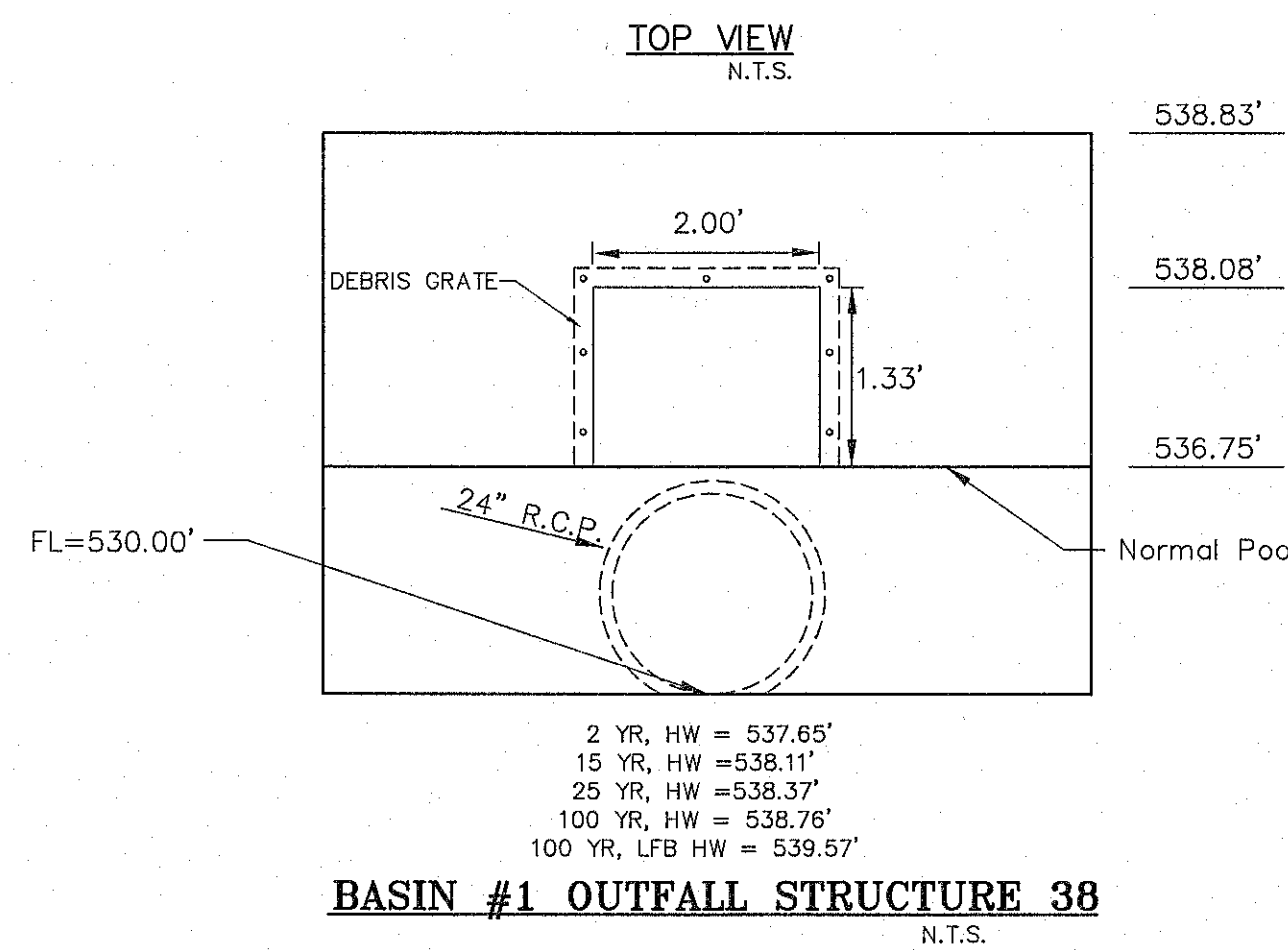
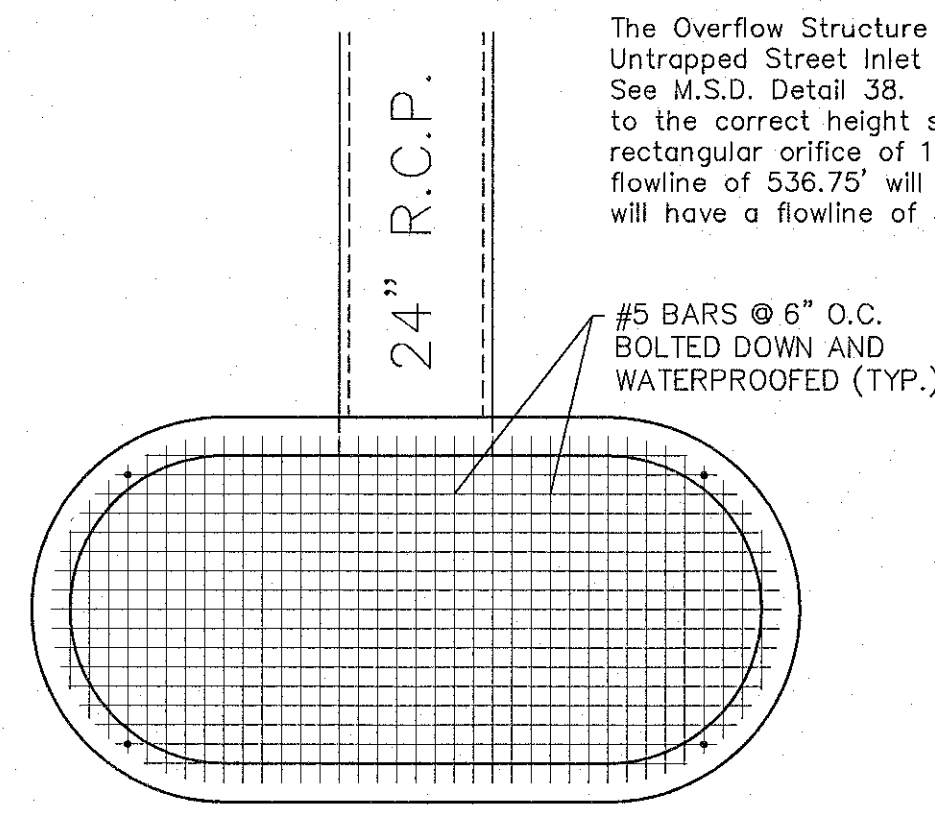
STRUCTURE DETAIL (CI 21)
 STA:2+78.93 / TOP=508.00
 SCALE: 1" = 5'



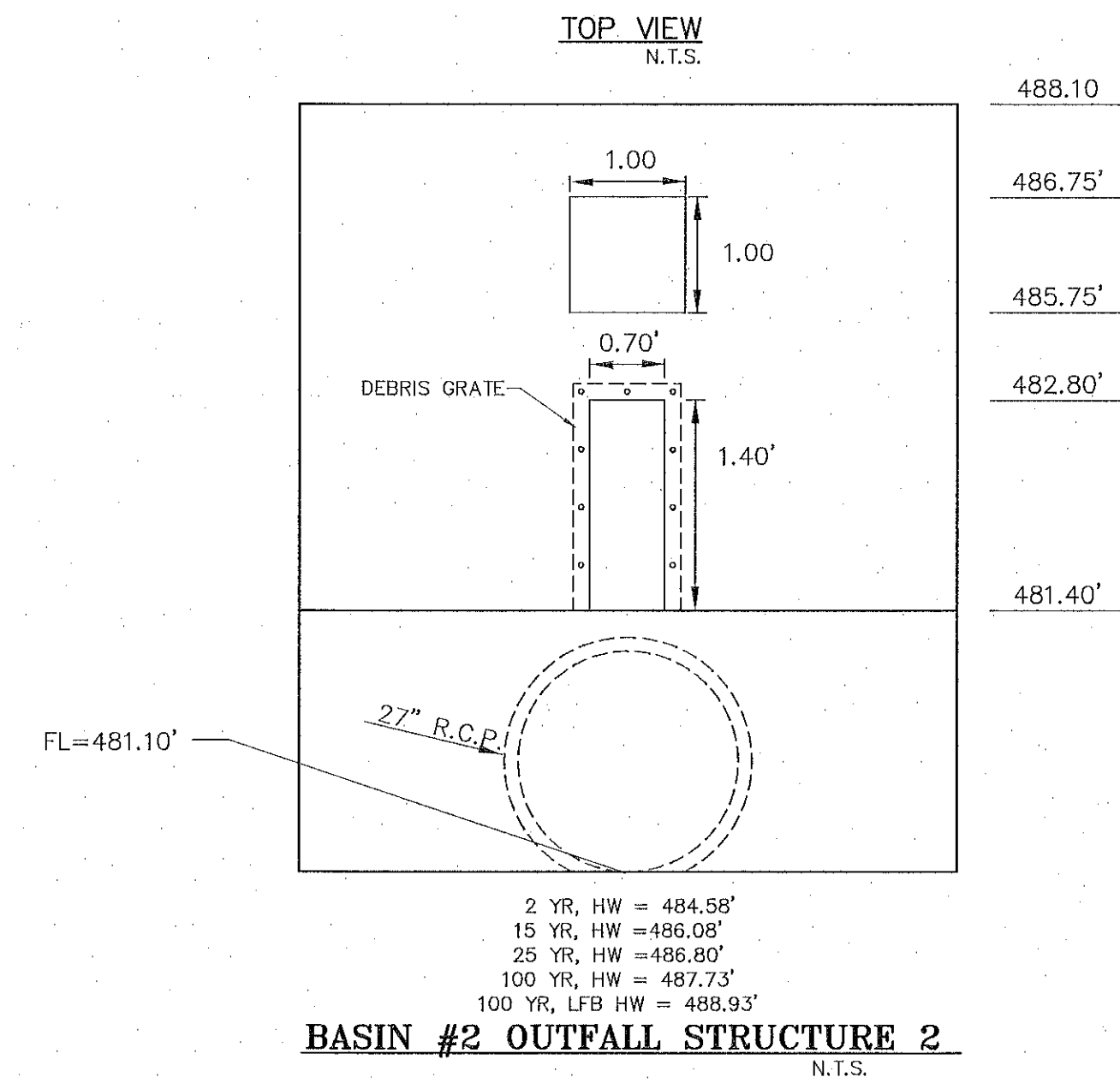
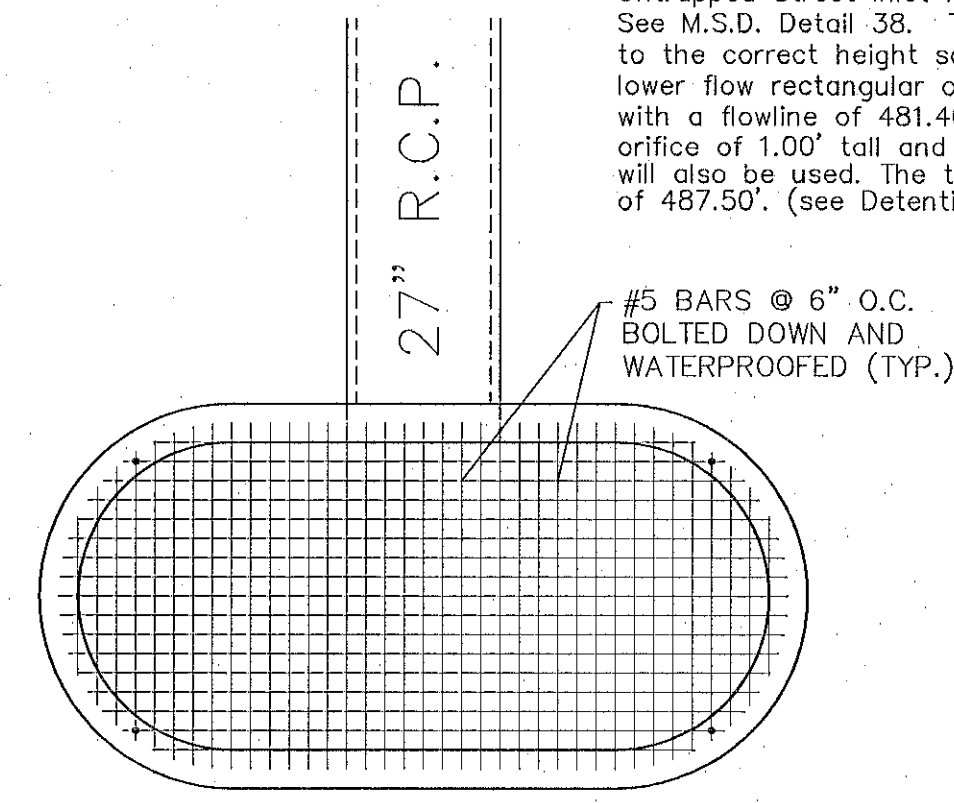
STRUCTURE DETAIL (CI 23)
 STA:3+69.16 / TOP=517.02
 SCALE: 1" = 5'



STRUCTURE DETAIL (CI 25)
 STA:4+87.50 / TOP=528.86
 SCALE: 1" = 5'

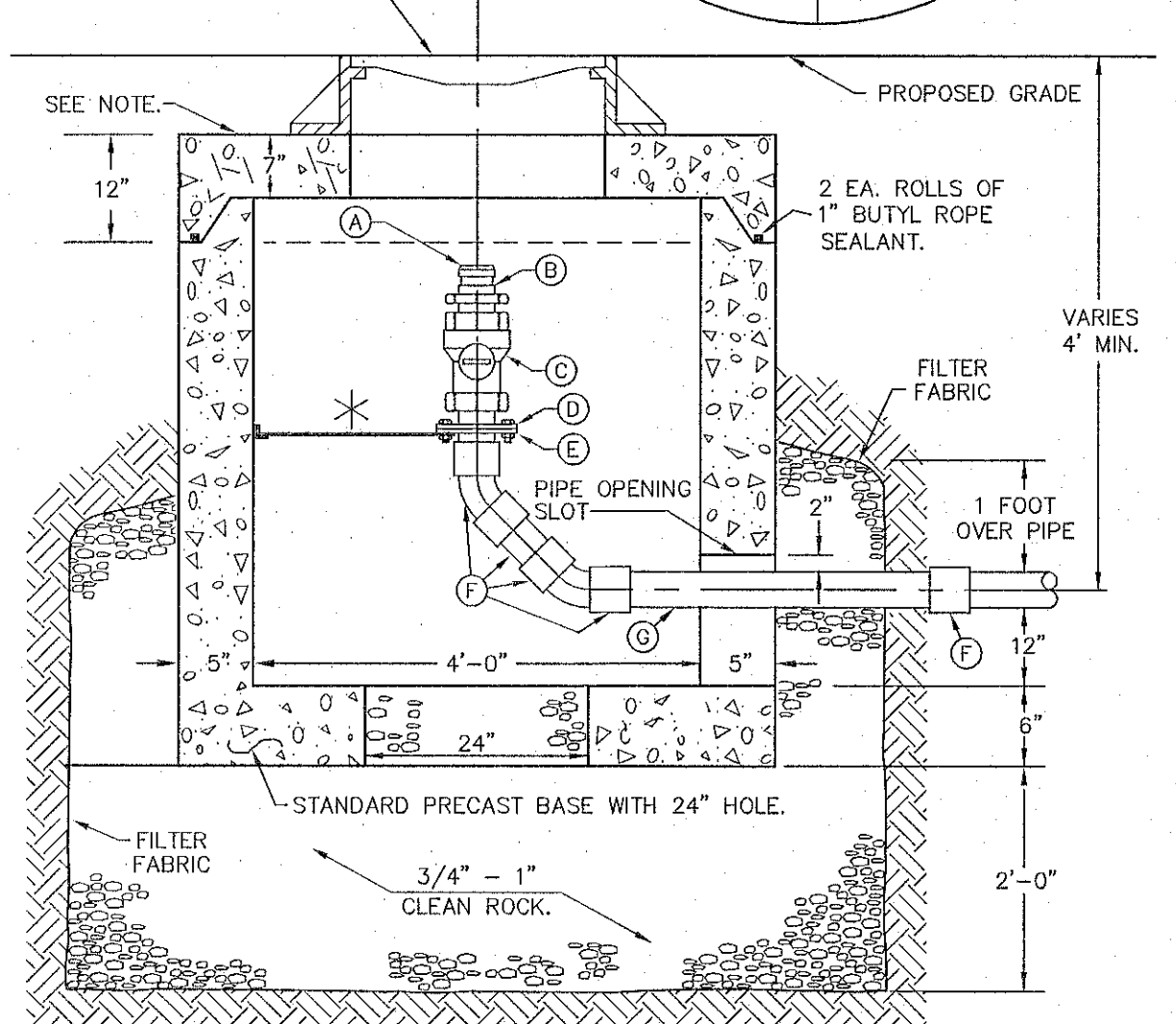


The Overflow Structure is to be a Standard Double Untrapped Street Inlet Precast Concrete (without top). See M.S.D. Detail 38. The bottom must be constructed to the correct height so that no brick will be used. A rectangular orifice of 1.33' tall and 2.00' wide, with a flowline of 536.75' will be used. The top of the structure will have a flowline of 538.83'. (See Detention Calculations)

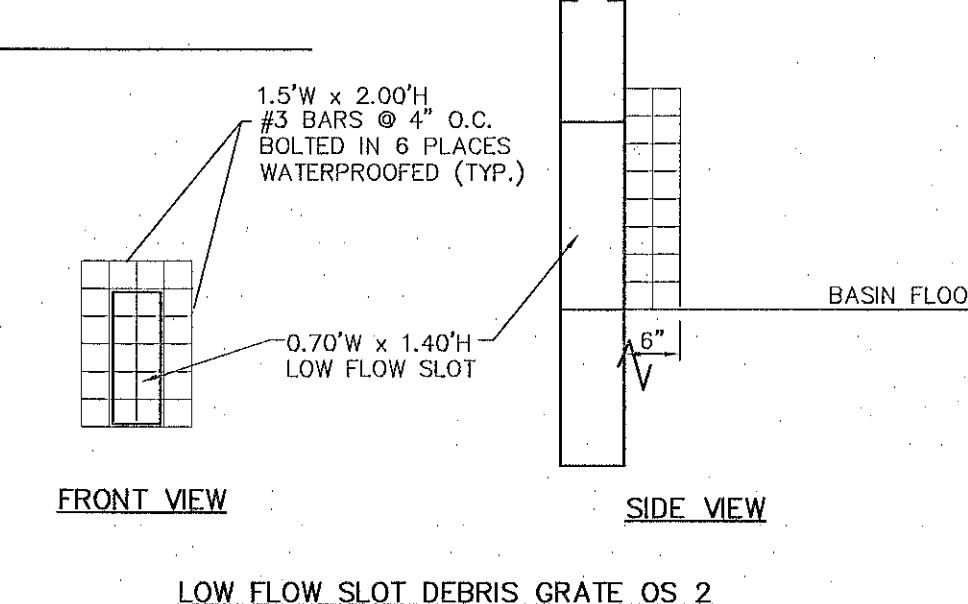
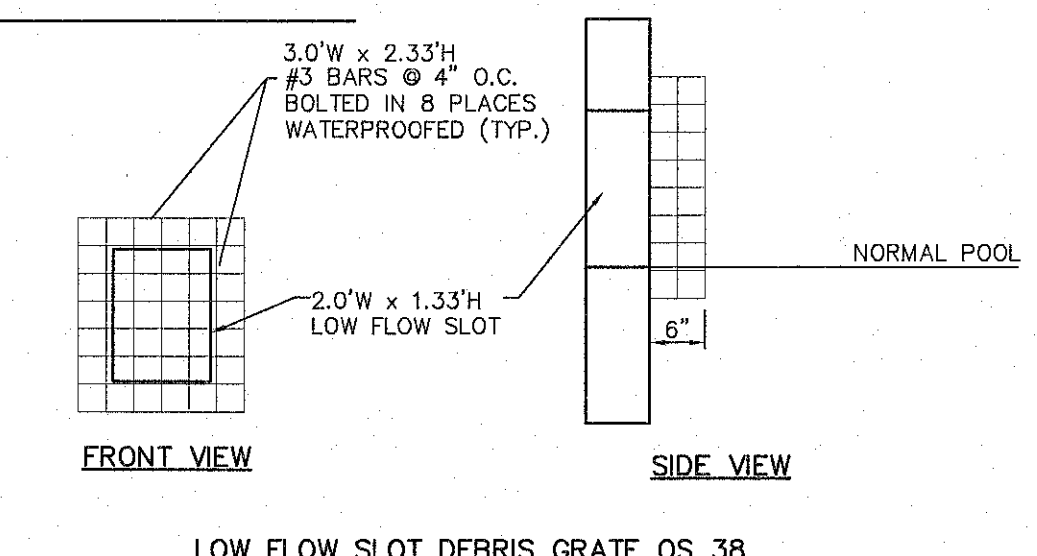


The Overflow Structure is to be a Standard Double Untrapped Street Inlet Precast Concrete (without top). See M.S.D. Detail 38. The bottom must be constructed to the correct height so that no brick will be used. A lower flow rectangular orifice of 1.40' tall and 0.70' wide, with a flowline of 481.40 will be used. The upper rectangular orifice of 1.00' tall and 1.00' wide, with a flowline of 485.75' will also be used. The top of the structure will have a flowline of 487.50'. (see Detention Calculations)

- A. 2" LOCKDOWN QUICK COUPLING CAP
 - B. 2" QUICK COUPLING
 - C. 2" CURB STOP BALL VALVE
 - D. 2" BRASS FULL FACED FLANGE
 - E. 2" SOCKET FLANGE SCHEDULE 80 P.V.C.
 - F. 2" SCHEDULE 80 P.V.C. FITTINGS
 - G. 2" SCHEDULE 80 P.V.C. PIPE
- * 1 1/2" x 1 1/2" x 3/8" S.S. ANGLE BRACE
- NOTE: ALL TOPS MUST BE REINFORCED (SUBMIT DESIGN FOR ALL STRUCTURE TOPS SUBJECT TO VEHICLE LOADING).



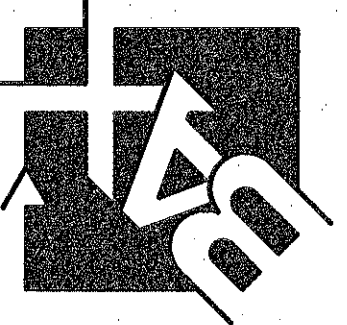
EMERGENCY TRUCK CONNECTION DETAIL	METROPOLITAN ST. LOUIS SEWER DISTRICT Standard Details of Sewer Construction	Dr. D.H.R. Ch. S.D.K.	2009	FIGURE 6
-----------------------------------	---	--------------------------	------	----------



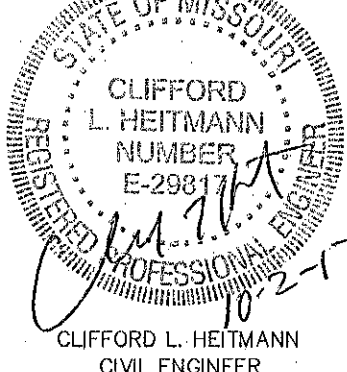
PROJECT TITLE:

**KEYSTONE
 RIDGE**

ENGINEERING
 PLANNING
 SURVEYING
 221 Point West Blvd.
 St. Charles, MO 63801
 636-928-5652
 FAX 636-928-1718



DISCLAIMER OF RESPONSIBILITY
 I hereby specify that the documents intended to be authorized by my seal are limited to this sheet, and I hereby disclaim any responsibility for all other Drawings, Specifications, Estimates, Reports or other documents or instruments relating to or intended to be used for any part or parts of the architectural or engineering project or projects.



Copyright 2017
 Box Engineering Company, Inc.
 Authority No. 000655
 All Rights Reserved

REVISIONS	
05/01/17	CITY COMMENTS
07/20/17	CITY COMMENTS
08/07/17	CITY COMMENTS
08/21/17	CITY COMMENTS
08/31/17	CITY COMMENTS
10/02/17	CITY COMMENTS

Developer / Owner:
 KEYSTONE RIDGE LAND, LLC
 10328 LAKE BLUFF DRIVE
 ST. LOUIS, MO 63123
 314-892-3030 EXT. 121

SANITARY/STORM SEWER DETAILS

P+Z No. #32-16

City No. #

Page No.

33 of 33