



LOTS 2 & 3 OF LAKESIDE SHOPPES
4088 WINGHAVEN BLVD.
CITY OF FALLON
STATE OF MISSOURI

STOCK & ASSOCIATES
Consulting Engineers, Inc.
257 Chesterfield Business Parkway
St. Louis, MO 63105 PH: (636) 530-9100 FAX: (636) 530-9130
e-mail: genier@stockassn.com
Web: www.stockassn.com



GEORGE M. STOCK E-25116
CIVIL ENGINEER
CERTIFICATE OF AUTHORITY
NUMBER: 000996

Developer / Owner (Under Contract)
Chesterfield Childcare Properties, LLC
23 Bopp Lane
St. Louis, Mo 63131

Facility Operator
Concord Properties, LLC
23 Bopp Lane
St. Louis, Mo 63131

OVERALL UTILITY AND PAVING PLAN

DRAWN BY: A.C.D. CHECKED BY: G.M.S.
DATE: 01/15/13 JOB NO.: 212-5043

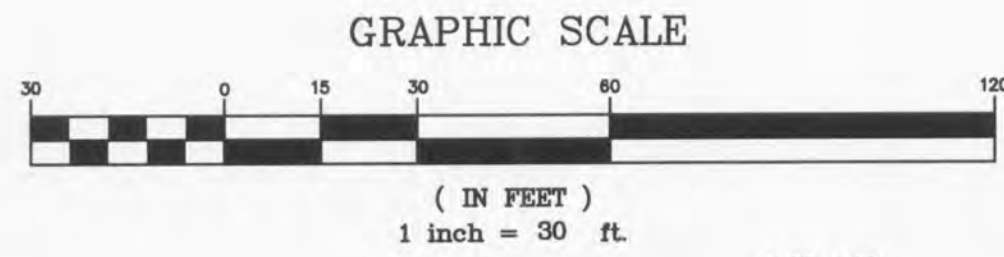
REVISIONS:

1	02/05/13	- CITY WATER REVISIONS
2	03/12/13	- CITY REVISIONS
3	03/26/13	- CITY REQUIRED SETS

P+Z No. 98314104
(APPROVED JANUARY 4, 2013)
City No.

Page No.
C4.0

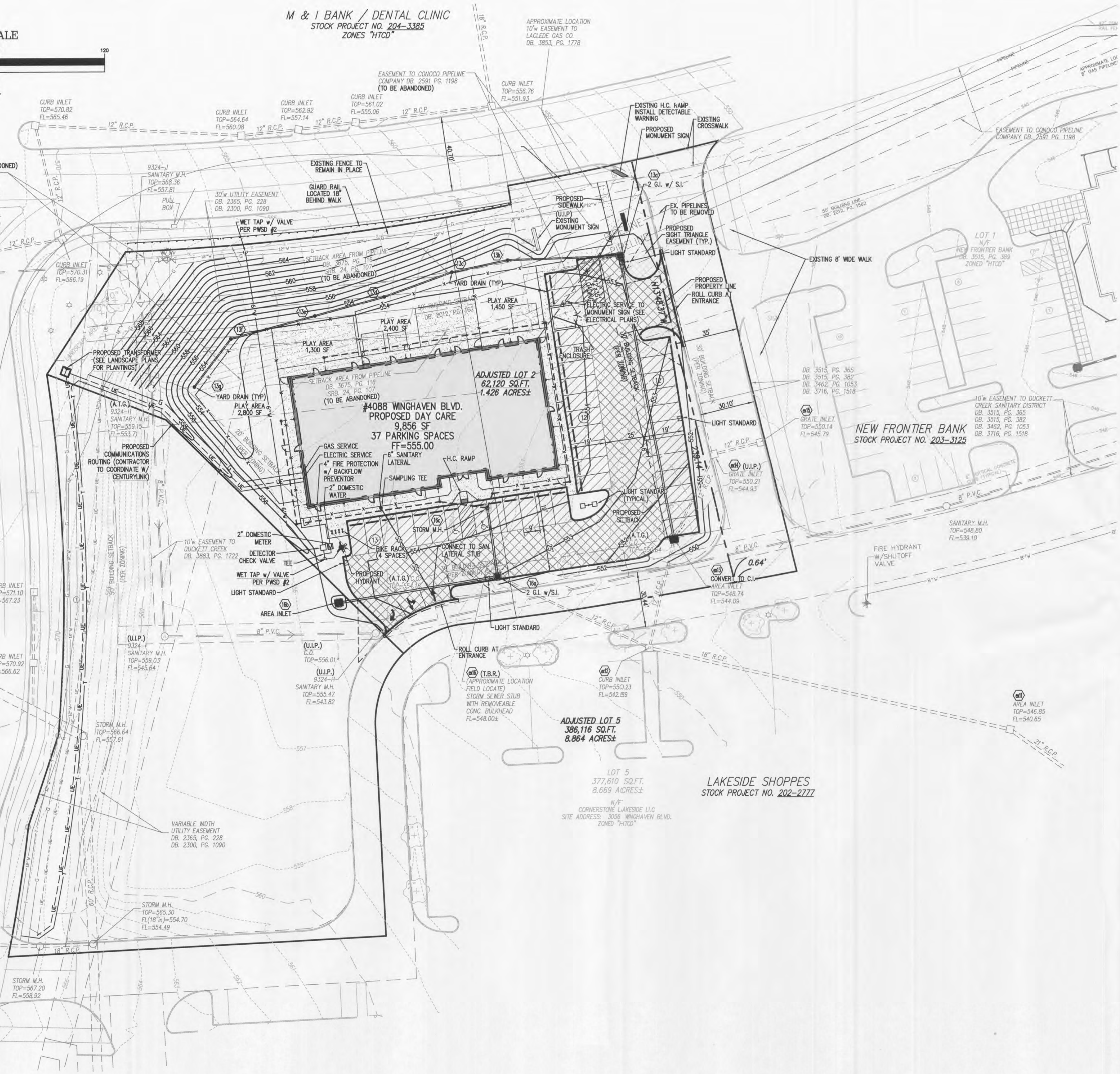
M & I BANK / DENTAL CLINIC
STOCK PROJECT NO. 204-3382
ZONES "HTCD"



PAVEMENT LEGEND

	LIGHT DUTY PAVEMENT
	HEAVY DUTY PAVEMENT
	HEAVY DUTY CONCRETE (TRASH DUMPSTER PAD)
	4" CONCRETE WALK

MERCY CLINIC
STOCK PROJECT NO. 211-4889.1
ZONES "HTCD"



M:\2013\13010001\2013010001.dwg (LAYOUT) CAL:LR:03: PLOTTED: Mar 26, 2013 12:09pm PLOTTED BY: awh/awh