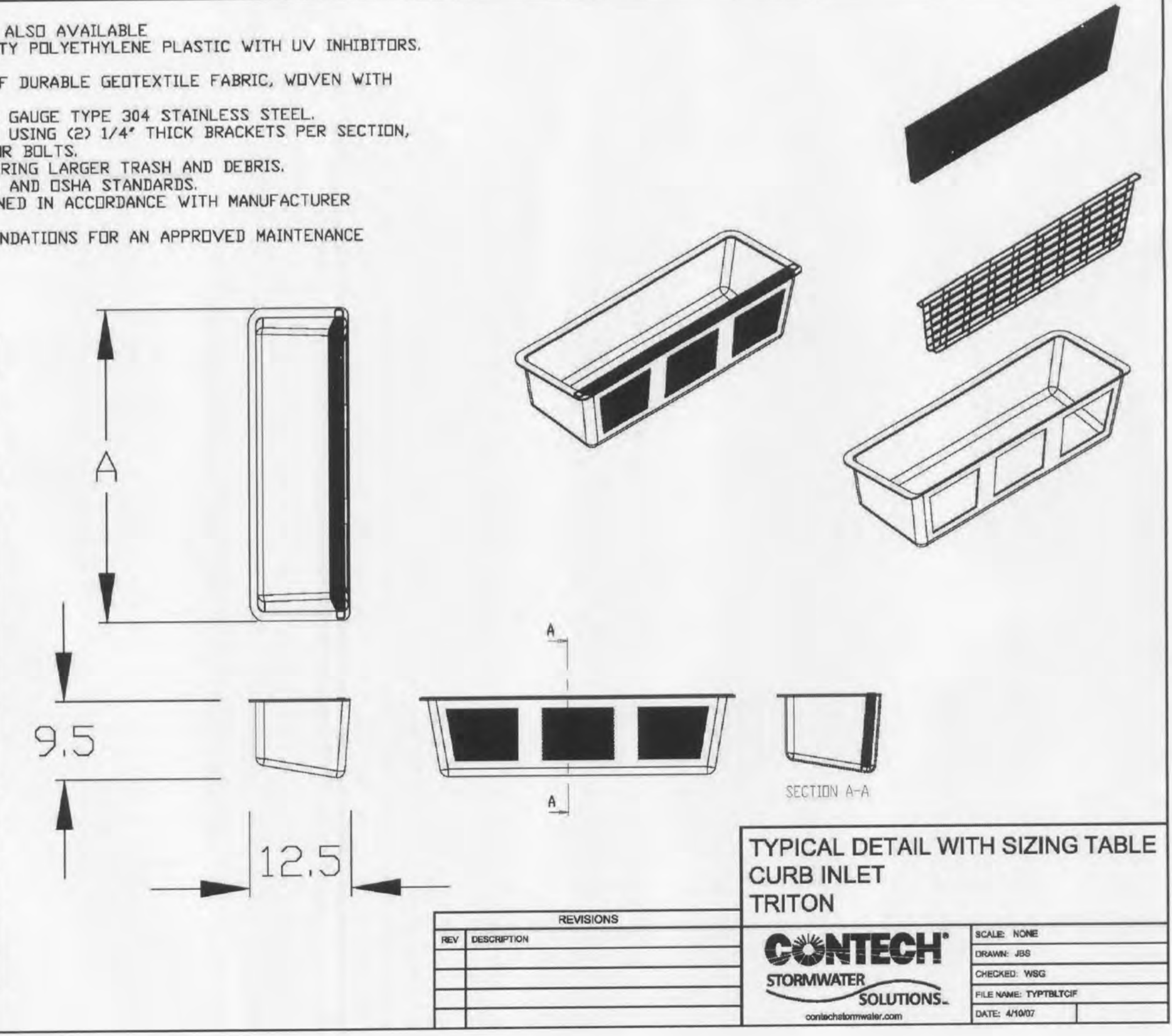


- NOTES
1. ALL DIMENSIONS ARE IN FEET. CUSTOM SIZES ALSO AVAILABLE.
  2. UNITS ARE CONSTRUCTED FROM HIGH DENSITY POLYETHYLENE PLASTIC WITH UV INHIBITORS. OVER 40% RECYCLED CONTENT.
  3. DISPOSABLE MEDIA-PAK IS CONSTRUCTED OF DURABLE GEOTEXTILE FABRIC, WOVEN WITH PERFORATED POLYPROPYLENE.
  4. MEDIA-PAK CAGE IS CONSTRUCTED USING 8 GAUGE TYPE 304 STAINLESS STEEL.
  5. FILTER BODY IS SECURED TO INSIDE WALL USING (2) 1/4" THICK BRACKETS PER SECTION, ATTACHED USING 3/8" X 3" EXPANSION ANCHOR BOLTS.
  6. OPTIONAL STORMWEB, DESIGNED FOR CAPTURING LARGER TRASH AND DEBRIS.
  7. FILTER MEDIA IS NON-HAZARDOUS PER EPA AND OSHA STANDARDS.
  8. FILTER SHALL BE INSTALLED AND MAINTAINED IN ACCORDANCE WITH MANUFACTURER RECOMMENDATIONS.
  9. PLEASE REFER TO MANUFACTURER RECOMMENDATIONS FOR AN APPROVED MAINTENANCE PROGRAM.

STANDARD DIMENSIONS

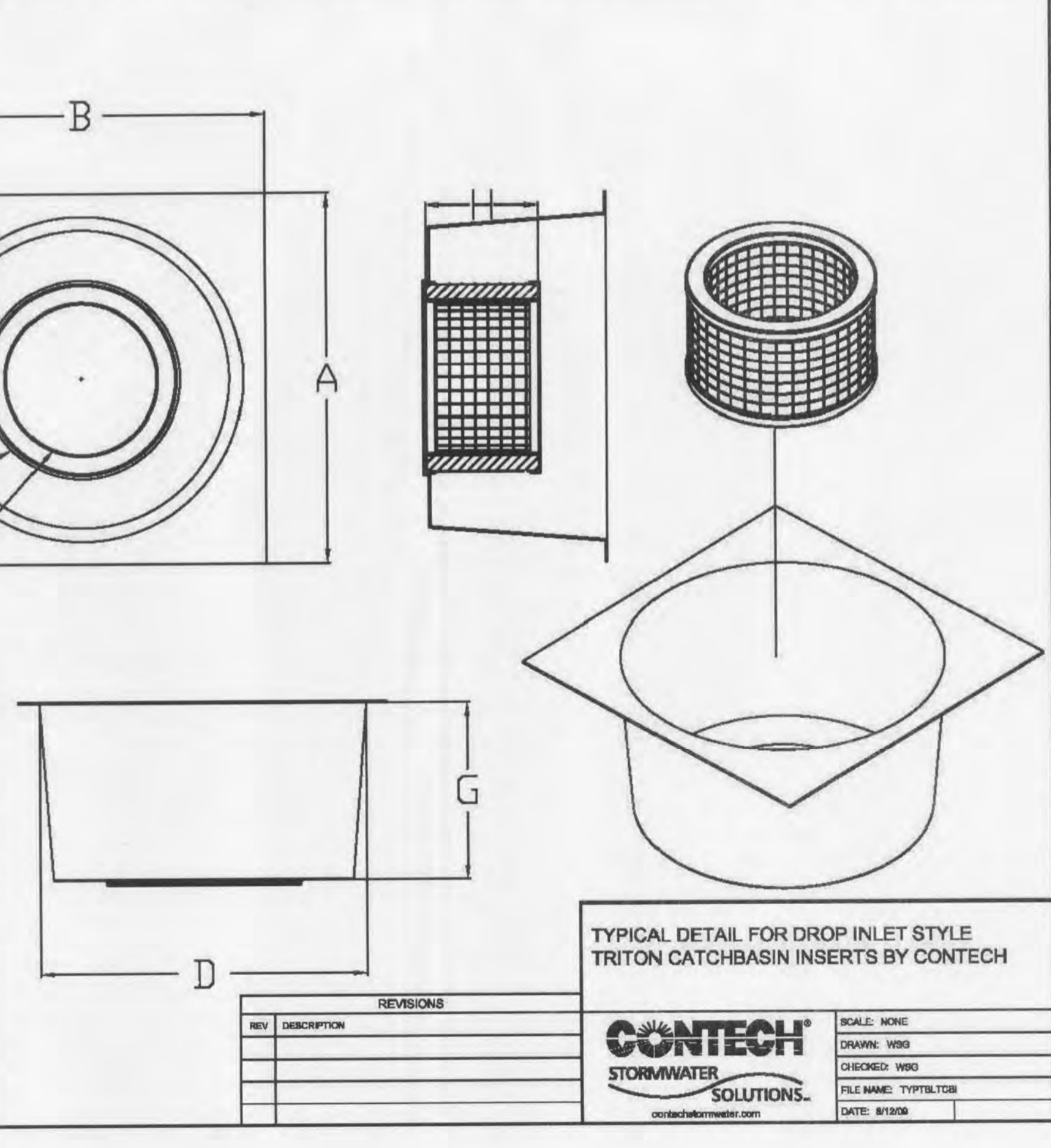
MODEL #	A*
TRC2	2.00
TRC2.5	2.50
TRC3	3.00
TRC3.5	3.50
TRC4	4.00
TRC5	5.00
TRC6	6.00
TRC7	7.00
TRC8	8.00
TRC9	9.00
TRC10	10.00
TRC12	12.00
TRC14	14.00
TRC21	21.00
TRC28	28.00



NOTES

1. ALL DIMENSIONS ARE IN INCHES UNLESS OTHERWISE NOTED.
2. UNITS ARE CONSTRUCTED FROM HIGH DENSITY POLYETHYLENE PLASTIC WITH UV INHIBITORS OR FIBERGLASS HAVING ISOPHTHALIC POLYESTER RESIN THAT ARE GEL COATED WITH 200MPA.
3. MEDIA CARTRIDGES CAN BE INTERCHANGED WITH GEMTRAP SERIES AS SITE CONDITIONS CHANGE.
4. LOW PROFILE FILTER ARE ALSO AVAILABLE FOR SHALLOW CATCH BASINS.
5. CUSTOM SIZES ARE AVAILABLE TO FIT MOST APPLICATIONS. PLEASE CALL A LOCAL CONTECH OFFICE NEAR YOU FOR DETAILS.
6. OPTIONAL TRASH GUARD AVAILABLE.
7. 8IN. STAKE AND 3/4IN. CAPACITY FILTERS ALSO AVAILABLE FOR LARGER SERIES CAPACITIES.
8. 4" DIMENSIONS "A" AND "B" SUPPORT FLANGES CAN BE ADJUSTED TO SUITE VARYING SIZES OF CATCH BASINS.
9. CUSTOM INSTALL BRACKETS ARE AVAILABLE AS NEEDS.

MODEL #	A*	B*	C	D	E	F	G	# CARTRIDGES	H	BASIN TYPE
TR1212	15.00	15.00	11.00	11.00	6.75	3.50	6.0	1 SHORT	4.5	HDPE
TR12RD	Ø15.00	Ø11.00	6.75	3.50	6.0	1 SHORT	4.5	HDPE		
TR1616	20.00	20.00	14.00	14.00	6.75	3.50	10.5	1 STD	8.5	HDPE
TR16RD	Ø20.00	Ø11.00	6.75	3.50	6.0	1 SHORT	4.5	HDPE		
TR1818	24.00	24.00	18.00	18.00	10.0	6.25	10.5	1 STD	8.5	HDPE
TR18RD	Ø24.00	Ø16.50	6.75	3.50	10.5	1 STD	8.5	HDPE		
TR1824	19.00	25.00	18.00	18.00	10.0	6.25	10.5	1 STD	8.5	HDPE
TR2024	21.00	25.00	18.00	18.00	10.0	6.25	10.5	1 STD	8.5	HDPE
TR24SR	27.00	27.00	23.50	23.50	14.0	10.0	13.0	1 STD	8.5	HDPE
TR24RD	Ø28.00	Ø21.00	14.0	10.0	13.0	1 STD	8.5	HDPE		
TR2436	32.00	40.00	22.00	29.00	14.0	10.0	21.0	1 TALL	16.5	HDPE
TR3030	34.00	34.00	22.00	29.00	14.0	10.0	21.0	1 TALL	16.5	HDPE
TR36SR	38.00	36.00	33.00	33.00	14.0	10.0	22.0	1 TALL	16.5	FIBRG
TR36RD	Ø36.00	Ø33.00	14.0	10.0	22.0	1 TALL	16.5	FIBRG		
TR42RD	Ø42.00	Ø33.00	14.0	10.0	22.0	1 TALL	16.5	FIBRG		
TR4848	48.00	48.00	42.00	42.00	24.0	19.75	22.0	1 TALL	17.5	FIBRG
TR48RD	Ø48.00	Ø33.00	14.0	10.0	22.0	1 TALL	16.5	FIBRG		



DRAWN BY: A.C.D. CHECKED BY: G.M.S.  
 DATE: 01/15/13 JOB NO.: 212-5043

REVISIONS:

1	02/05/13	- CITY/WATER REVISIONS
2	03/12/13	- CITY REVISIONS
3	03/26/13	- CITY REQUIRED SETS

P+Z No. 9831.41.04  
 (APPROVED JANUARY 4, 2013)  
 City No.

Page No.  
 C7.1