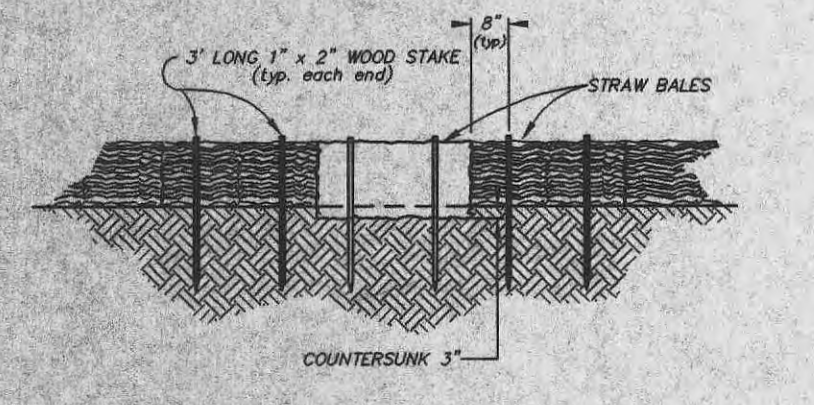
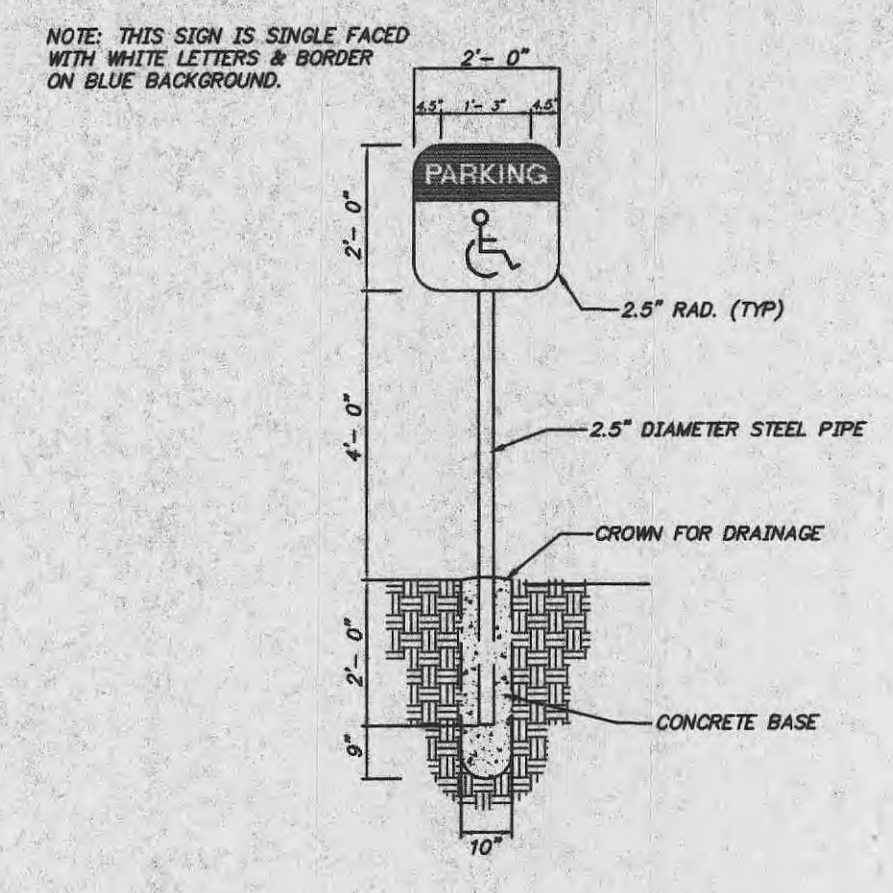


HANDICAPPED PARKING MARKING
N.T.S.

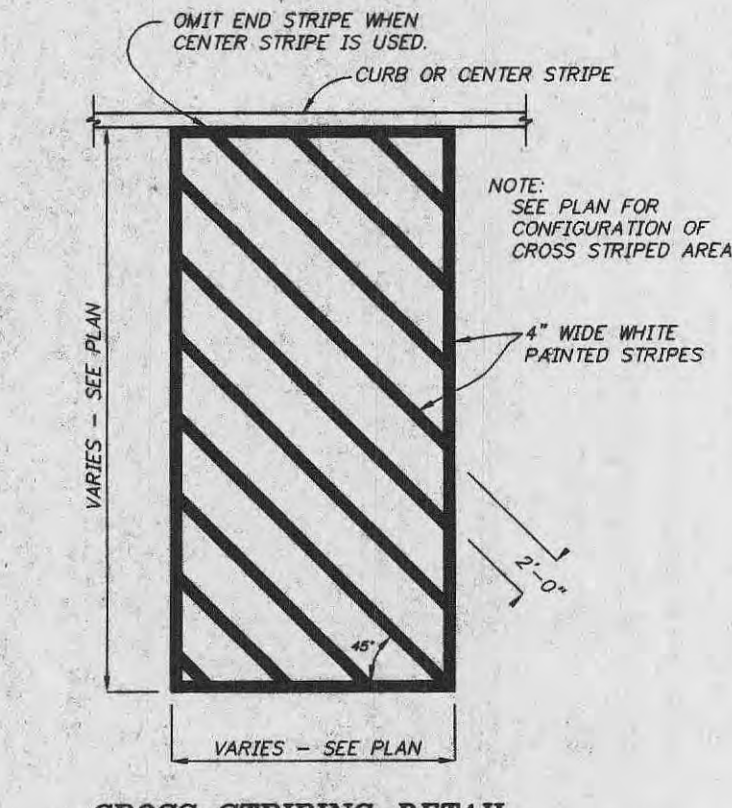


STAKED BALE DETAIL
N.T.S.

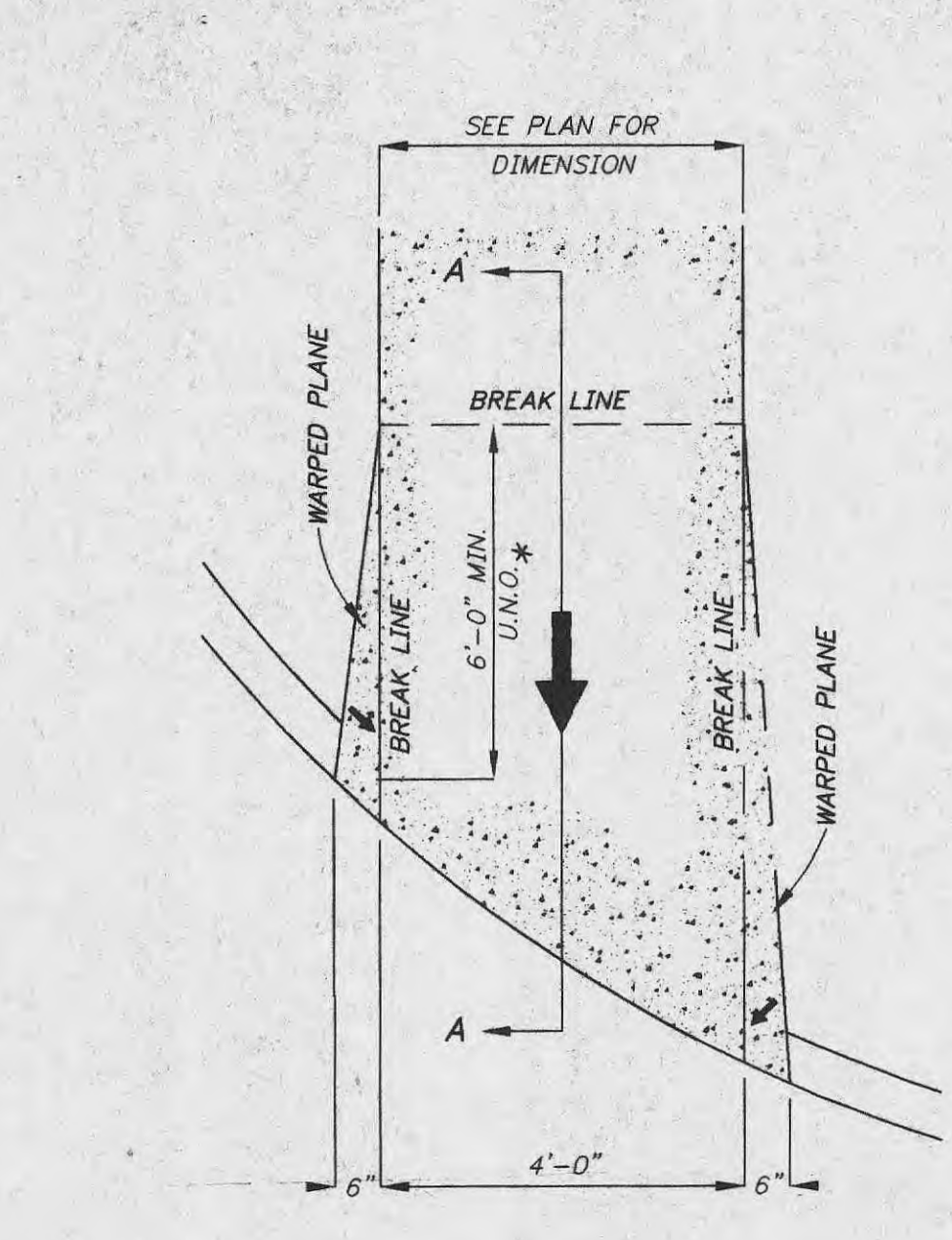
Siltation Control
Siltation control shall consist of temporary berms and swales to divert storm water run-off to a natural discharge point. (See Grading Plan for locations). At each point there shall be a double row of straw bales with four feet of separation between bales and straw bales shall be staggered. In areas where a berm and swale are not feasible, a single row of straw bales shall be placed end to end to protect adjacent property and right-of-way (this shall be the responsibility of the grading contractor or developer if so agreed). Upon completion of storm sewers, straw bales shall be placed on all sides of appropriate structures to keep silt out of storm sewer (this shall be the responsibility of the sewer contractor or the developer if so agreed). All straw bales shall be securely anchored and properly maintained until all disturbed areas are paved or vegetation established.



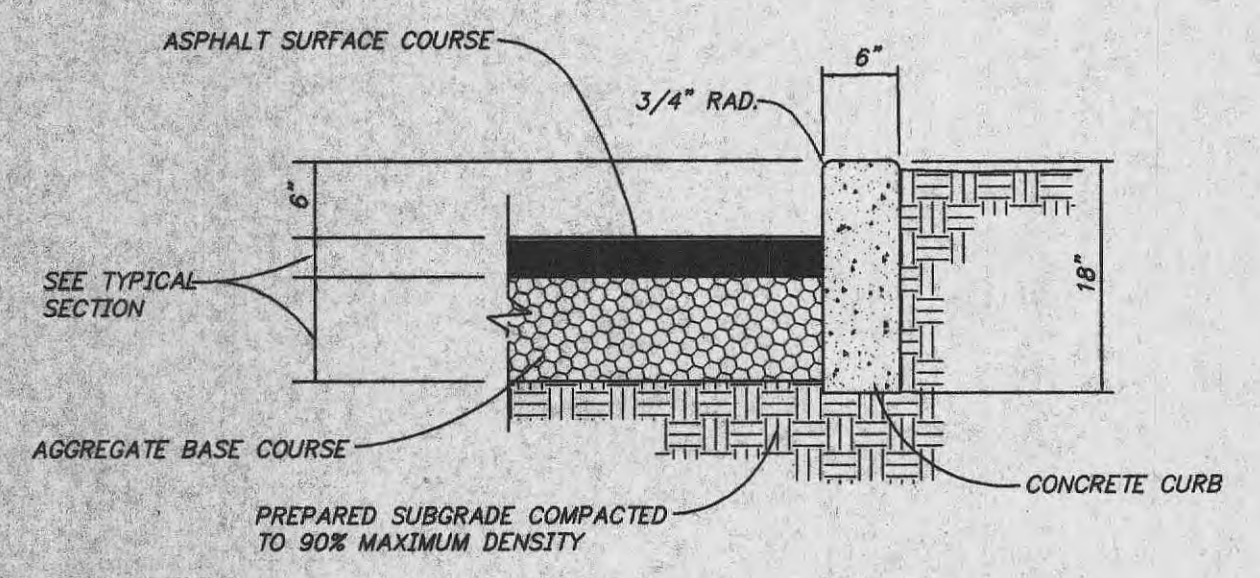
HANDICAPPED SIGN DETAIL
N.T.S.



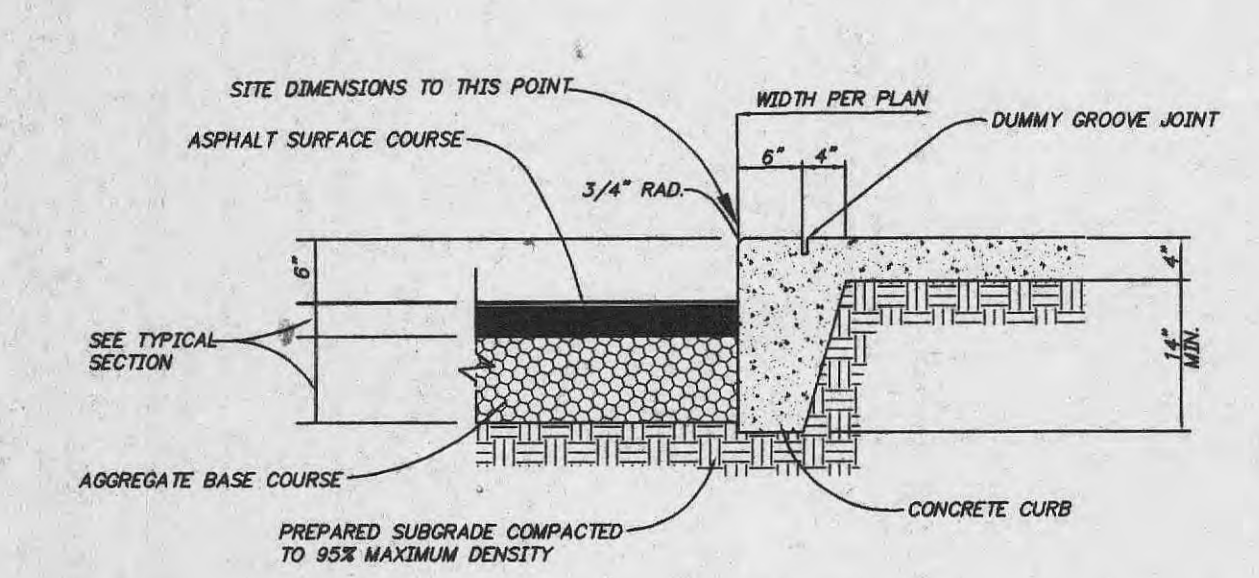
CROSS STRIPING DETAIL
N.T.S.



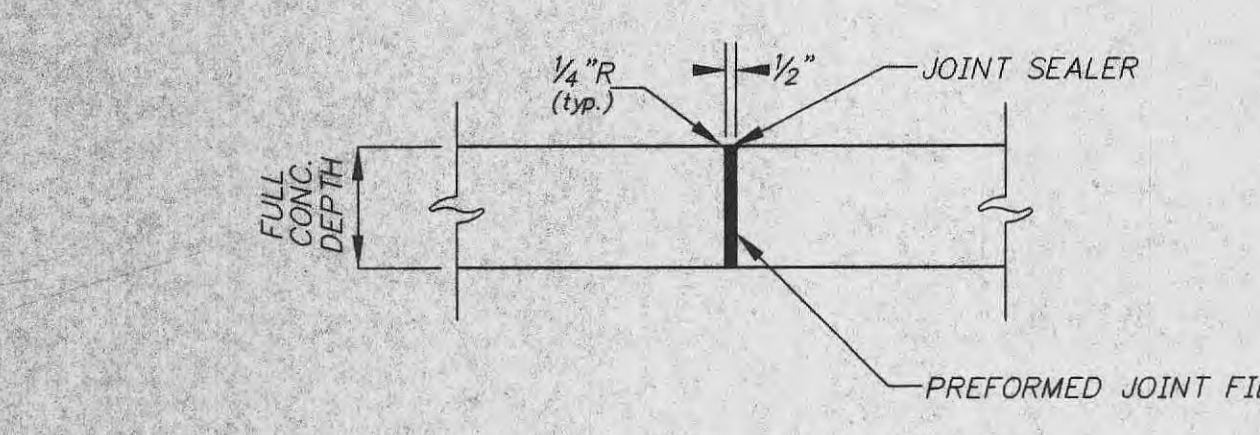
CURVED CURB HANDICAPPED RAMP DETAIL
N.T.S.



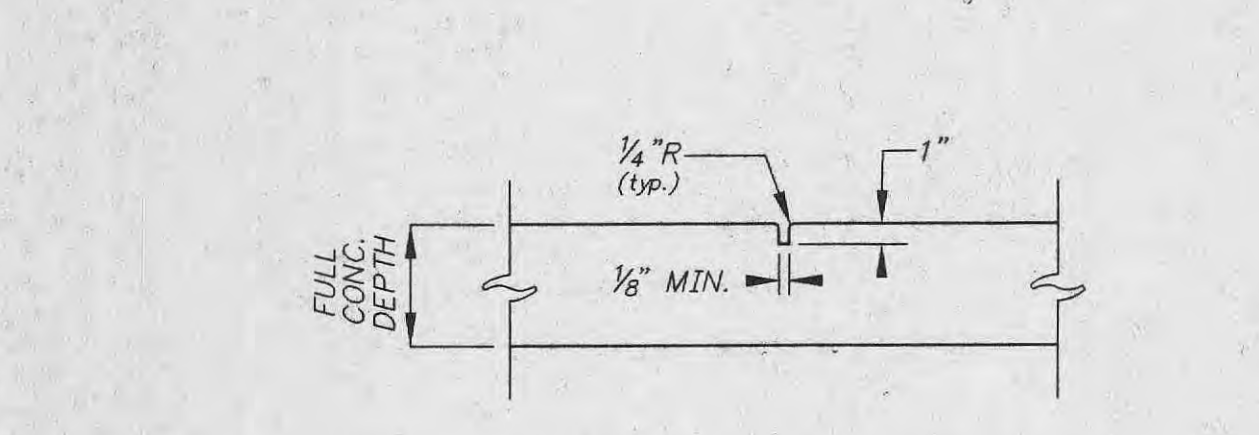
6" VERTICAL CONCRETE CURB
N.T.S.



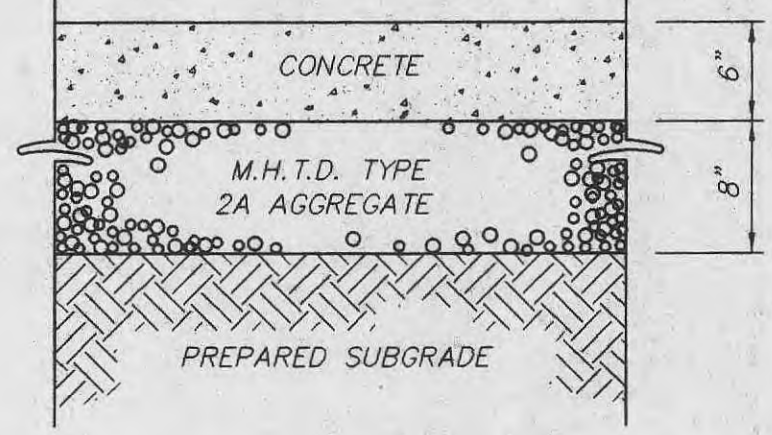
6" CONCRETE CURB WITH SIDEWALK
N.T.S.



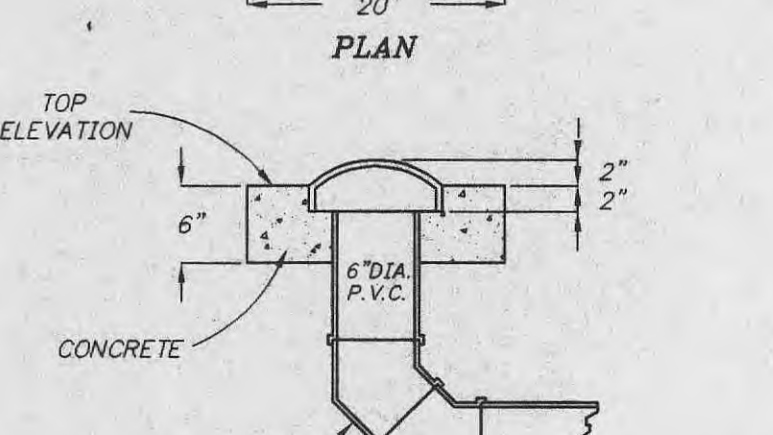
CURB AND SIDEWALK EXPANSION JOINT
AT P.T. & P.C. POINTS OF ROUNDINGS AND AT INTERVALS NOT EXCEED 30' (SEE SIDEWALK DETAIL)
N.T.S.



CURB AND SIDEWALK CONTRACTION JOINT
AT INTERVALS NOT EXCEED 10' (SEE SIDEWALK DETAIL)
N.T.S.

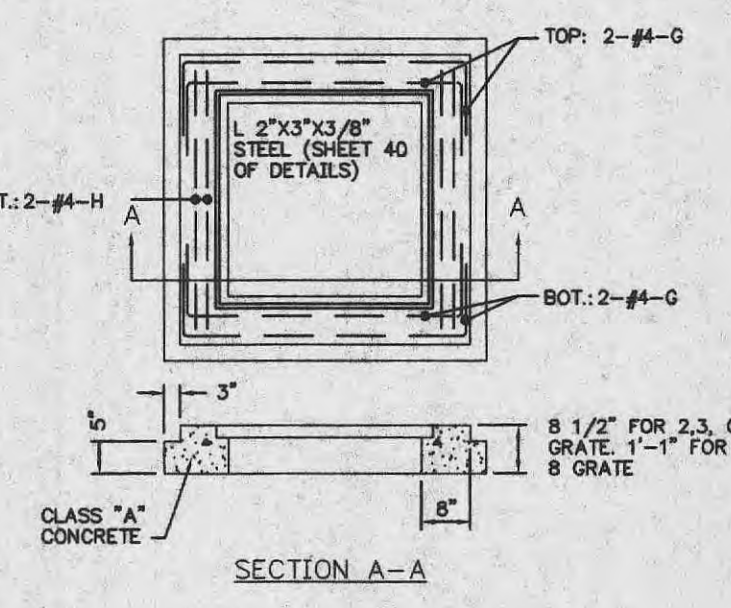


TRASH DUMPSTER PAVEMENT SECTION
N.T.S.

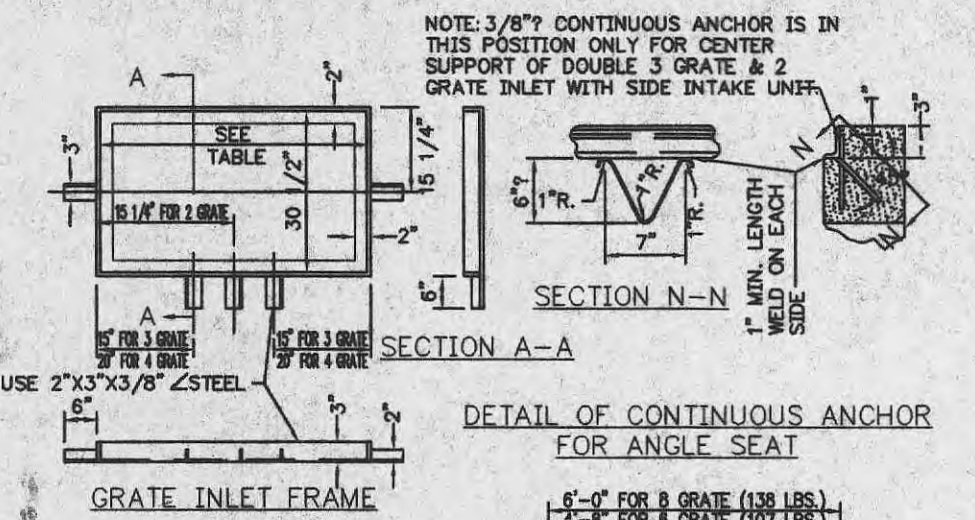


PRIVATE YARD DRAIN
N.T.S.

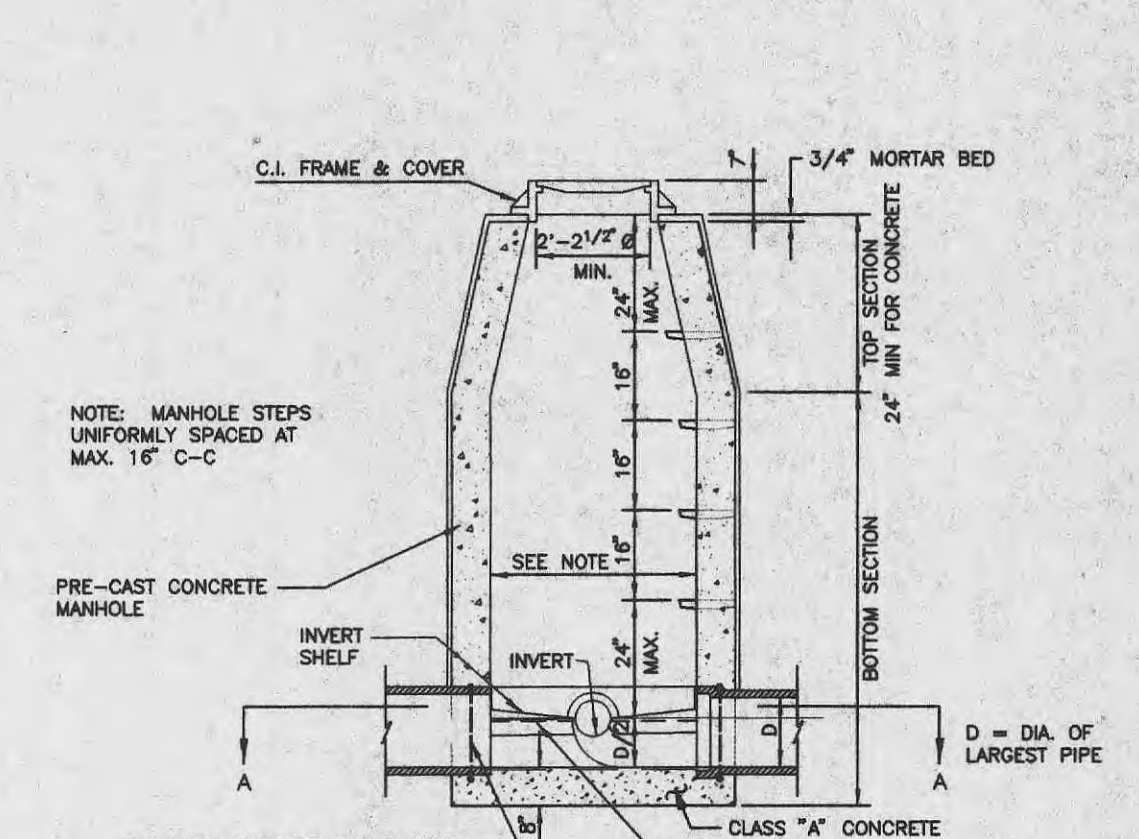
CALL	USE	STRAIGHT BARS
G-1	2,3 OR 4 GRATE	3'-4"
G-2	6 & 8 GRATE	5'-10"
H-2	2 GRATE	3'-0"
H-3	3 & 6 GRATE	4'-0"
H-4	4 & 8 GRATE	6'-0"



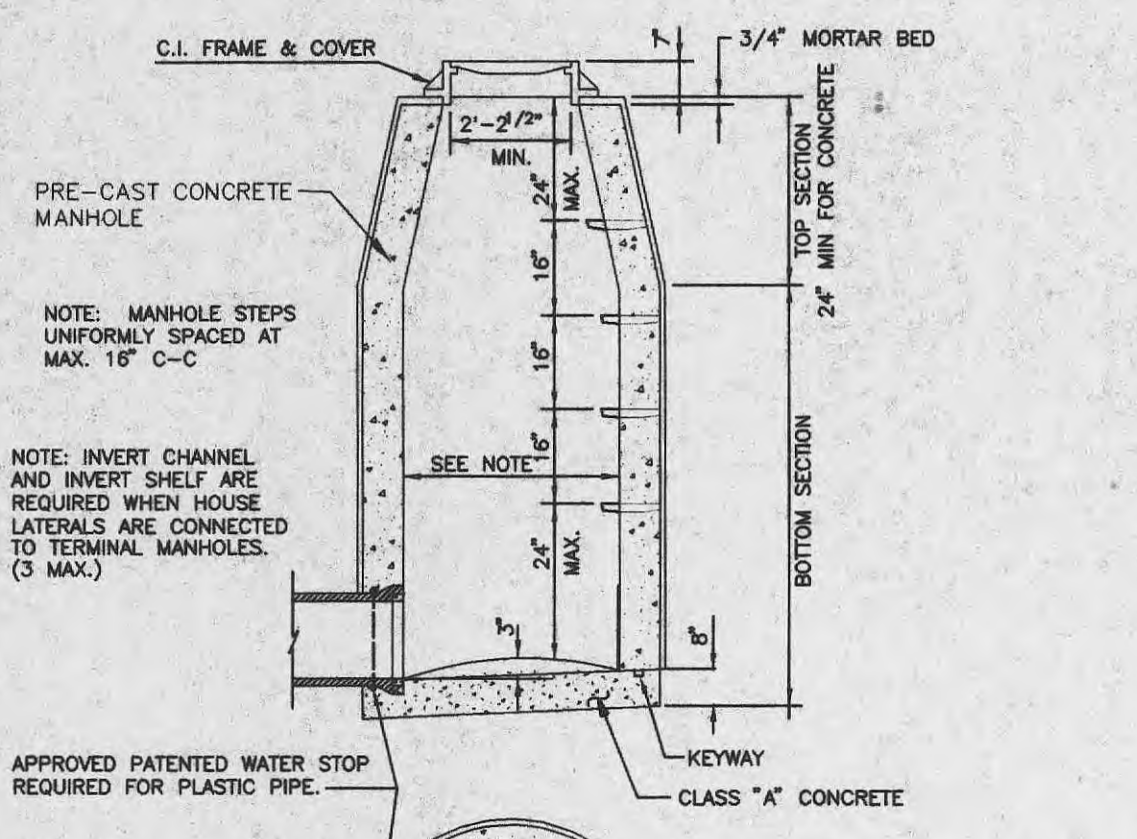
STEEL REQUIREMENTS FOR GRATE INLET SEAT
N.T.S.



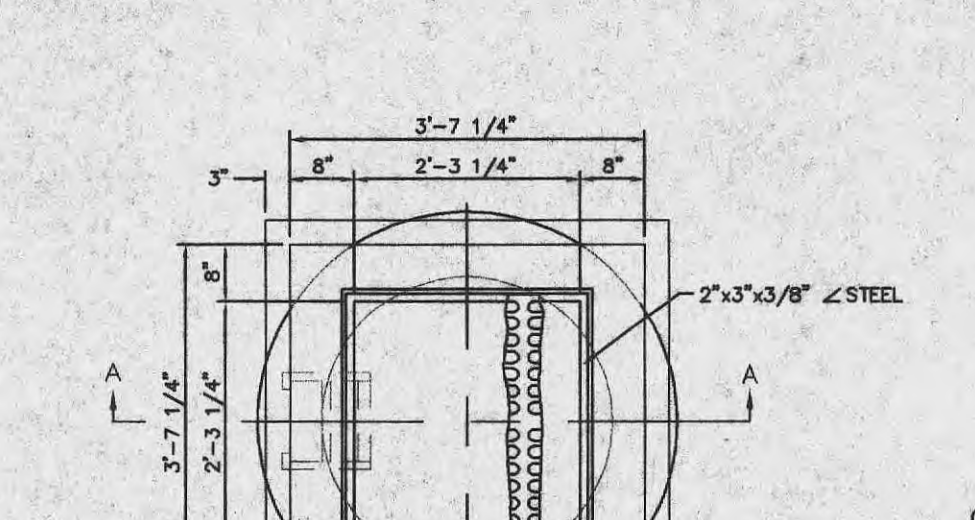
DETAILS OF INLET FRAME AND GRATES
N.T.S.



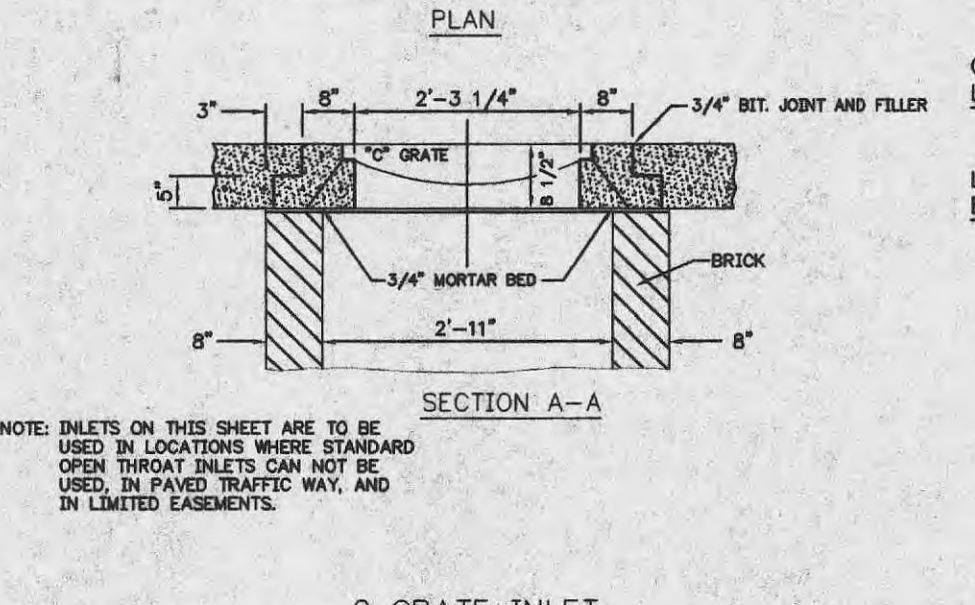
LINE MANHOLE
PIPE SEWERS 8"-24" DIA.
N.T.S.



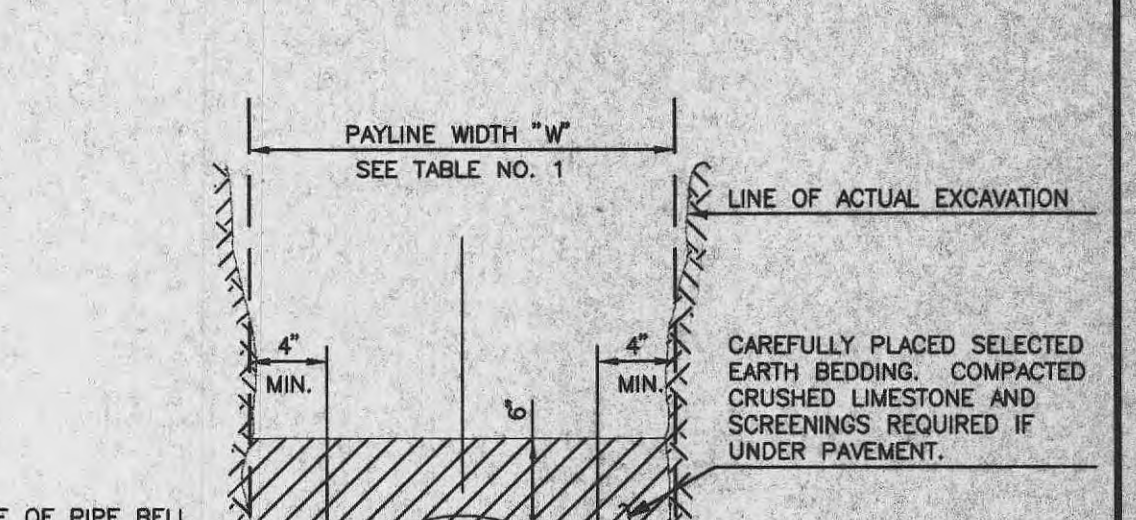
TERMINAL MANHOLE
N.T.S.



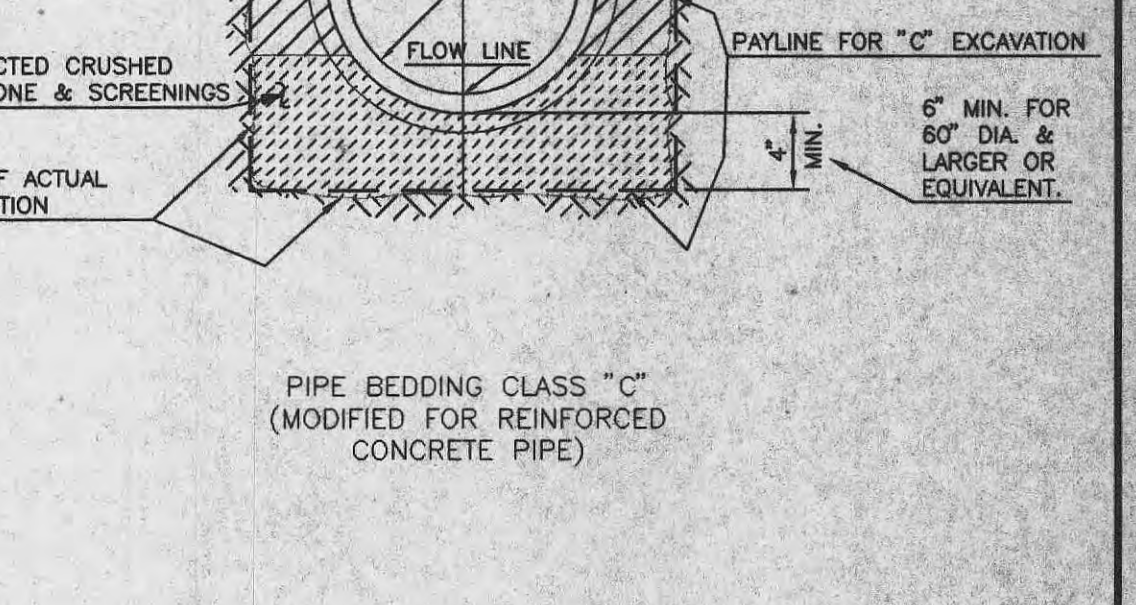
2 GRATE INLET
N.T.S.



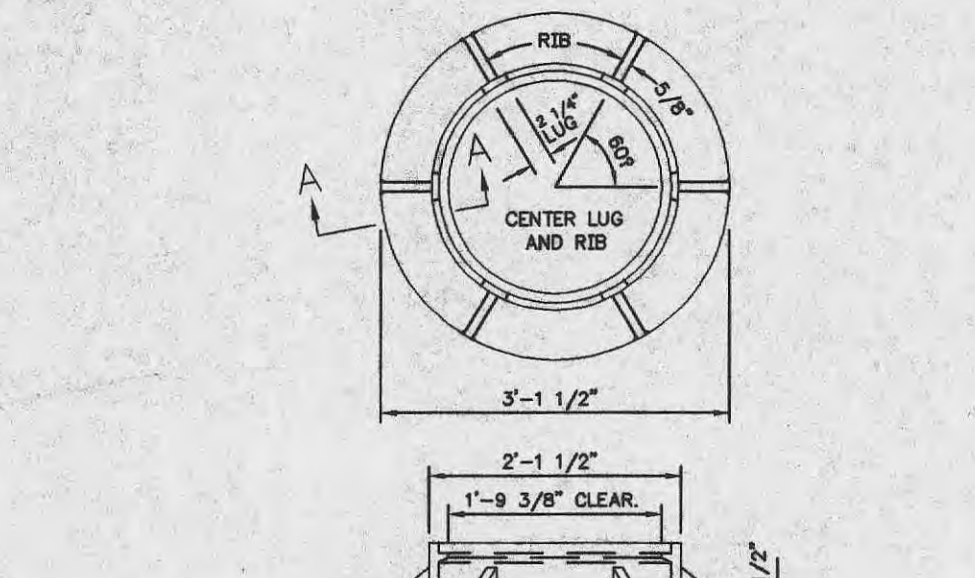
CAST IRON MANHOLE FRAME
N.T.S.



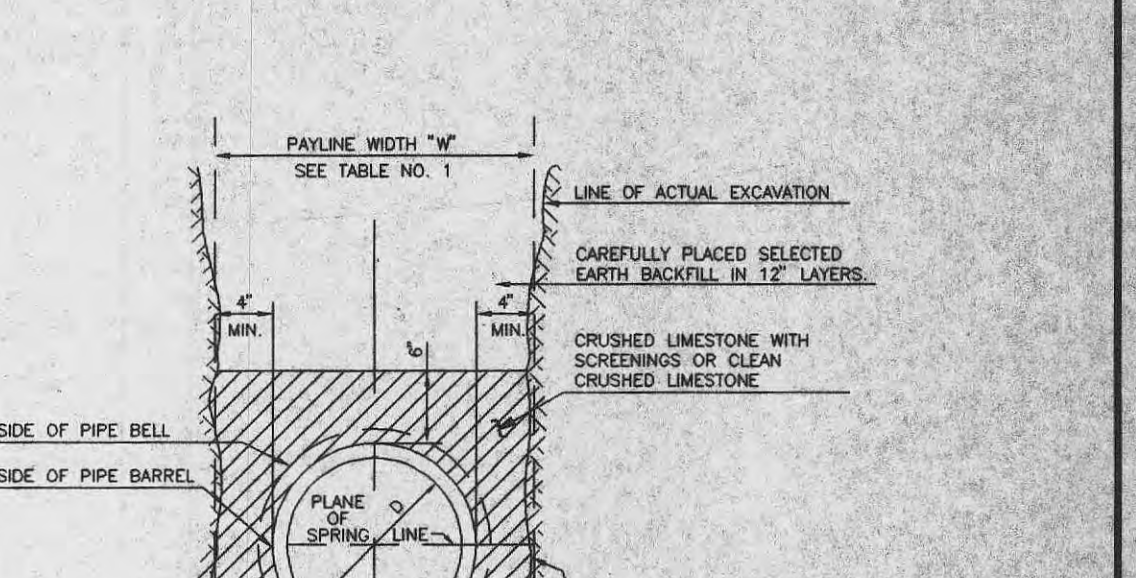
PIPE BEDDING CLASS "C"
(MODIFIED FOR REINFORCED CONCRETE PIPE)
N.T.S.



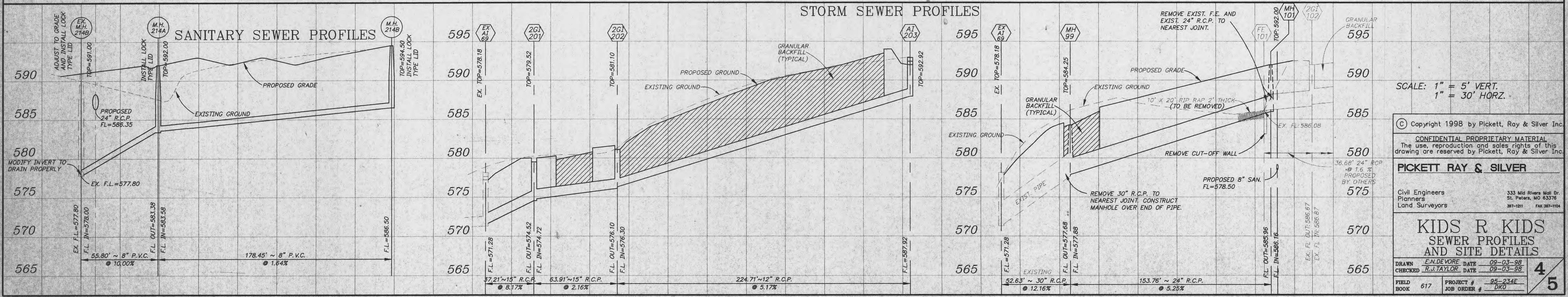
PIPE BEDDING CLASS "C"
(MODIFIED FOR REINFORCED CONCRETE PIPE)
N.T.S.



CAST IRON MANHOLE COVER
DEETER FOUNDRY, INC. # 1275
N.T.S.



CLEANOUT DETAIL
N.T.S.



SCALE: 1" = 5' VERT.
1" = 30' HORZ.

© Copyright 1998 by Pickett, Ray & Silver Inc.
CONFIDENTIAL PROPRIETARY MATERIAL
The use, reproduction and sales rights of this drawing are reserved by Pickett, Ray & Silver Inc.
PICKETT RAY & SILVER
Civil Engineers
Planners
Land Surveyors
333 Mid Rivers Mall Dr.
St. Peters, MO 63376
393-1211 FAX 393-1104
KIDS R KIDS
SEWER PROFILES
AND SITE DETAILS
DRAWN: E.A. DEVOIR DATE: 09-03-98
CHECKED: R.J. TAYLOR DATE: 09-03-98
FIELD BOOK: 617 PROJECT: 95-234E
JOB ORDER: LKO