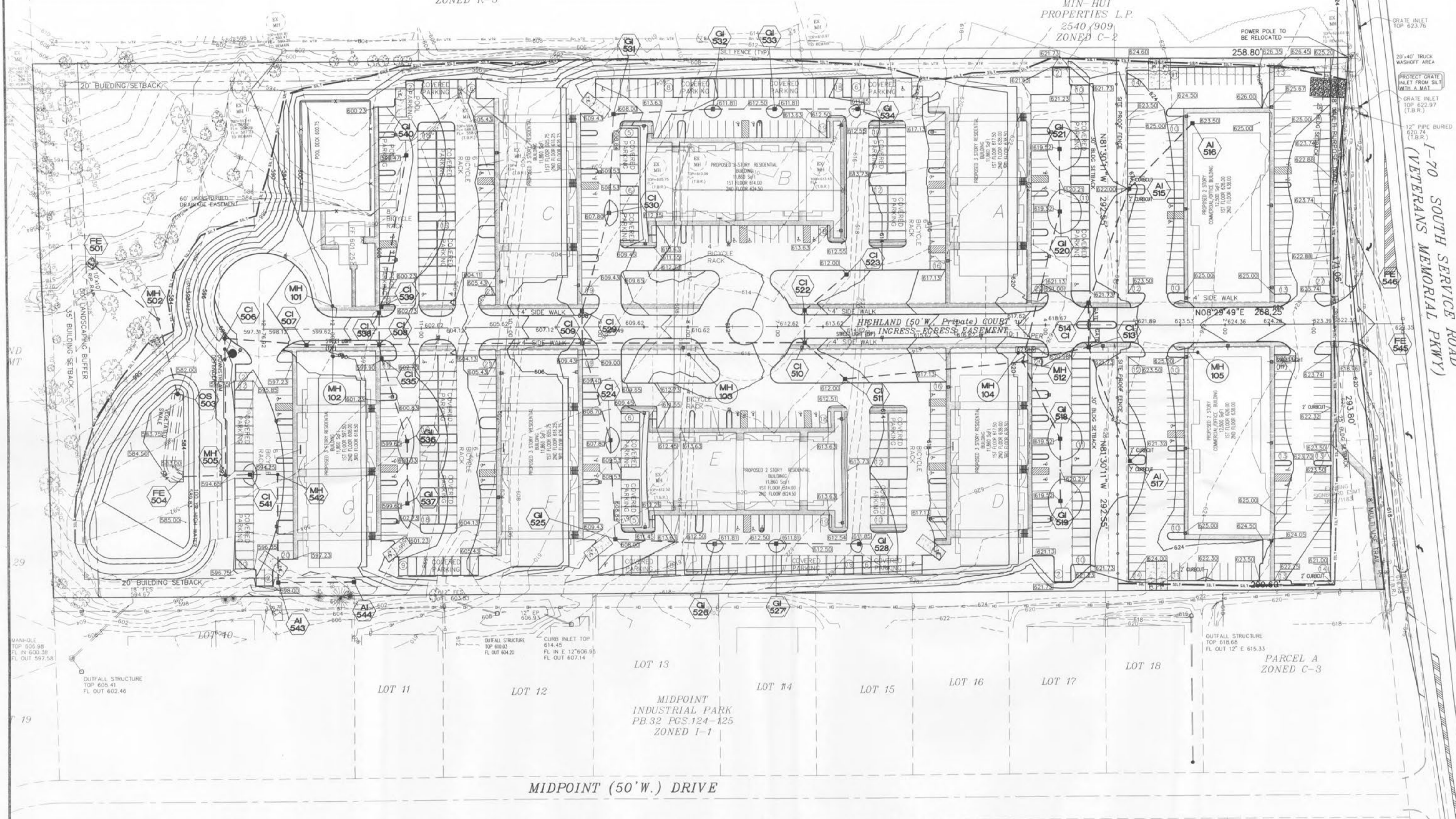


N/F
R & S REAL
ESTATE HOLDINGS,
L.L.C. 2849/96
ZONED R-5

N/F
MIN-HUI
PROPERTIES L.P.
2540/909
ZONED C-2



**GRADING PLAN
KING ARTHUR'S
HIGHLAND TERRACE
IMPROVEMENT PLANS**

S C ST. CHARLES ENGINEERING & SURVEYING, INC.
801 S. FIFTH STREET, SUITE 202
ST. CHARLES, MO 63301
TEL: (636) 947-0607 FAX: (636) 947-2448

S C E S

1-30-08
ORDER NO.
07-0059-01
DATE
07/03/07

O'FALLON P+Z NO. 3606.02
1:\070059 - Highland Terrace.dwg\070059-CIVIL.dwg
01/30/08-925an

12/24/07
1/29/08
revised per City comments
revised per City comments