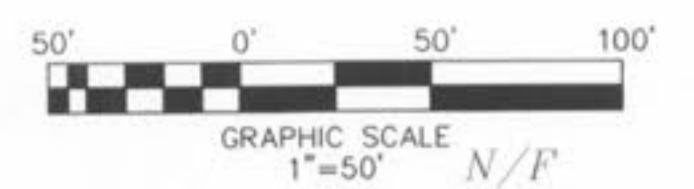
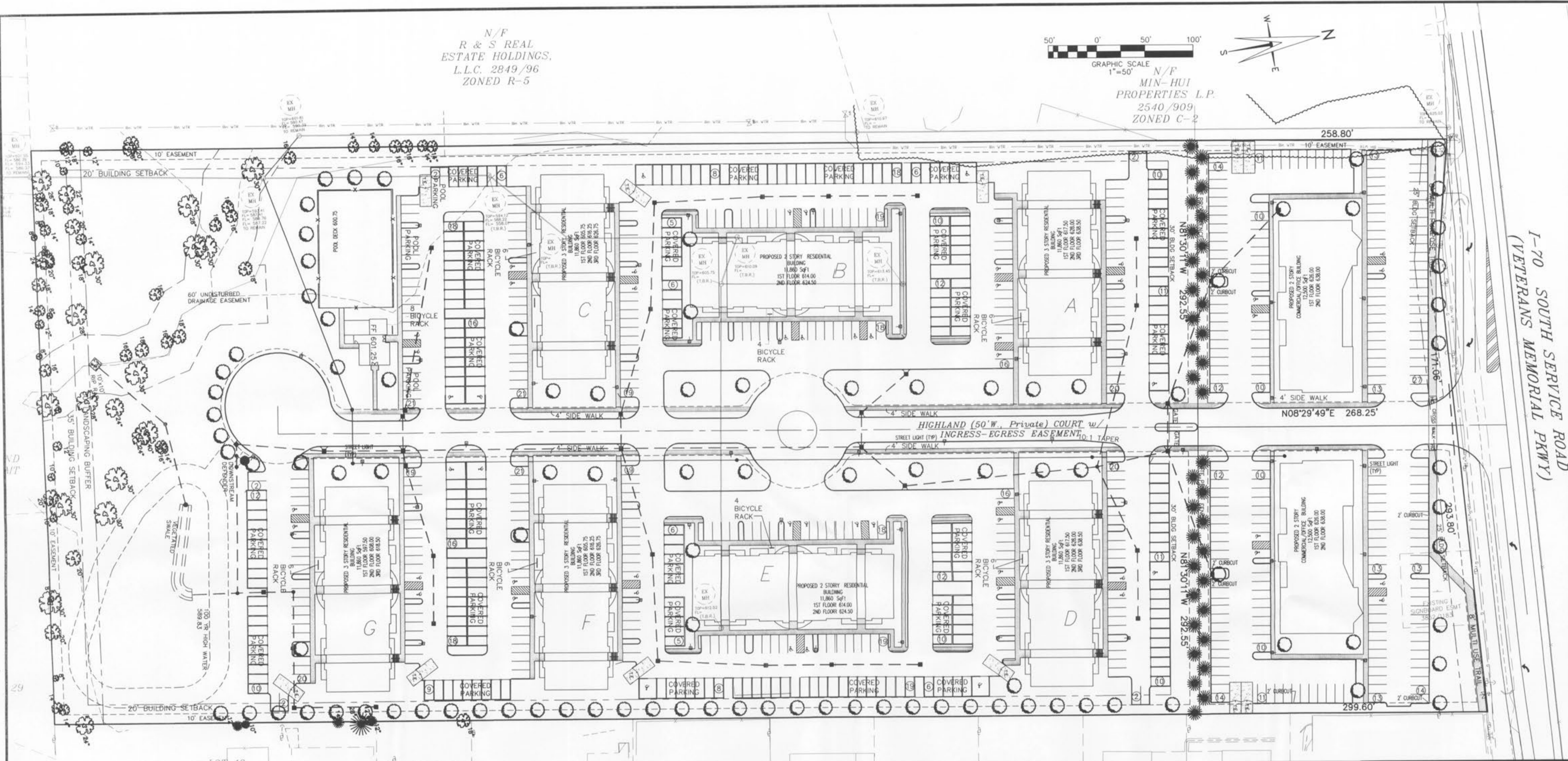


N/F
R & S REAL
ESTATE HOLDINGS,
L.L.C. 2849/96
ZONED R-5



N/F
MIN-HUI
PROPERTIES L.P.
2540/909
ZONED C-2



LANDSCAPING SITE NOTES

- Tree Removal Ordinance
Total number of trees on-site: 208
Total Number to be removed: 140
Percentage of trees retained: 33%
- Proposed trees: 99
- Bufferyards
20' Buffer between Residential and Commercial Lots
Per Section 400.425(C)(2)(a)(1) Two (2) plant units and a six (6) foot high sight proof fence shall be required for every one hundred (100) feet of frontage shall be provided within a twenty (20) foot bufferyard.
585.10' * 2/100 = 12 plant units required
12 plant units * 30 = 360 points
36 - 6' Evergreen Trees staggered at fifteen (15) foot Centers as shown. 36 trees * 10 plant units 360 points
50' Buffer strip along South Property line is undisturbed.
Per Section 400.425(C)(4)(a)(3) Three (3) plant units for every one hundred feet of frontage shall be provided within a minimum fifty (50) foot wide bufferyard.
587.14' * 3/100 = 18 plant units required
Existing trees to be for plant unit calculations
18 plant units * 30 = 540 points
Existing tree total caliper 590
Existing tree points = 590 * 5 = 2950 points
20' Buffer along East property line is optional and for the benefit of the condominiums.
- Landscaping required in Parking Areas:
792 total parking spaces * 270 Sq Ft = 213,840 SqFt
213,840 SqFt * 8% = 12,830.4 SqFt Required.
Landscape provided in Parking Areas: 36,339 SqFt.
- Street trees shall not be planted closer than three (3) feet to any curb.
- Street trees shall not be placed within twenty-five (25) feet of street lights.
- Street trees shall not be planted within ten (10) feet of street inlets or manholes.

LANDSCAPE PLAN

SYMBOL	TYPE	SIZE	NUMBER
	TREES TO REMAIN	VARIES	68
	DECIDUOUS TREES TO BE PLANTED	2.5'	102
	EVERGREEN TREES TO BE PLANTED	6'	36

revised per City comments

1/29/08

**Landscaping
KING ARTHUR'S
HIGHLAND TERRACE
IMPROVEMENT PLANS**

ST. CHARLES ENGINEERING & SURVEYING, INC.
801 S. FIFTH STREET, SUITE 202
ST. CHARLES, MO 63301
TEL: (636) 947-0607 FAX: (636) 947-2448



ORDER NO.
07-0059-01
DATE
07/03/07