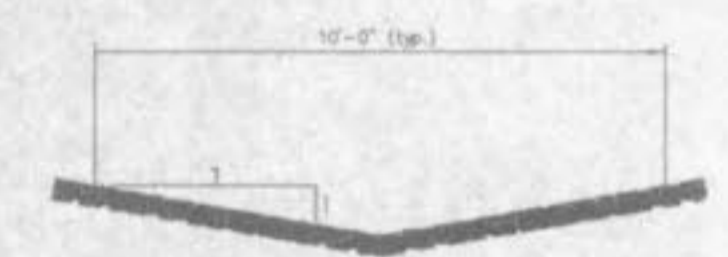


NOTE

Driveways shall not interfere with sidewalk handicap ramps.
Phase One water connection to existing main shall be disconnected and reconnected to the new 12" water main.
Overall site grading was completed with Phase One construction activities.



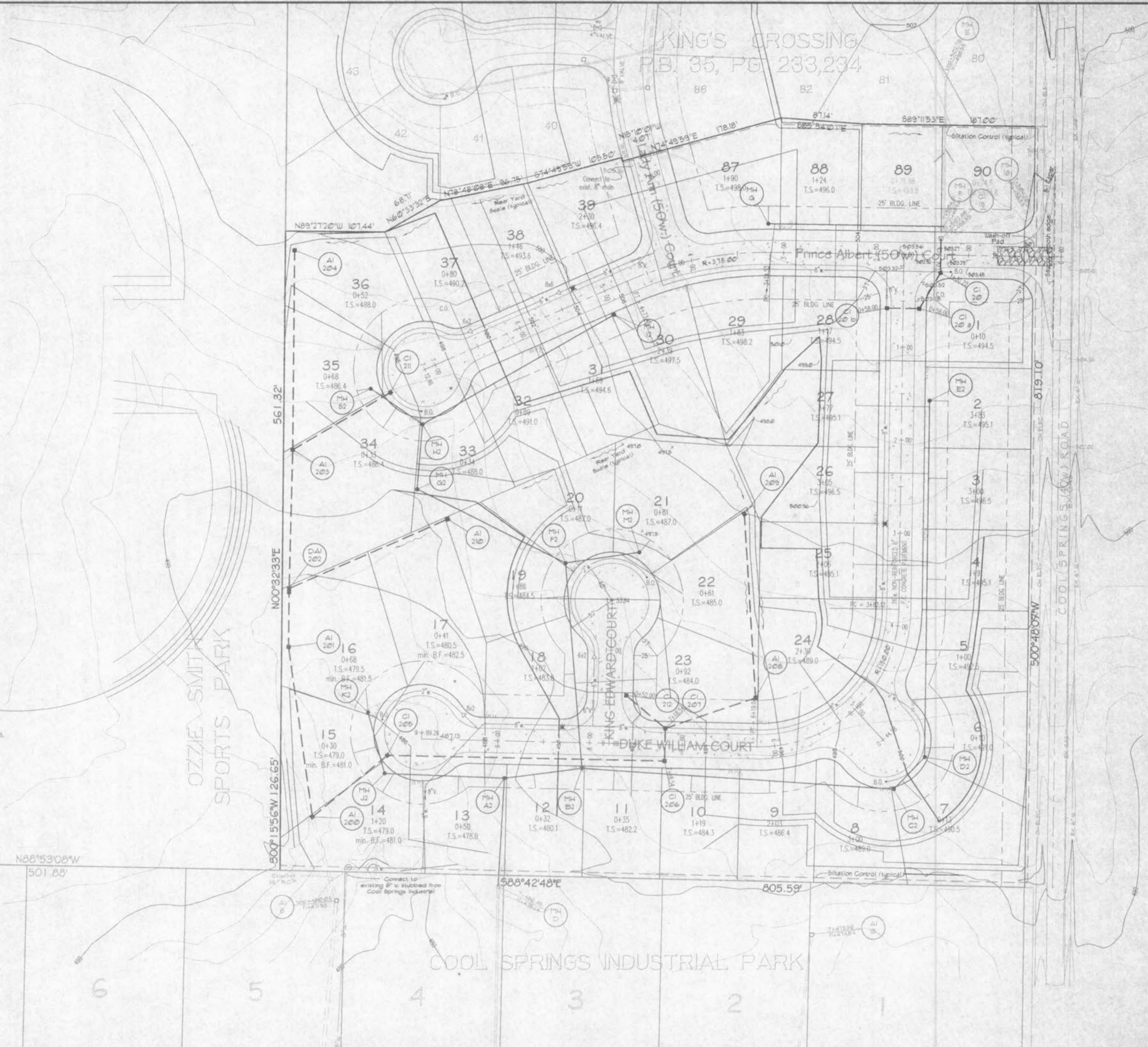
SCALE: 1"=50'



SWALE AT 1% MIN. GRADE WITH A MAX. "0" OF 4 C.F.S.
DEPTH = 0.64'
VELOCITY = 1.38 F.P.S.
SWALE AT 10% MAX. GRADE WITH A MAX. "0" OF 4 C.F.S.
DEPTH = 0.42'
VELOCITY = 3.28 F.P.S. n = 0.05

TYPICAL CROSS SEC. OF RELIEF SWALES

W/1/4 CORNER OF
S/1/4 OF THE
S/4 1/4 OF SEC 27



N88°53'08"W
501.88'

S00°15'56"W 126.65'

S88°42'48"E

805.59'

S00°48'07"W 500.4807W

ON ELEC. COOL SPRINGS ROAD

COOL SPRINGS INDUSTRIAL PARK