

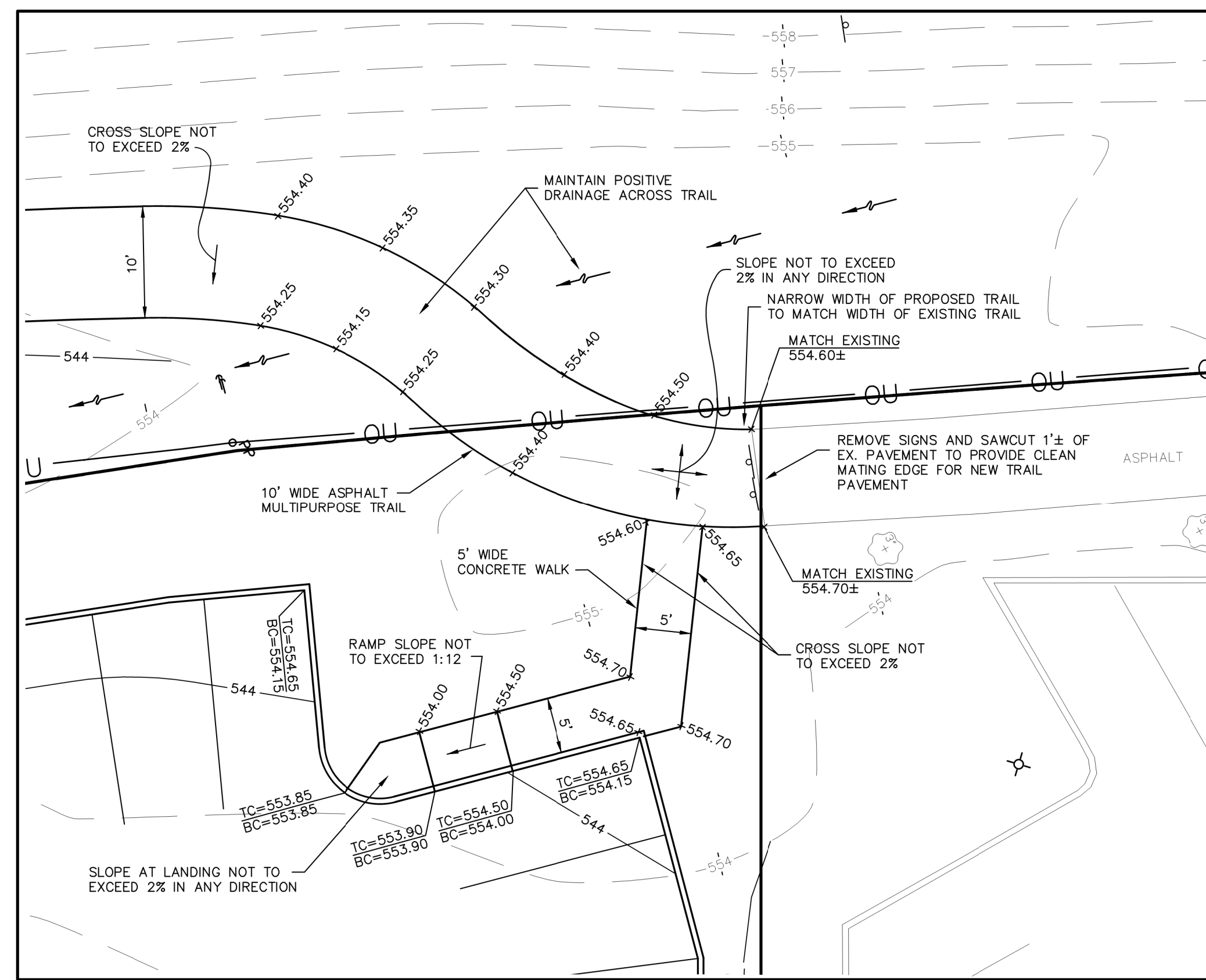
SANITARY SEWER PROFILE

SCALE: 1"=30' HOR.
1"=10' VER.

NOTE: ALL SANITARY LATERALS AND SANITARY MAINS CROSSING UNDER PAVEMENT MUST HAVE PROPER ROCK BACKFILL AND REQUIRED COMPACTION.

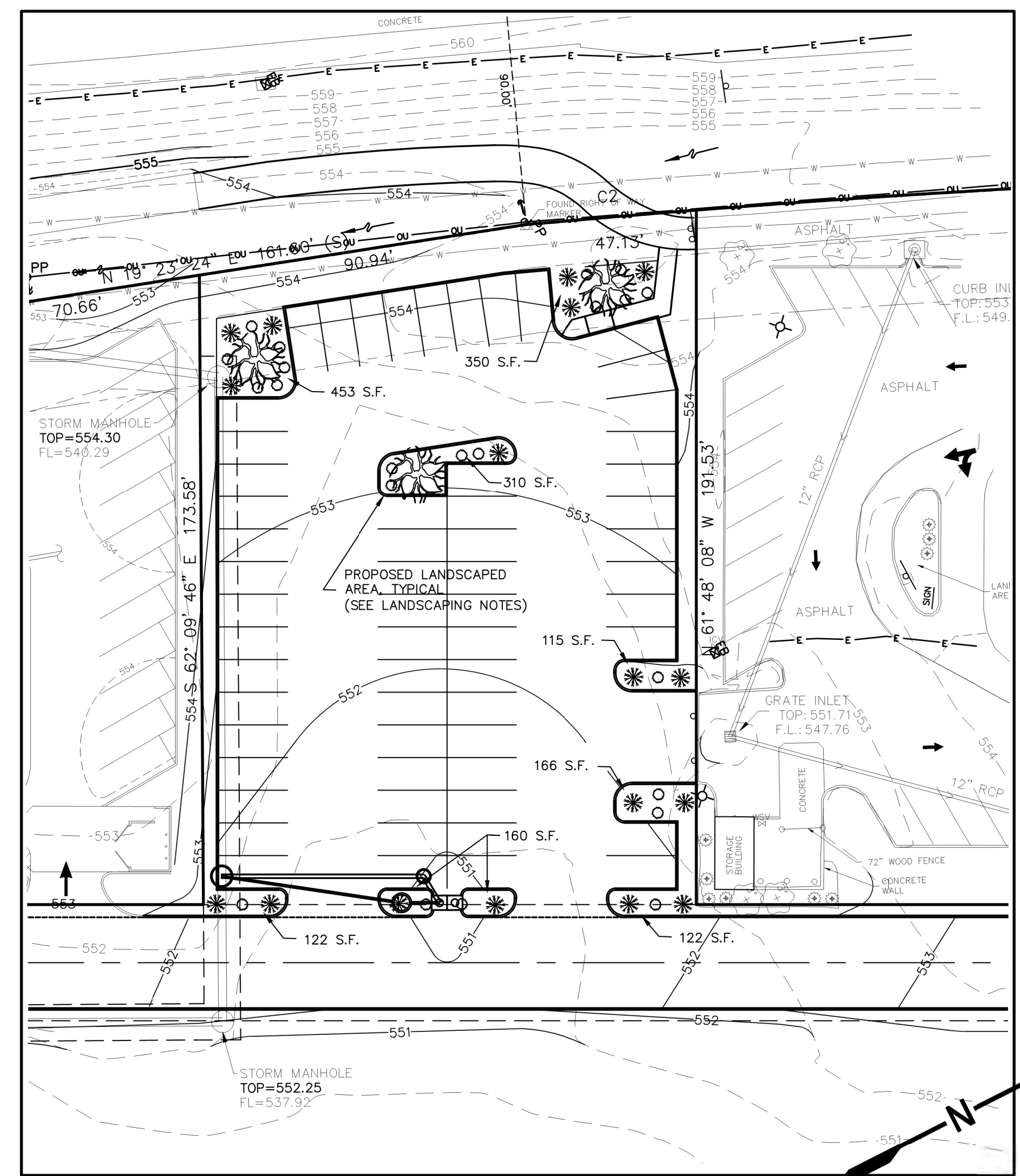
DUCKETT CREEK SANITARY DISTRICT (DCSD) NOTES:

- EXISTING SANITARY SEWER SERVICE SHALL NOT BE INTERRUPTED.
- CONSTRUCTION OF SANITARY SEWERS REQUIRES DCSD INSPECTION. CONTACT THE DCSD INSPECTION DEPARTMENT AT 636-441-1244 TO SCHEDULE INSPECTION. FORTY-EIGHT (48) HOUR ADVANCE NOTICE IS REQUIRED.



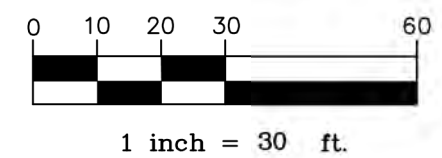
SITE DETAIL - WALK CONNECTION TO TRAIL

SCALE: 1" = 10'



LANDSCAPE PLAN

SCALE: 1" = 30'



LANDSCAPING CALCS / NOTES

A MINIMUM OF 6% OF INTERIOR PARKING LOT SHALL BE LANDSCAPED.
 INTERIOR AREA OF PARKING LOT DEFINED AS # OF PARKING SPACES X 270 S.F.
 # OF PARKING SPACES PROPOSED = 60
 INTERIOR AREA = 60 X 270 = 16,200 S.F.
 6% OF INTERIOR AREA = 972 S.F. (REQUIRED LANDSCAPED AREA)
 LANDSCAPED AREA PROPOSED: 1,798 S.F.
 (SUMMATION OF LANDSCAPED AREAS SHOWN ON PLAN)

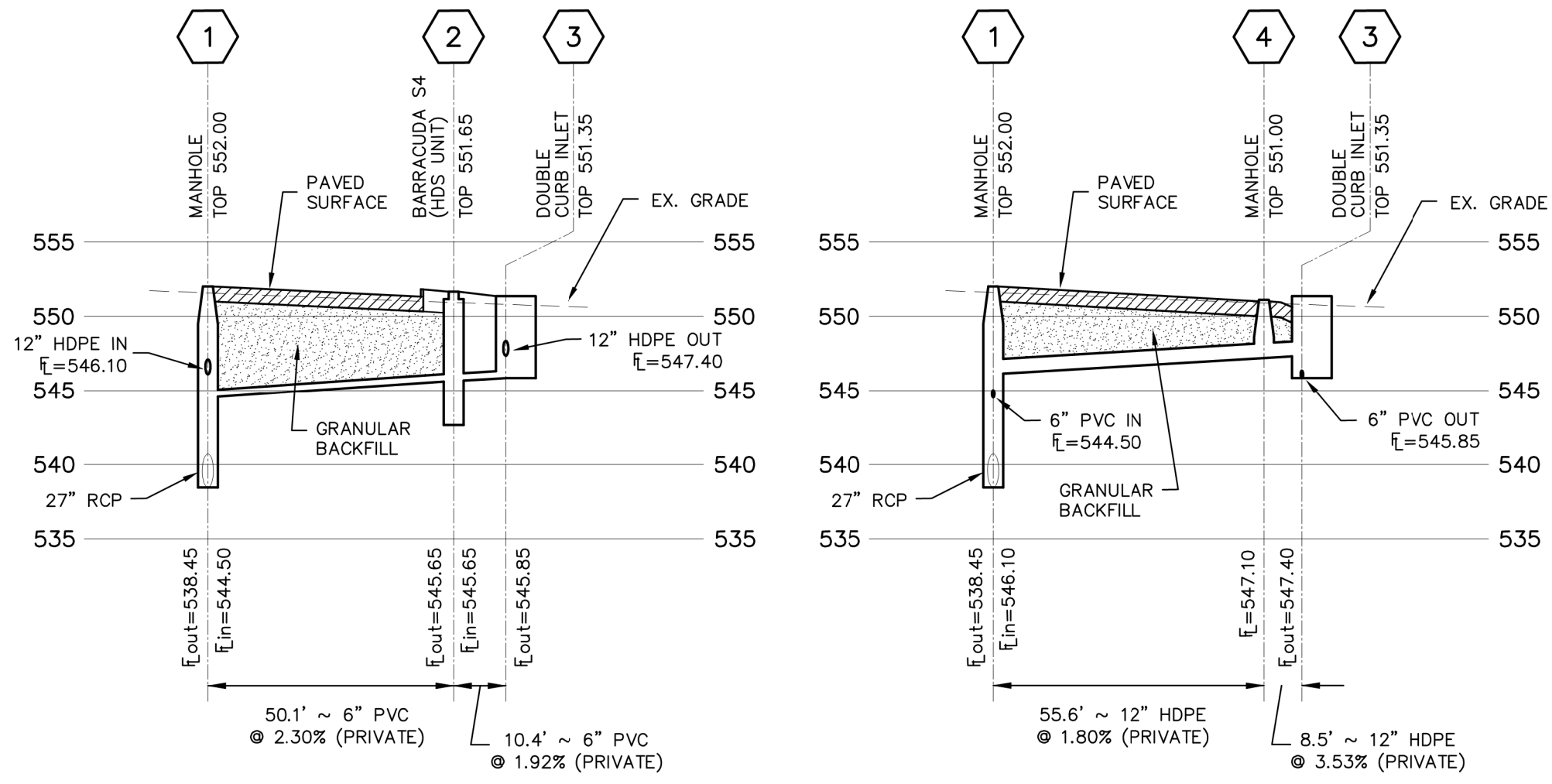
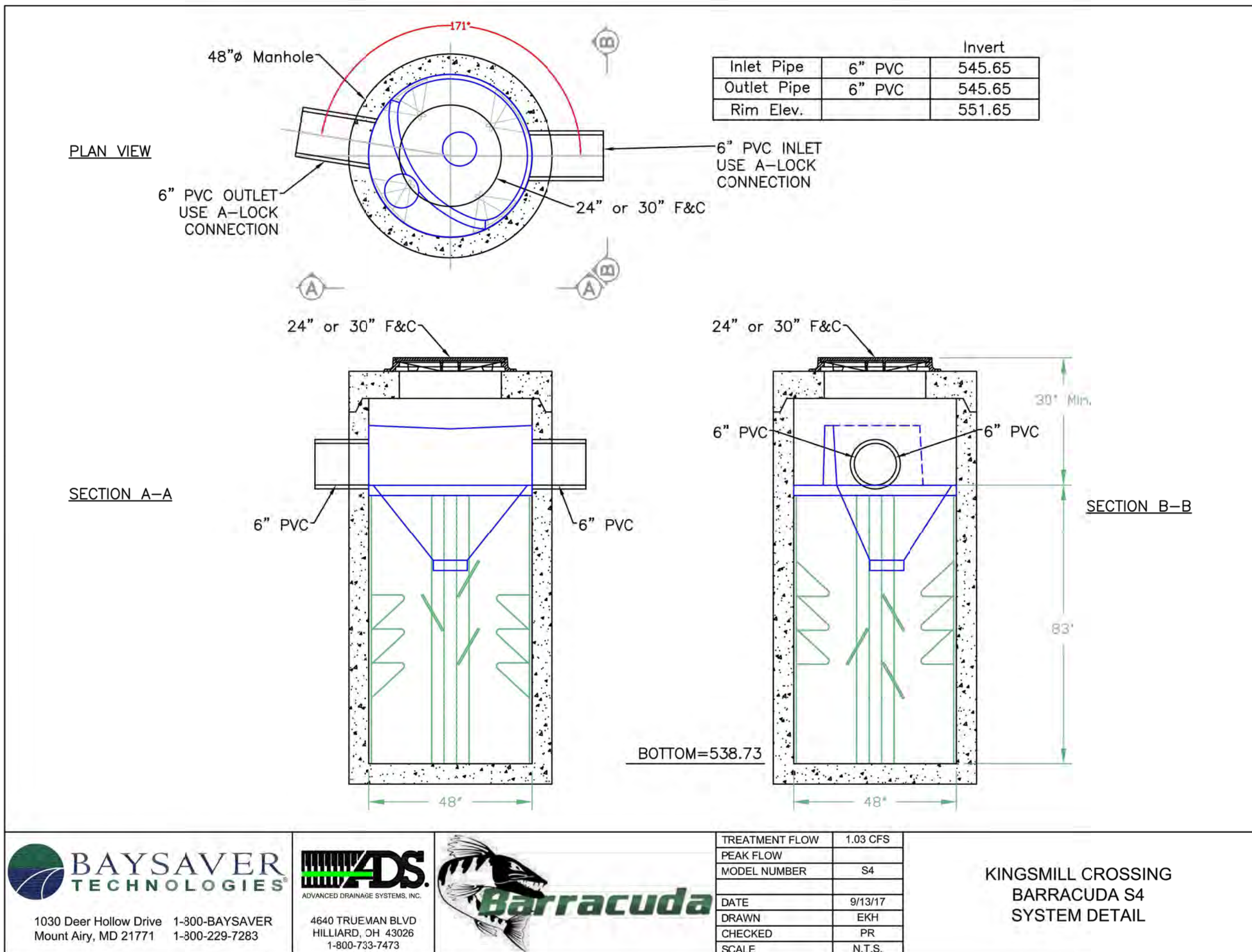
PLANTING INDEX

NAME	SIZE	QUANTITY
RED MAPLE	6'-7' HEIGHT	3
ANDORRA JUNIPER	2-3 GALLON	17
WINTERCREEPER EUONYMUS	2-3 GALLON	22

NOTES:
 ACTUAL PLANT TYPE MAY BE OTHER SIMILAR PLANT FROM THE LIST OF RECOMMENDED PLANTS FROM SECTION 402.250 OF THE CITY CODE.
 ABOVE SIZE AND QUANTITIES ARE APPROXIMATE.

NOTICE TO CONTRACTOR

UNDERGROUND FACILITIES, STRUCTURES AND UTILITIES HAVE BEEN PLOTTED FROM AVAILABLE RECORDS. THEREFORE, THE LOCATIONS OF ANY UNDERGROUND FACILITIES SHOWN HEREON MUST BE CONSIDERED APPROXIMATE. PRIOR TO BEGINNING WORK ON THE SITE, IT IS THE RESPONSIBILITY OF THE CONTRACTOR TO DETERMINE THE EXACT LOCATION OF THESE FACILITIES, ALONG WITH ANY IN EXISTENCE THAT ARE NOT SHOWN; TO VERIFY THEIR LOCATION BOTH HORIZONTALLY AND VERTICALLY (IN ACCORDANCE WITH THE REQUIREMENTS OF THE RESPECTIVE UTILITY/FACILITY OWNER); AND TO VERIFY THAT MINIMUM CLEARANCES AND COVER REQUIREMENTS BETWEEN THE EXISTING FACILITIES AND THE PROPOSED WORK WILL BE MET.



STORM SEWER PROFILES

SCALE: 1"=30' HOR.
1"=10' VER.

BAYSAVER TECHNOLOGIES
 1030 Deer Hollow Drive
 Mount Airy, MD 21771
 1-300-BAYSAVER
 1-300-229-7283

ADS
 ADVANCED DRAINAGE SYSTEMS, INC.
 4640 TRUEMAN BLVD
 HILLIARD, OH 43026
 1-800-733-7473

Barracuda

TREATMENT FLOW	1.03 CFS
PEAK FLOW	
MODEL NUMBER	S4
DATE	9/13/17
DRAWN	EKH
CHECKED	PR
SCALE	N.T.S.

KINGSMILL CROSSING BARRACUDA S4 SYSTEM DETAIL

Vance Engineering, Inc.
 10537 Lackland Road
 St. Louis, MO 63114
 P: 314.427.1800

Highway K Properties L.C.
 14151 Clayton Road
 Town and Country, MO 63017

MISSOURI STATE CERTIFICATE OF AUTHORITY NO. 2003022194

KINGSMILL CROSSING

SITE DETAILS

REVISIONS

08/04/17	CITY & DCSD
09/13/17	HDS UNIT

16078
 06/30/17
 4 / 7
 COPYRIGHT 2017

BEFORE YOU DIG - DRILL - BLAST
 1-800-544-7483
 (TOLL FREE)
 MISSOURI ONE CALL SYSTEM, INC.