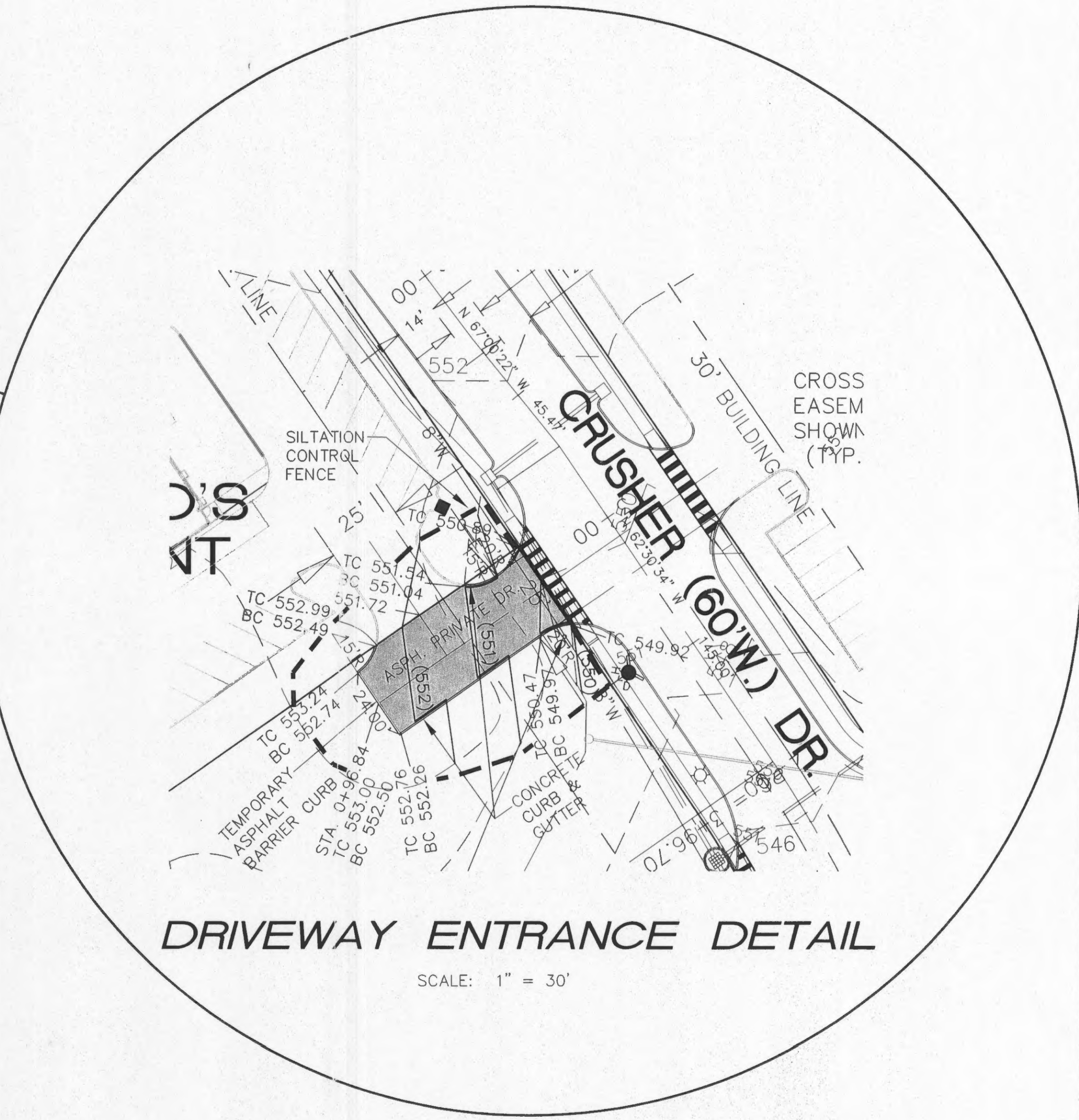
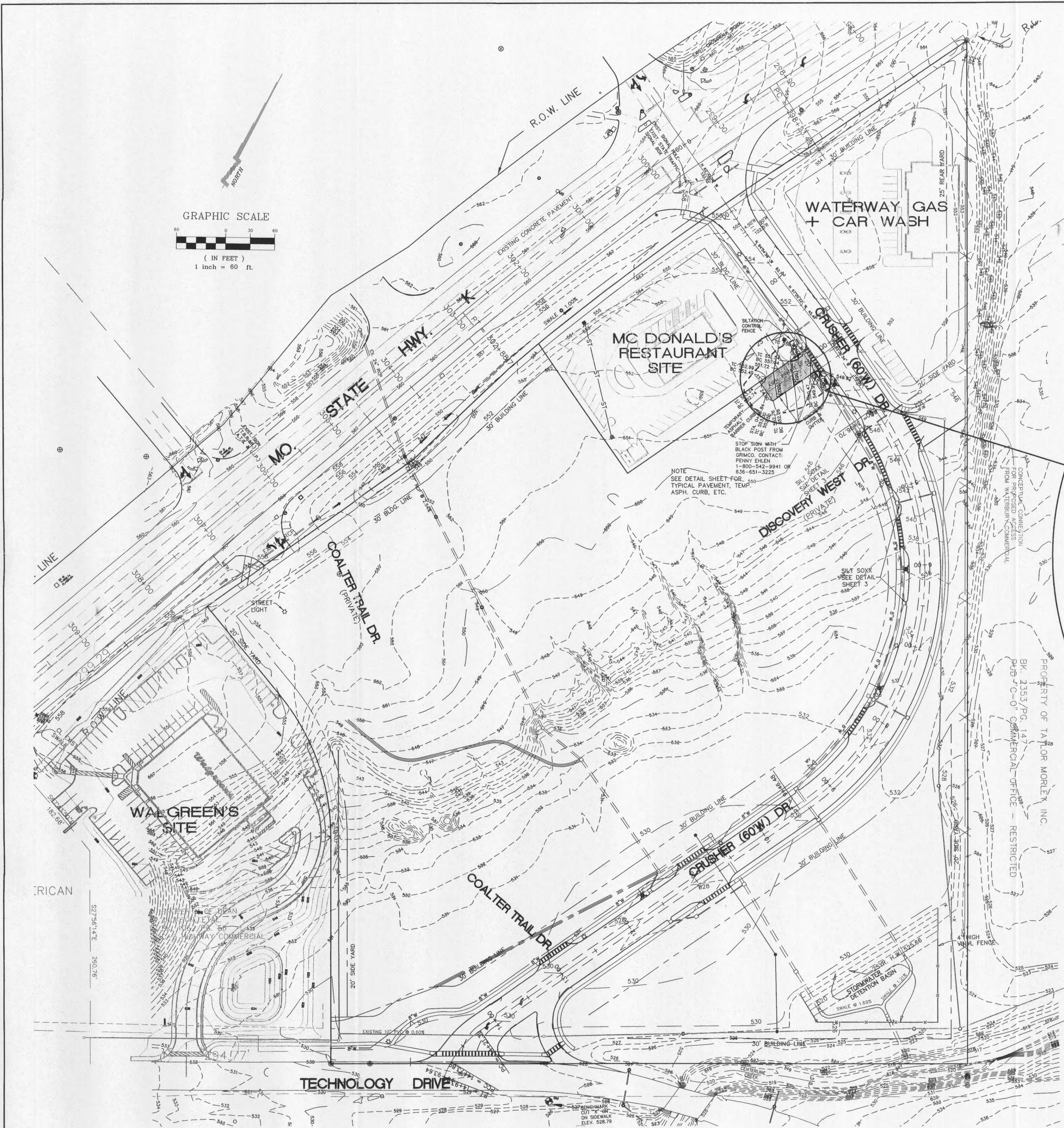
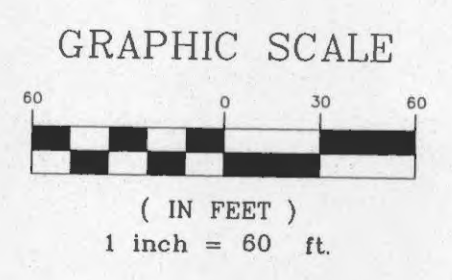


LEGEND

● Sanitary Sewer (Proposed)	C.P. Concrete Pipe
○ Sanitary Sewer (Existing)	R.C.P. Reinforced Concrete Pipe
— Storm Sewer (Proposed)	C.M.P. Corrugated Metal Pipe
— Storm Sewer (Existing)	P.V.C. Polyvinyl Chloride Pipe
— Water Line and size	C.I.P. Cast Iron Pipe
— Tee and Valve	V.C.P. Vitrified Clay Pipe
— Fire Hydrant	E.P. End Pipe
— Cap	F.E. Flared End Section
— Existing Fence Line	C.O. Clean Out
— Existing Tree Line	V.T. Vent Trap
— Existing Contour	M.H. Manhole
(522) Proposed Contour	C.I. Curb Inlet
26 Lot or Building Number	D.C.I. Double Curb Inlet
— Street Sign	A.I. Area Inlet
— Power Pole	D.A.I. Double Area Inlet
— Guy Wire	G.I. Grate Inlet
— Light Standard	C.C. Concrete Collar
— Gas Line	U.I.P. Use in Place
— Electric Line	T.B.R. To Be Removed
— Telephone Line	T.B.R.&R. To Be Removed & Relocated/Replaced
— Gas Valve	S.I.R. Set Iron Rod with Cap
— Gas Meter	C.M. Concrete Monument
— Water Valve	O.I.P. Old Iron Pipe
— Water Meter	O.S.T. Old Stone
— Found Old Iron Pipe	O.I.R. Old Iron Rod



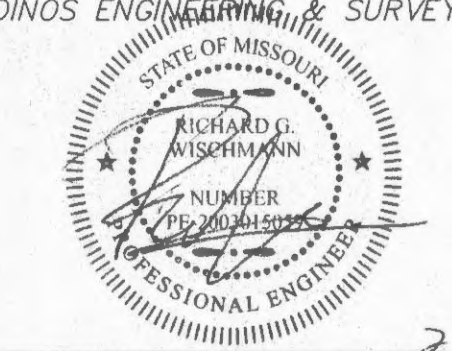
Missouri One Call System, Inc.
 Call Before You Dig!
 1-800-DIG-RITE
 (1-800-344-7483)

All the improvements & facilities and utilities, above ground and underground shown herein were plotted from available information and do not necessarily reflect the actual existence, nonexistence, elevation, size, type, number or location of these or other improvements, facilities, or utilities. The General Contractor and/or owner shall be responsible for verifying the actual location & elevation of all improvements, facilities, & utilities, shown or not shown, and said improvements, facilities, & utilities shall be located in the field prior to any grading, excavation or construction of any improvements. These provisions shall in no way obviate any part from complying with the Underground Facility Safety & Damage Prevention Act, Chapter 319, RSMo.

CALL MISSOURI ONE-CALL, 1-800-DIG-RITE.

ENGINEERS CERTIFICATION:
 The following applies to ALL sheets and documents involved in the preparation of the plans and documents for this project. The responsibility for Professional Engineering liability on this project is limited to the set of plans displaying the signature and an original stamped seal of the Engineer on each sheet. ALL responsibility is disclaimed until ALL review agency approvals are granted; for all other plan sheets issued prior to this issue date; for this set when another set is issued after this date; if the sheets are used individually instead of a set. This applies for ALL sheets and documents involved in this project whether this certification appears on it or not. Copyright 2003. All Rights Reserved.

ZAVRADINOS & POLK, INC. DBA
 ZAVRADINOS ENGINEERING & SURVEYING



RICHARD G. WISCHMANN PE-2003015059 DATE