

SEDIMENT AND EROSION CONTROL

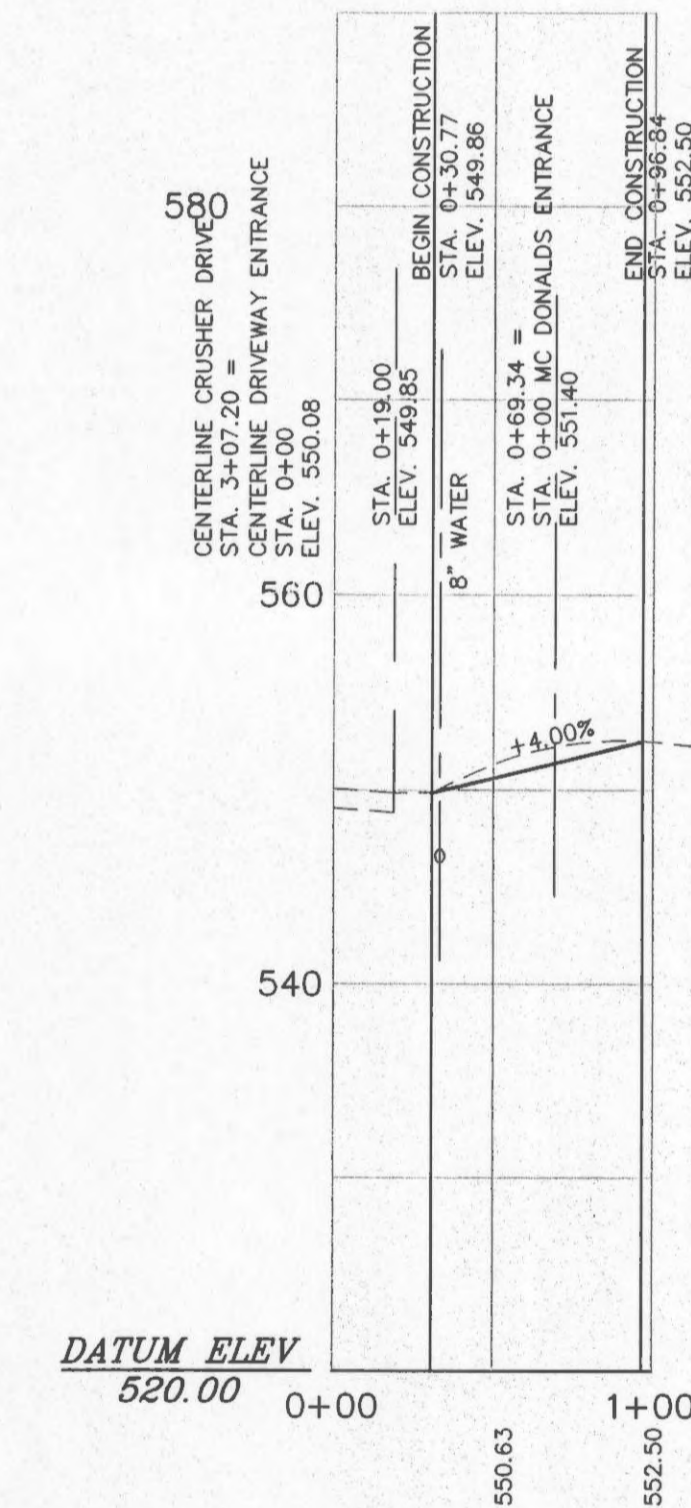
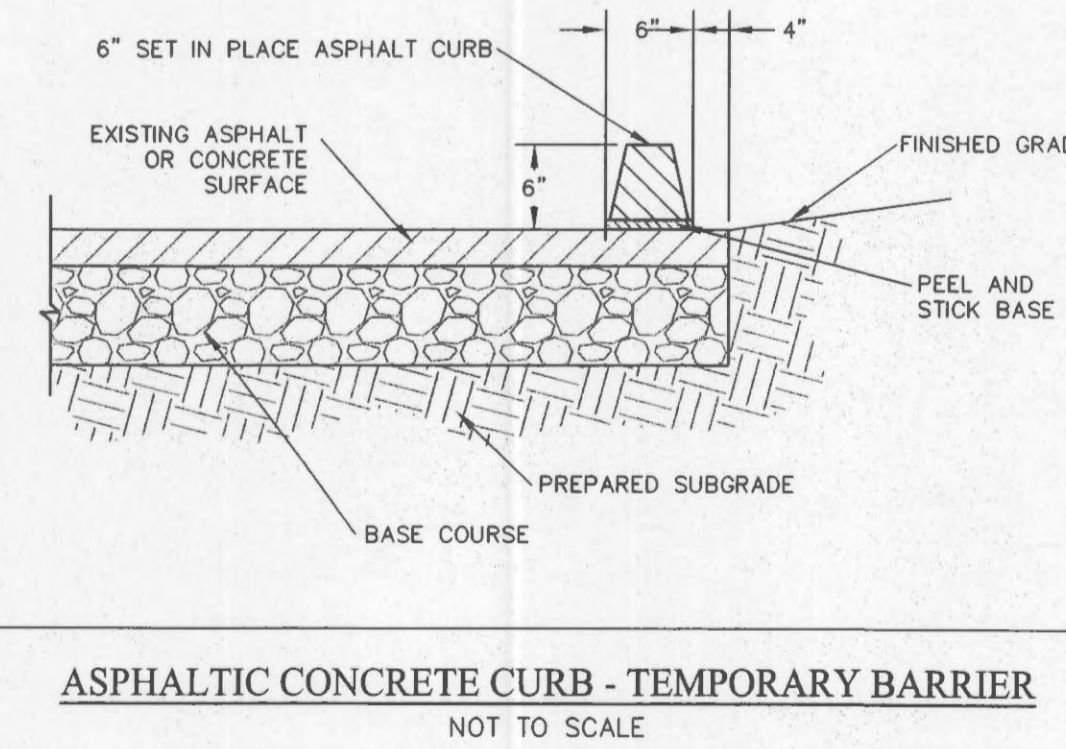
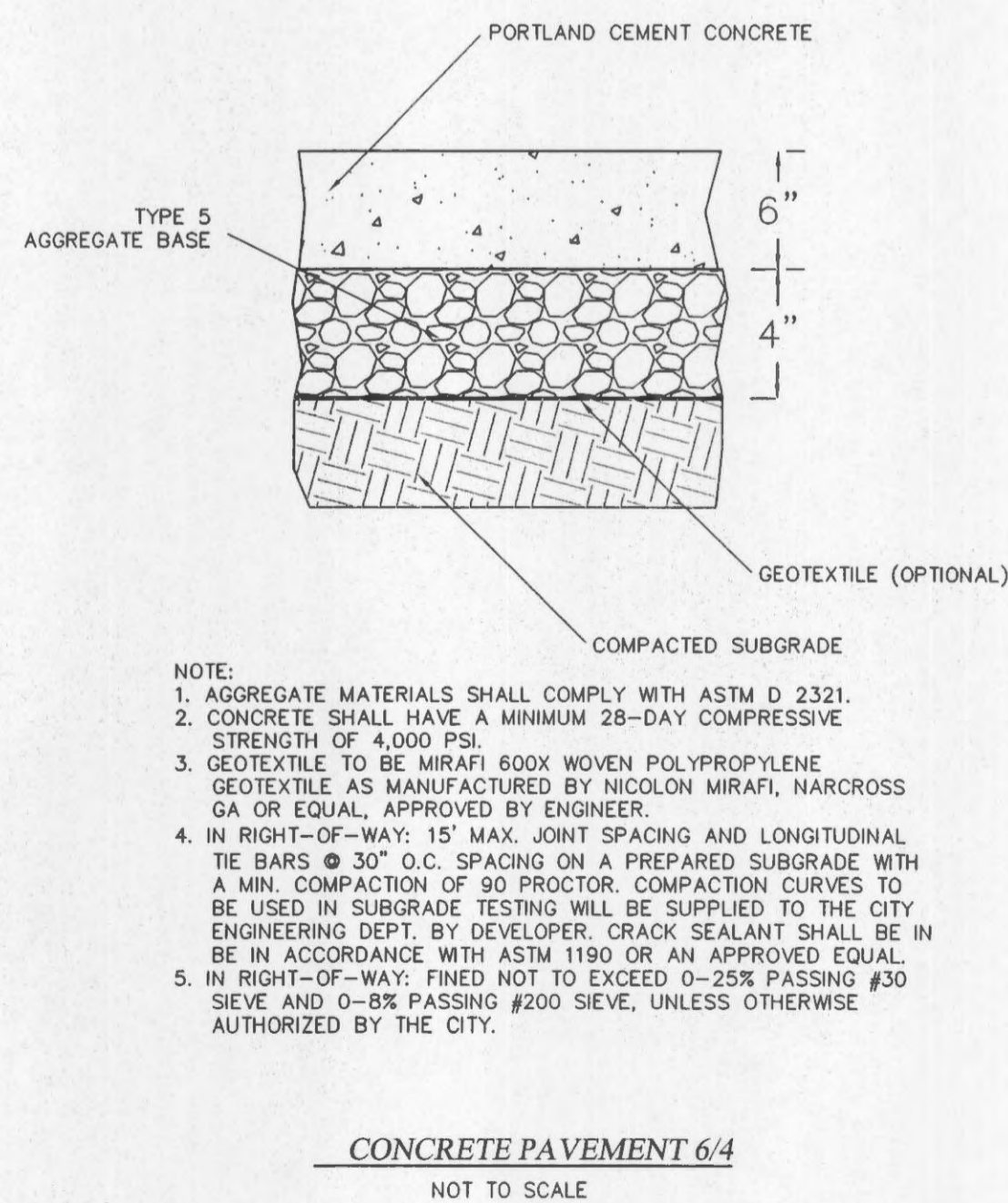
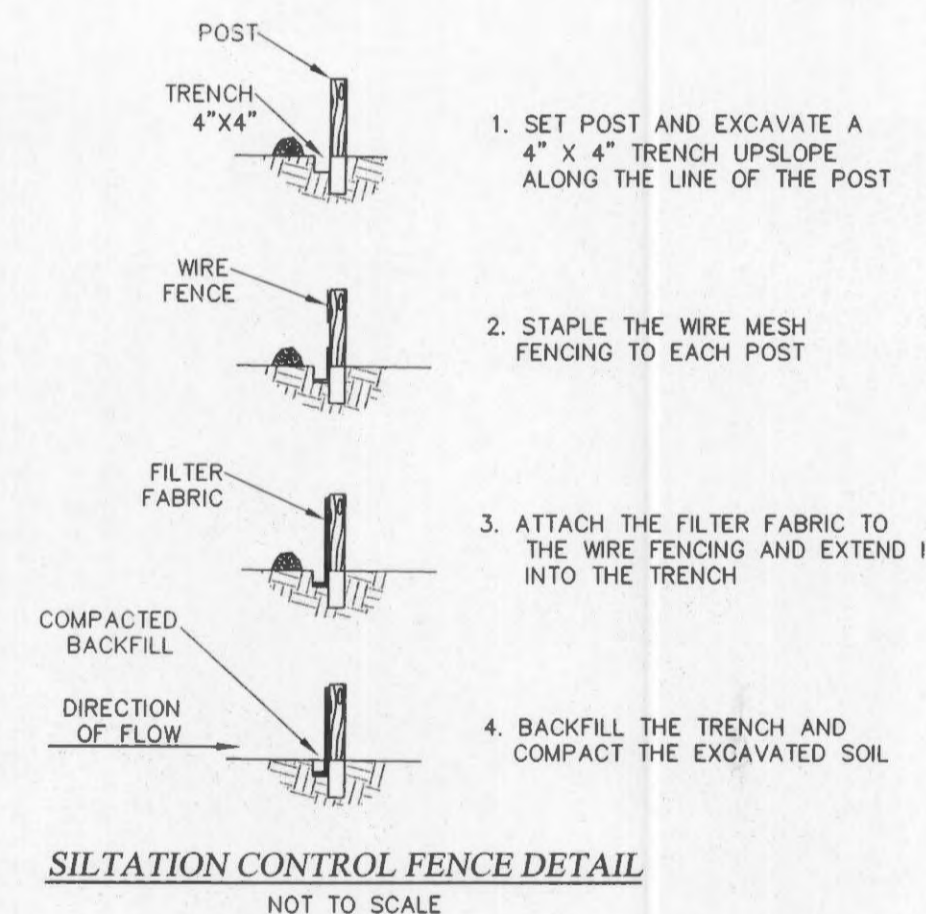
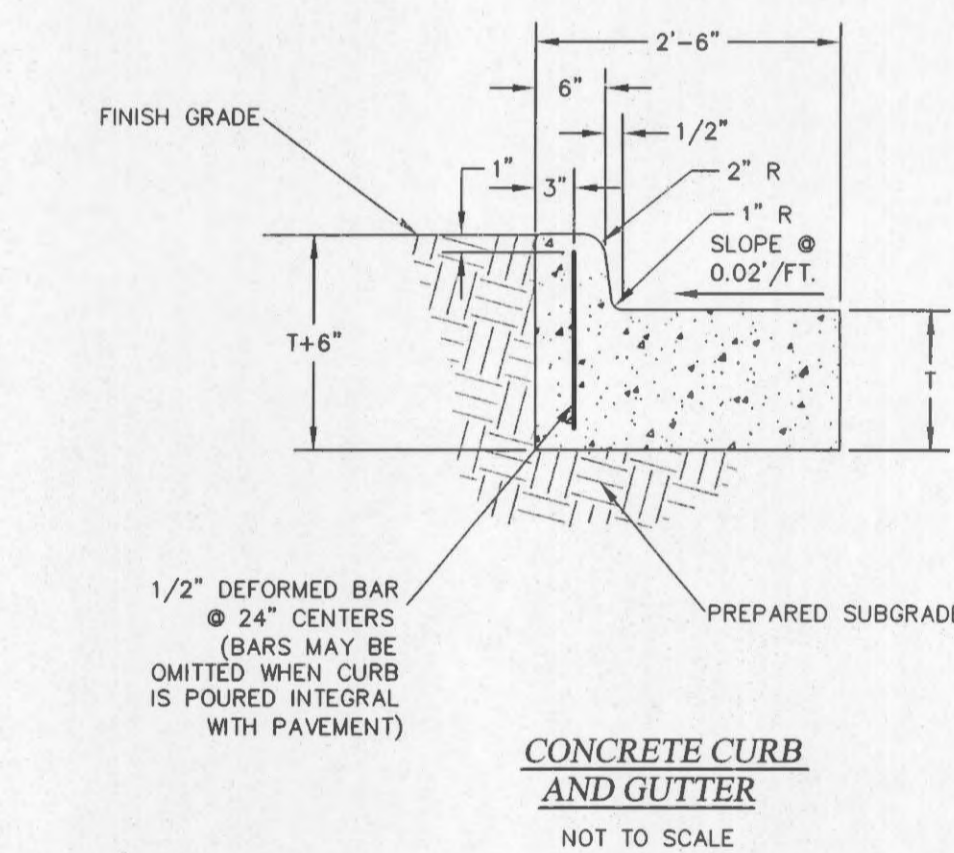
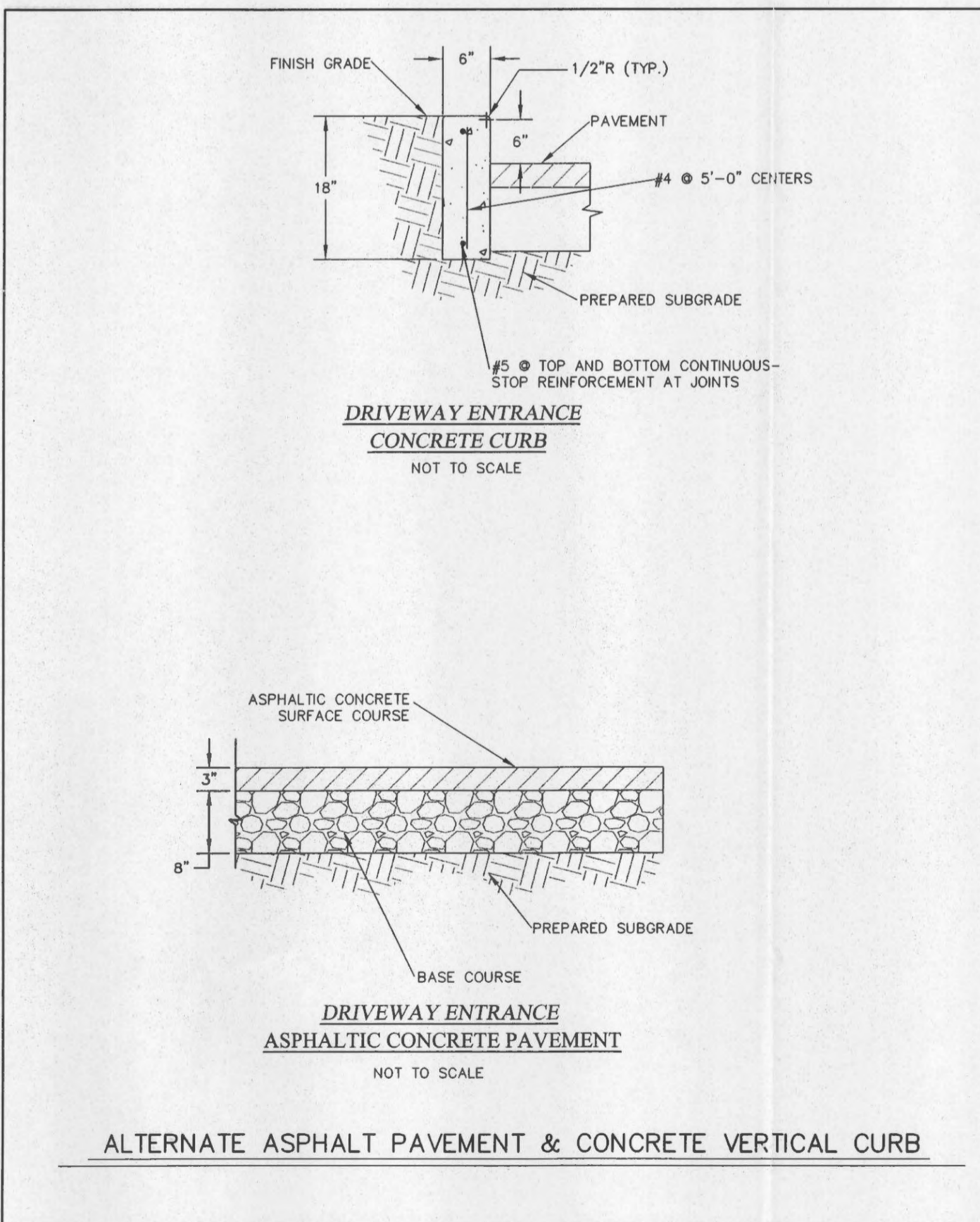
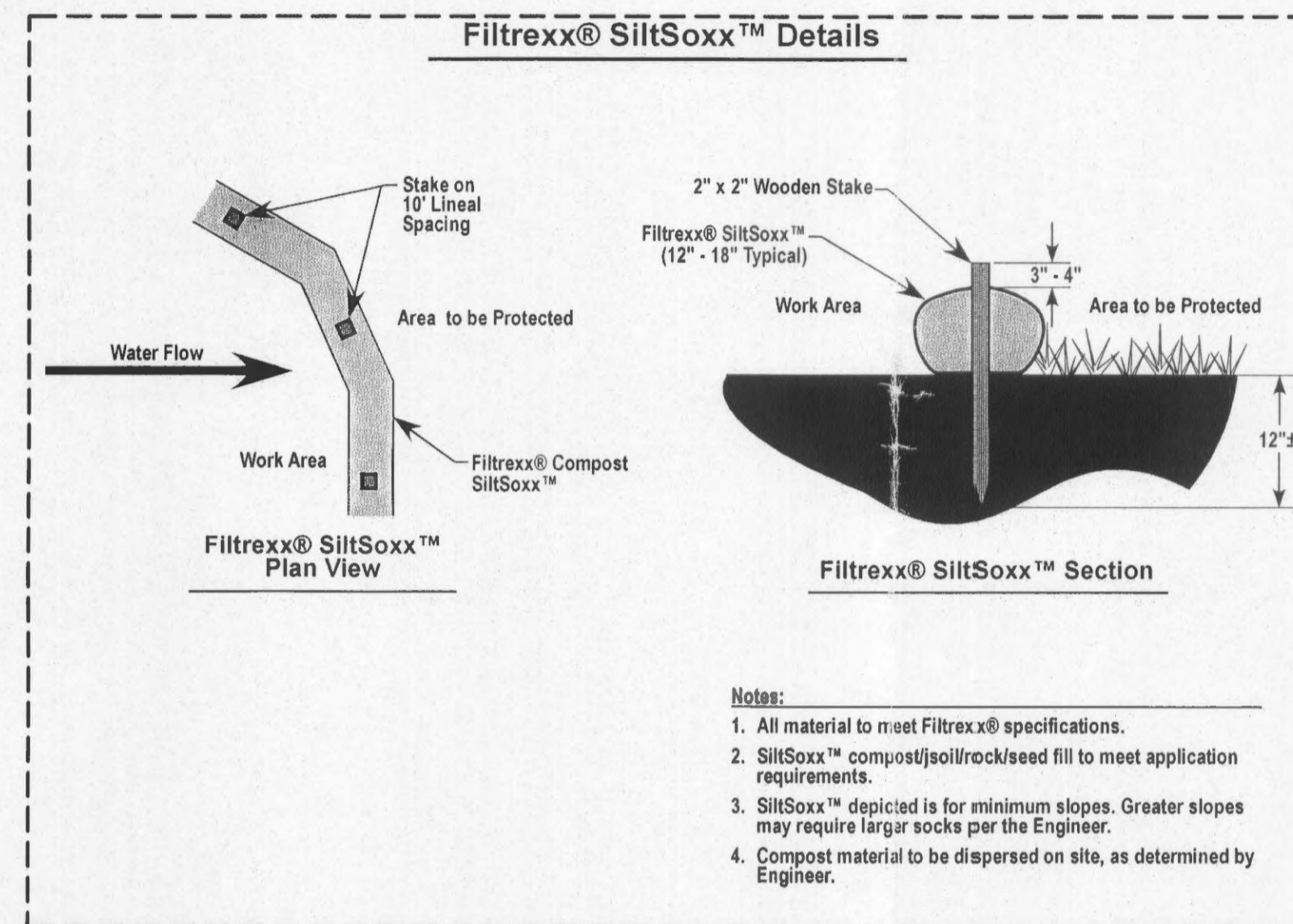
- Sediment and erosion control plans for sites that exceed 20,000 square feet of grading shall provide for sediment or debris basins, silt traps or filters, staked straw boles and/or other approved measures to remove sediment from runoff waters. The design is to be approved by the city engineer or his designee. Temporary siltation control measures (structures) shall be maintained until vegetative cover is established at a sufficient density to provide erosion control on the site (refer to appendix "a").
- Where natural vegetation is removed during grading, vegetation shall be re-established in such a density as to prevent erosion. Permanent type grass must be established as soon as possible or during the next seeding period after grading has been completed (refer to appendix "a").
- When grading operations are completed or suspended for more than 30 days, permanent grass must be established at sufficient density to provide erosion control on the site. Between permanent grass seeding periods, temporary cover shall be provided according to the recommendations of the city engineer or his designee (refer to appendix "a"). All finished grades (areas not to be disturbed by future improvement) in excess of 20% slopes (5:1) shall be mulched and tacked at the rate of 100 pounds per 1,000 square feet when seeded.
- Provisions shall be made to accommodate the increased runoff caused by changed soil and surface conditions during and after grading. Unvegetated open channels shall be designed so that gradients result in velocities of 2 fps (feet per second) or less. Open channels with velocities more than 2 fps and less than 5 fps shall be established in permanent vegetation by use of commercial erosion control blankets or lined with rock riprap or concrete and other suitable materials as approved by the city engineer or his designee. Detention basins, diversions, or other appropriate structures shall be constructed to prevent velocities above 5 fps (see appendices b, c, d, e and f).
- The adjoining ground to development sites (lots) shall be provided with protection from accelerated and increased surface water, silt from erosion, and any other consequence of erosion. Runoff water from developed areas (parking lots, paved sites and buildings) above the area to be developed shall be directed to diversions, detention basins, concrete gutters and/or underground outlet systems. Sufficiently anchored straw boles may be temporarily substituted with the approval of the city engineer or his designee (refer to appendices b, c, d, e and f).
- All lots shall be seeded and mulched at the rates defined in appendix "a" or sodded before an occupancy permit shall be issued except that a temporary occupancy permit may be issued by the building department in cases of undue hardship because of unfavorable ground conditions.

SEEDING NOTES

General:

Seeding Rate: 30# Tall Fescue per acre
 Mulching Rate 100# per 1,000 sq. ft.
 Fertilizer 30# per acre Nitrogen
 30# per acre Phosphate
 30# per acre Potassium
 Lime 600# per acre ENM

- When grading operation is complete, the site will be seeded, fertilized, limed mulched and tacked as per above rate.
- When grading operations are ceased for 14 days or more, all disturbed areas will be seeded to wheat at the rate of 90# per acre.



DRIVEWAY ENTRANCE

SCALE: 1" = 60' HORIZ.
 1" = 10' VERT.

ENGINEER'S CERTIFICATION:

The following applies to ALL sheets and documents involved in the preparation of the plans and documents for this project. The responsibility for Professional Engineering liability on this project is limited to the set of plans displaying the signature and an original stamped seal of the Engineer on each sheet. All responsibility is Disclaimed: until All review agency approvals are granted; for all other plan sheets issued prior to this issue date; for this set when another set is issued after this date; if the sheets are used individually instead of a set. This applies for ALL sheets and documents involved in this project whether this certification appears on it or not. Copyright 2003. All Rights Reserved.

ZAVRADINOS & POLK, INC. DBA
 ZAVRADINOS ENGINEERING & SURVEYING

PROFESSIONAL ENGINEER

2-18-08
 RICHARD G. WISCHMANN PE-2003015059 DATE