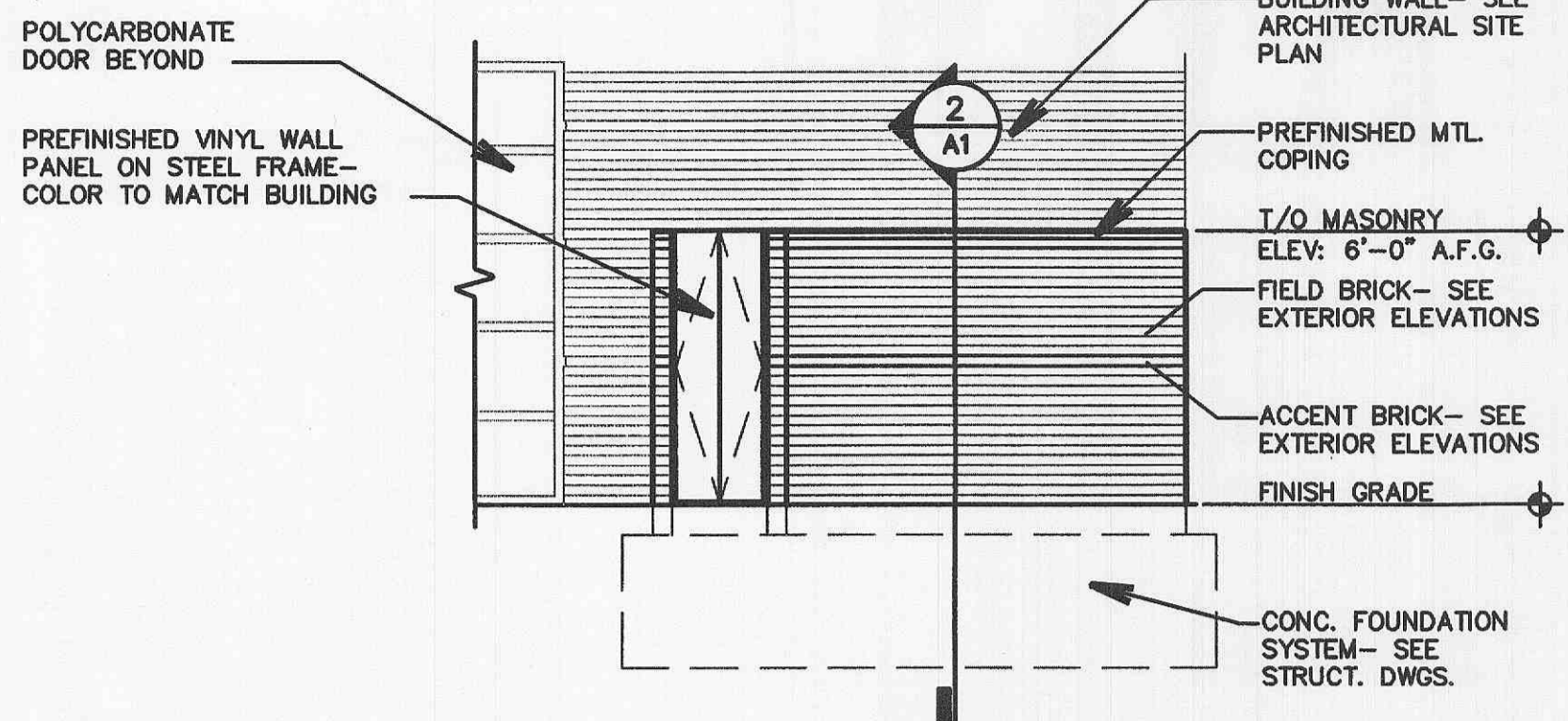
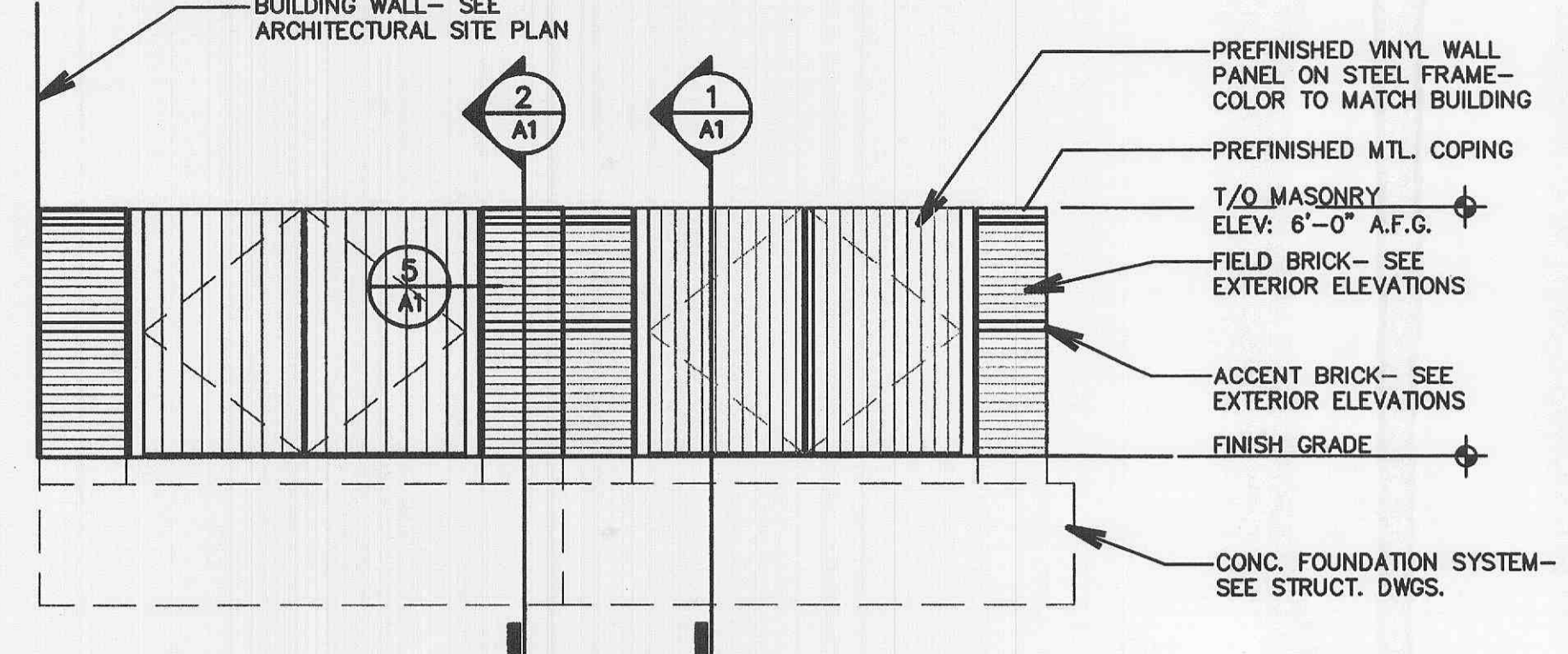


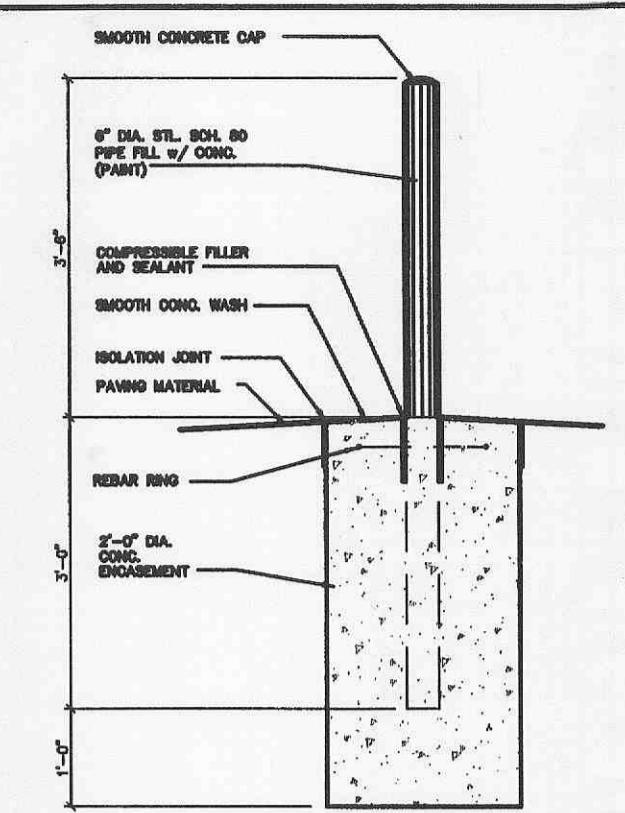
11 ELEVATION
A1 SCALE: 1/4" = 1'-0"



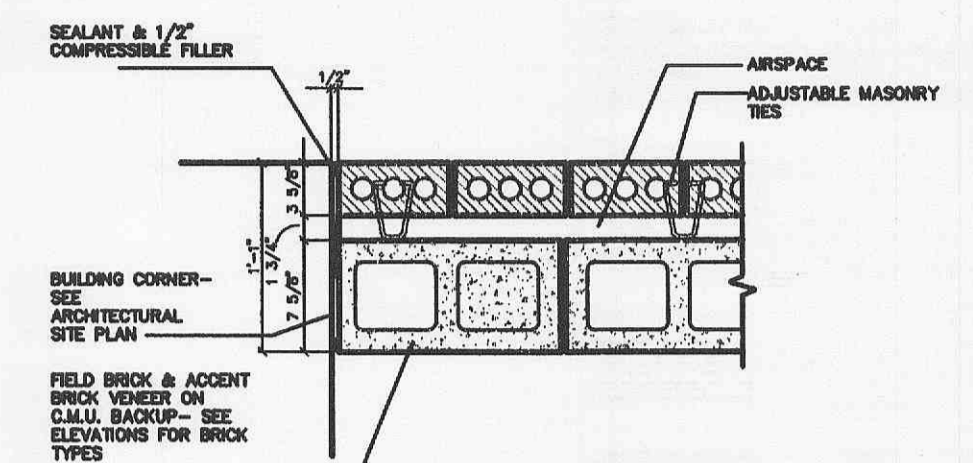
10 ELEVATION
A1 SCALE: 1/4" = 1'-0"



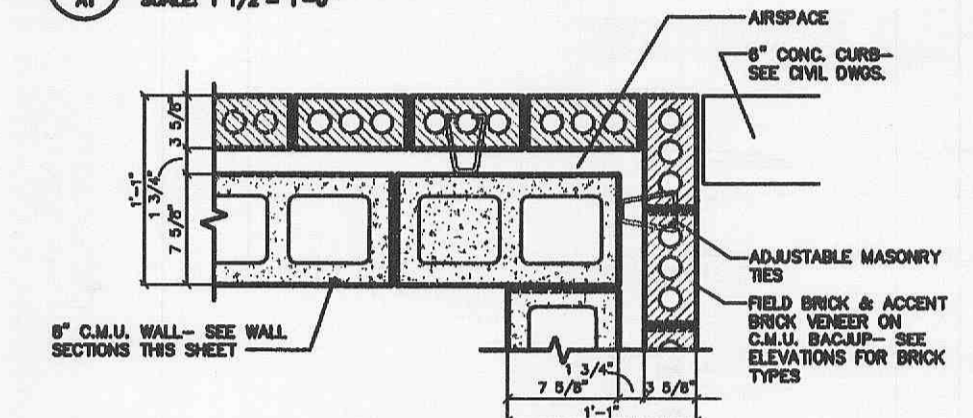
9 ELEVATION
A1 SCALE: 1/4" = 1'-0"



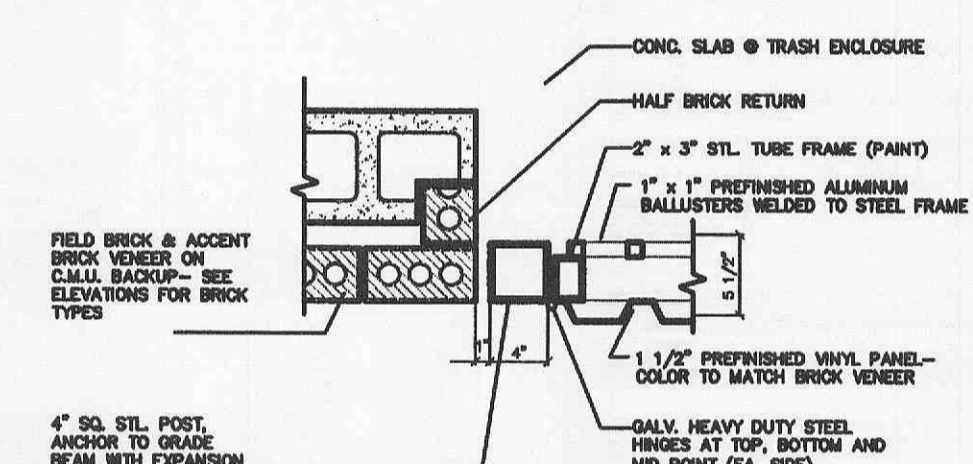
7 EXTERIOR PIPE BOLLARD
A1 SCALE: 1/2" = 1'-0"



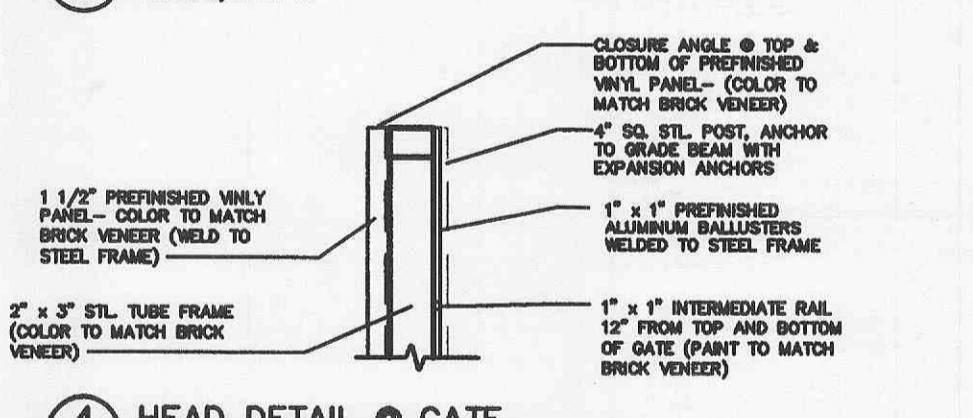
12 JAMB DETAIL @ CORNER
A1 SCALE: 1 1/2" = 1'-0"



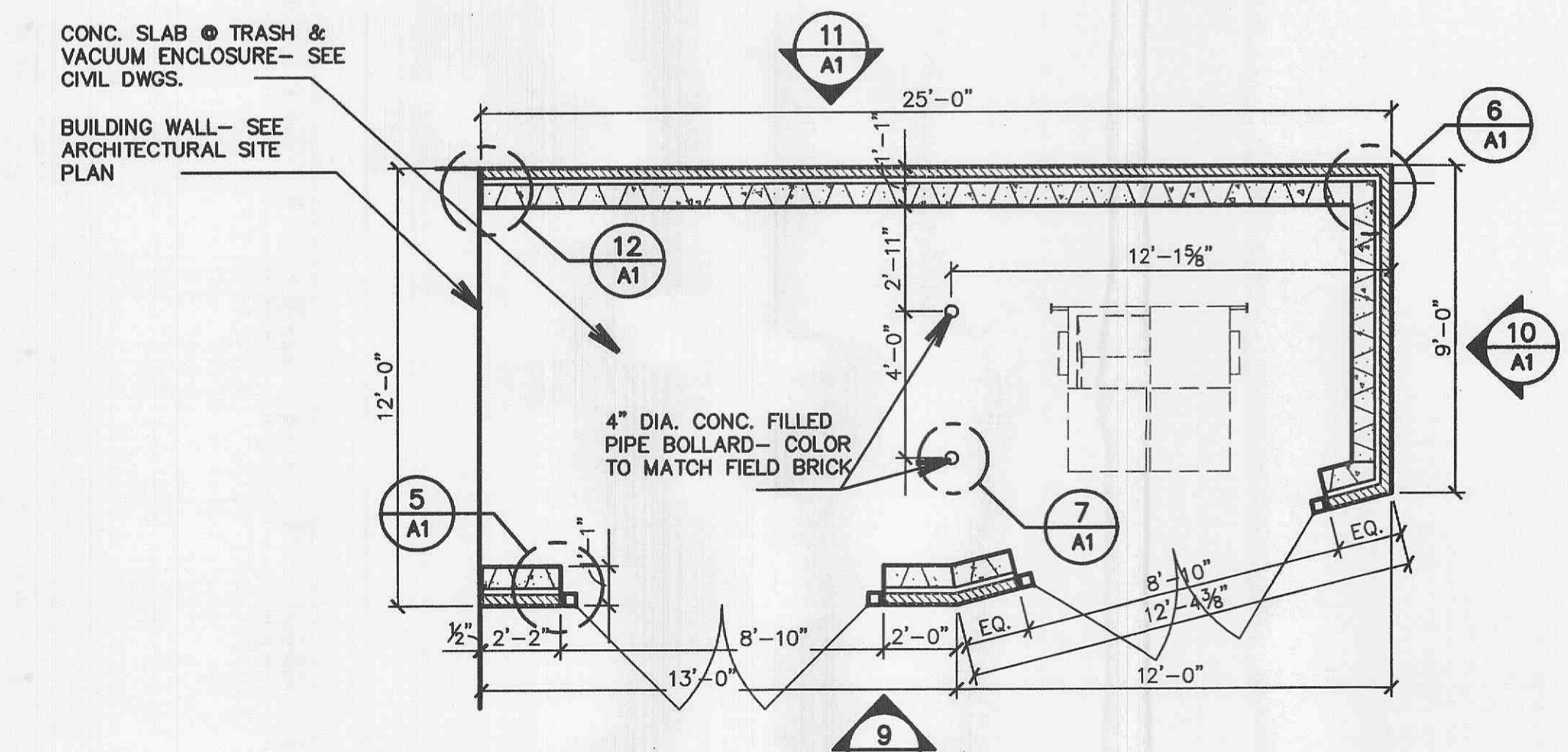
8 JAMB DETAIL @ CORNER
A1 SCALE: 3/4" = 1'-0"



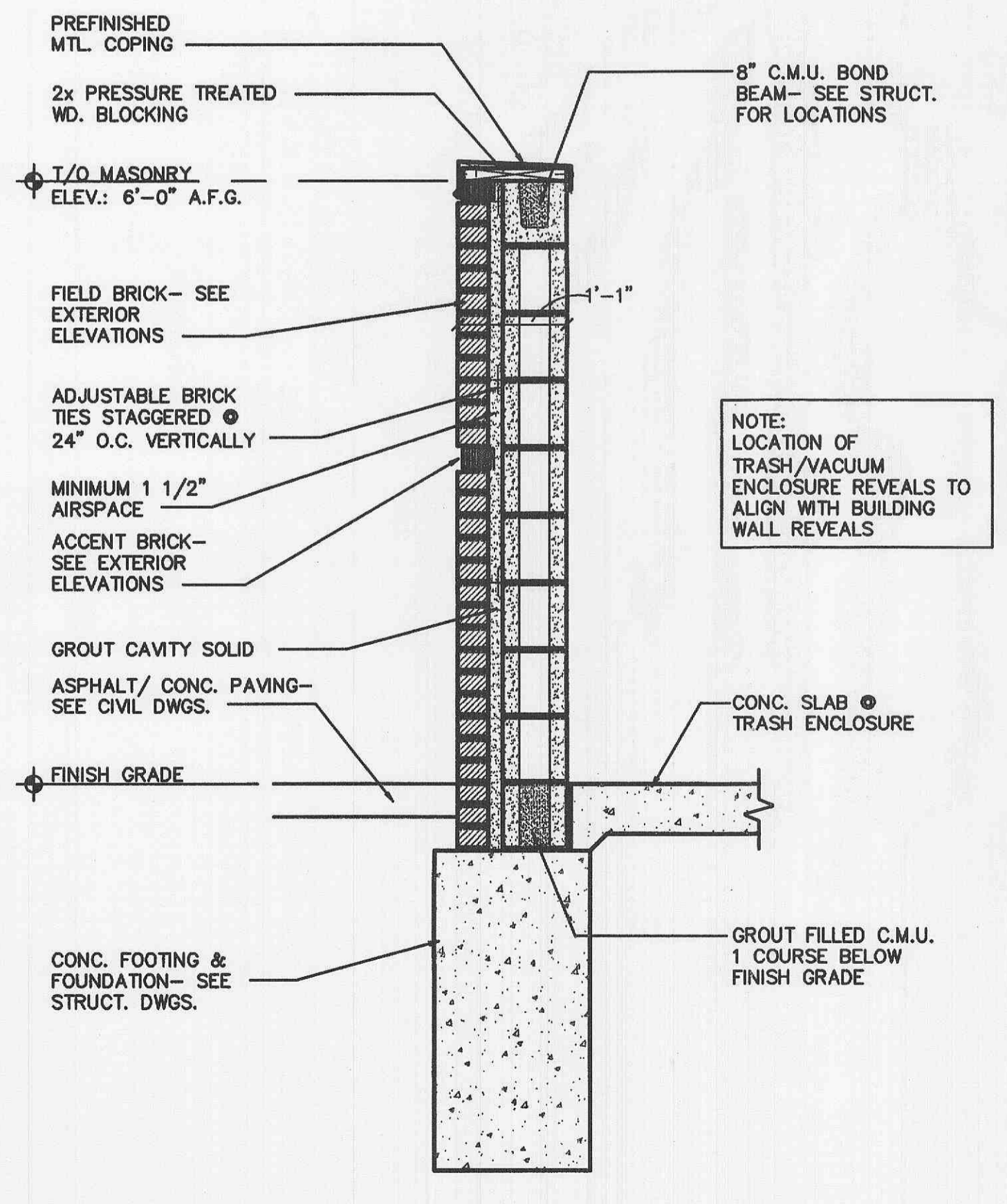
5 JAMB DETAIL @ GATE
A1 SCALE: 3/4" = 1'-0"



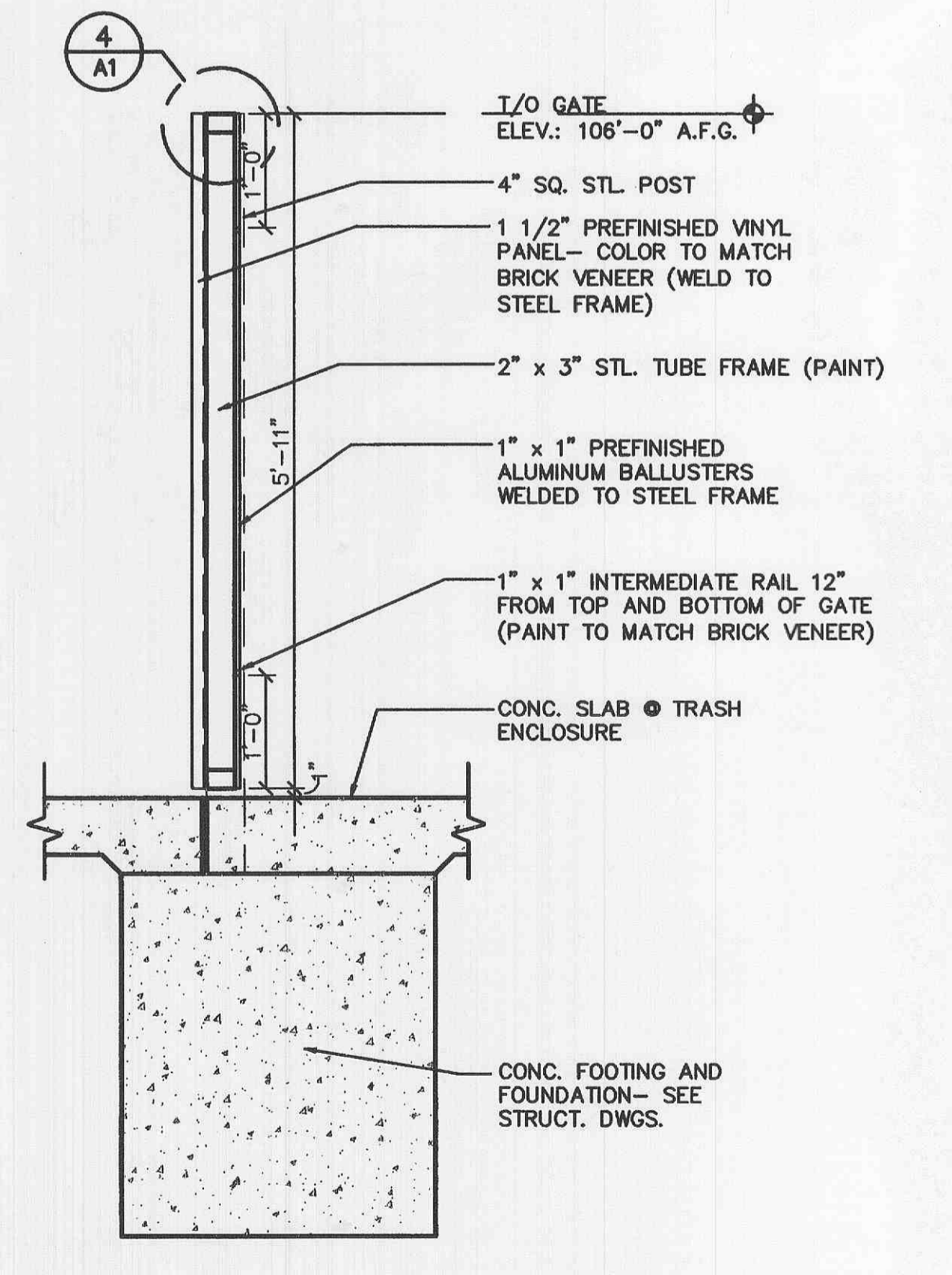
4 HEAD DETAIL @ GATE
A1 SCALE: 3/4" = 1'-0"



8 PLAN @ TRASH/VACUUM ENCLOSURE
A1 SCALE: 1/4" = 1'-0"



2 WALL SECTION @ TRASH ENCLOSURE
A1 SCALE: 3/4" = 1'-0"



1 WALL SECTION @ TRASH ENCLOSURE
A1 SCALE: 3/4" = 1'-0"

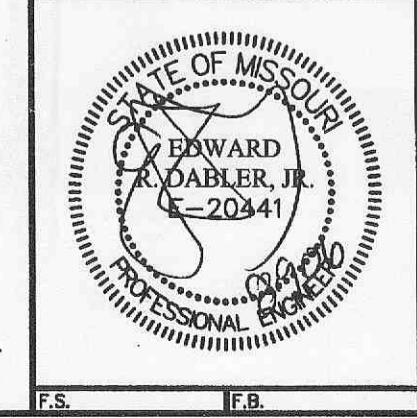
NOTE: LOCATION OF TRASH/VACUUM ENCLOSURE REVEALS TO ALIGN WITH BUILDING WALL REVEALS

The signed and sealed original of this drawing is on file at the offices of The Clayton Engineering Company, Inc. The signed and sealed original is the official document and shall take precedence over any digital version.

NO.	REVISIONS

CONSTRUCTION DETAILS
Kingsmill Crossing - Out Lot

Prepared for: **WATERWAY GAS & WASH**
727 GODDARD AVENUE
CHESTERFIELD, MO. 63005
636-537-1111



the clayton engineering company, inc.
ENGINEERS • SURVEYORS • PLANNERS
11920 WESTLINE INDUSTRIAL DRIVE
ST. LOUIS, MISSOURI 63146
(314) 692-8888 FAX: (314) 692-8888
clayton-engineering.com

Designed	ERD
Drawn	AJM
Checked	ERD
Date	4/17/06
Project Number	05048
Sheet Number	6 of 6

Copyright 2006 Clayton Engineering Co. All Rights Reserved