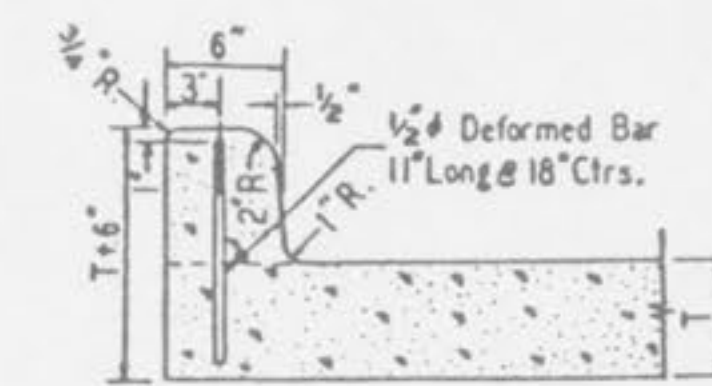


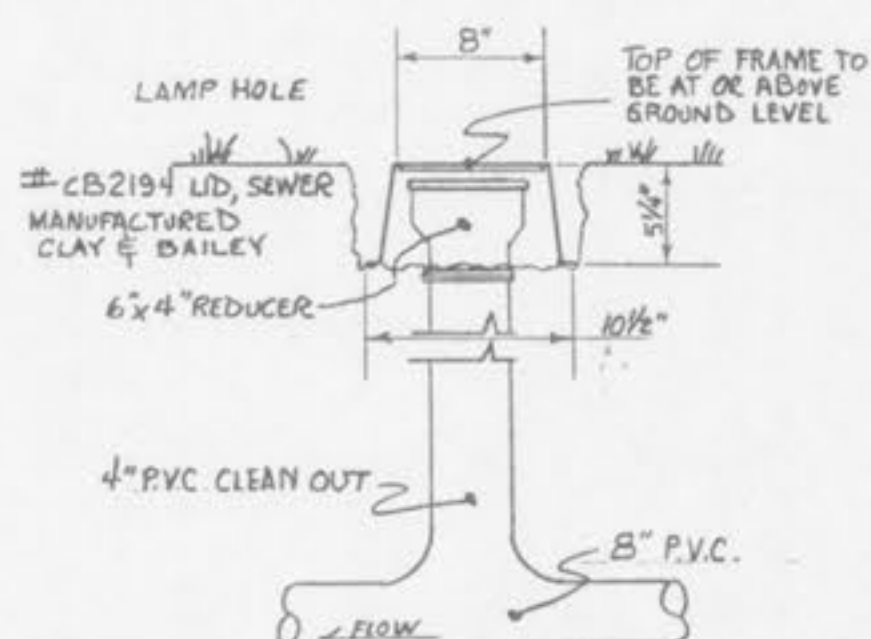
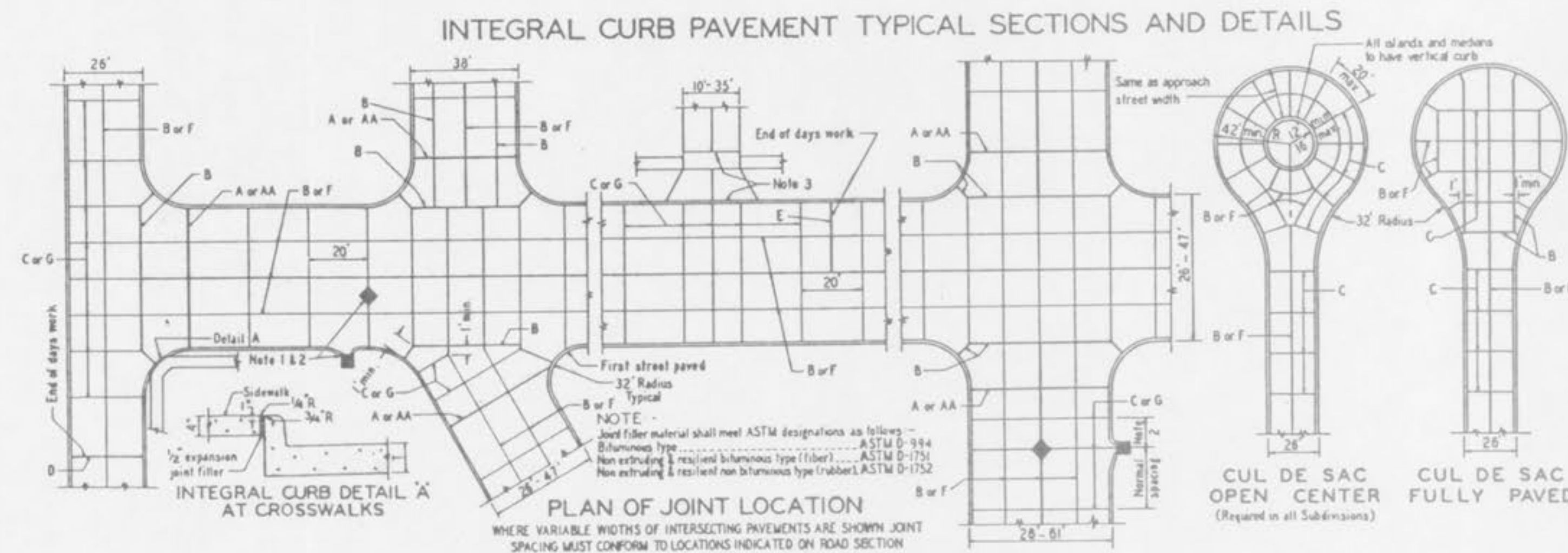
TREE PLANTING DETAIL
NO SCALE



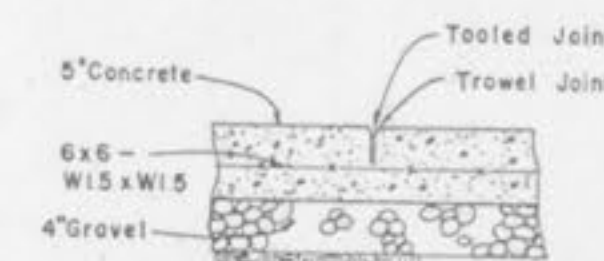
INTEGRAL VERTICAL CURB



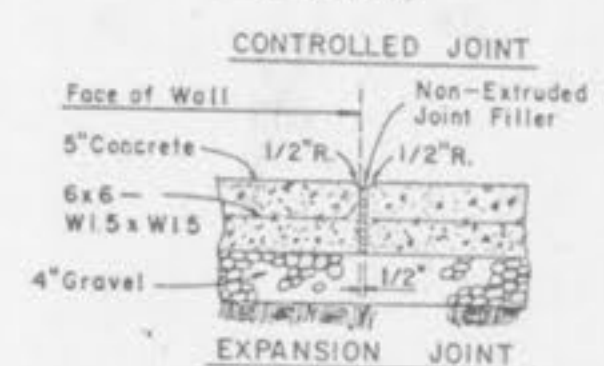
INTEGRAL ROLLED CURB



CLEANOUT DETAIL
(N.T.S.)

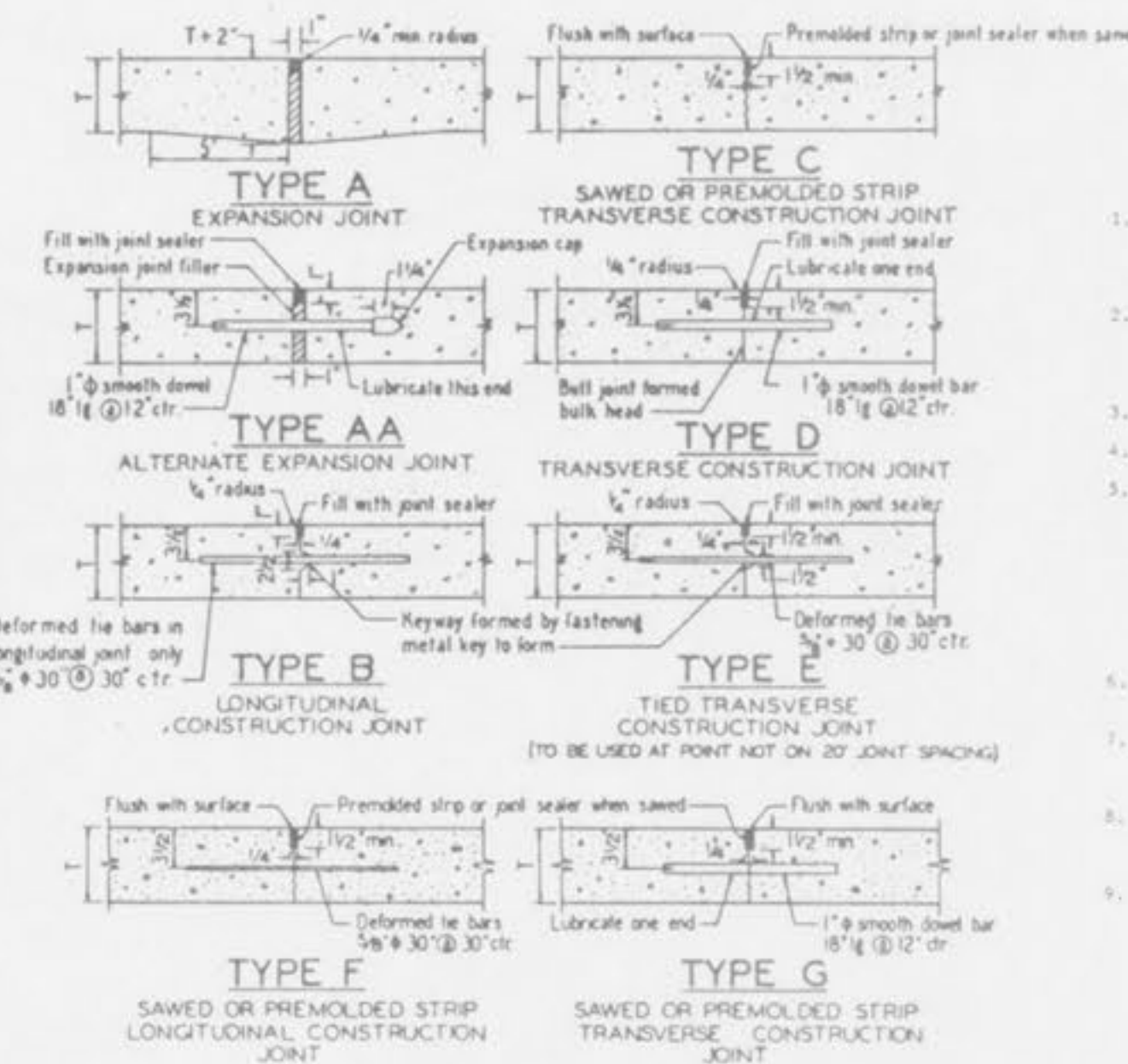


CONTROLLED JOINT
NOTE
Provide Controlled Joint at 4'-0\"/>



EXPANSION JOINT
NOTE
Provide Expansion Joint at 24'-0\"/>

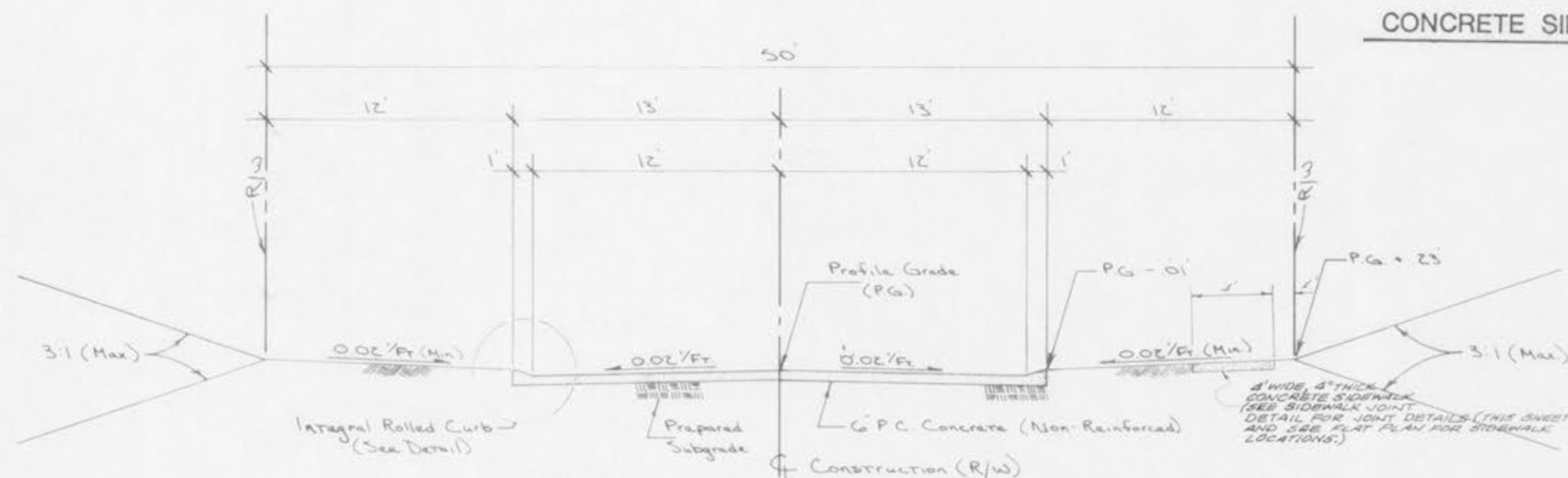
CONCRETE SIDEWALK JOINTS



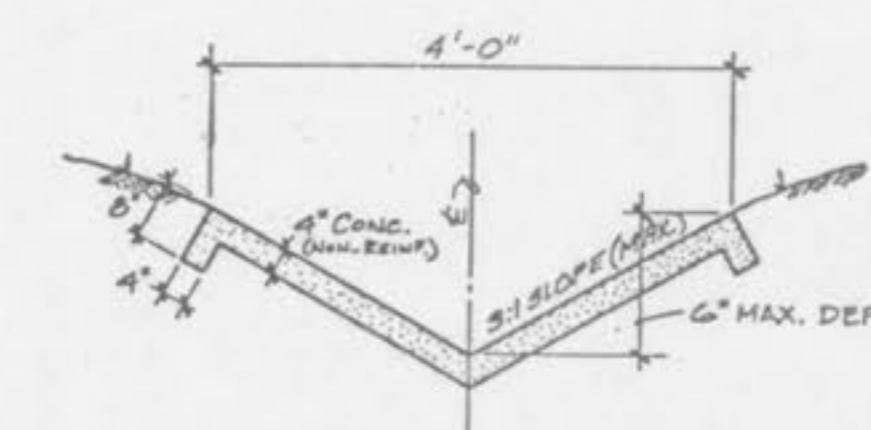
- GENERAL NOTES**
- All catch basins shall be separate from the pavement and curb by expansion joint material extending completely through curb and slab. Machine castings within the pavement (into slab) shall be boxed as shown in the "Sewer Construction Details".
 - When a joint falls within 5 ft. of or contacts base, subbase, or other structures, shorten one or more panels either side of opening or permit joint to fall on road structure and at or between corners of rectangular structures.
 - Driveway configurations are shown in the "Entrance Construction Details".
 - Construction joint and dowel bars may be omitted when curb is poured integral with pavement.
 - Minimum Thickness for Pavement is:

Local or Minor Streets	CONCRETE (T)
Major or Industrial Streets	8"
Arterial or Industrial Streets	6"

 Base material under pavement will be made with 4 inches of Rolled Stone Base.
 - For minor rural or urban and minor subdivision pavements (6" thick concrete), 1/2" diameter deformed tie bars 30" long, 8" apart, shall be used for Type B longitudinal joints.
 - Refer to Exhibit 134 for joint and bar requirements for different street classifications. Note that width and location of each poured portion of the pavement may change the type and location of joint required.
 - Transverse or longitudinal construction joints in sidewalk pavement may be made with groove or tool, if such device has been approved in advance by the St. Louis County Department of Highways & Traffic.
 - The location of the Type B and Type F longitudinal construction joints in above sections may be interchanged for the different widths of construction if approval is obtained.



TYPICAL SECTION
(26\"/>



4\"/>