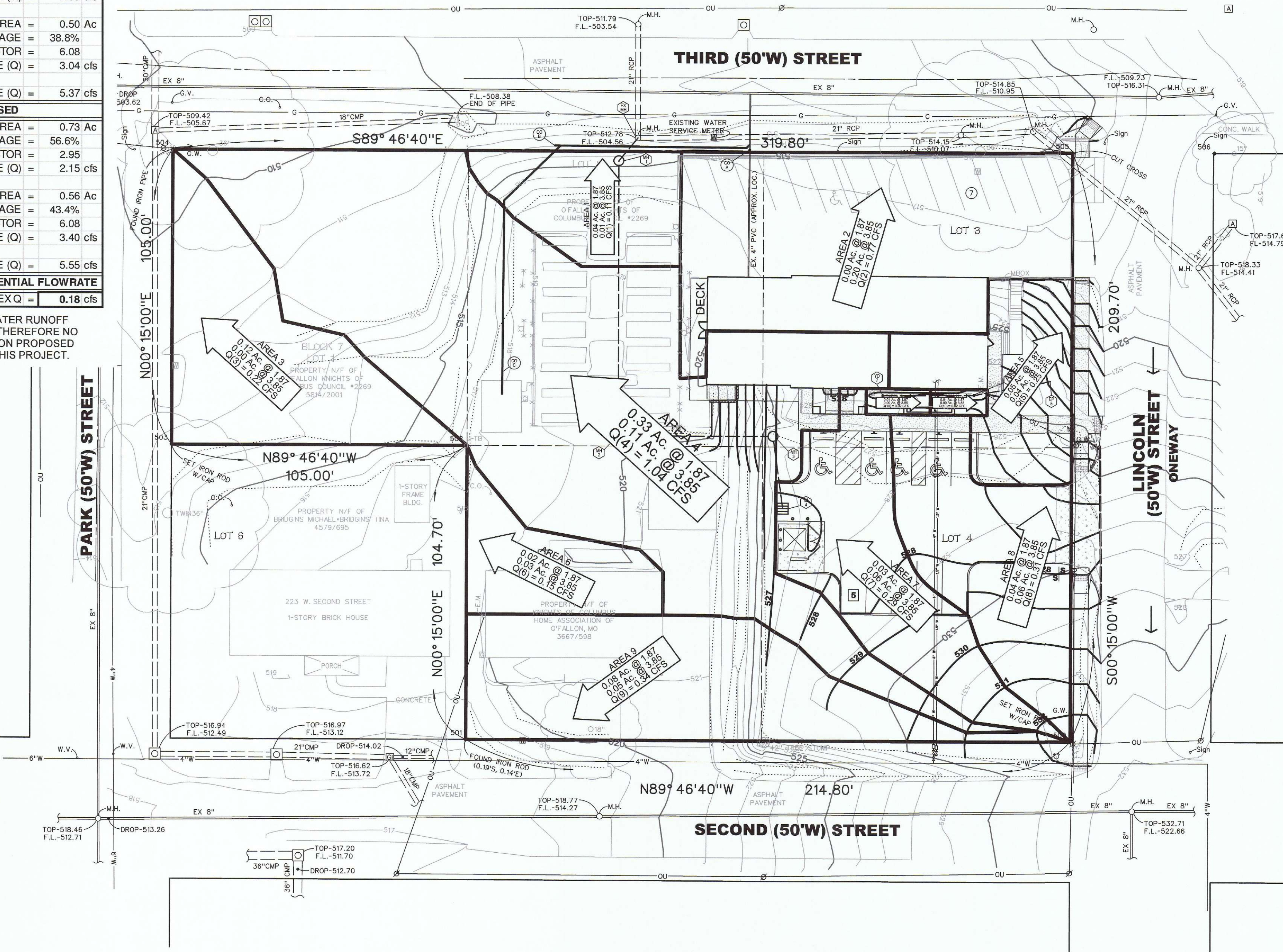


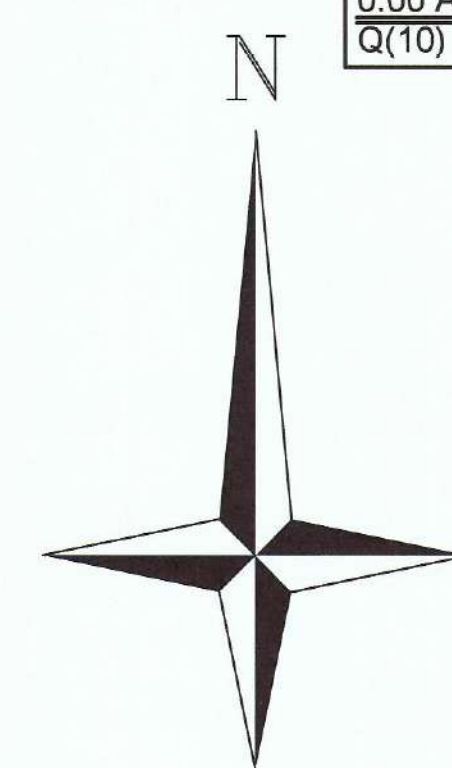
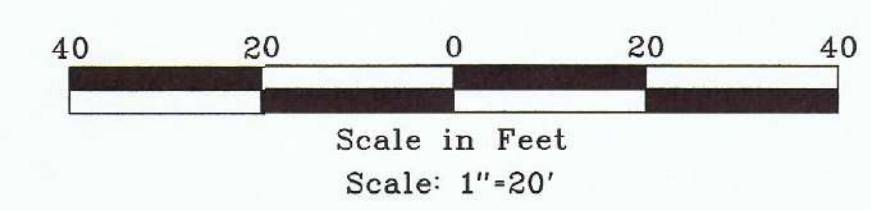
100-YR STORMWATER RUNOFF DIFFERENTIAL CALCULATIONS	
TOTAL DRAINAGE AREA =	1.29 Ac
EXISTING	
PERVIOUS AREA =	0.79 Ac
PERVIOUS PERCENTAGE =	61.2%
100 YR STORM PI FACTOR =	2.95
PERVIOUS FLOWRATE (Q) =	2.33 cfs
IMPERVIOUS AREA =	0.50 Ac
IMPERVIOUS PERCENTAGE =	38.8%
100 YR STORM PI FACTOR =	6.08
IMPERVIOUS FLOWRATE (Q) =	3.04 cfs
FLOWRATE (Q) =	5.37 cfs
PROPOSED	
PERVIOUS AREA =	0.73 Ac
PERVIOUS PERCENTAGE =	56.6%
100 YR STORM PI FACTOR =	2.95
PERVIOUS FLOWRATE (Q) =	2.15 cfs
IMPERVIOUS AREA =	0.56 Ac
IMPERVIOUS PERCENTAGE =	43.4%
100 YR STORM PI FACTOR =	6.08
IMPERVIOUS FLOWRATE (Q) =	3.40 cfs
FLOWRATE (Q) =	5.55 cfs
100-YR STORM DIFFERENTIAL FLOWRATE	
PROP Q - EX Q =	0.18 cfs

NOTE: 100-YR STORM WATER RUNOFF DIFFERENTIAL < 1 CFS. THEREFORE NO STORM WATER DETENTION PROPOSED WITHIN THE SCOPE OF THIS PROJECT.



AREA 1	TOTAL ACREAGE = 0.05 ACRES IMPERVIOUS ACREAGE = 0.01 ACRES 0.04 Ac. @ 1.87 0.01 Ac. @ 3.85 Q(1) = 0.11 CFS
AREA 2	TOTAL ACREAGE = 0.20 ACRES IMPERVIOUS ACREAGE = 0.20 ACRES 0.00 Ac. @ 1.87 0.20 Ac. @ 3.85 Q(2) = 0.77 CFS
AREA 3	TOTAL ACREAGE = 0.12 ACRES IMPERVIOUS ACREAGE = 0.00 ACRES 0.12 Ac. @ 1.87 0.00 Ac. @ 3.85 Q(3) = 0.22 CFS
AREA 4	TOTAL ACREAGE = 0.44 ACRES IMPERVIOUS ACREAGE = 0.11 ACRES 0.33 Ac. @ 1.87 0.11 Ac. @ 3.85 Q(4) = 1.04 CFS
AREA 5	TOTAL ACREAGE = 0.09 ACRES IMPERVIOUS ACREAGE = 0.04 ACRES 0.05 Ac. @ 1.87 0.04 Ac. @ 3.85 Q(5) = 0.25 CFS
AREA 6	TOTAL ACREAGE = 0.05 ACRES IMPERVIOUS ACREAGE = 0.03 ACRES 0.02 Ac. @ 1.87 0.03 Ac. @ 3.85 Q(6) = 0.15 CFS
AREA 7	TOTAL ACREAGE = 0.09 ACRES IMPERVIOUS ACREAGE = 0.06 ACRES 0.03 Ac. @ 1.87 0.06 Ac. @ 3.85 Q(7) = 0.29 CFS
AREA 8	TOTAL ACREAGE = 0.10 ACRES IMPERVIOUS ACREAGE = 0.06 ACRES 0.04 Ac. @ 1.87 0.06 Ac. @ 3.85 Q(8) = 0.31 CFS
AREA 9	TOTAL ACREAGE = 0.13 ACRES IMPERVIOUS ACREAGE = 0.05 ACRES 0.08 Ac. @ 1.87 0.05 Ac. @ 3.85 Q(9) = 0.34 CFS
AREA 10	TOTAL ACREAGE = 0.01 ACRES IMPERVIOUS ACREAGE = 0.00 ACRES 0.01 Ac. @ 1.87 0.00 Ac. @ 3.85 Q(10) = 0.02 CFS
AREA 11	TOTAL ACREAGE = 0.01 ACRES IMPERVIOUS ACREAGE = 0.00 ACRES 0.01 Ac. @ 1.87 0.00 Ac. @ 3.85 Q(10) = 0.02 CFS

NOTE: THIS SHEET TO BE USED FOR DRAINAGE AREA PURPOSES ONLY. NOT TO BE USED AS CONSTRUCTION PLANS.



REVISED
#1 - 06 /12 /18
#2 - 08 /09 /18
#3 - 09 /06 /18

PROJECT TITLE
KNIGHTS OF COLUMBUS - O'FALLON

ENGINEERING COMPANY'S INFORMATION
VOLZ Incorporated
ENGINEERS LAND PLANNING LAND SURVEYING TRANSPORTATION CONSULTING MANAGEMENT
10849 Indian Head Indl. Blvd.
St. Louis, Missouri 63132
314.990.1250 Fax
www.volzinc.com
Authority #203

ORDER # 11344
ENGINEER SIGNATURE BLOCK

Ryan L. Holmes
Professional Engineer
PE-2017018988

DEVELOPER / OWNER INFORMATION:
Knights of Columbus - O'Fallon
202 W. 3rd St.
O'Fallon, MO 63366

P&Z NO. 17-011060
CITY NO.
DATE: 02/16/2018
PAGE NO.
C7

PROPOSED DRAINAGE AREA MAP

SITE ADDRESS: 202 W. 3RD ST., O'FALLON, MO 63366
PERMIT NO. CSP18-000025