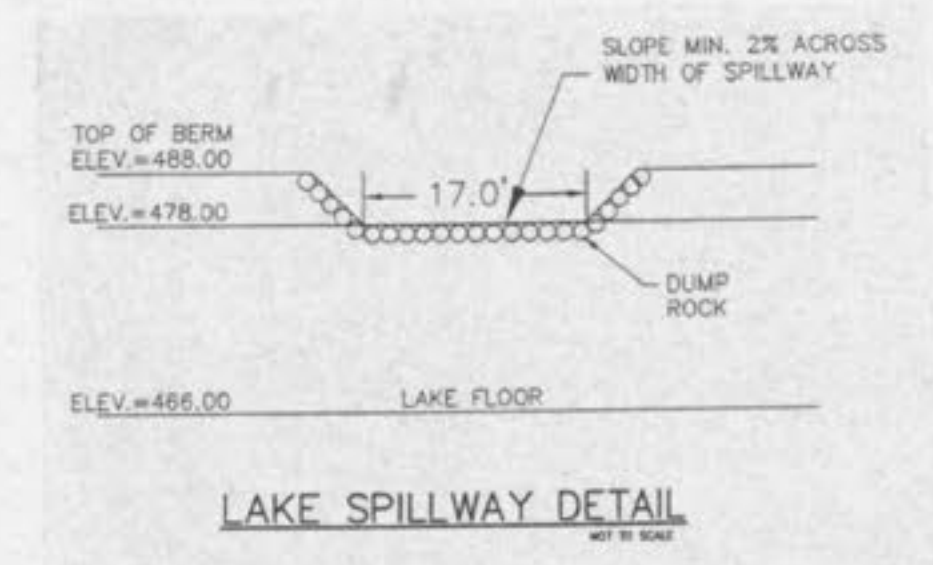
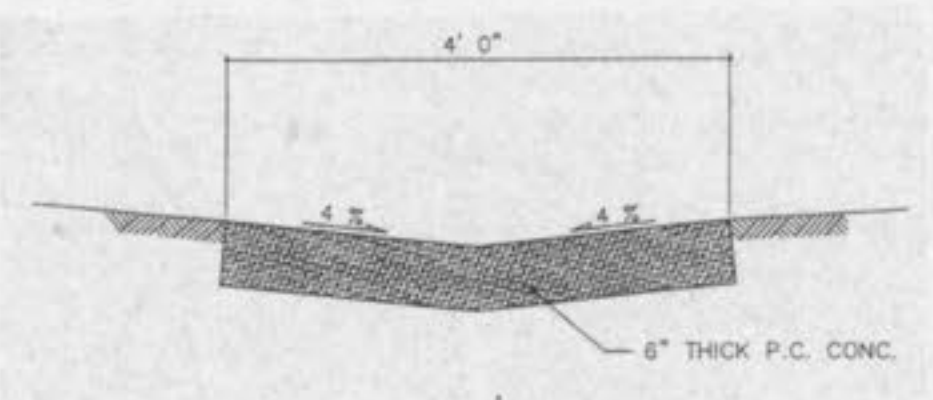


**OS #2 DETAIL**  
 NOT TO SCALE

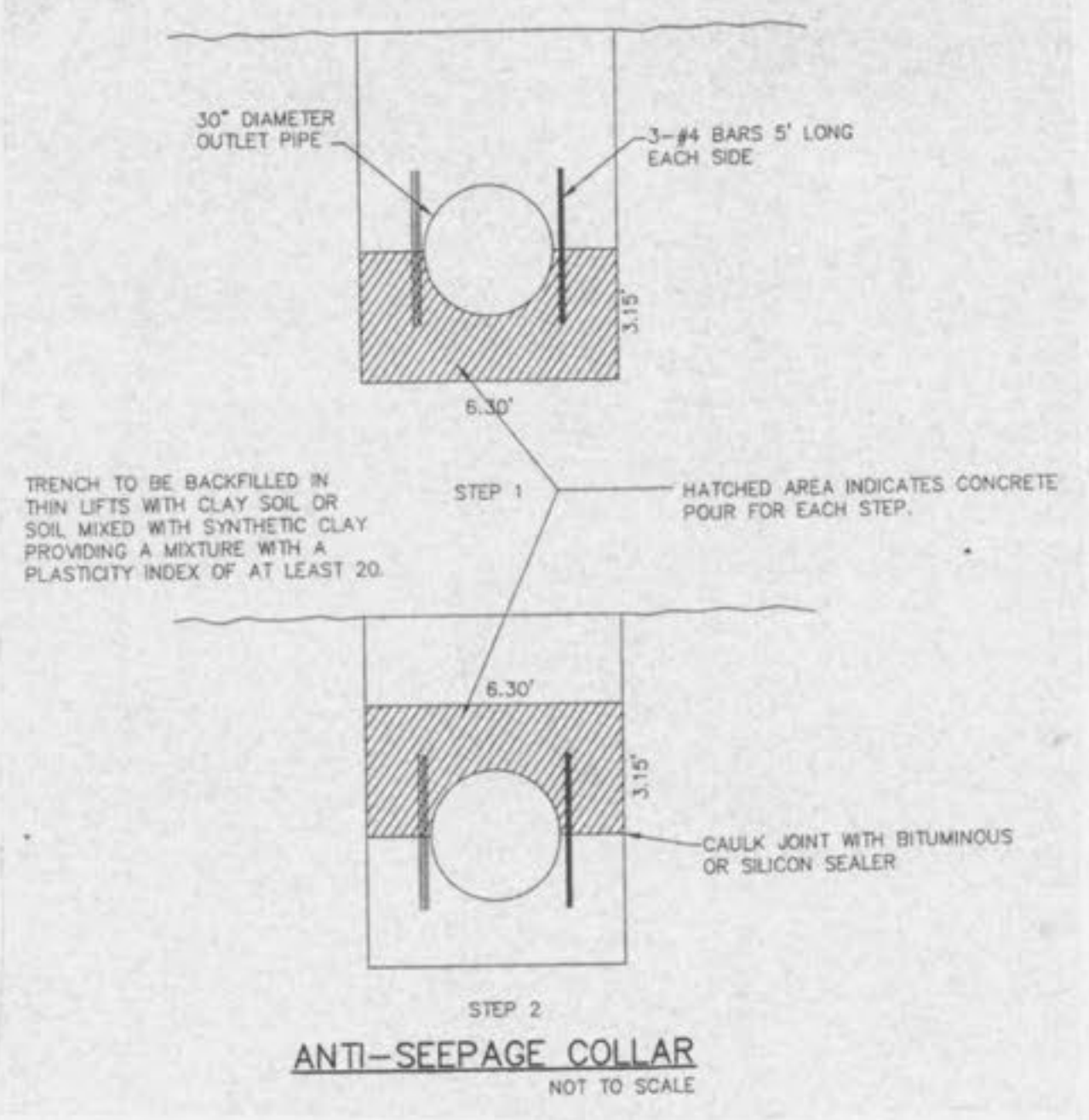
25 YEAR HIGHWATER 485.05  
 100 YEAR HIGHWATER 486.44



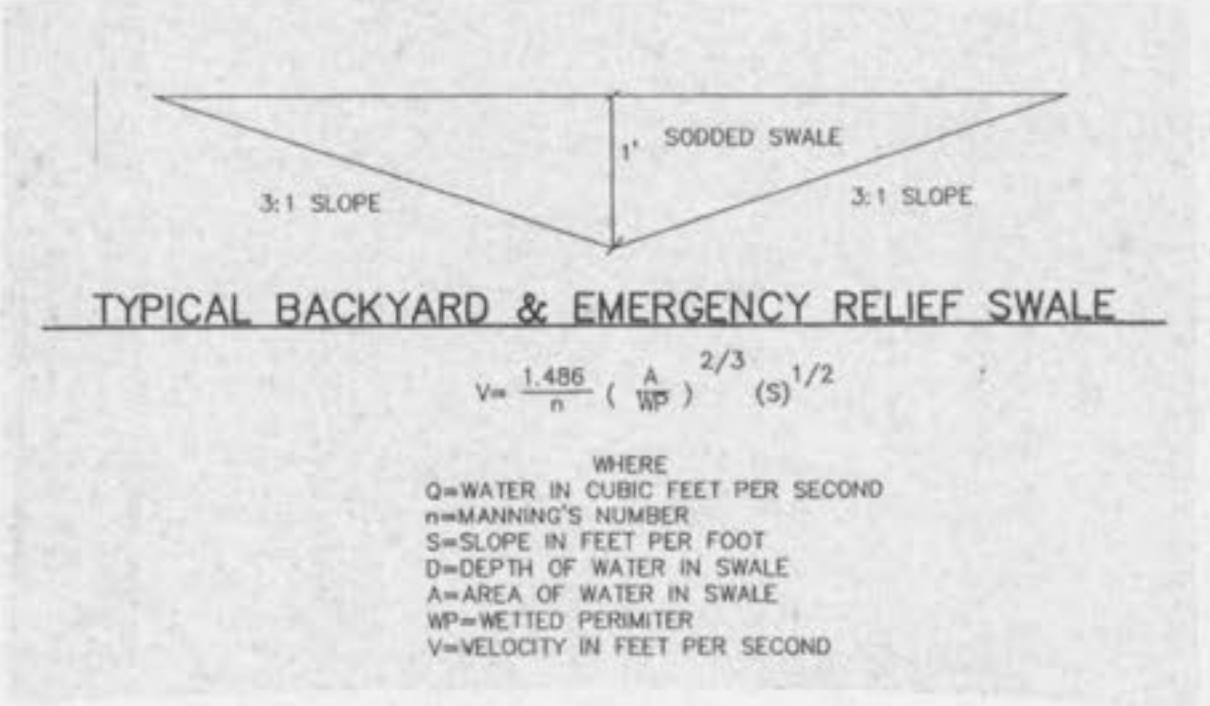
**LAKE SPILLWAY DETAIL**



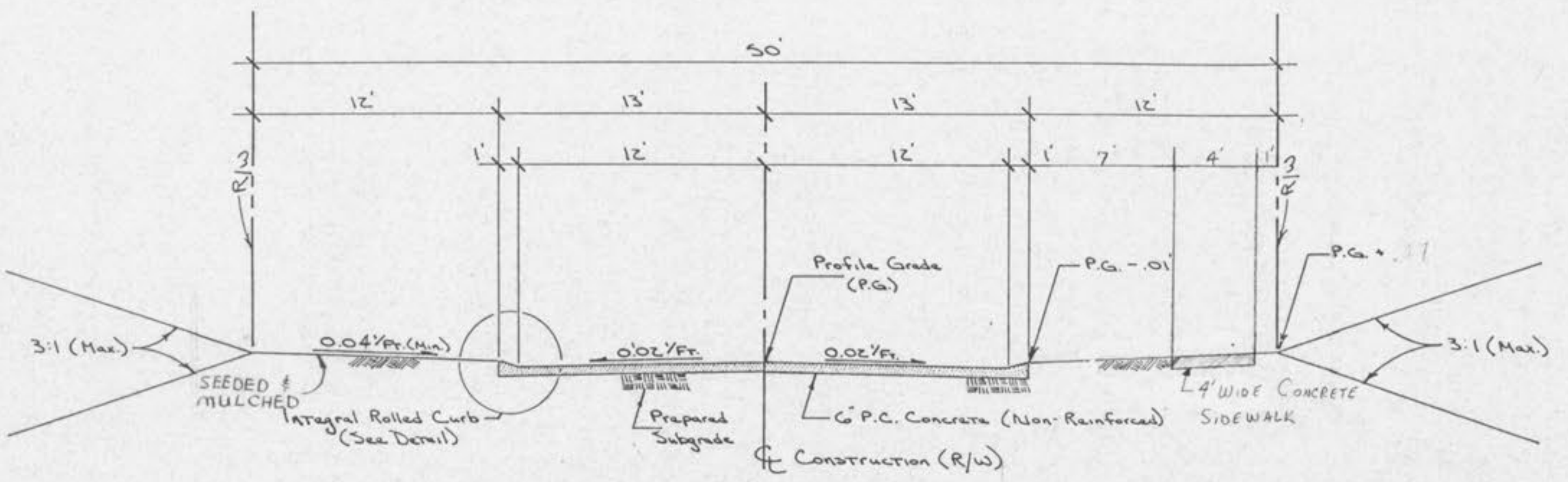
**PAVED SWALE DETAIL**



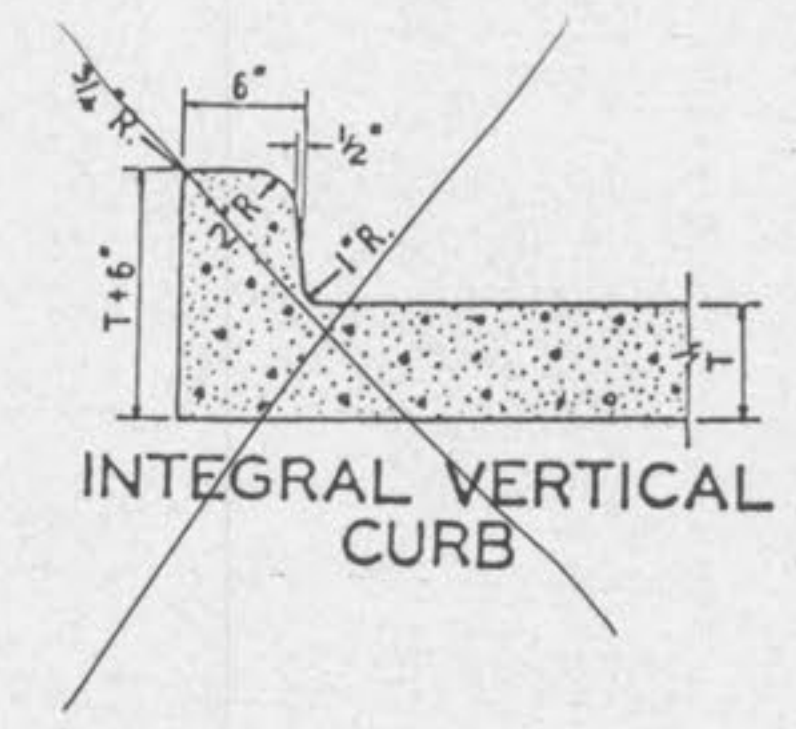
**ANTI-SEEPAGE COLLAR**  
 NOT TO SCALE



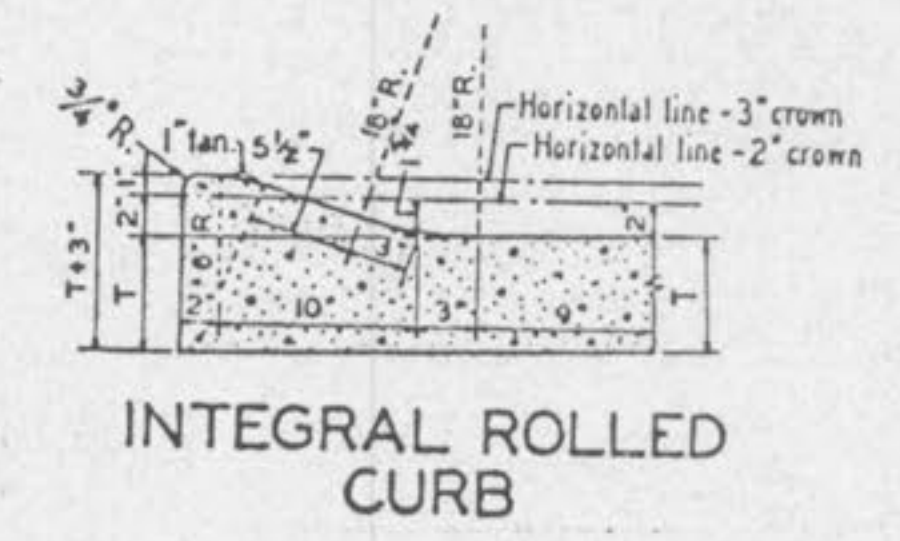
**TYPICAL BACKYARD & EMERGENCY RELIEF SWALE**



**TYPICAL SECTION**  
 (26' W. P.C. CONC. PVMT.)

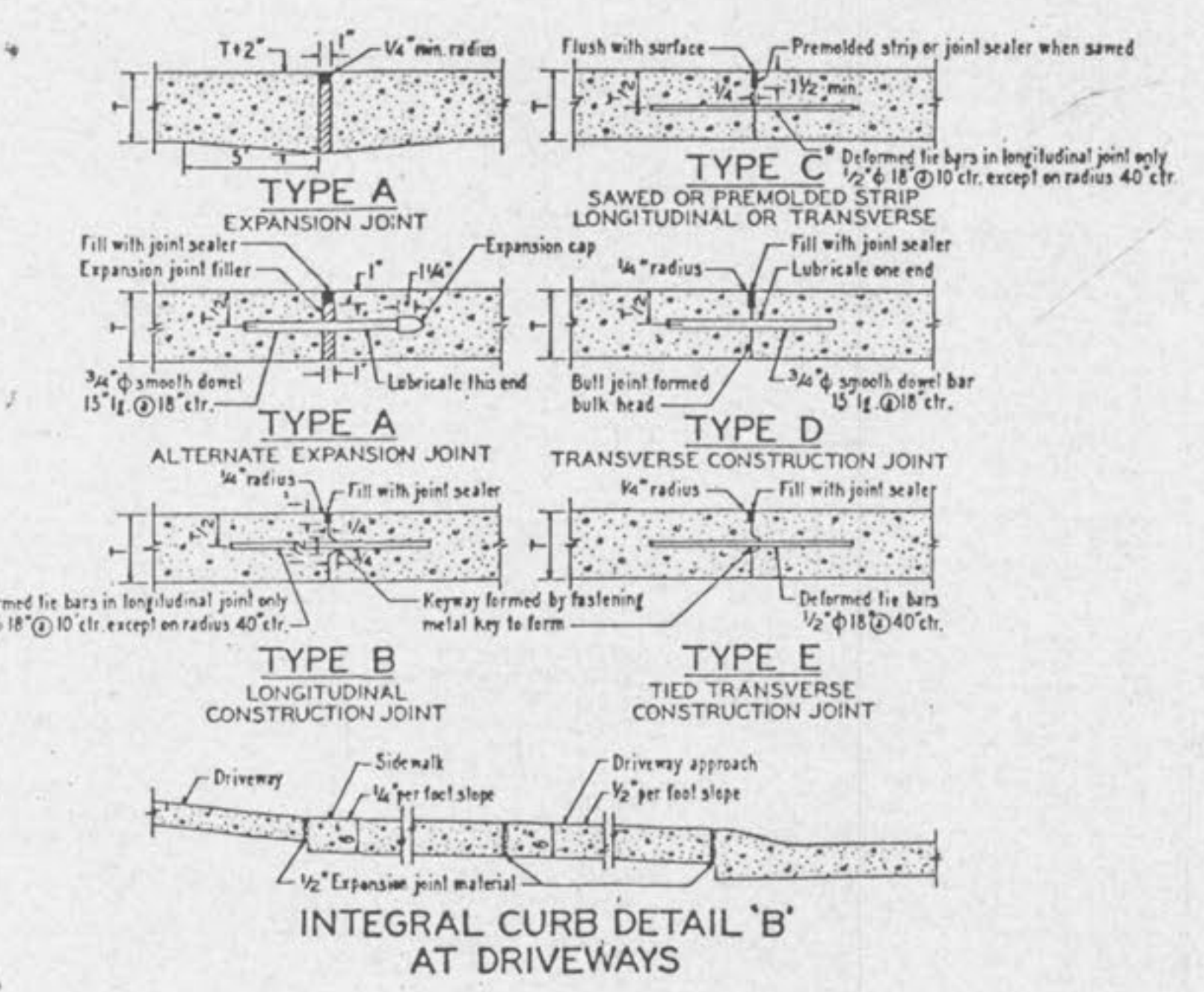
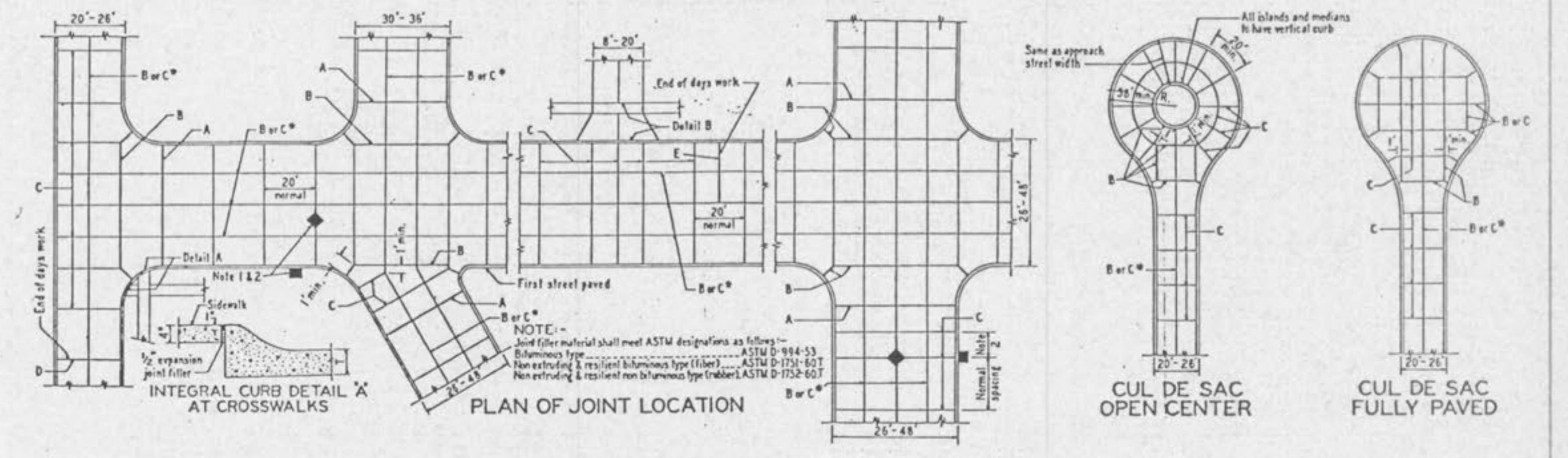


**INTEGRAL VERTICAL CURB**

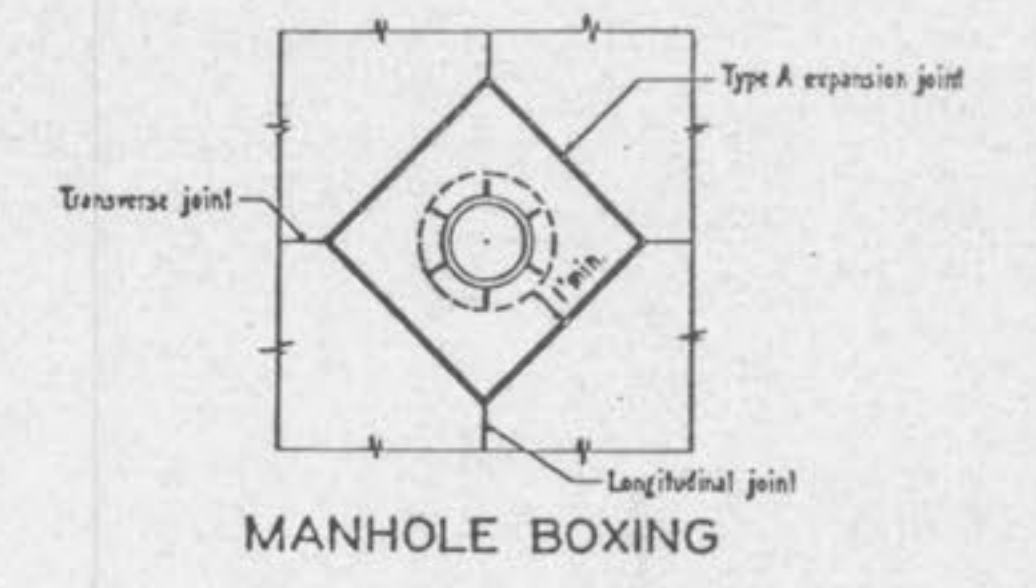


**INTEGRAL ROLLED CURB**

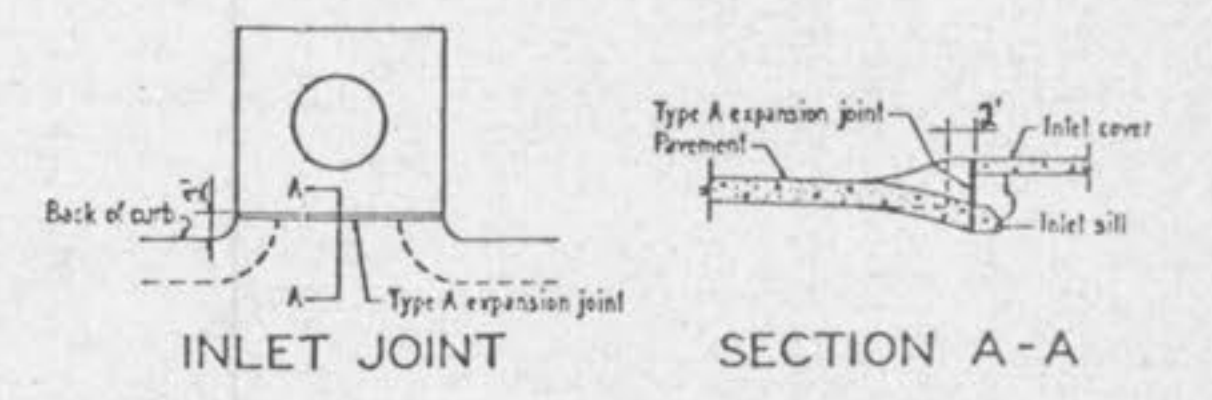
**INTEGRAL CURB PAVEMENT TYPICAL SECTIONS AND DETAILS**



**INTEGRAL CURB DETAIL 'B' AT DRIVEWAYS**



**MANHOLE BOXING**



**INLET JOINT SECTION A-A**

- NOTE
- 1) All catch basins shall be separated from the pavement and curb by expansion joint material extending completely through curb and slab. Manhole castings within the pavement limits shall be boxed in as shown.
  - 2) When a joint falls within 5 ft. of or contacts basin, manholes or other structures, shorten one or more panels either side of opening to permit joint to fall on round structures and at or between corners of rectangular structures.
  - 3) T=6" on Local street.
  - 4) T=7" on Major or Thru street.