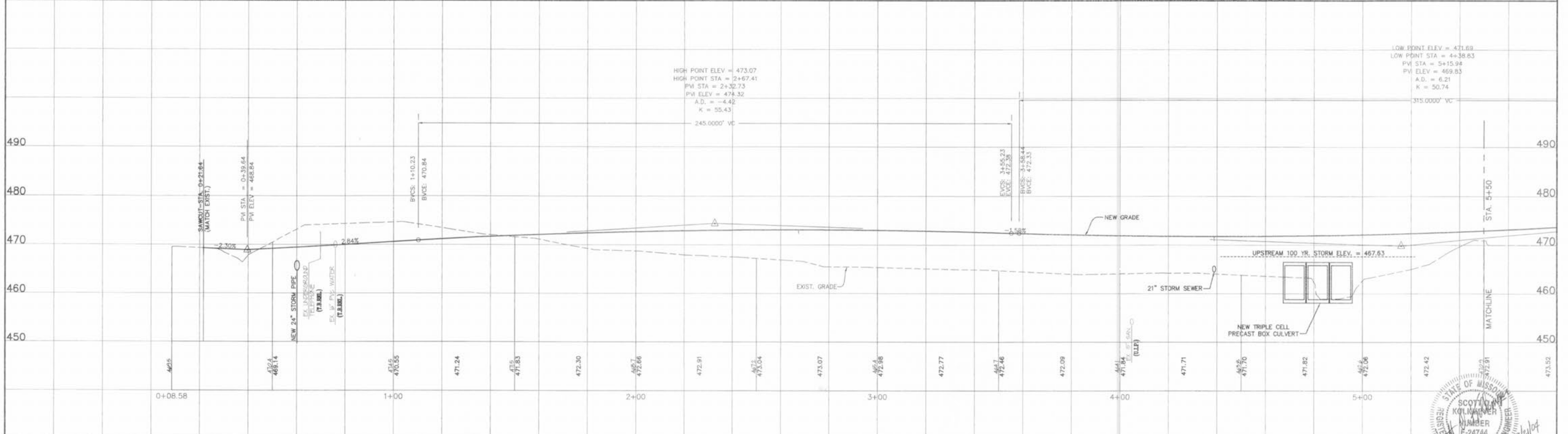


**CURVE 1**  
 L=212.75'  
 R=375.00'  
 TAN=109.32°  
 Δ=32°30'21"  
 CH=209.91'  
 CH BRG=N24°59'39"E

**CURVE 2**  
 L=196.77'  
 R=375.00'  
 TAN=100.70°  
 Δ=30°3'45"  
 CH=194.52'  
 CH BRG=N26°12'54"E



DATE	BY	DESCRIPTION
7-08-04	EB	REVISED PER CITY COMMENTS
7-30-04	EB	REVISED PER CITY COMMENTS
9-9-04	EB	REVISED PER CITY COMMENTS
9-16-04	EB	REVISED PER CITY COMMENTS

DATE	BY	DESCRIPTION

**BAX ENGINEERING CO., INC.**  
 1082 South Cloverleaf Drive  
 St. Peters, MO 63376-6445  
 Phone: 636-928-5552  
 Fax: 636-928-1718

PREPARED FOR:  
**HYLAND GREEN LLC**

PROJECT NAME:  
**KOCH ROAD RELOCATION**

**PLAN & PROFILE**

DISCLAIMER OF RESPONSIBILITY:  
 I hereby certify that the documents intended to be authorized by my seal are limited to this sheet, and I hereby disclaim any responsibility for all other drawings, specifications, estimates, reports or other documents or instruments relating to or intended to be used for any part or parts of the structure or engineering project or survey.

STATE OF MISSOURI  
 SCOTT D. KOLMAN  
 REGISTERED PROFESSIONAL ENGINEER  
 NUMBER E-24744  
 12/1/04

4  
 29