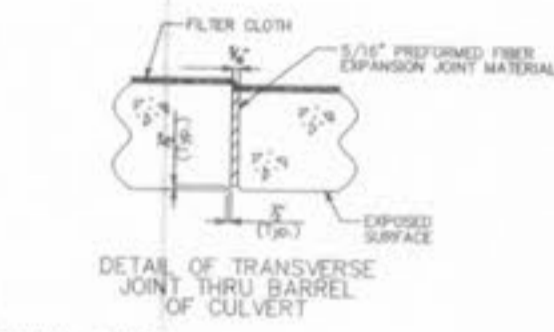
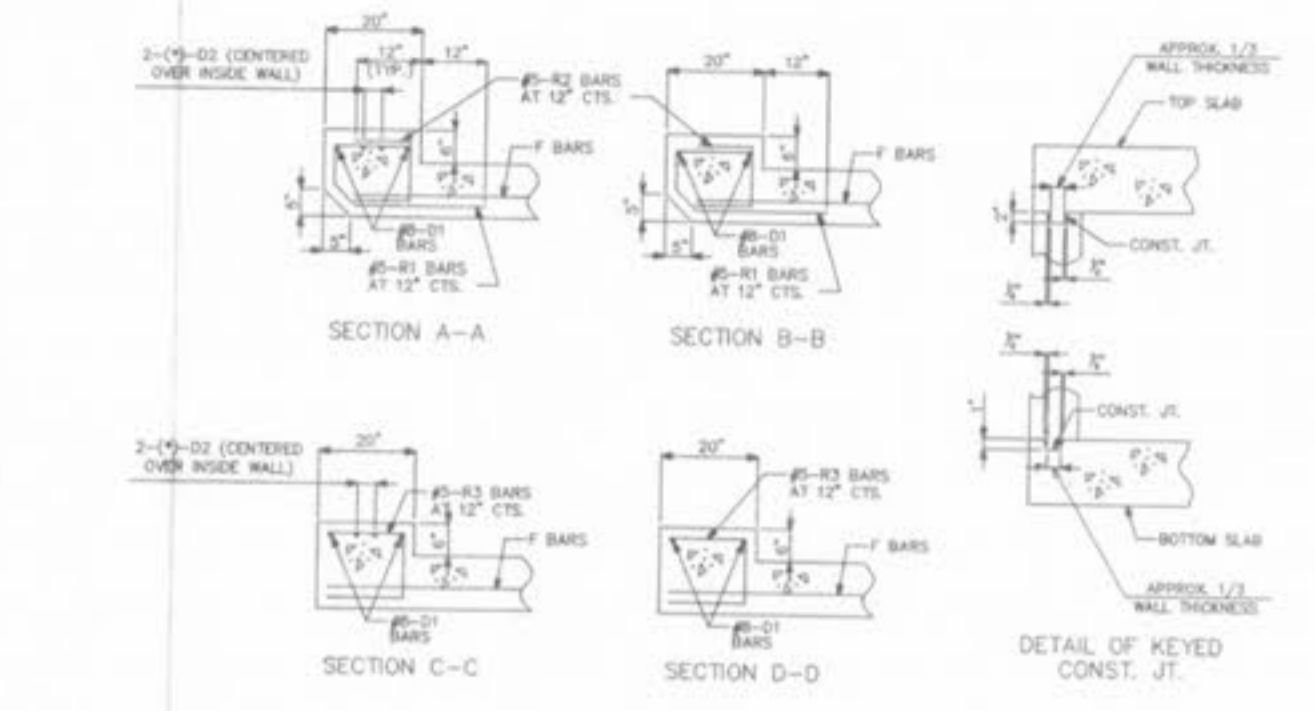
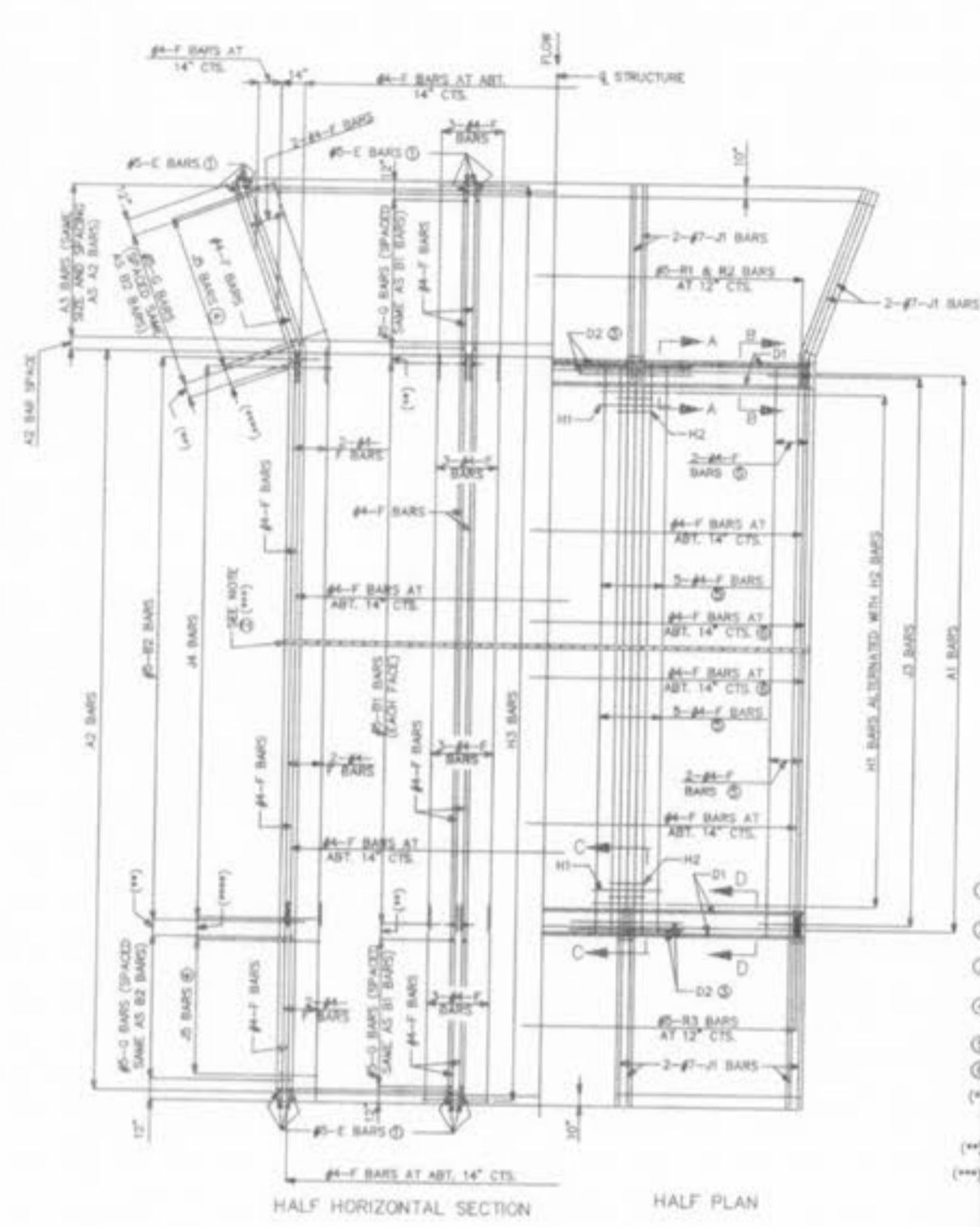


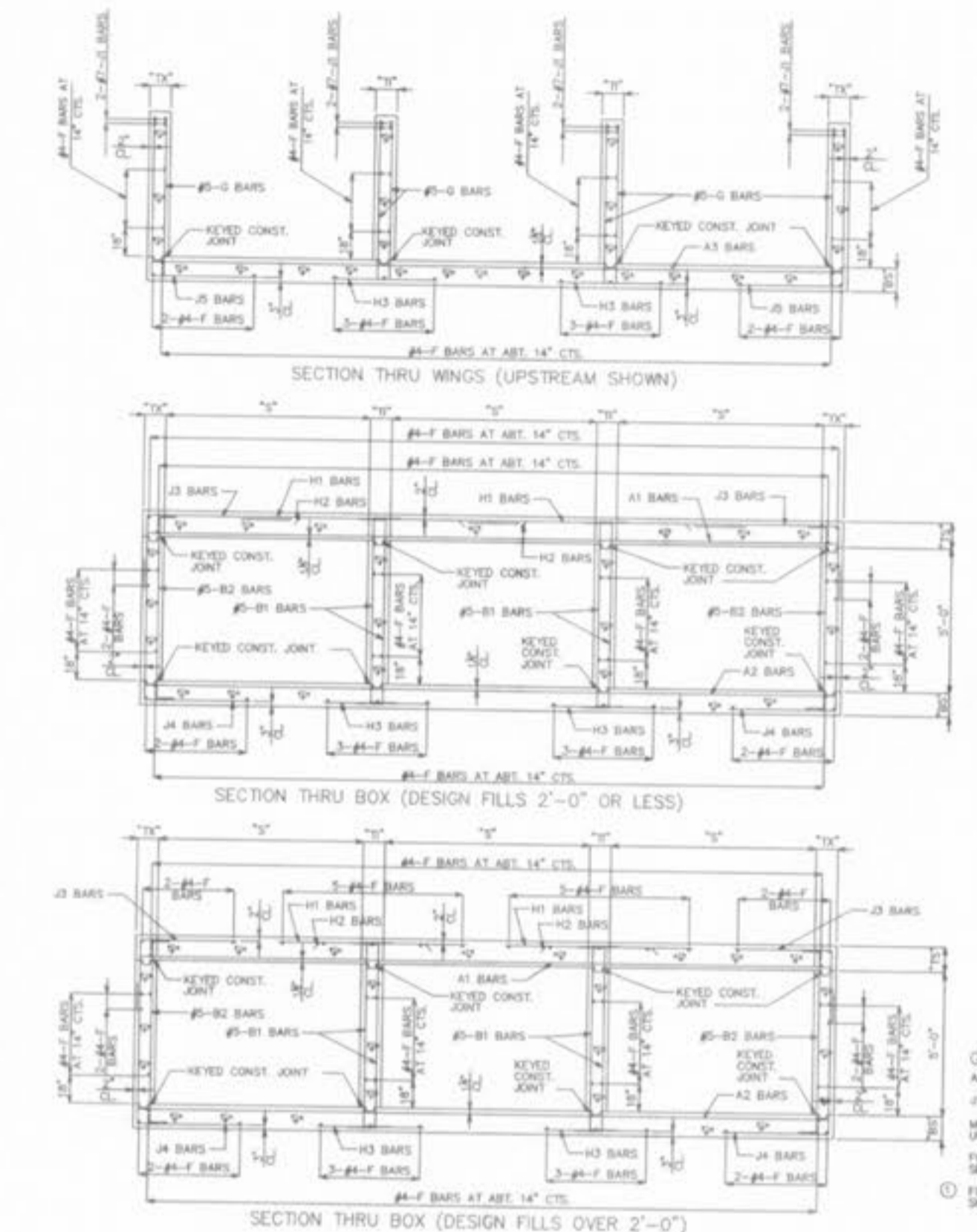
BOX CULVERT DESIGN
PER
MISSOURI STANDARD
PLANS
FOR
HIGHWAY
CONSTRUCTION
JULY 2004

CONCRETE
TRIPLE BOX CULVERT
8'Wx 7'H

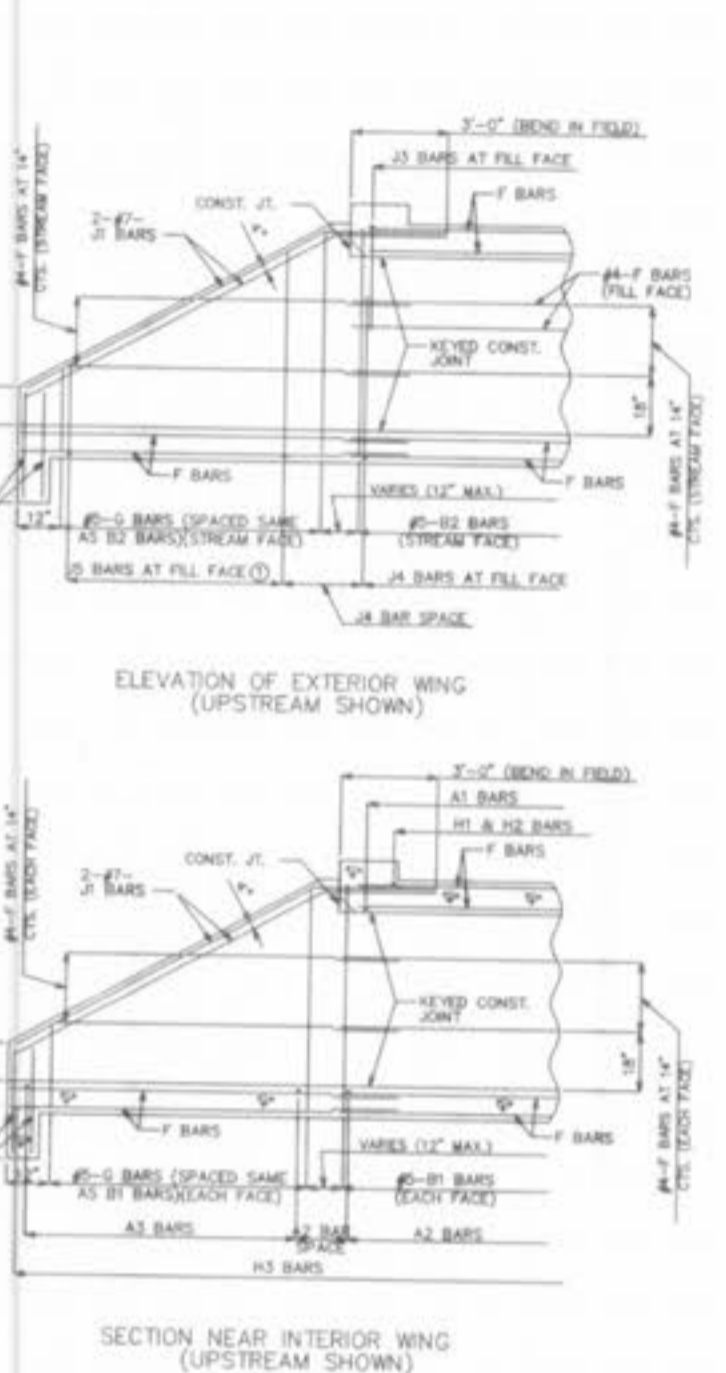


- GENERAL NOTES:
 DESIGN UNIT STRESSES:
 SLAB: 3.0 ksi CONCRETE, $f_c = 4000$ psi
 REINFORCING STEEL (GRADE 60): $f_y = 60,000$ psi
 ALL DIMENSIONS SHOWN ARE IN INCH UNLESS OTHERWISE NOTED.
 FOR DIMENSIONS SHOWN IN FEET UNLESS OTHERWISE NOTED, SEE STANDARD SHEET T03.1F.
 LAP ALL LONGITUDINAL BARS A MINIMUM OF 24" AT SPICES.
 MINIMUM CLEARANCE TO REINFORCING STEEL SHALL BE 1-1/2" UNLESS OTHERWISE SHOWN.
 PERFORMED FIBER REINFORCING JOINT MATERIAL SHALL BE SECURELY ATTACHED TO ONE FACE OF THE CONCRETE WITH NO. 10 GALV. COPPER WIRE OR NO. 12 GALV. SOFT DRAWN GALV. STEEL WIRE.
 REVEALED HEADWALLS TO BE LOCATED AT UPSTREAM END.
 A FILTER CLOTH 2 FEET IN WIDTH AND 10 FEET LONG SHALL BE INSTALLED AT ALL TRANSVERSE JOINTS IN THE TOP SLAB AND SIDEWALLS. THE FILTER CLOTH SHALL BE CENTERED ON THE JOINT AND THE EDGES SHALL BE A MINIMUM OF 1/4" FROM THE EDGES OF THE JOINTS AND SHALL BE SECURELY ATTACHED TO THE CONCRETE WITH GALV. COPPER WIRE OR GALV. SOFT DRAWN GALV. STEEL WIRE. THE FILTER CLOTH SHALL BE SECURELY ATTACHED TO THE CONCRETE WITH GALV. COPPER WIRE OR GALV. SOFT DRAWN GALV. STEEL WIRE. THE FILTER CLOTH SHALL BE SECURELY ATTACHED TO THE CONCRETE WITH GALV. COPPER WIRE OR GALV. SOFT DRAWN GALV. STEEL WIRE.
 FOR MORE DETAILS AND SECTION THROUGH BOX, SEE T03.1F SHEET 2 OF 2.
 MISSOURI HIGHWAY AND TRANSPORTATION COMMISSION

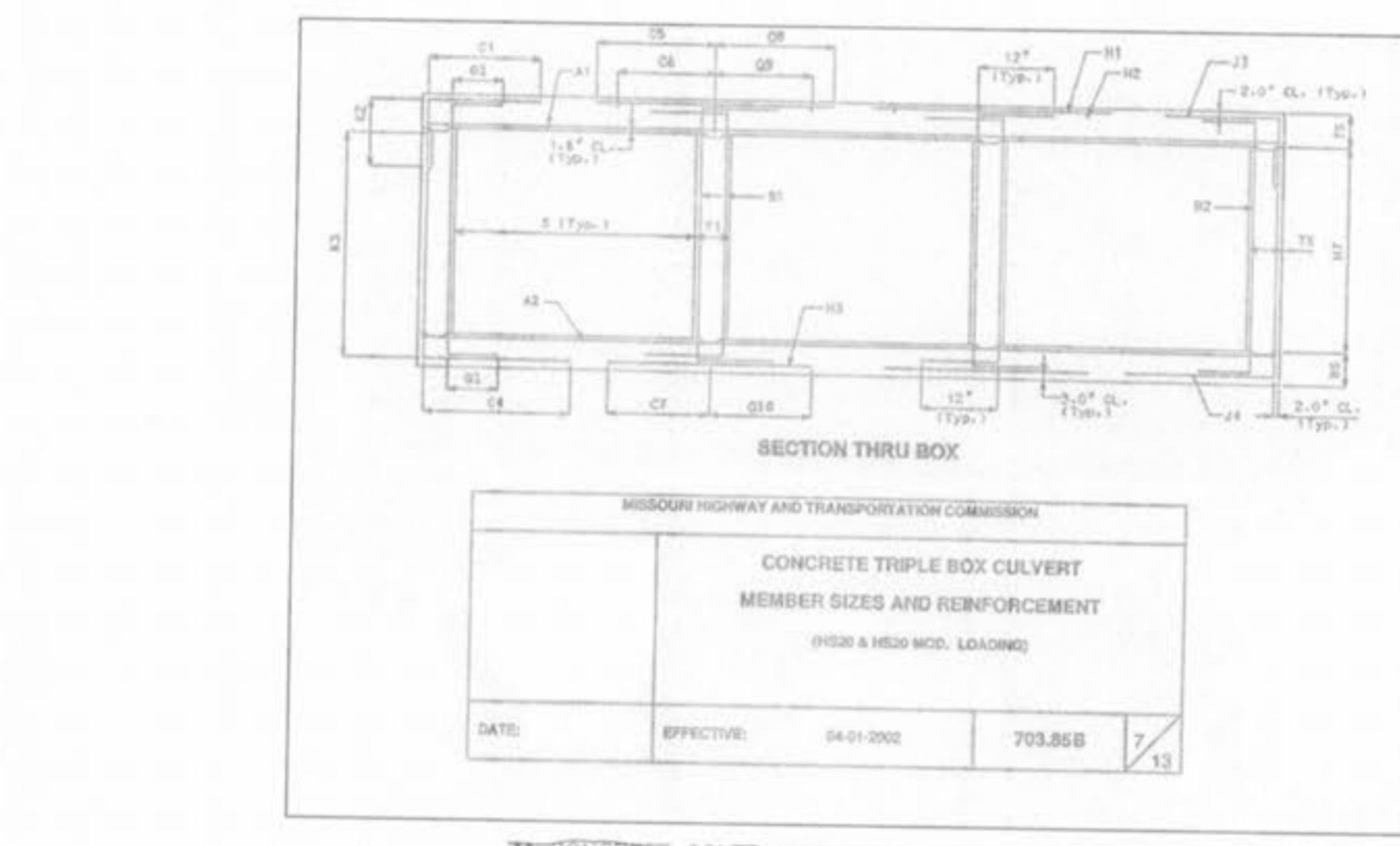
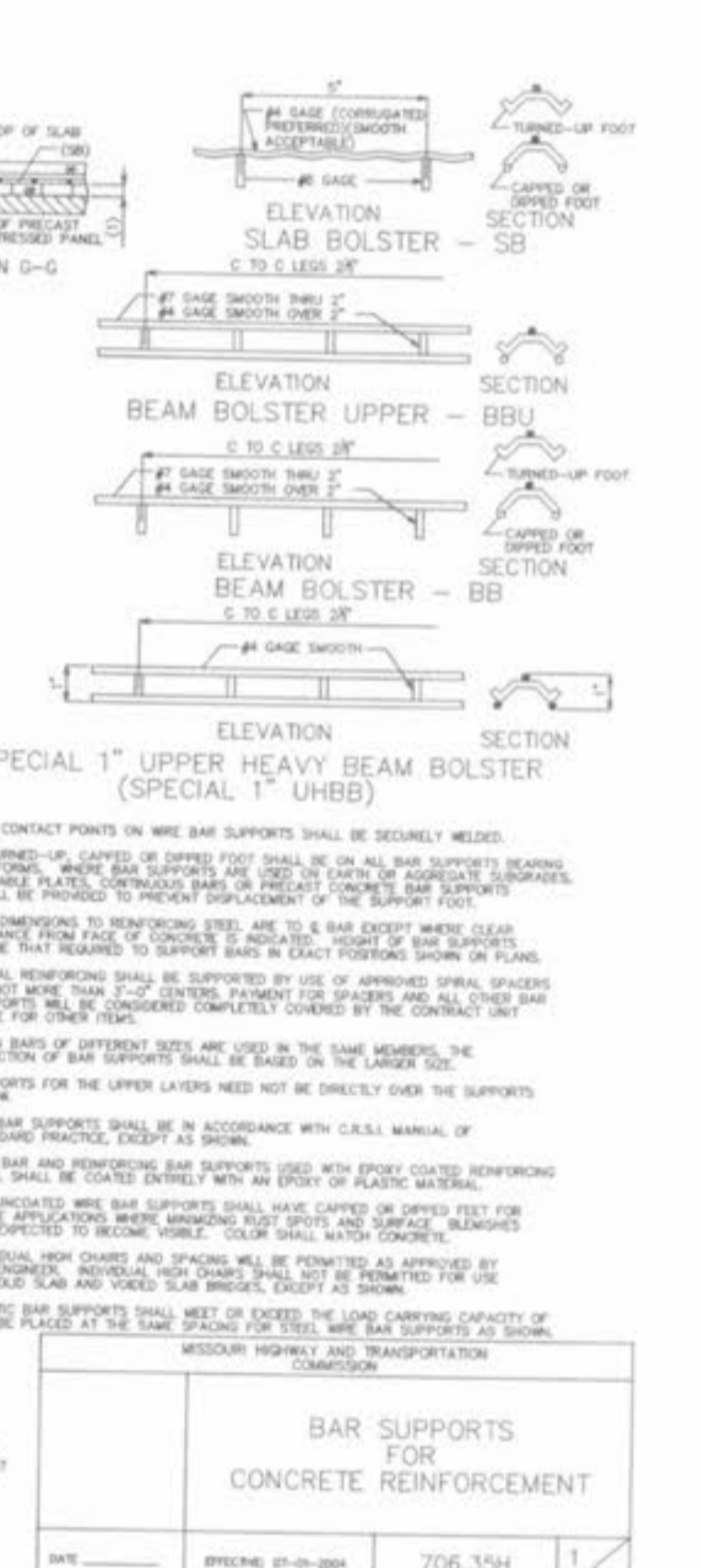
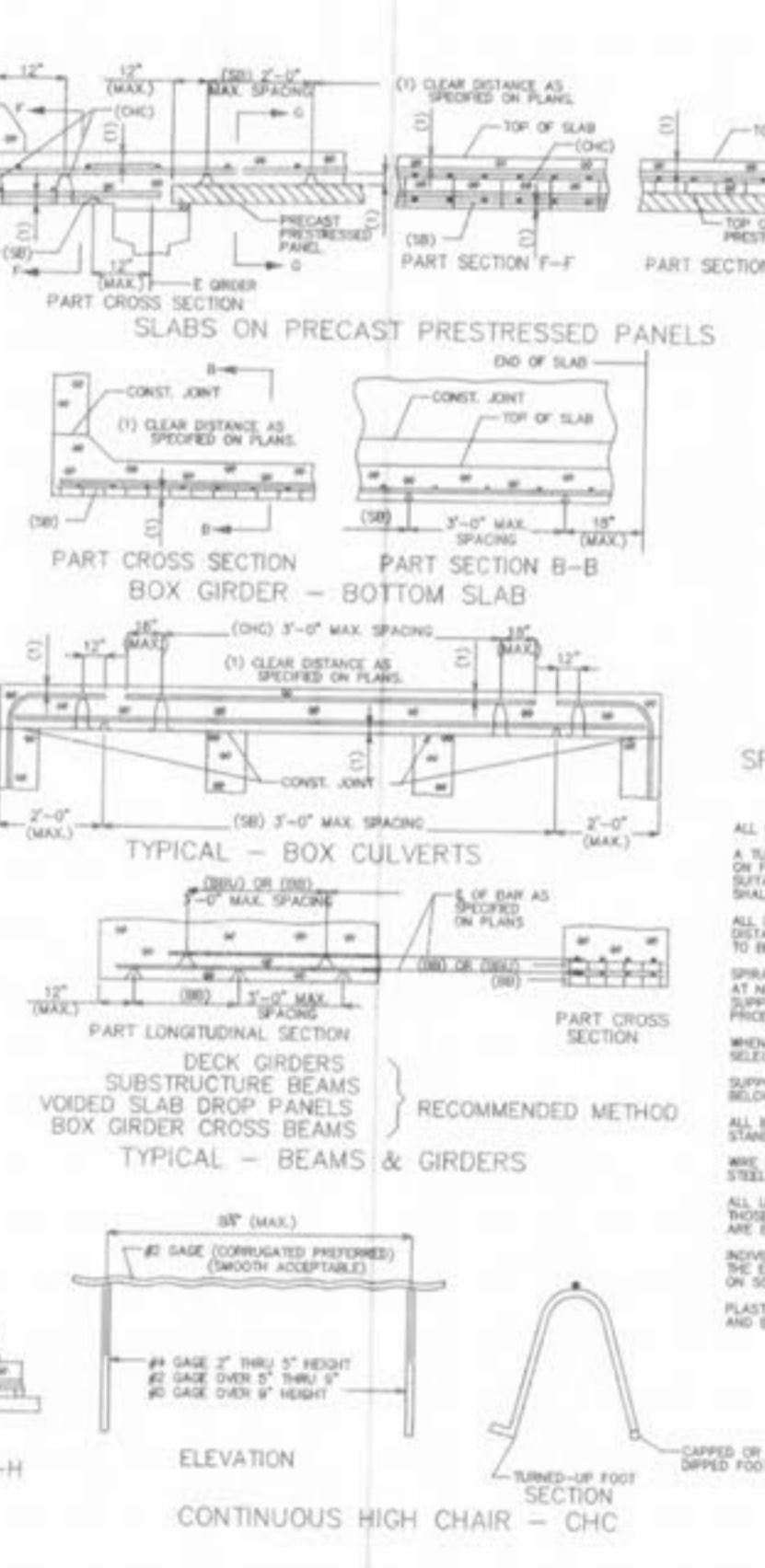
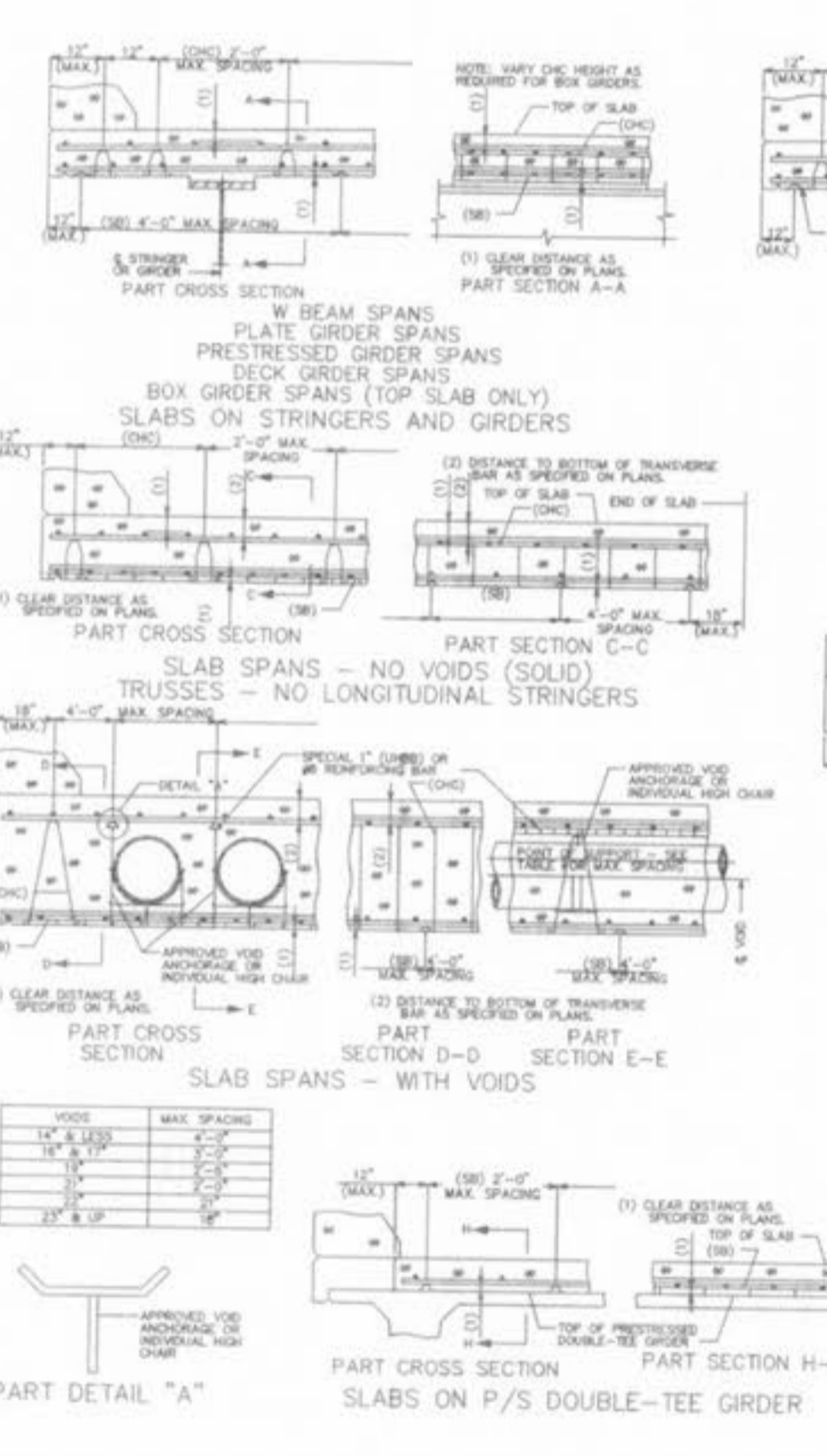
MISSOURI HIGHWAY AND TRANSPORTATION COMMISSION			
CONCRETE TRIPLE BOX STRUCTURE (SQUARE)			
DATE:	ISSUE:	703.81F	1/2



- GENERAL NOTES:
 ALL DIMENSIONS SHOWN ARE IN INCH UNLESS OTHERWISE NOTED.
 IF BARS MUST BE BENT IN FIELD OR SHOP.
 MINIMUM CLEARANCE TO REINFORCING STEEL SHALL BE 1-1/2" UNLESS OTHERWISE SHOWN.
 FOR DIMENSIONS AND SEE AND SPACING OF REINFORCING STEEL, SEE STANDARD SHEET T03.1F.
 FOR DETAILS OF REINFORCEMENT IN WALLS, SEE STANDARD SHEET T03.1F.



MISSOURI HIGHWAY AND TRANSPORTATION COMMISSION			
CONCRETE TRIPLE BOX STRUCTURE (SQUARE)			
DATE:	ISSUE:	703.81F	2/2



MISSOURI HIGHWAY AND TRANSPORTATION COMMISSION			
CONCRETE TRIPLE BOX CULVERT			
MEMBER SIZES AND REINFORCEMENT			
(H200 & H200 MOD. LOADINGS)			
DATE:	EFFECTIVE:	703.85B	7/13

** CONCRETE COVER WAS INCREASED TO 2" MINIMUM PER THE REQUIREMENTS OF THE CITY OF FALLON

DATE	BY	DESCRIPTION	DATE	BY	DESCRIPTION
7-08-04	EB	REVISED PER CITY COMMENTS	1-08-05	TOF	REVISED PER CITY COMMENTS
7-30-04	EB	REVISED PER CITY COMMENTS	1-14-05	TOF	REVISED PER CITY COMMENTS
8-9-04	EB	REVISED PER CITY COMMENTS			
8-16-04	EB	REVISED PER CITY COMMENTS			

BAT BAX ENGINEERING CO., INC.
 1052 South Cloverleaf Drive
 St. Peters, MO 63376-6445
 Phone: 636-928-5050
 Fax: 636-928-1718

PREPARED FOR:
HYLAND GREEN LLC

PROJECT NAME:
KOCH ROAD RELOCATION
 PROJECT NO.: 98-10293D DATE: 05/20/2004

**BOX CULVERT
REFERENCE DETAILS**

DISCLAIMER OF RESPONSIBILITY
 I hereby certify that the documents attached to be authorized by my seal are limited to this sheet. Drawings, Specifications, Estimates, Reports or other documents of instruments relating to or intended to be used for any part or parts of the construction or engineering project or survey.
 Copyright 2005
 Box Engineering Company, Inc.
 All Rights Reserved

File Copy
APPROVED
 1-20-05
 Frank Salvi