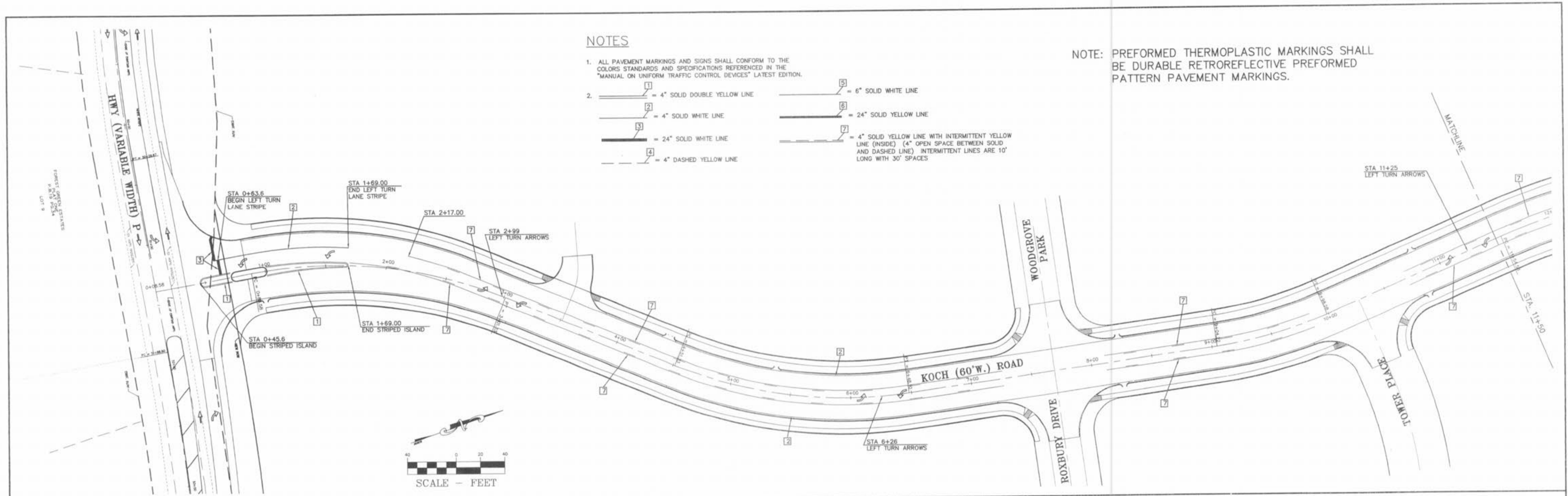


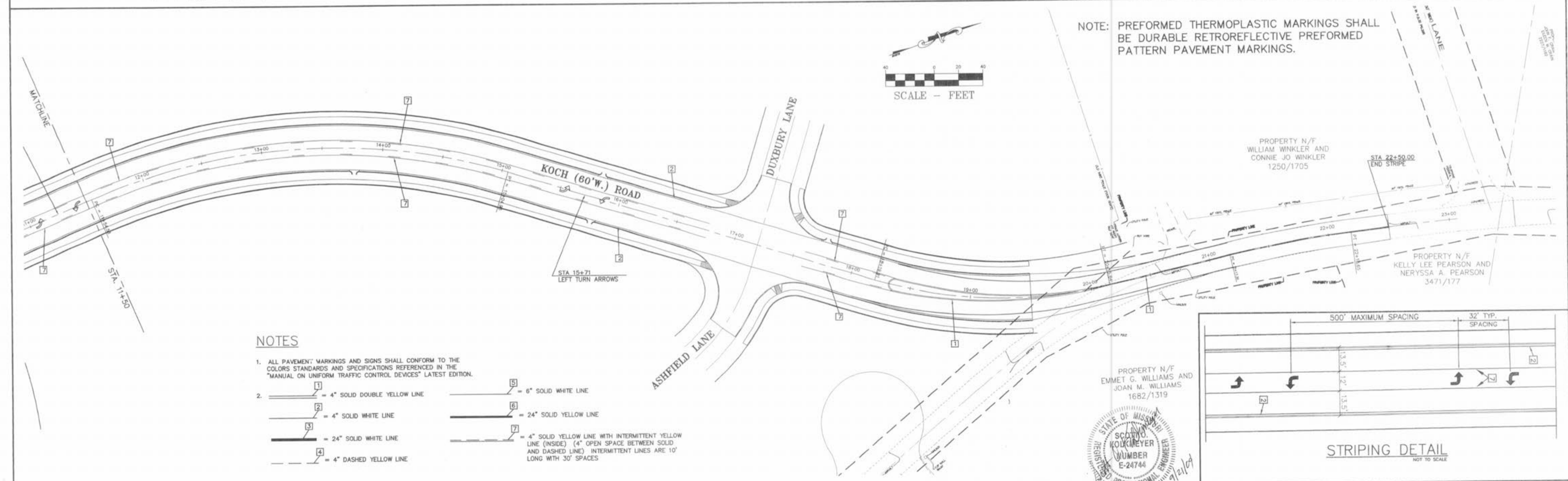
F:\DWG\10000\PLUS\10293D KOCH RD ALIGN\Koch Road\Const\Construction\10293D--STRIPING.dwg, SHEET27, 9/16/2004 9:47:38 AM, Station: 67 E&B



NOTES

- ALL PAVEMENT MARKINGS AND SIGNS SHALL CONFORM TO THE COLORS STANDARDS AND SPECIFICATIONS REFERENCED IN THE "MANUAL ON UNIFORM TRAFFIC CONTROL DEVICES" LATEST EDITION.
- | | | | |
|--|-------------------------------|--|---|
| | = 4" SOLID DOUBLE YELLOW LINE | | = 6" SOLID WHITE LINE |
| | = 4" SOLID WHITE LINE | | = 24" SOLID YELLOW LINE |
| | = 24" SOLID WHITE LINE | | = 4" SOLID YELLOW LINE WITH INTERMITTENT YELLOW LINE (INSIDE) (4" OPEN SPACE BETWEEN SOLID AND DASHED LINE) INTERMITTENT LINES ARE 10' LONG WITH 30' SPACES |
| | = 4" DASHED YELLOW LINE | | |

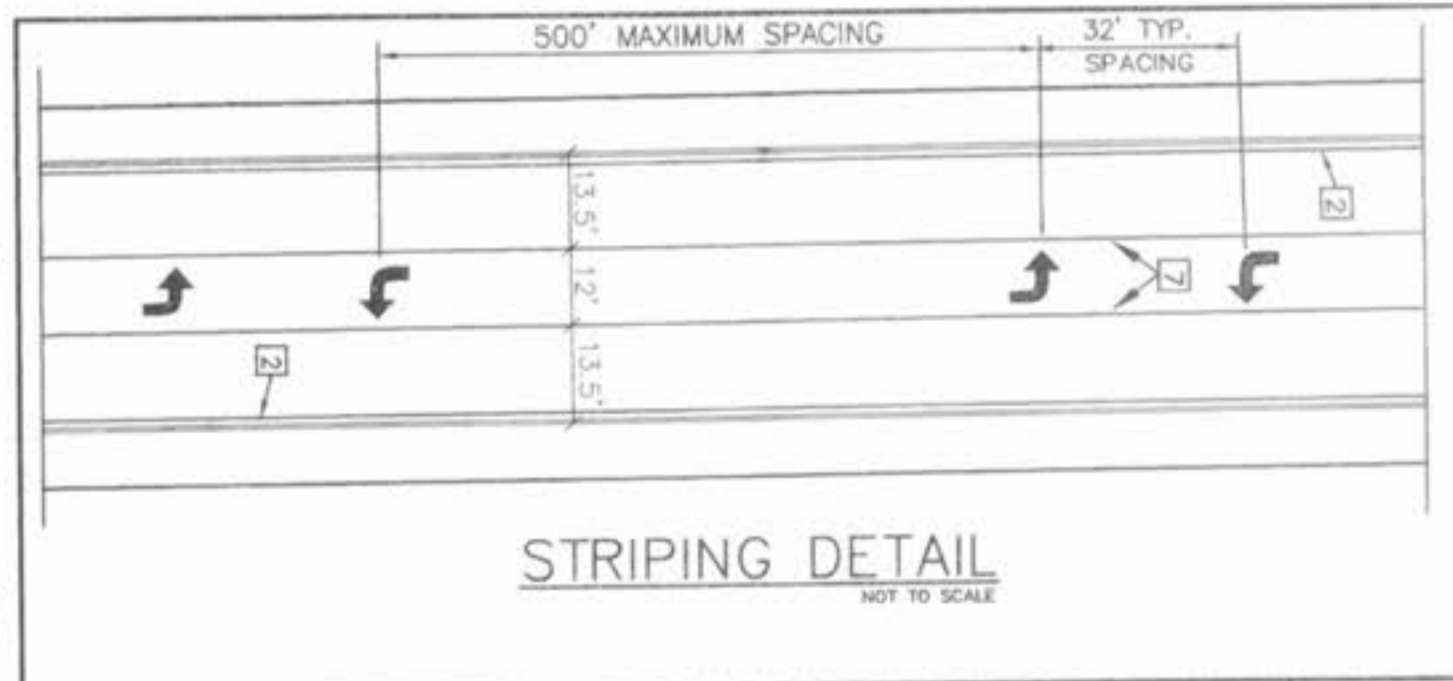
NOTE: PREFORMED THERMOPLASTIC MARKINGS SHALL BE DURABLE RETROREFLECTIVE PREFORMED PATTERN PAVEMENT MARKINGS.



NOTES

- ALL PAVEMENT MARKINGS AND SIGNS SHALL CONFORM TO THE COLORS STANDARDS AND SPECIFICATIONS REFERENCED IN THE "MANUAL ON UNIFORM TRAFFIC CONTROL DEVICES" LATEST EDITION.
- | | | | |
|--|-------------------------------|--|---|
| | = 4" SOLID DOUBLE YELLOW LINE | | = 6" SOLID WHITE LINE |
| | = 4" SOLID WHITE LINE | | = 24" SOLID YELLOW LINE |
| | = 24" SOLID WHITE LINE | | = 4" SOLID YELLOW LINE WITH INTERMITTENT YELLOW LINE (INSIDE) (4" OPEN SPACE BETWEEN SOLID AND DASHED LINE) INTERMITTENT LINES ARE 10' LONG WITH 30' SPACES |
| | = 4" DASHED YELLOW LINE | | |

NOTE: PREFORMED THERMOPLASTIC MARKINGS SHALL BE DURABLE RETROREFLECTIVE PREFORMED PATTERN PAVEMENT MARKINGS.



PROPERTY N/F
EMMET G. WILLIAMS AND
JOAN M. WILLIAMS
1682/1319



DATE	BY	DESCRIPTION	DATE	BY	DESCRIPTION
7-08-04	EB	REVISED PER CITY COMMENTS			
7-30-04	EB	REVISED PER CITY COMMENTS			
9-9-04	EB	REVISED PER CITY COMMENTS			
9-16-04	EB	REVISED PER CITY COMMENTS			

BAX ENGINEERING CO., INC.
1052 South Cloverleaf Drive
St. Peters, MO 63376-6445
Phone: 636-928-5555
Fax: 636-928-1718

PREPARED FOR:
HYLAND GREEN LLC

PROJECT NAME:
KOCH ROAD RELOCATION

STRIPING PLAN

PROJECT NO.: 98-10293D DATE: 05/20/2004

DISCLAIMER OF RESPONSIBILITY: I hereby certify that the documents intended to be authorized by my seal are limited to this sheet, and I hereby disclaim any responsibility for all other drawings, specifications, estimates, reports or other documents or instruments existing or intended to be used for any part or parts of the architectural or engineering project or survey.

Copyright 2004
Bax Engineering Company, Inc.
All Rights Reserved