

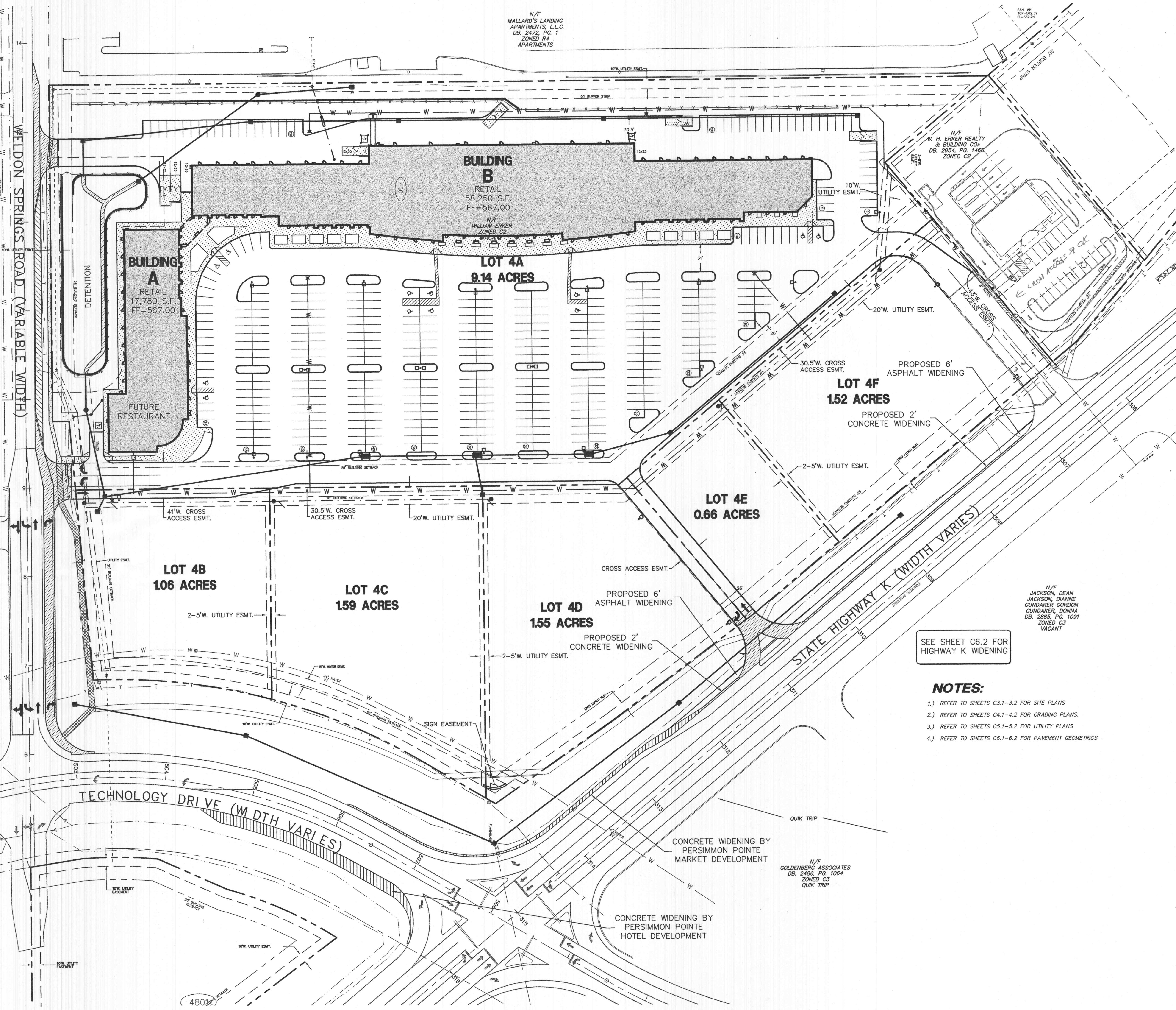
N/F
KELLEN-BECK
PROPERTIES, LLC
DB. 2476, PG. 1717
ZONED HTCD
VACANT

N/F
MALLARD'S LANDING
APARTMENTS, L.L.C.
DB. 2472, PG. 1
ZONED R4
APARTMENTS

N/F
W. H. ERKER REALTY
& BUILDING CO.
DB. 2354, PG. 1466
ZONED C2

N/F
JACKSON, DEAN
JACKSON, DIANNE
GUNDAKER, DONNA
DB. 2865, PG. 1091
ZONED C3
VACANT

N/F
GOLDENBERG ASSOCIATES
DB. 2486, PG. 1084
ZONED C3
QUICK TRIP



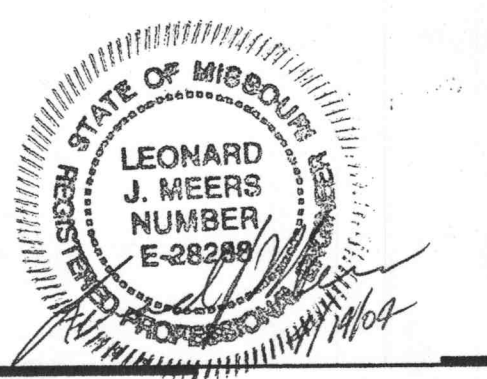
SEE SHEET C6.2 FOR
HIGHWAY K WIDENING

NOTES:

- 1.) REFER TO SHEETS C3.1-3.2 FOR SITE PLANS
- 2.) REFER TO SHEETS C4.1-4.2 FOR GRADING PLANS.
- 3.) REFER TO SHEETS C5.1-5.2 FOR UTILITY PLANS
- 4.) REFER TO SHEETS C6.1-6.2 FOR PAVEMENT GEOMETRICS

PREPARED FOR:
WILLIAM H. ERKER
35 N. CENTRAL, STE 400
ST. LOUIS, MO 63105
PH: (314) 863-6061
FAX: (314) 863-6146

J:\1004\1004B\PLANS\CD.1-OVERALLSITE.dwg Tue Apr 13 17:33:56 2004 JHM-W



GENERAL CONTRACTOR
ARCHITECT
STRUCTURAL ENGINEER
GEOTECHNICAL ENGINEER
CIVIL ENGINEER
MECHANICAL ENGINEER
PLUMBING ENGINEER
ELECTRICAL ENGINEER
FIRE PROTECTION

ARCO CONSTRUCTION CO., INC.
THOMAS ROOF INC. ARCHITECTS
IBRAHIM ENGINEERING CORP.
GEOTECHNOLOGY
J.R. GRIMES CONSULTING ENGINEERS
JARRELL MECHANICAL CONTRACTORS
SYSTEM AIRE, INC.
PAYNE CREST ELECTRICAL
BI-STATE FIRE PROTECTION



LABOURÉ CENTRE

4601 HIGHWAY K
O'FALLON, MISSOURI



THOMAS ROOF INC. • ARCHITECTS
6251 Maryland Ave. Suite 300 314-726-9990
St. Louis, Missouri 63105 Fax: 726-9991
© Copyright 2004 www.thomasroof.com

DATE: 02/13/04

REVISIONS

| NO. | DESCRIPTION | DATE |
|-----|--|----------|
| 1 | PER CITY, DUCKETT CREEK & MODOT COMMENTS | 04/06/04 |
| | | |
| | | |
| | | |
| | | |
| | | |

DWG. BY: JLW
PROJECT NO.: 1004B
SHEET NO.:

C2.1
OVERALL SITE PLAN

P&Z FILE # 0704/0704.01