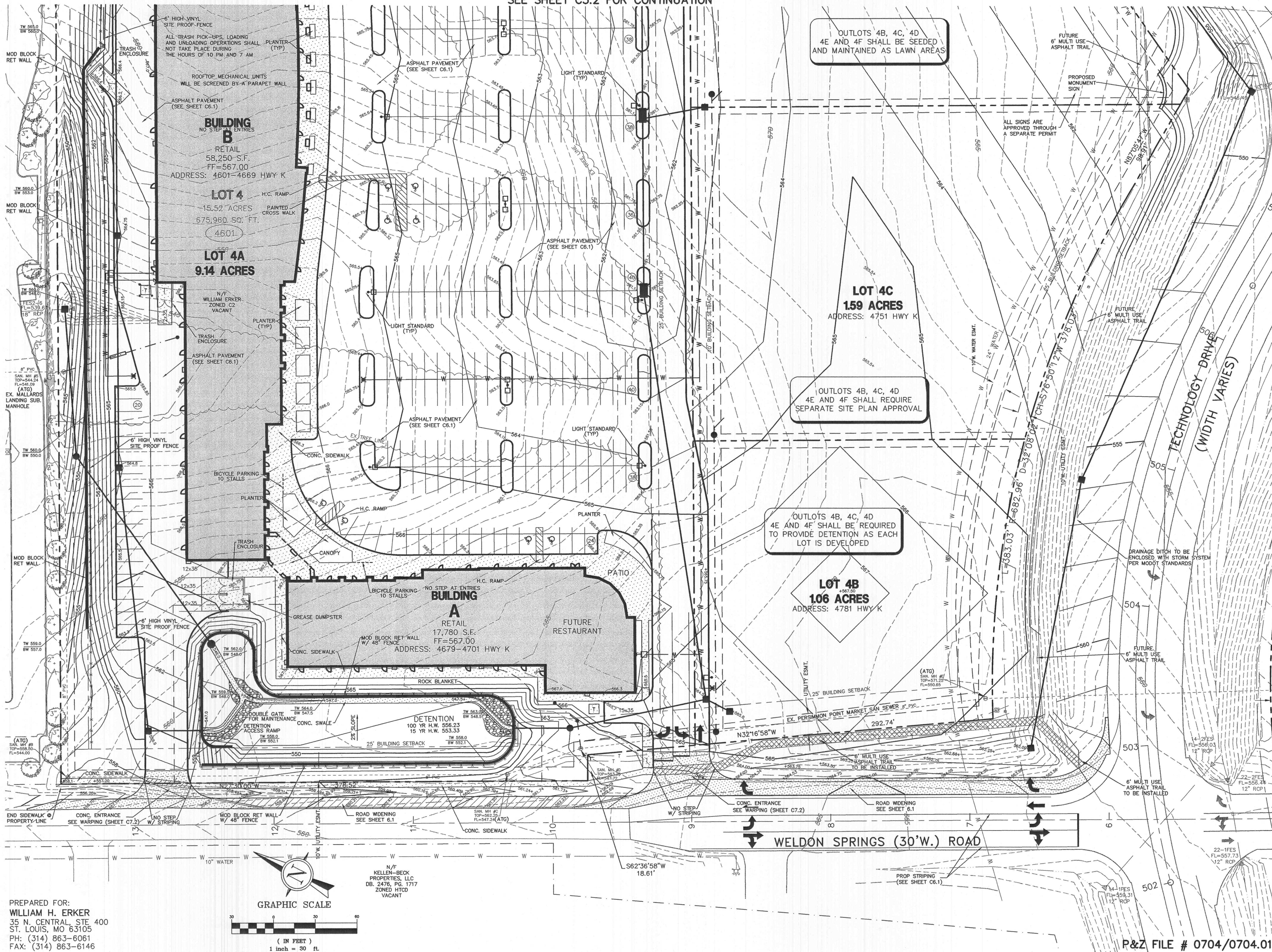


SEE SHEET C3.2 FOR CONTINUATION



OUTLOTS 4B, 4C, 4D
4E AND 4F SHALL BE SEEDED
AND MAINTAINED AS LAWN AREAS

OUTLOTS 4B, 4C, 4D
4E AND 4F SHALL REQUIRE
SEPARATE SITE PLAN APPROVAL

OUTLOTS 4B, 4C, 4D
4E AND 4F SHALL BE REQUIRED
TO PROVIDE DETENTION AS EACH
LOT IS DEVELOPED

STATE OF MISSOURI
LEONARD J. MEERS
NUMBER E-282260
PROFESSIONAL ENGINEER

GENERAL CONTRACTOR
ARCHITECT
STRUCTURAL ENGINEER
GEOTECHNICAL ENGINEER
CIVIL ENGINEER
MECHANICAL ENGINEER
PLUMBING ENGINEER
ELECTRICAL ENGINEER
FIRE PROTECTION

ARCO CONSTRUCTION CO., INC.
THOMAS ROOF INC. ARCHITECTS
IBRAHIM ENGINEERING CORP.
GEOTECHNOLOGY
J.R. GRIMS CONSULTING ENGINEERS
JARRELL MECHANICAL CONTRACTORS
SYSTEM/AIRE, INC.
PAYNE CREST ELECTRICAL
BLISTATE FIRE PROTECTION



LABOURE CENTRE

4601 HIGHWAY K
O'FALLON, MISSOURI

TRI
Architects of the Possible™

THOMAS ROOF INC - ARCHITECTS
8251 Maryland Ave. Suite 300
St. Louis, Missouri 63105
314-728-9990
fax-728-9991
www.thomasroof.com

DATE: 02/13/04

REVISES
PER CITY, DUCKETT CREEK
& MODOT COMMENTS 04/06/04

DWG. BY: JLW
PROJECT NO.: 1004B
SHEET NO.:

C3.1
SITE PLAN

P&Z FILE # 0704/0704.01

J:\1004\1004B\PLANS\C3.1-SITE.dwg Tue Apr 13 17:37:55 2004 JLM-W

PREPARED FOR:
WILLIAM H. ERKER
35 N. CENTRAL, STE 400
ST. LOUIS, MO 63105
PH: (314) 863-6061
FAX: (314) 863-6146

N/F
KELLEN-BECK
PROPERTIES, LLC
DB. 2476, PG. 1717
ZONED HTCD
VACANT