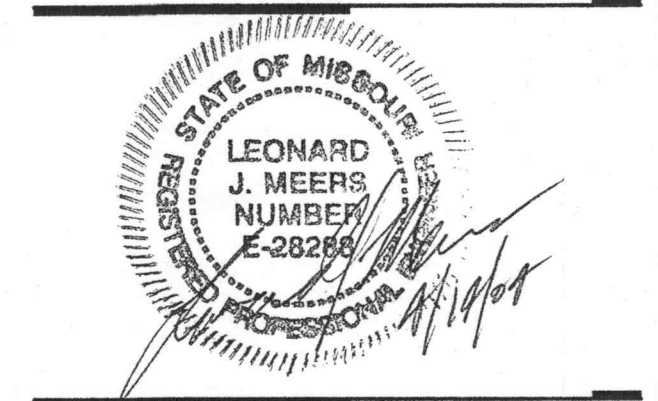
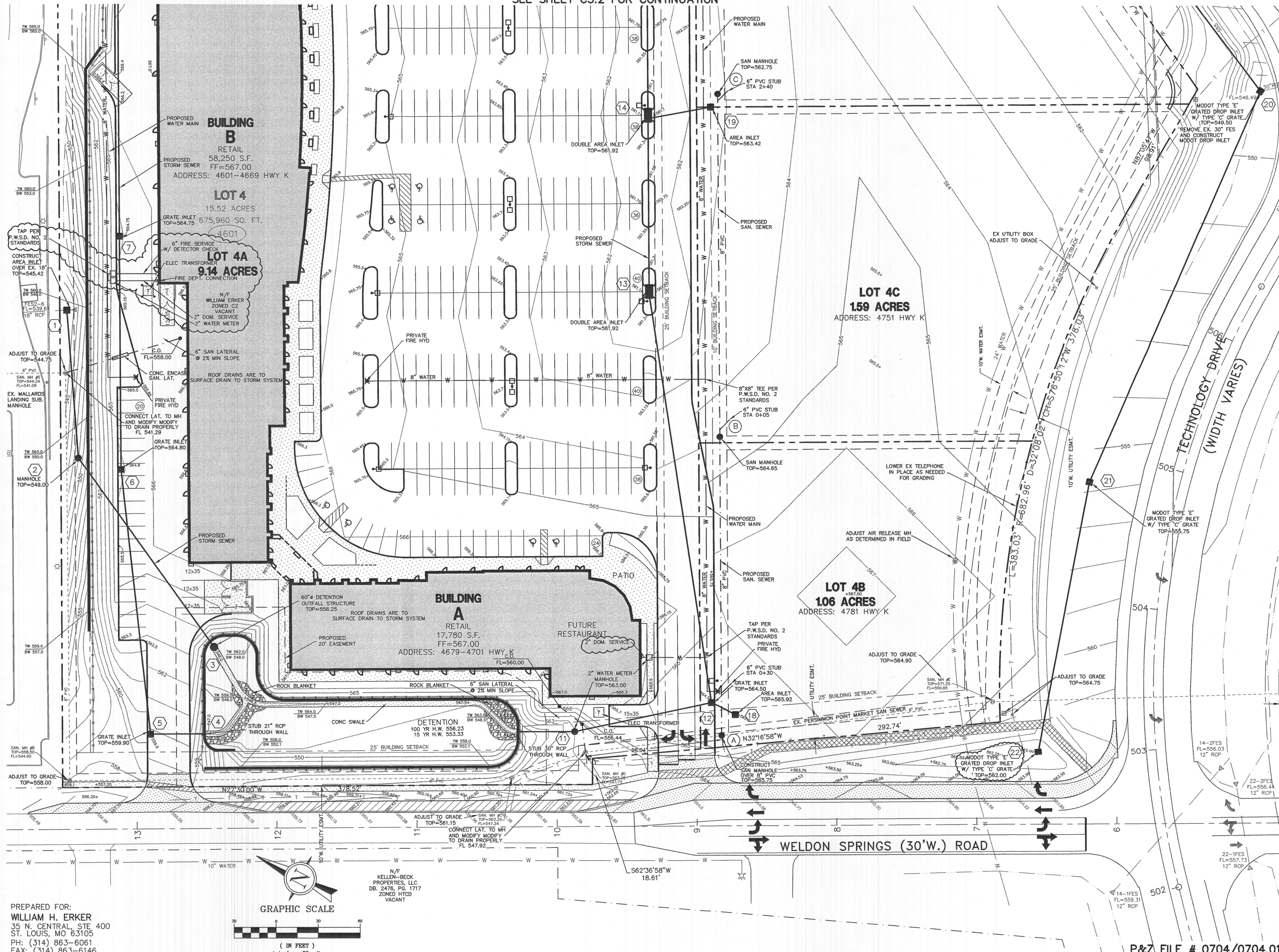


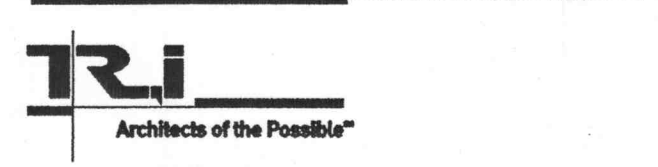
SEE SHEET C5.2 FOR CONTINUATION



- GENERAL CONTRACTOR
 ARCHITECT
 STRUCTURAL ENGINEER
 GEOTECHNICAL ENGINEER
 CIVIL ENGINEER
 MECHANICAL ENGINEER
 PLUMBING ENGINEER
 ELECTRICAL ENGINEER
 FIRE PROTECTION
- ARCO CONSTRUCTION CO., INC.
 THOMAS ROOF INC. ARCHITECTS
 IBRAHIM ENGINEERING CORP.
 GEOTECHNOLOGY
 J.R. GRIMES CONSULTING ENGINEERS
 JARRELL MECHANICAL CONTRACTORS
 SYSTEM AIRE, INC.
 PAYNE CREST ELECTRIC
 BI-STATE FIRE PROTECTION



LABOURÉ CENTRE
 4601 HIGHWAY K
 O'FALLON, MISSOURI



THOMAS ROOF INC. ARCHITECTS
 5521 Maryland Ave. Suite 300
 St. Louis, Missouri 63105
 314-725-9990
 Fax: 725-9991
 www.thomastroof.com

DATE: 02/13/04
 REVISIONS:
 OWNER & FIRE COMMENTS 2/26/04
 PER CITY, DUCKETT CREEK
 & MODOT COMMENTS 04/06/04

DWG. BY: J.W.
 PROJECT NO.: 10048
 SHEET NO.:

C5.1
 UTILITY PLAN

P&Z FILE # 0704/0704.01

J:\1004\1004B\PLANS\C5.1-UTILITY.dwg Tue Apr 13 17:41:05 2004 JIM-H

PREPARED FOR:
 WILLIAM H. ERKER
 35 N. CENTRAL, STE 400
 ST. LOUIS, MO 63105
 PH: (314) 863-6061
 FAX: (314) 863-6146

