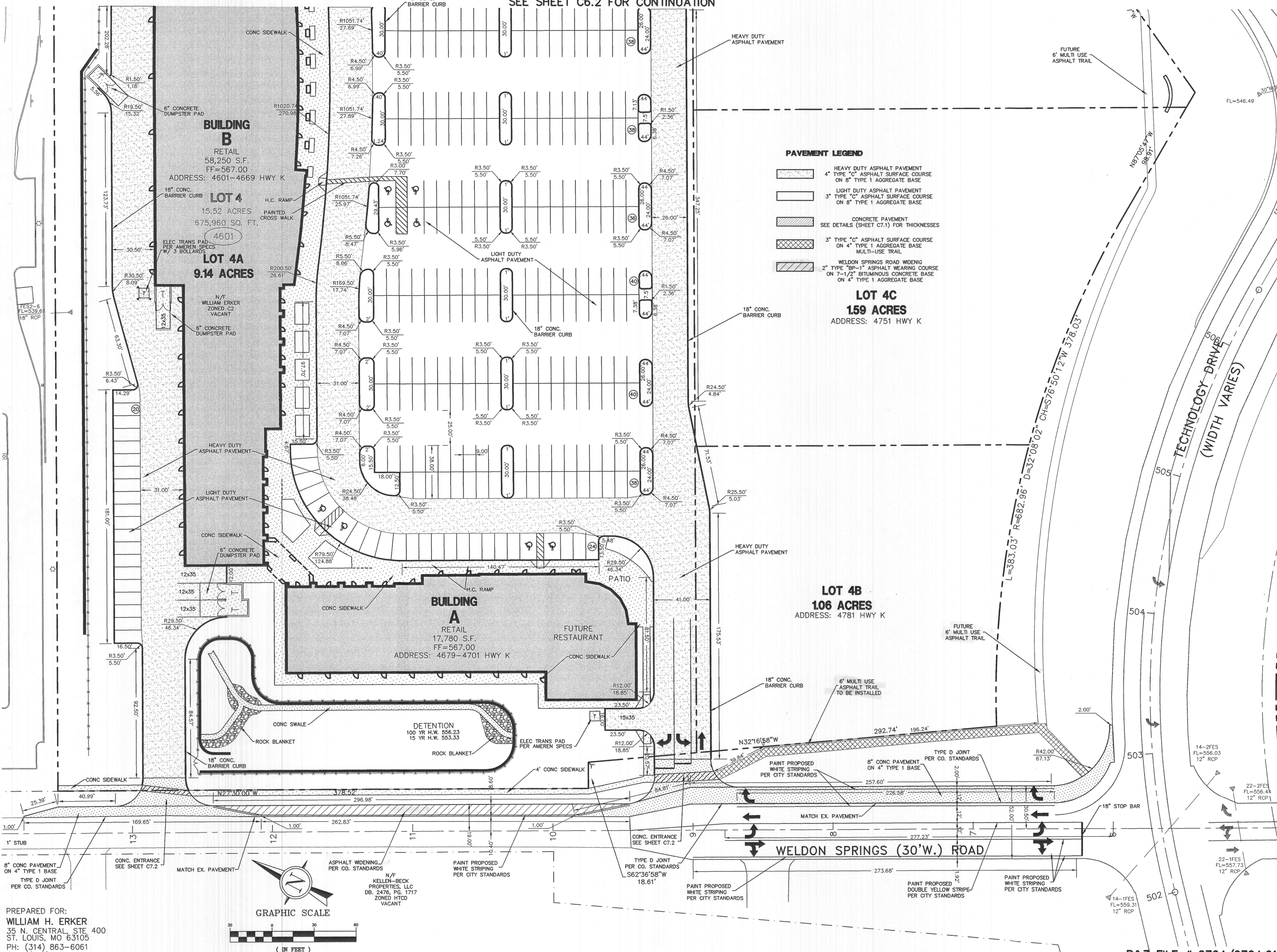


SEE SHEET C6.2 FOR CONTINUATION



PAVEMENT LEGEND

[Pattern]	HEAVY DUTY ASPHALT PAVEMENT 4" TYPE "C" ASPHALT SURFACE COURSE ON 8" TYPE 1 AGGREGATE BASE
[Pattern]	LIGHT DUTY ASPHALT PAVEMENT 3" TYPE "C" ASPHALT SURFACE COURSE ON 8" TYPE 1 AGGREGATE BASE
[Pattern]	CONCRETE PAVEMENT SEE DETAILS (SHEET C7.1) FOR THICKNESSES
[Pattern]	3" TYPE "C" ASPHALT SURFACE COURSE ON 4" TYPE 1 AGGREGATE BASE MULTI-USE TRAIL
[Pattern]	WELDON SPRINGS ROAD WIDENING 2" TYPE "B" ASPHALT WEARING COURSE ON 7-1/2" BITUMINOUS CONCRETE BASE ON 4" TYPE 1 AGGREGATE BASE

LOT 4C
159 ACRES
ADDRESS: 4751 HWY K

LOT 4B
106 ACRES
ADDRESS: 4781 HWY K

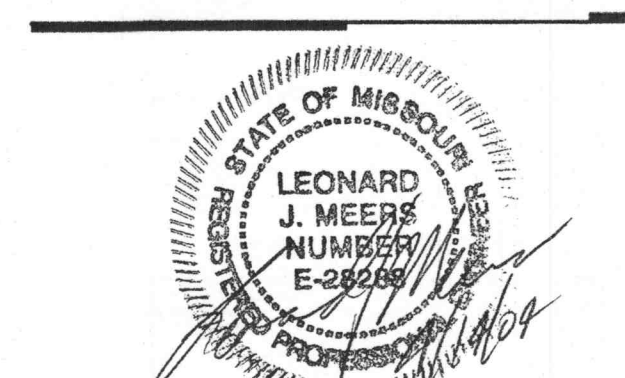
BUILDING B
RETAIL
58,250 S.F.
FF=567.00
ADDRESS: 4601-4669 HWY K

LOT 4
15.52 ACRES
675,960 SQ. FT.
4601

LOT 4A
9.14 ACRES

BUILDING A
RETAIL
17,780 S.F.
FF=567.00
ADDRESS: 4679-4701 HWY K

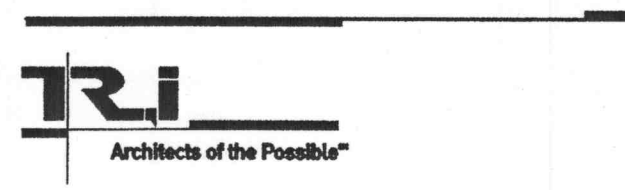
DETECTION
100 YR H.W. 556.23
15 YR H.W. 553.33



- GENERAL CONTRACTOR
ARCHITECT
STRUCTURAL ENGINEER
GEOTECHNICAL ENGINEER
CIVIL ENGINEER
MECHANICAL ENGINEER
PLUMBING ENGINEER
ELECTRICAL ENGINEER
FIRE PROTECTION
- ARCO CONSTRUCTION CO., INC.
THOMAS ROOF INC. ARCHITECTS
IBRAHIM ENGINEERING CORP.
GEOTECHNOLOGY
J.R. GRIMES CONSULTING ENGINEERS
JARRELL MECHANICAL CONTRACTORS
SYSTEM AIRE, INC.
PAYNE CREST ELECTRIC
BI-STALLE FIRE PROTECTION



LABOURÉ CENTRE
4601 HIGHWAY K
O'FALLON, MISSOURI



THOMAS ROOF INC. ARCHITECTS
6251 Maryland Ave. Suite 300
St. Louis, Missouri 63105
314-728-9990
fax-728-9991
www.triarchitect.com

DATE: 02/13/04

REVISIONS

PER CITY, DUCKETT CREEK & MODOT COMMENTS	04/06/04
--	----------

DWG. BY: JLW
PROJECT NO.: 10048
SHEET NO.:

C6.1
GEOMETRICS PLAN

P&Z FILE # 0704/0704.01

J:\1004\10048\PLANS\C6.1-GE0.dwg Tue Apr 13 17:45:22 2004 JLW-H

PREPARED FOR:
WILLIAM H. ERKER
35 N. CENTRAL, STE 400
ST. LOUIS, MO 63105
PH: (314) 863-6061
FAX: (314) 863-6146

