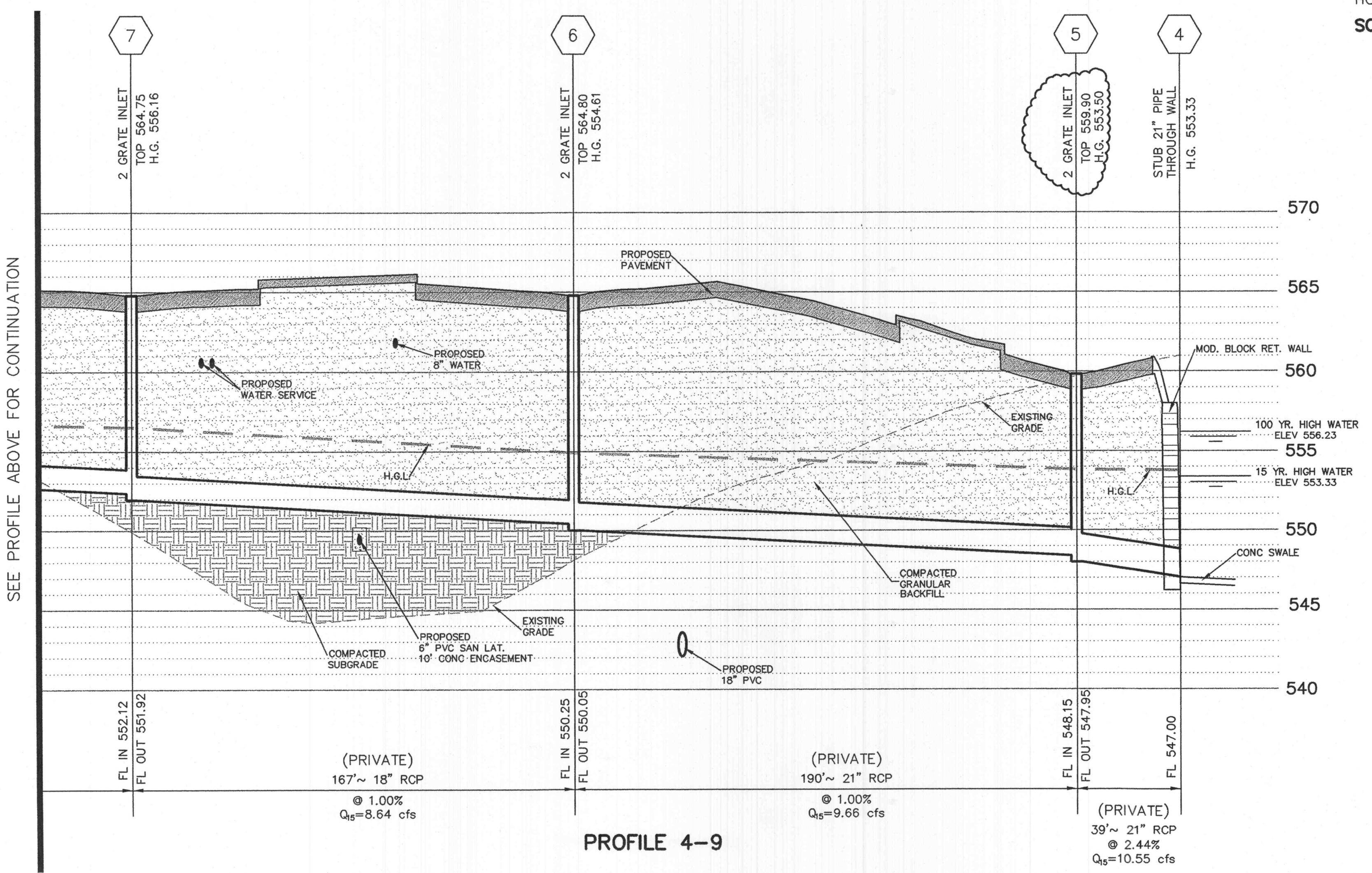


SEE PROFILE BELOW FOR CONTINUATION



5  
VERT.  
30  
HORIZ.  
SCALE:

J:\1004\1004B\PLANS\CB 2-STORM-PRO.dwg Thu Apr 08 05:48:12 2004 JTW-W

PREPARED FOR:  
WILLIAM H. ERKER  
35 N. CENTRAL, STE 400  
ST. LOUIS, MO 63105  
PH: (314) 863-6061  
FAX: (314) 863-6146

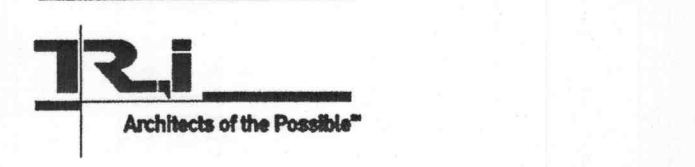
LEONARD J. MEERS  
NUMBER E-28288  
PROFESSIONAL ENGINEER

GENERAL CONTRACTOR  
ARCHITECT  
STRUCTURAL ENGINEER  
GEOTECHNICAL ENGINEER  
CIVIL ENGINEER  
MECHANICAL ENGINEER  
PLUMBING ENGINEER  
ELECTRICAL ENGINEER  
FIRE PROTECTION

ARCO CONSTRUCTION CO., INC.  
THOMAS ROOF INC. ARCHITECTS  
IBRAHIM ENGINEERING CORP.  
GEOTECHNOLOGY  
J.R. GRIMES CONSULTING ENGINEERS  
JARRELL MECHANICAL CONTRACTORS  
SYSTEM AIRE, INC.  
PAYNE CREST ELECTRIC  
BI-STATE FIRE PROTECTION



**LABOURÉ CENTRE**  
4601 HIGHWAY K  
O'FALLON, MISSOURI



THOMAS ROOF INC. ARCHITECTS  
8251 Maryland Ave. Suite 300  
St. Louis, Missouri 63105  
314-726-9990  
314-726-9991  
www.triarchitects.com

DATE: 02/13/04

REVISIONS

NO.	DESCRIPTION	DATE
1	PER CITY, DUCKETT CREEK & MODOT COMMENTS	04/06/04

DWG. BY: JLW  
PROJECT NO.: 1004B  
SHEET NO.:

**C8.2**  
STORM SEWER PROFILES

P&Z FILE # 0704/0704.01