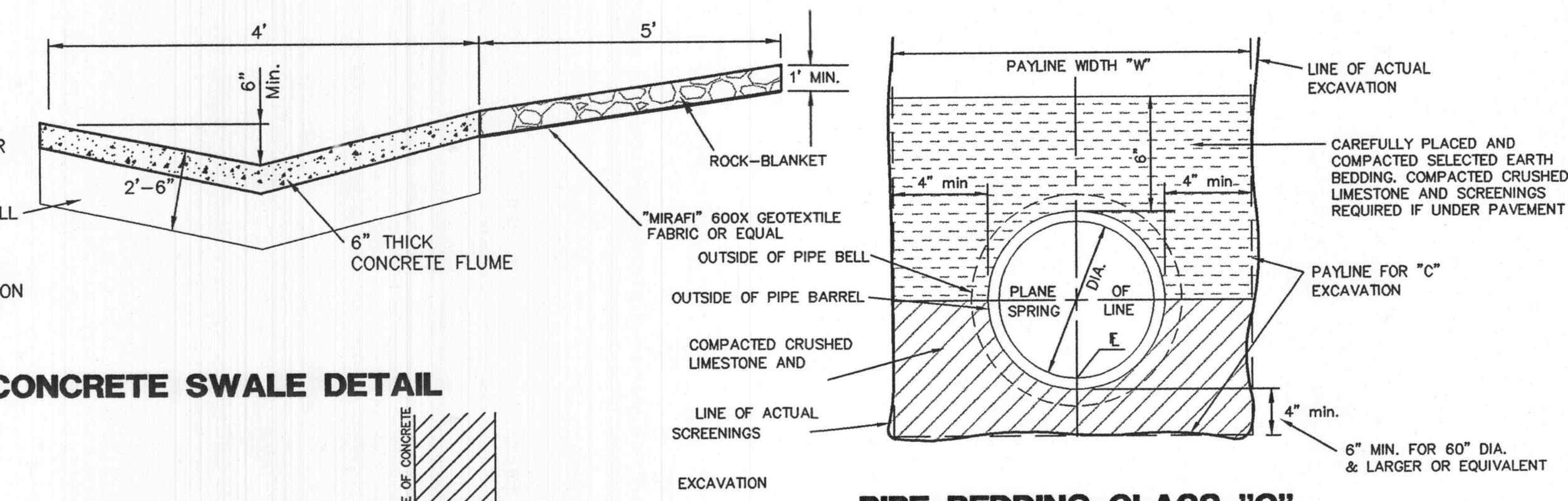
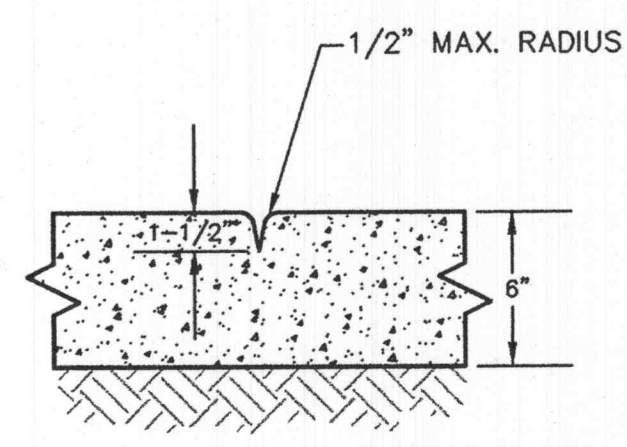


**DETENTION STRUCTURE DETAIL**

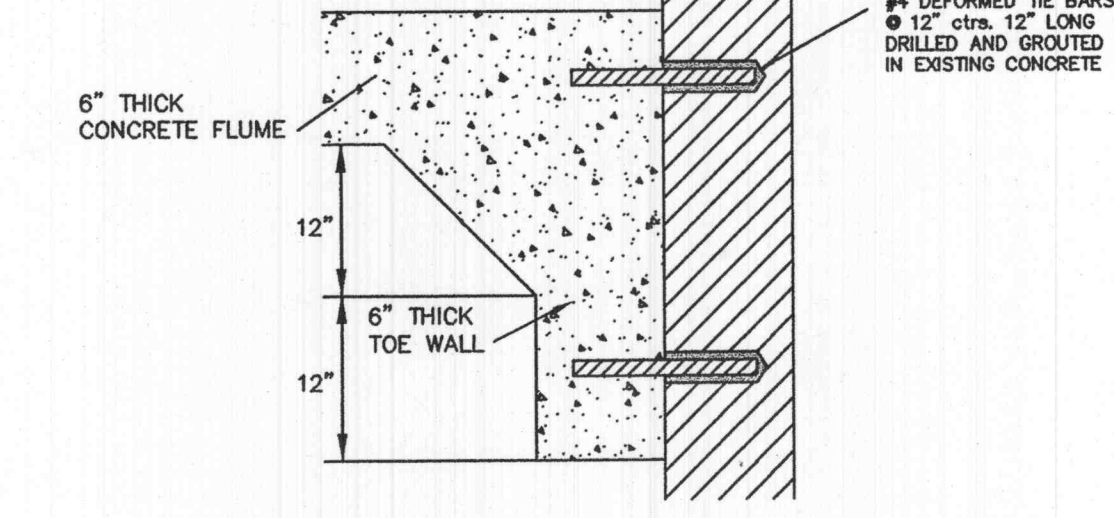
- NOTES:**
1. CONCRETE SHALL BE 3000 p.s.i. STRENGTH AT 28 DAYS.
  2. TOE WALL SHALL BE CONSTRUCTED AT BOTH UPSTREAM AND DOWNSTREAM ENDS.
  3. 1/2" PREFORMED FIBER JOINT WITH JOINT SEALER TO BE CONSTRUCTED AS TRANSVERSE JOINT AT 50' INTERVALS.
  4. MINIMUM CHANNEL SLOPE TO BE 0.5%.
  5. DISTURBED AREAS TO BE SEEDED AND MULCHED UPON COMPLETION OF CONSTRUCTION AND EROSION CONTROL DEVICES INSTALLED PER DIRECTION OF OWNER OR ENGINEER.
  6. CONCRETE SWALE TO BE DOWLED INTO THE DETENTION STRUCTURE USING #4 DOWELS.
  7. CONTROL JOINTS SHALL BE HAND-TOOLED OR SAWCUT AT A MAXIMUM OF 15' o.c. AND AT ANY/ALL P.C.'S AND P.T.'S.



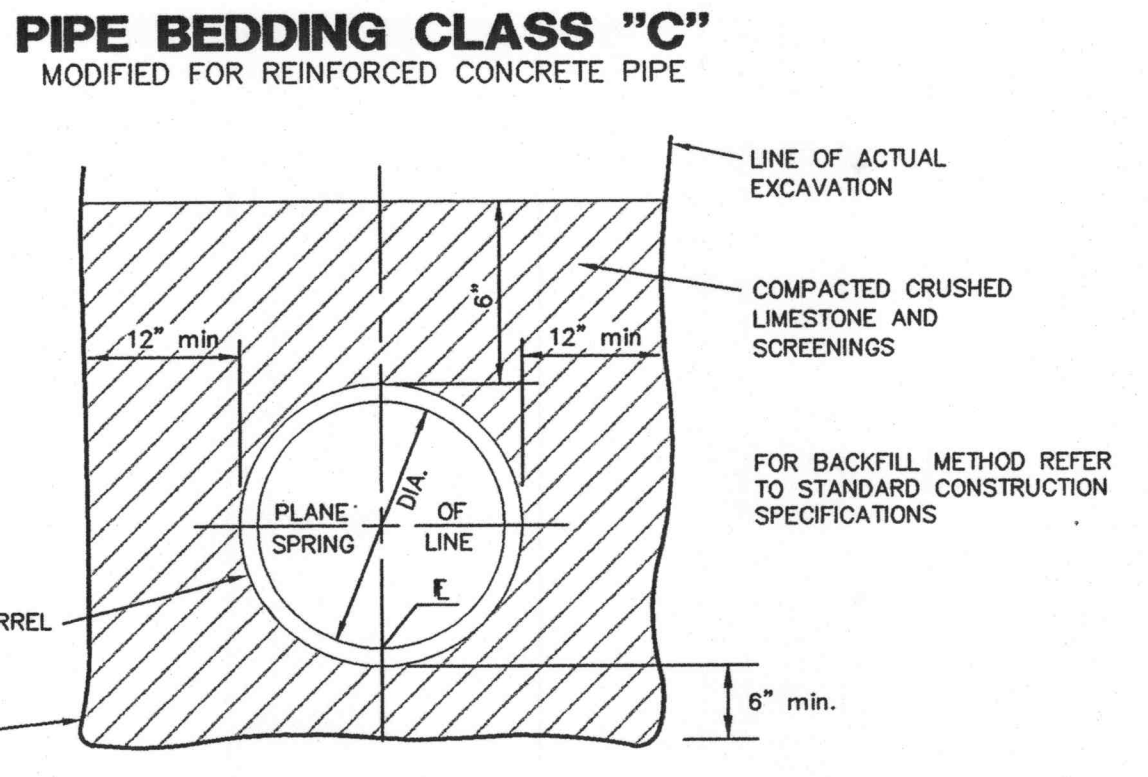
**CONCRETE SWALE DETAIL**



**CONTROL JOINT DETAIL**



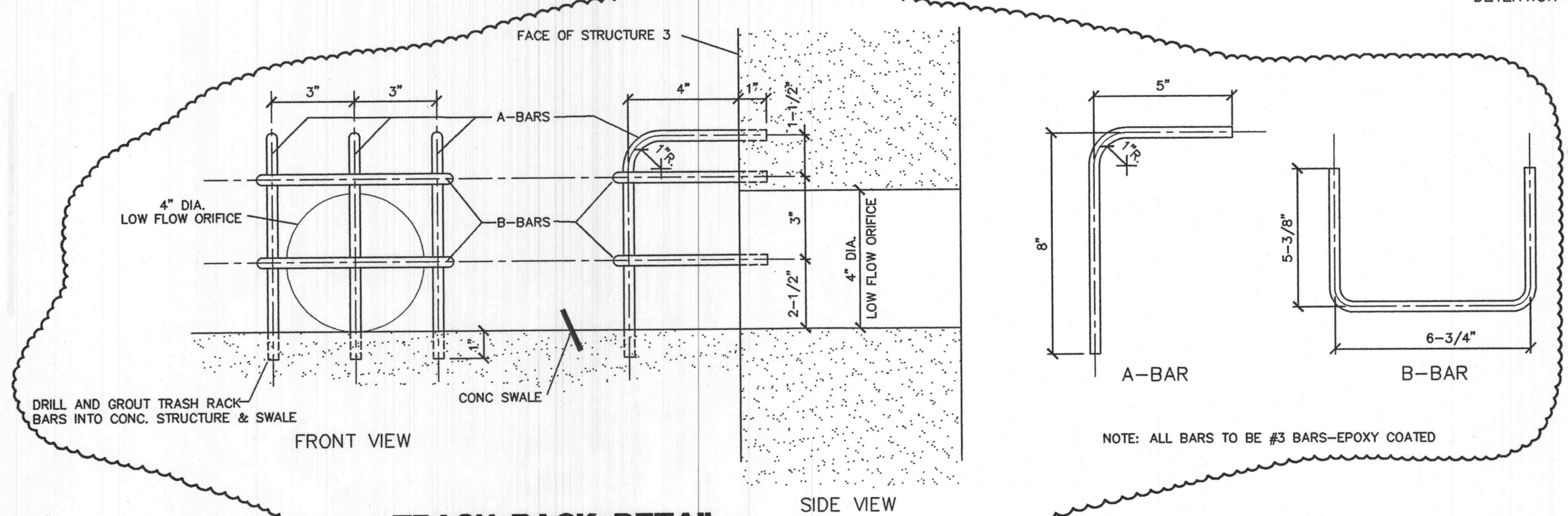
**DOWELLED FLUME CONNECTION**



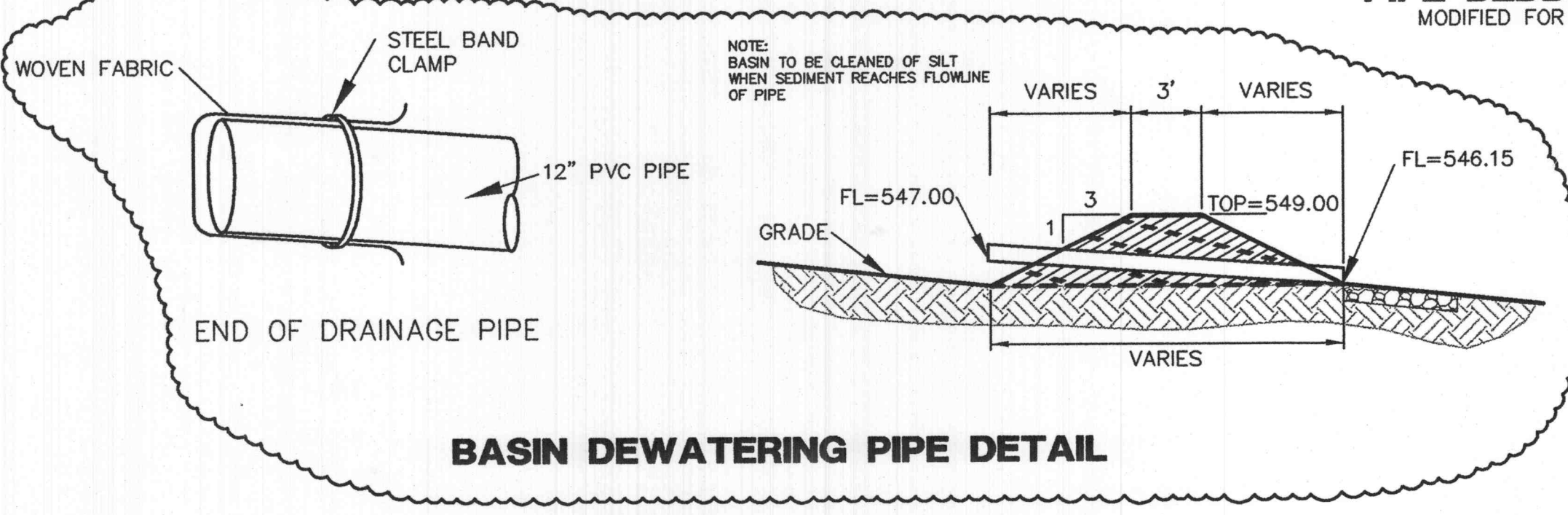
**PIPE BEDDING CLASS "C"**



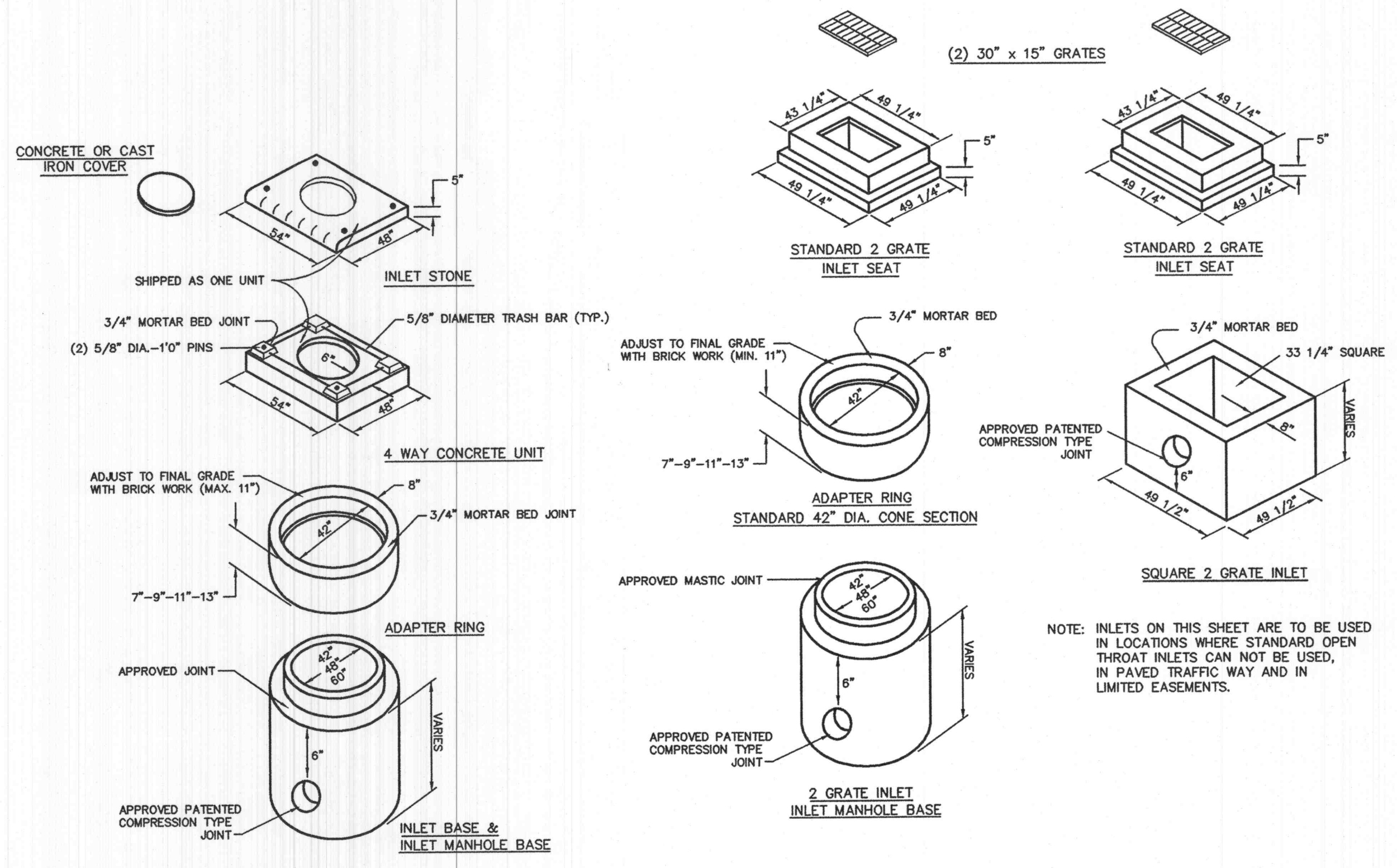
**PIPE BEDDING CLASS "C"**



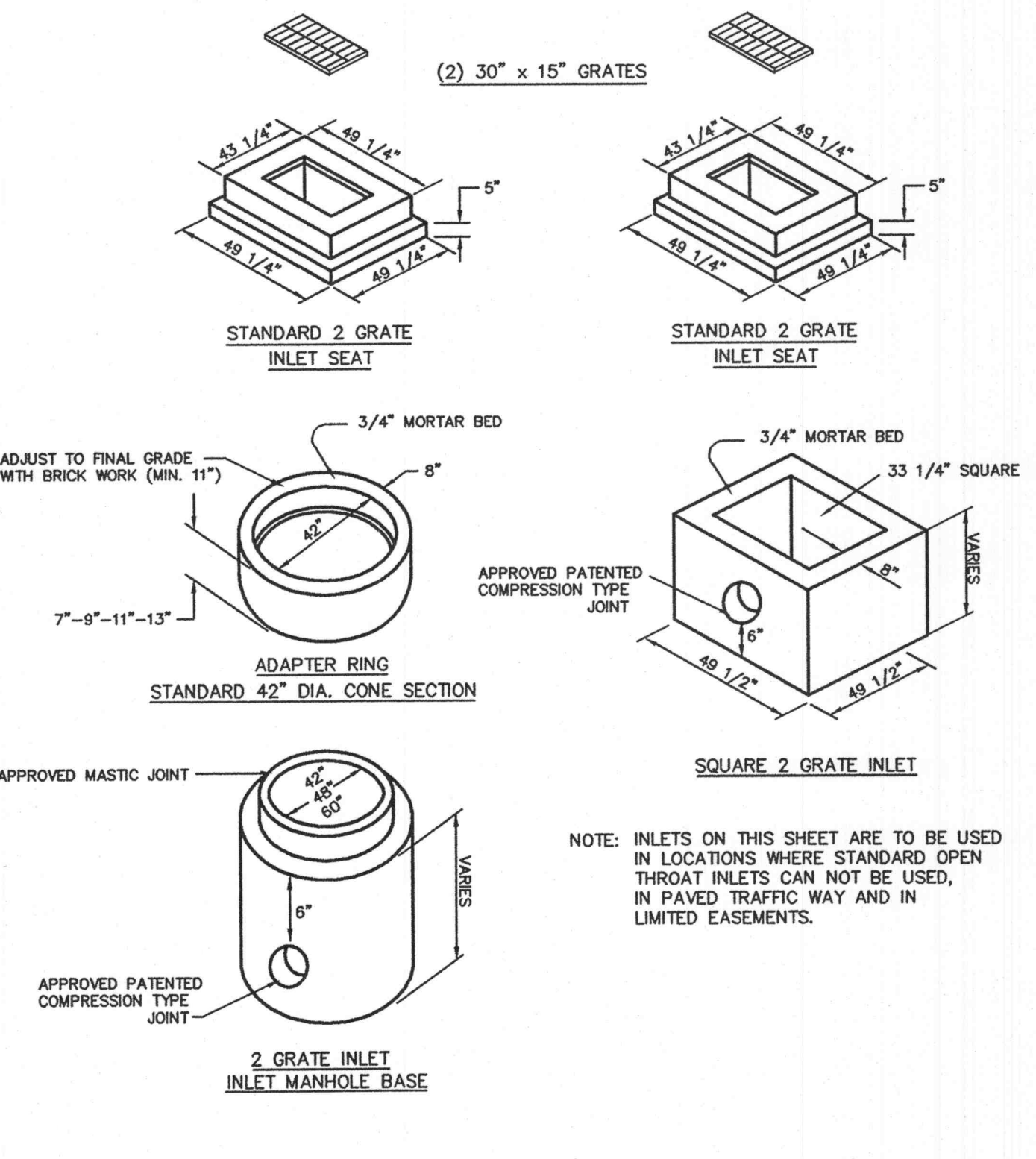
**TRASH RACK DETAIL**



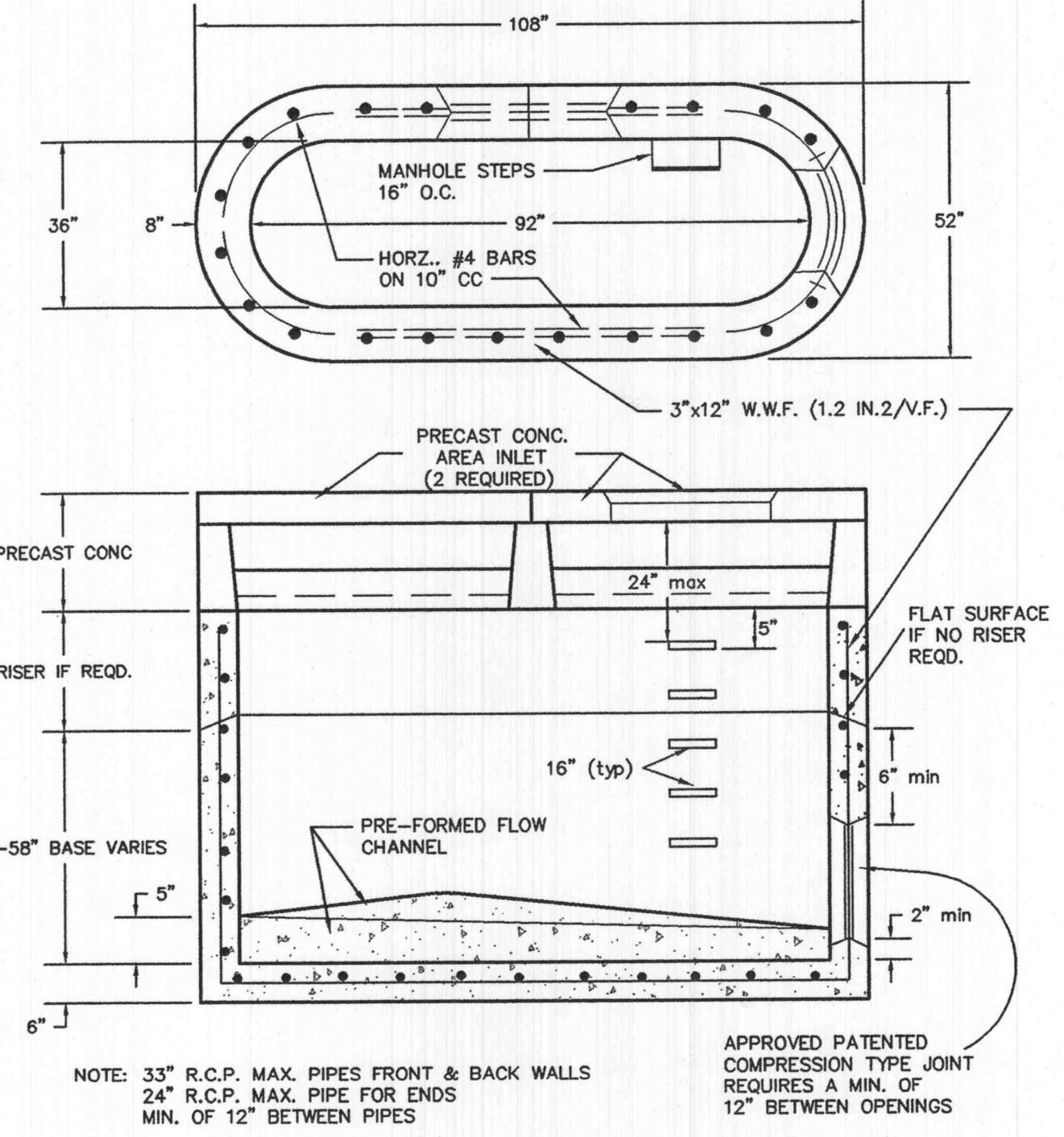
**BASIN DEWATERING PIPE DETAIL**



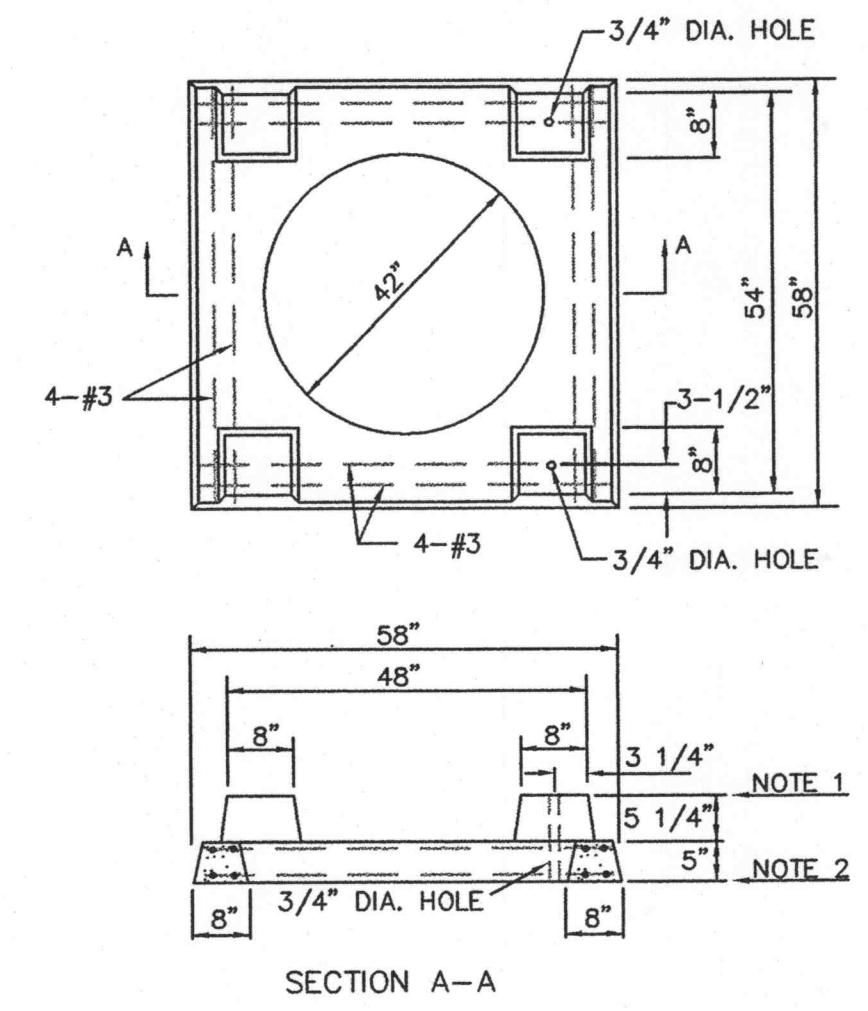
**AREA INLET PRECAST CONCRETE**



**2 GRATE INLETS PRE-CAST CONCRETE**



**DOUBLE AREA INLET PRECAST CONCRETE**



**PRECAST CONCRETE UNIT FOR 4-WAY AREA INLET**

NOTE: COMPACTED ROCK BACKFILL SHALL BE PLACED AROUND THE DISTURBED GROUND AT DROP STRUCTURES

- NOTES:**
1. SET STANDARD INLET STONE IN 3/4" MORTAR BED AND DOWEL WITH 5/8" 1'-0" LONG PINS AND GROUT.
  2. RAISE TO FINAL GRADE WITH COURSES OF BRICK AND SET THE UNIT TO BASE WITH 3/4" MORTAR BED.
  3. THIS UNIT TO BE USED WITH 42" I.D. BASE.
  4. 4000 P.S.I. CONCRETE IS REQUIRED.

**ARCO**  
Construction Company, Inc.

GENERAL CONTRACTOR  
ARCHITECT  
STRUCTURAL ENGINEER  
GEOTECHNICAL ENGINEER  
CIVIL ENGINEER  
MECHANICAL ENGINEER  
PLUMBING ENGINEER  
ELECTRICAL ENGINEER  
FIRE PROTECTION

ARCO CONSTRUCTION CO., INC.  
THOMAS ROOF INC. ARCHITECTS  
IBRAHIM ENGINEERING CORP.  
GEOTECHNOLOGY  
J.R. GRIMES CONSULTING ENGINEERS  
JARRELL MECHANICAL CONTRACTORS  
SYSTEM AIRE, INC.  
PAYNE CREST ELECTRIC  
BI-STATE FIRE PROTECTION

**LABOURÉ CENTRE**  
4601 HIGHWAY K  
O'FALLON, MISSOURI

**TR**  
Architects of the Possible

THOMAS ROOF INC. ARCHITECTS  
8251 Maryland Ave. Suite 300  
St. Louis, Missouri 63105  
314-728-9990  
fax: 728-9991  
www.trarchitects.com

DATE: 02/13/04  
REVISIONS:  
PER CITY, DUCKETT CREEK & MODOT COMMENTS 04/06/04  
PER CITY COMMENTS 04/28/04

DWG. BY: JW  
PROJECT NO.: 1004B  
SHEET NO.:  
**C8.5**  
STORM SEWER DETAILS

J:\1004\1004B\PLANS\CB\_5-STORM-DETAILS.dwg Wed Apr 28 10:36:14 2004 JTW-Y

PREPARED FOR:  
WILLIAM H. ERKER  
35 N. CENTRAL, STE 100  
ST. LOUIS, MO 63105  
PH: (314) 863-6061  
FAX: (314) 863-6146

P&Z FILE # 0704/0704.01