

ARCHITECT  
 CIVIL ENGINEER  
 THOMAS ROOF INC. ARCHITECTS  
 J.R. GRIMES CONSULTING ENGINEERS, INC.

**ARCO**  
 Construction Company, Inc.

**LABOURE CENTRE**  
 N.W.C. HWY K &  
 TECHNOLOGY DRIVE  
 O'FALLON, MISSOURI



THOMAS ROOF INC. ARCHITECTS  
 6351 Maryland Ave. Suite 300  
 St. Louis, Missouri 63105  
 514-726-9990  
 Fax: 726-9991  
 www.tforchitects.com  
 © Copyright 2004

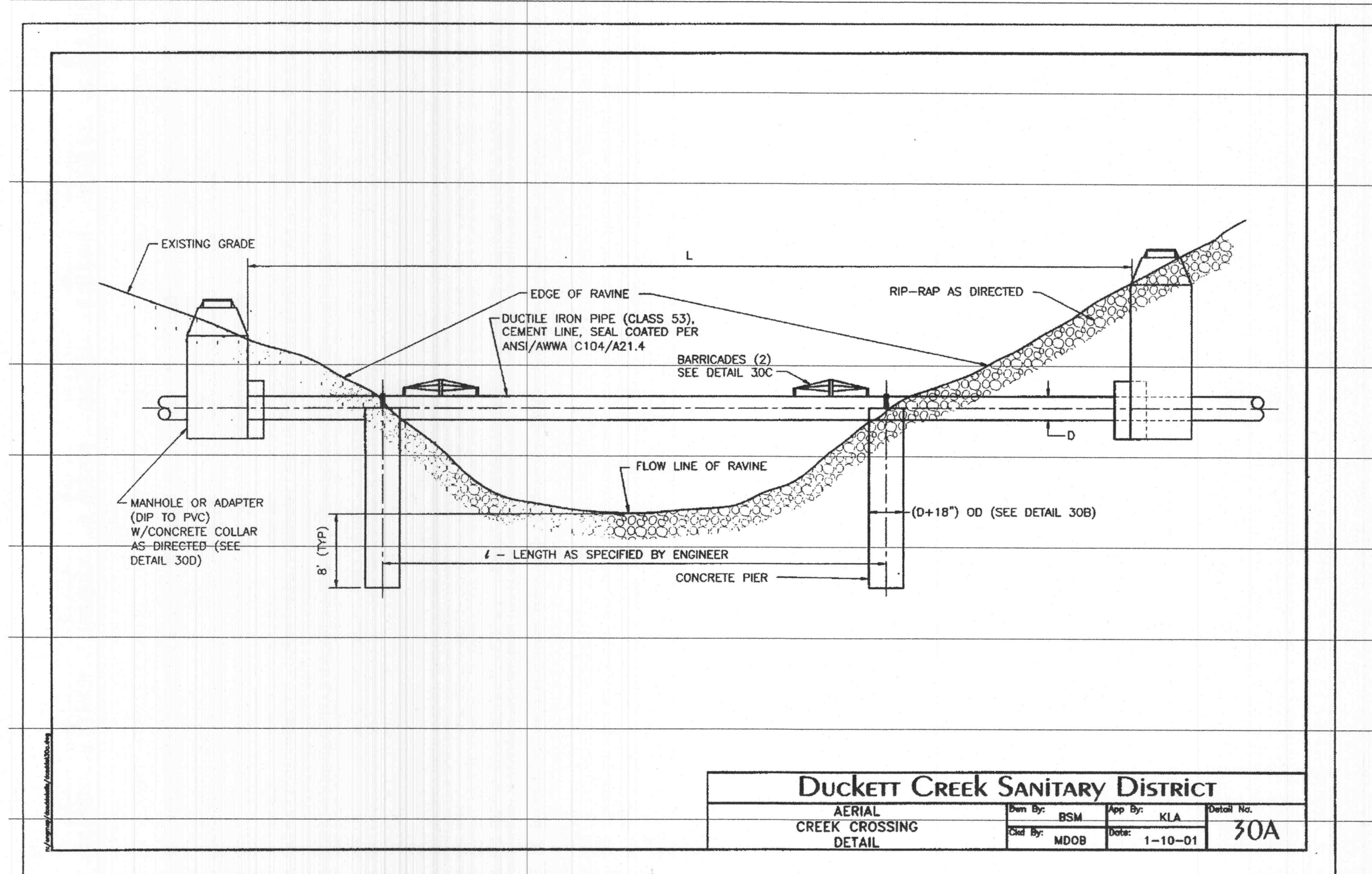
DATE: 02/13/04

REVISIONS

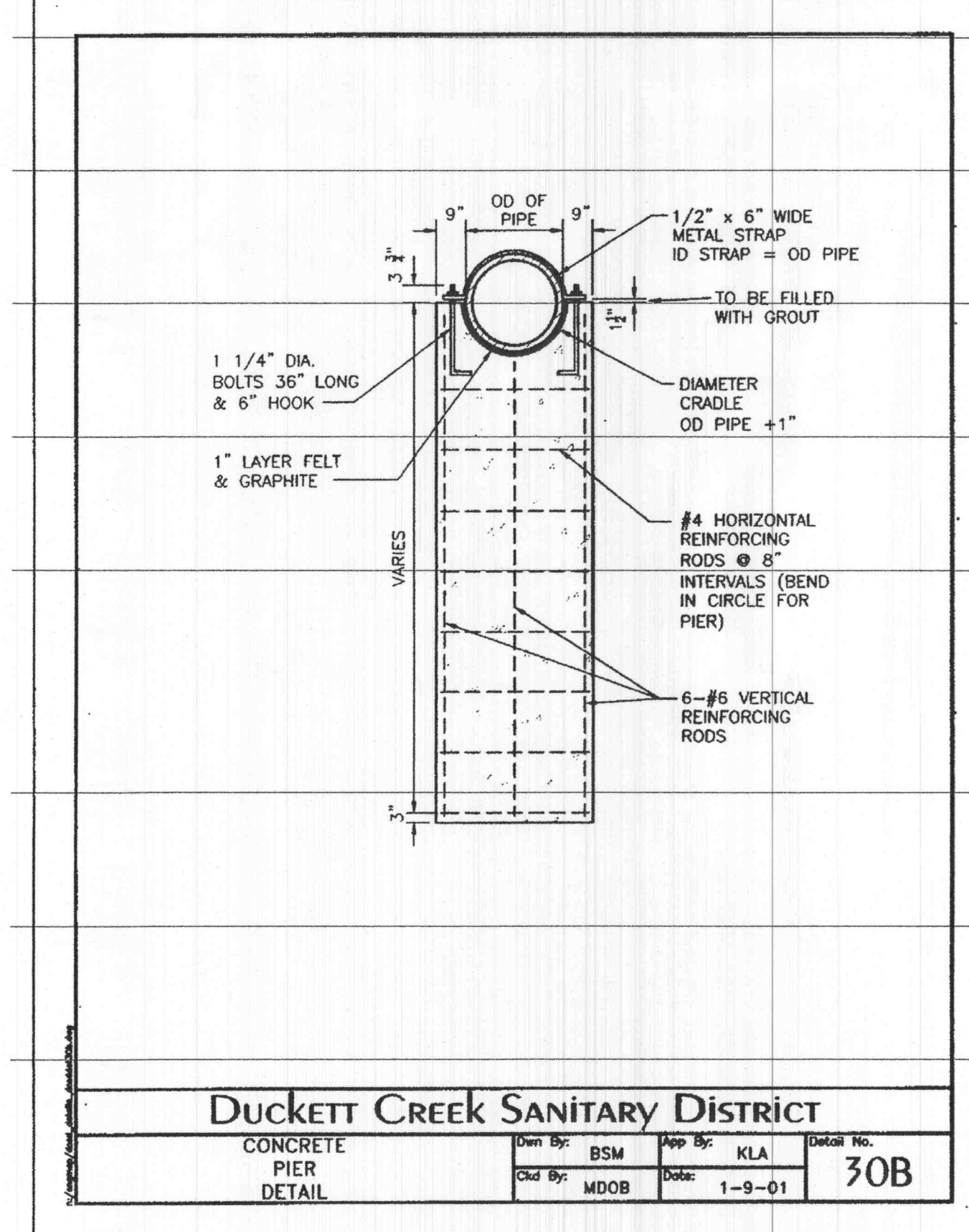

DWG. BY: J.L.W.  
 PROJECT NO.: 10048  
 SHEET NO.:

**C9.6**  
 SANITARY SEWER DETAILS

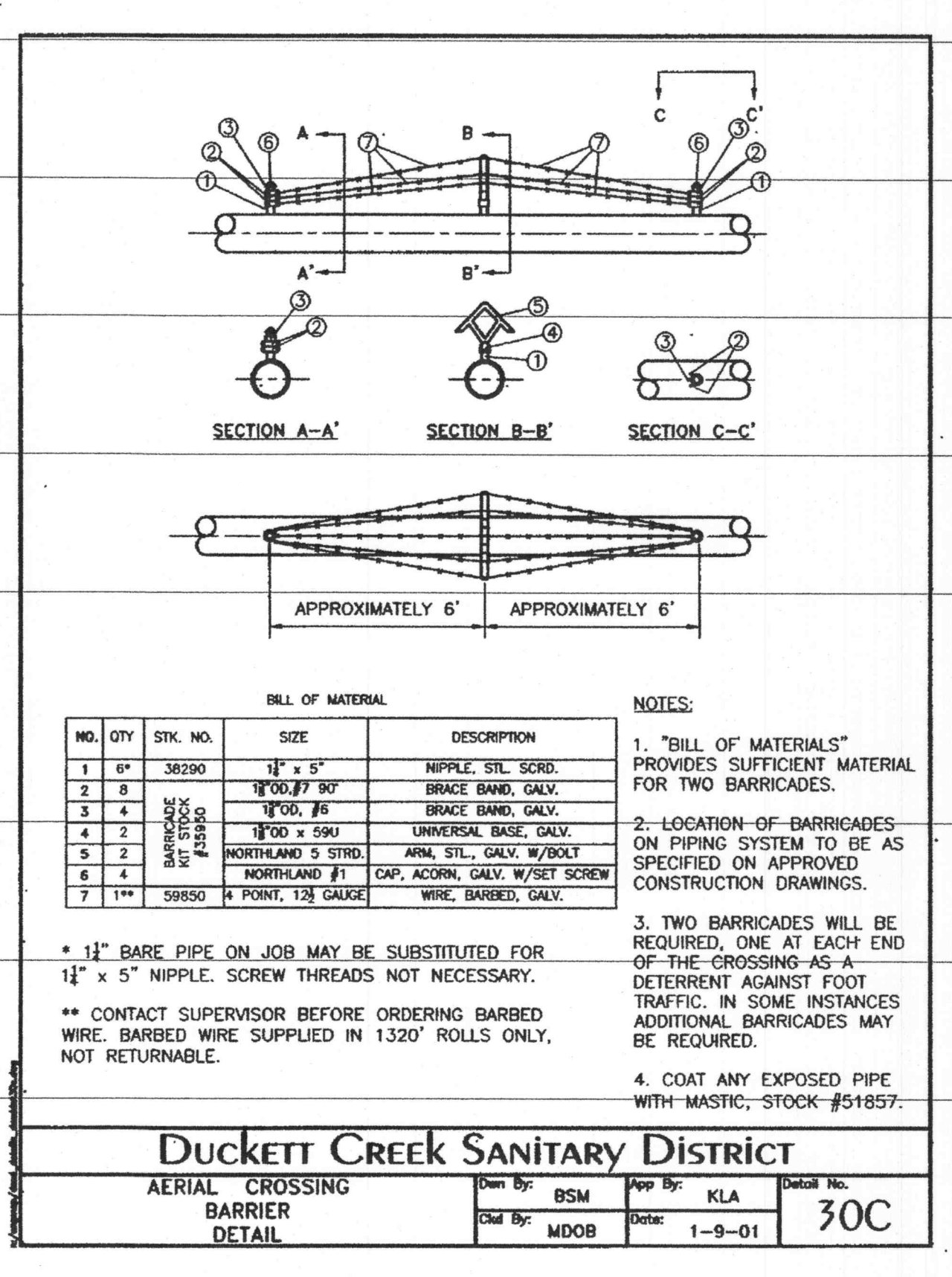
P&Z FILE # 0704/0704.01



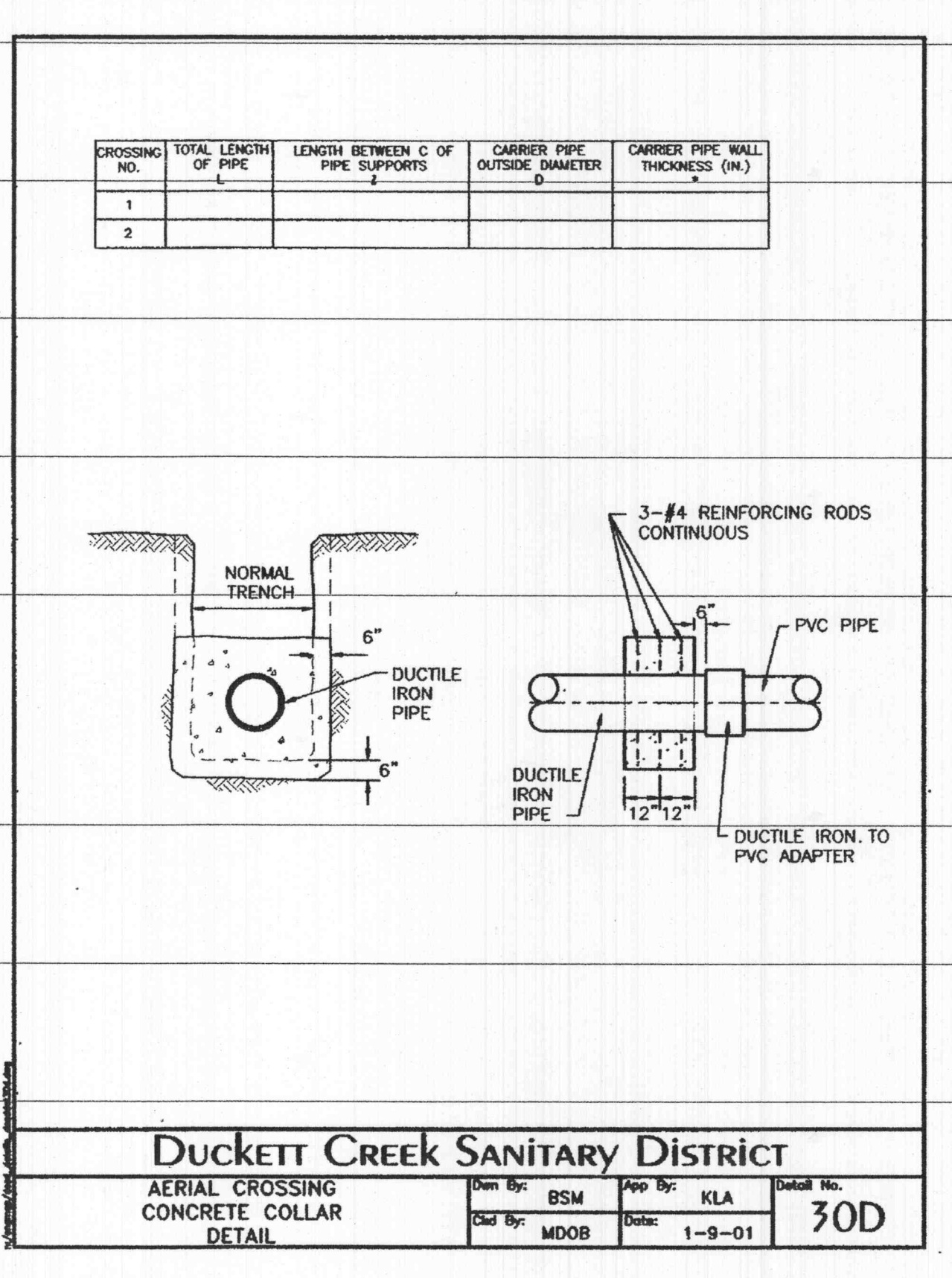
**Duckett Creek Sanitary District**  
 AERIAL CREEK CROSSING  
 DETAIL  
 Des. By: BSM App. By: KLA Detail No.: 30A  
 Cld. By: MDOB Date: 1-10-01



**Duckett Creek Sanitary District**  
 CONCRETE PIER  
 DETAIL  
 Des. By: BSM App. By: KLA Detail No.: 30B  
 Cld. By: MDOB Date: 1-9-01



**Duckett Creek Sanitary District**  
 AERIAL CROSSING BARRIER  
 DETAIL  
 Des. By: BSM App. By: KLA Detail No.: 30C  
 Cld. By: MDOB Date: 1-9-01



**Duckett Creek Sanitary District**  
 AERIAL CROSSING CONCRETE COLLAR  
 DETAIL  
 Des. By: BSM App. By: KLA Detail No.: 30D  
 Cld. By: MDOB Date: 1-9-01

J:\1004\1004B\PLANS\CS 6-SAN-DETAILS.dwg Tue Feb 17 07:09:24 2004 JTM-W

PREPARED FOR:  
 WILLIAM H. ERKER  
 35 N. CENTRAL STE 400  
 ST. LOUIS, MO 63105  
 PH: (314) 863-6061  
 FAX: (314) 863-6146