

15 YEAR STORM

STRUCTURE	AREA (ACRES)	P.I.	Q (cfs)	AREA (ACRES)	P.I.	Q (cfs)	TOTAL Q (cfs)
1	0.85	1.87	1.59	0.00	3.85	0.00	1.59
2	0.00	1.87	0.00	0.00	3.85	0.00	0.00
3	0.00	1.87	0.00	0.99	3.85	3.81	3.81
4	0.00	1.87	0.00	0.00	3.85	0.00	0.00
5	0.00	1.87	0.00	0.23	3.85	0.89	0.89
6	0.00	1.87	0.00	0.26	3.85	1.02	1.02
7	0.00	1.87	0.00	0.66	3.85	2.55	2.55
8	0.00	1.87	0.00	0.72	3.85	2.76	2.76
9	0.00	1.87	0.00	0.86	3.85	3.33	3.33
10	0.00	1.87	0.00	0.00	3.85	0.00	0.00
11	0.00	1.87	0.00	0.00	3.85	0.00	0.00
12	0.00	1.87	0.00	0.16	3.85	0.60	0.60
13	0.00	1.87	0.00	1.71	3.85	6.58	6.58
14	0.00	1.87	0.00	0.78	3.85	3.02	3.02
15	0.00	1.87	0.00	0.82	3.85	3.15	3.15
16	0.00	1.87	0.00	0.84	3.85	3.23	3.23
17	0.00	1.87	0.00	0.21	3.85	0.80	0.80
18	0.00	1.87	0.00	0.24	3.85	0.94	0.94
19	0.00	1.87	0.00	1.20	3.85	4.62	4.62
20	0.00	1.87	0.00	2.84	3.85	10.92	10.92
21	0.00	1.87	0.00	0.68	3.85	2.61	2.61
22	0.00	1.87	0.00	0.57	3.85	2.20	2.20
23	0.00	1.87	0.00	0.88	3.85	3.39	3.39
24	0.00	1.87	0.00	2.58	3.85	9.94	9.94

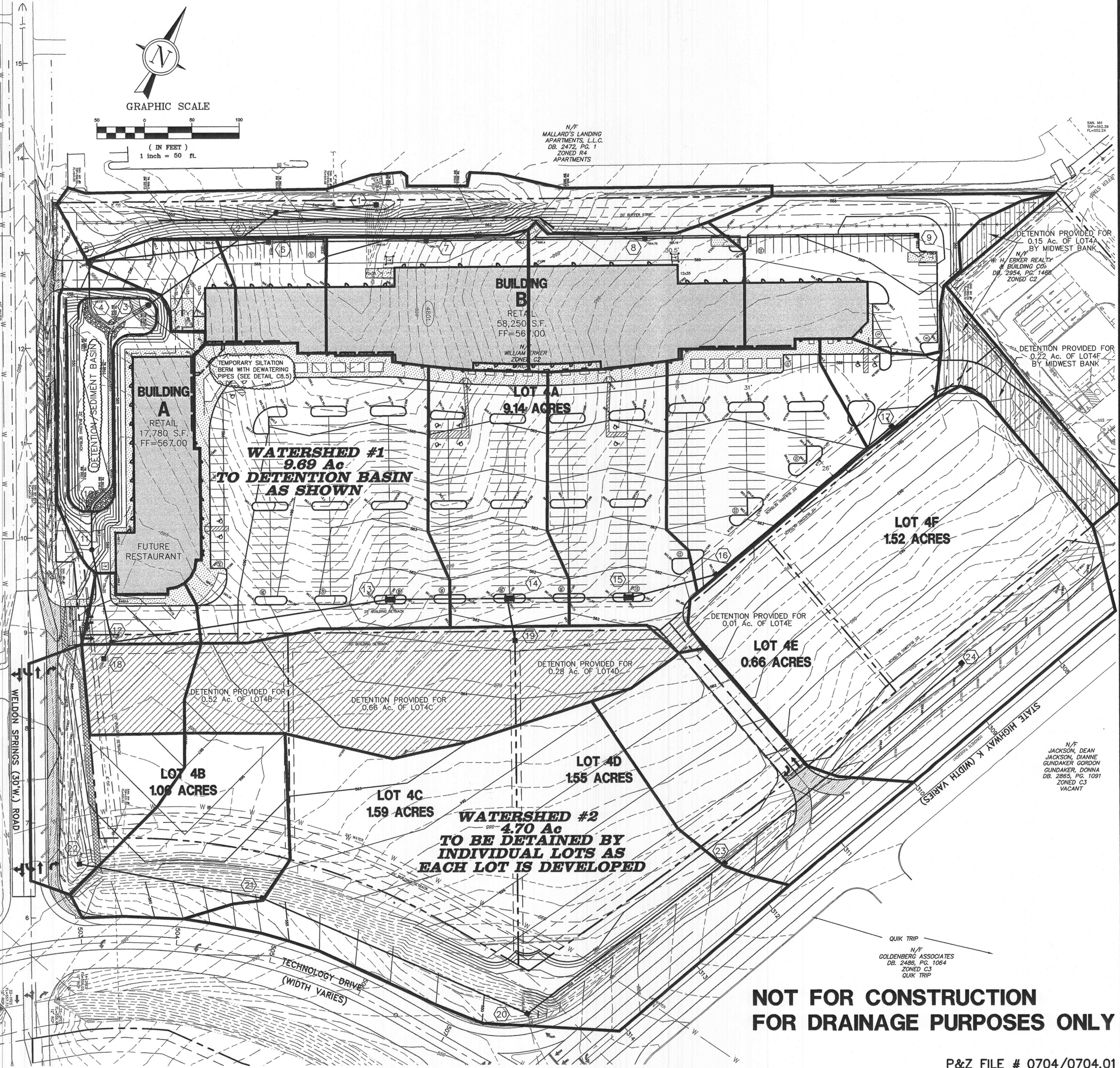
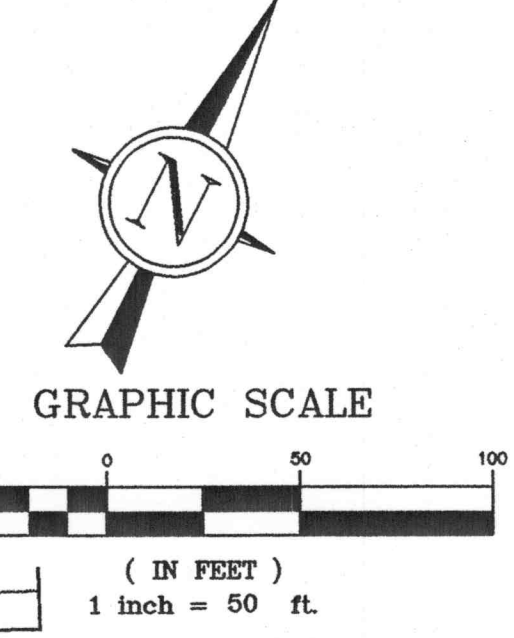
AREA #1 DEVELOPED DRAINAGE DATA

A= 9.69 Ac.
 CN= 95
 $i_2 = 3.50$ in/hr
 $i_{15} = 5.20$ in/hr
 $i_{25} = 5.70$ in/hr
 $i_{100} = 7.20$ in/hr
 $T_c = 0.36$ HR
 $Q_2 = 27.90$ cfs
 $Q_{15} = 42.78$ cfs
 $Q_{25} = 47.13$ cfs
 $Q_{100} = 60.11$ cfs

BYPASS DEVELOPED DRAINAGE DATA

A= 0.76 Ac.
 CN= 79
 $i_2 = 3.50$ in/hr
 $i_{15} = 5.20$ in/hr
 $i_{25} = 5.70$ in/hr
 $i_{100} = 7.20$ in/hr
 $T_c = 0.37$ HR
 $Q_2 = 1.19$ cfs
 $Q_{15} = 2.29$ cfs
 $Q_{25} = 2.63$ cfs
 $Q_{100} = 3.66$ cfs

PER THE DETENTION ROUTING REPORT



PREPARED FOR:
 WILLIAM H. ERKER
 35 N. CENTRAL, STE 400
 ST. LOUIS, MO 63105
 PH: (314) 863-6061
 FAX: (314) 863-6146

**NOT FOR CONSTRUCTION
 FOR DRAINAGE PURPOSES ONLY**

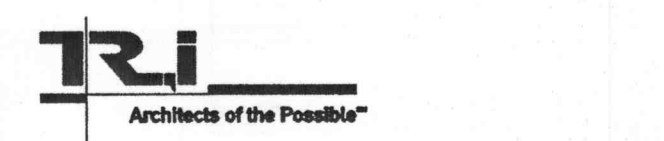
P&Z FILE # 0704/0704.01



- GENERAL CONTRACTOR
- ARCHITECT
- STRUCTURAL ENGINEER
- GEOTECHNICAL ENGINEER
- CIVIL ENGINEER
- MECHANICAL ENGINEER
- PLUMBING ENGINEER
- ELECTRICAL ENGINEER
- FIRE PROTECTION



LABOURÉ CENTRE
 4601 HIGHWAY K
 O'FALLON, MISSOURI



THOMAS ROOF INC - ARCHITECTS
 8251 Maryland Ave. Suite 300 314-728-9990
 St. Louis, Missouri 63105 fax-728-9991
 www.thomasroof.com
 © Copyright 2004

DATE: 02/13/04

REVISIONS

PER CITY, DUCKETT CREEK	
& MODOT COMMENTS	04/06/04
PER CITY COMMENTS	04/28/04

DWG. BY: JLW
 PROJECT NO.: 1004B
 SHEET NO.:

C11.1
 DRAINAGE AREA MAP

J:\1004\1004B\PLANS\C11.1-DRAINAGE AREA MAP.dwg Tue Apr 27 17:59:34 2004 JLM-W