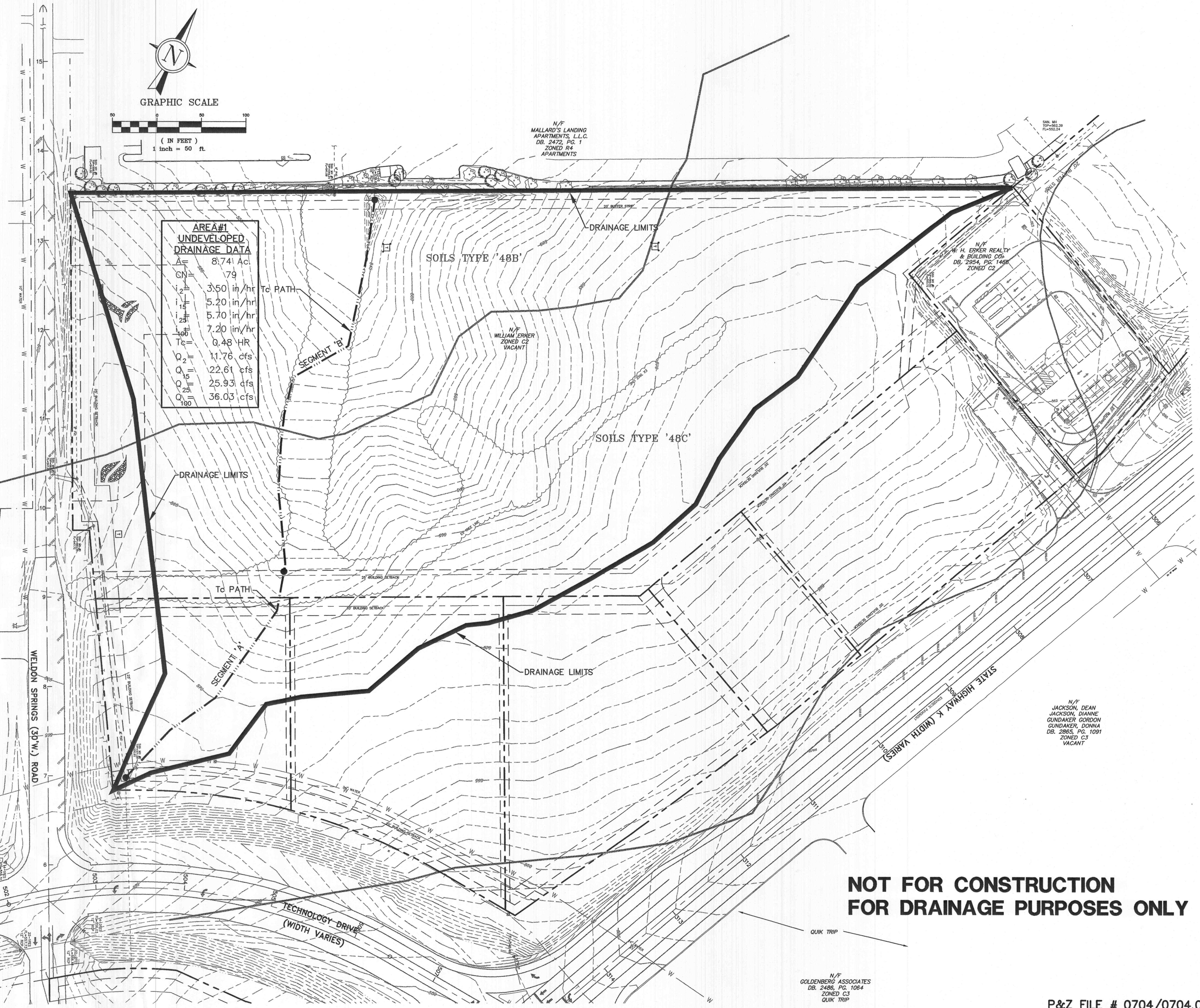


J:\1004\1004\PLANS\DEFINITION\CI-EX-DIM.dwg Mod Apr 07 15:45:38 2004 JTH-W

PREPARED FOR:
WILLIAM H. ERKER
35 N. CENTRAL, STE 400
ST. LOUIS, MO 63105
PH: (314) 863-6061
FAX: (314) 863-6146

N/F
KELLEN-BECK
PROPERTIES, LLC
DB. 2476, PG. 1717
ZONED HTCD
VACANT



**AREA #1
UNDEVELOPED
DRAINAGE DATA**

A	=	8.741 Ac.
CN	=	79
I_2	=	3.50 in/hr
I_1	=	5.20 in/hr
I_{25}	=	5.70 in/hr
I_{100}	=	7.20 in/hr
T_c	=	0.48 HR
Q_2	=	11.76 cfs
Q_{15}	=	22.61 cfs
Q_{25}	=	25.93 cfs
Q_{100}	=	36.03 cfs

N/F
MALLARD'S LANDING
APARTMENTS, L.L.C.
DB. 2472, PG. 1
ZONED R4
APARTMENTS

N/F
W. H. ERKER REALTY
& BUILDING CO.
DB. 2954, PG. 1468
ZONED C2

N/F
WILLIAM ERKER
ZONED C2
VACANT

N/F
JACKSON, DEAN
JACKSON, DIANNE
GUNDAKER GORDON
GUNDAKER, DONNA
DB. 2865, PG. 1091
ZONED C3
VACANT

N/F
GOLDENBERG ASSOCIATES
DB. 2486, PG. 1064
ZONED C3
QUIK TRIP

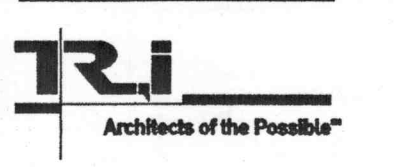
**NOT FOR CONSTRUCTION
FOR DRAINAGE PURPOSES ONLY**

- GENERAL CONTRACTOR
- ARCHITECT
- STRUCTURAL ENGINEER
- GEOTECHNICAL ENGINEER
- CIVIL ENGINEER
- MECHANICAL ENGINEER
- PLUMBING ENGINEER
- ELECTRICAL ENGINEER
- FIRE PROTECTION

- ARCO CONSTRUCTION CO., INC.
- THOMAS ROOF INC. ARCHITECTS
- IBRAHIM ENGINEERING CORP.
- GEOTECHNOLOGY
- J.R. GRIMES CONSULTING ENGINEERS
- JARRELL MECHANICAL CONTRACTORS
- PAYNE CREST ELECTRIC
- BI-STATE FIRE PROTECTION



LABOURÉ CENTRE
4601 HIGHWAY K
O'FALLON, MISSOURI



THOMAS ROOF INC. ARCHITECTS
6151 Maryland Ave. Suite 300
St. Louis, Missouri 63105
© Copyright 2004 www.thomastroof.com
314-728-9990
fax-728-9991

DATE **02/13/04**

REVISIONS

DWG. BY **JLW**
PROJECT NO. **1004B**
SHEET NO.

C1 of 2
EXISTING DRAINAGE AREA MAP

P&Z FILE # 0704/0704.01