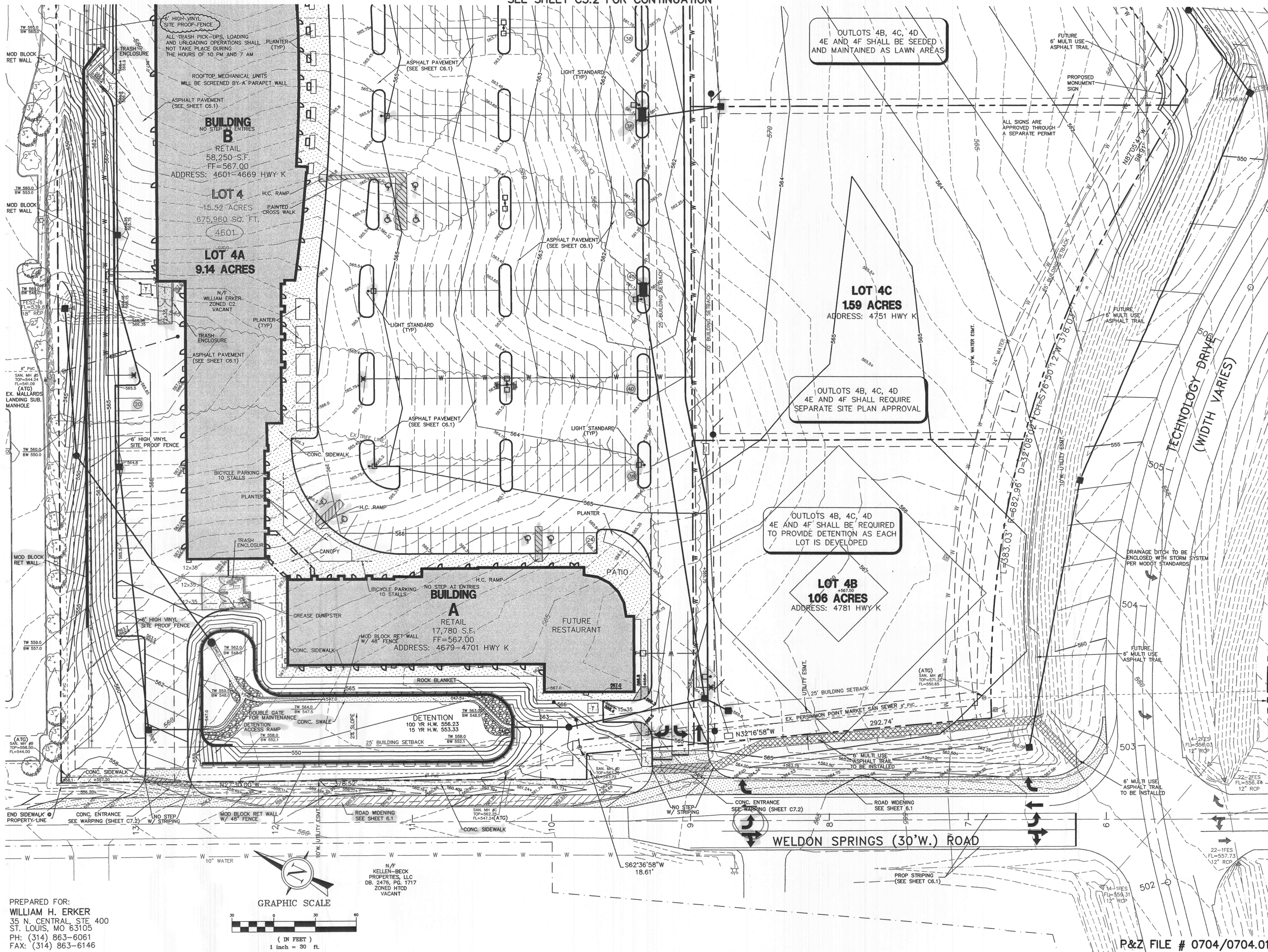


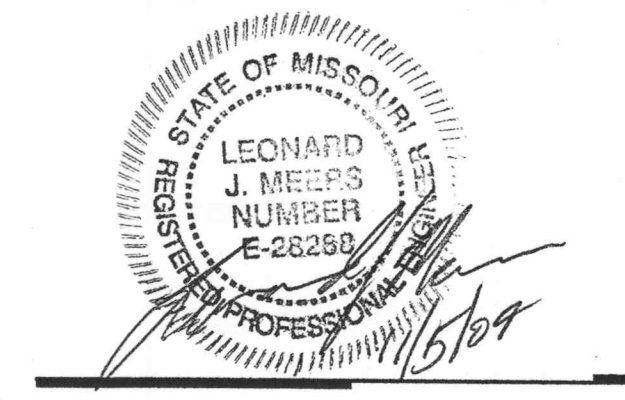
SEE SHEET C3.2 FOR CONTINUATION



OUTLOTS 4B, 4C, 4D  
4E AND 4F SHALL BE SEEDED  
AND MAINTAINED AS LAWN AREAS

OUTLOTS 4B, 4C, 4D  
4E AND 4F SHALL REQUIRE  
SEPARATE SITE PLAN APPROVAL

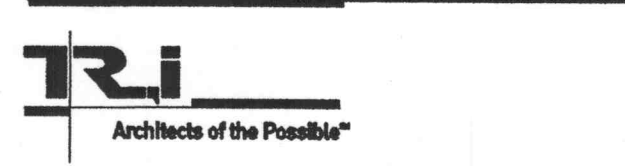
OUTLOTS 4B, 4C, 4D  
4E AND 4F SHALL BE REQUIRED  
TO PROVIDE DETENTION AS EACH  
LOT IS DEVELOPED



- GENERAL CONTRACTOR  
 ARCHITECT  
 STRUCTURAL ENGINEER  
 GEOTECHNICAL ENGINEER  
 CIVIL ENGINEER  
 MECHANICAL ENGINEER  
 PLUMBING ENGINEER  
 ELECTRICAL ENGINEER  
 FIRE PROTECTION
- ARCO CONSTRUCTION CO., INC.  
 THOMAS ROOF INC. ARCHITECTS  
 IBRAHIM ENGINEERING CORP.  
 GEOTECHNOLOGY  
 J.R. GRIMES CONSULTING ENGINEERS  
 JARRRELL MECHANICAL CONTRACTORS  
 SYSTEM ARE, INC.  
 PAYNE CREST ELECTRIC  
 BI-STATE FIRE PROTECTION



**LABOURE CENTRE**  
 4601 HIGHWAY K  
 O'FALLON, MISSOURI



THOMAS ROOF INC. ARCHITECTS  
 6351 Maryland Ave. Suite 200  
 St. Louis, Missouri 63105  
 314-724-9990  
 fax-726-9991  
 www.triroof.com  
 Copyright 2004

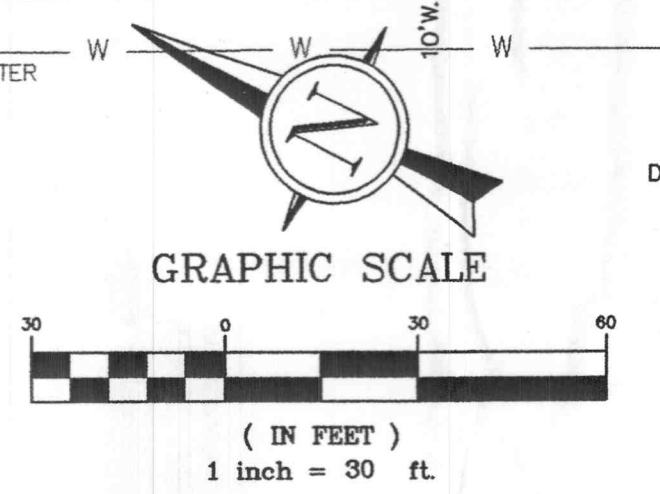
DATE: 02/13/04  
 REVISIONS:

PER CITY, DUCKETT CREEK  
 & MODOT COMMENTS 04/06/04  
 PER FIELD CHANGES 11/05/04

DWG. BY: J.L.W.  
 PROJECT NO.: 10048  
 SHEET NO.:

**C3.1**  
 SITE PLAN

PREPARED FOR:  
 WILLIAM H. ERKER  
 35 N. CENTRAL, STE 400  
 ST. LOUIS, MO 63105  
 PH: (314) 863-6061  
 FAX: (314) 863-6146



R&Z FILE # 0704/0704.01