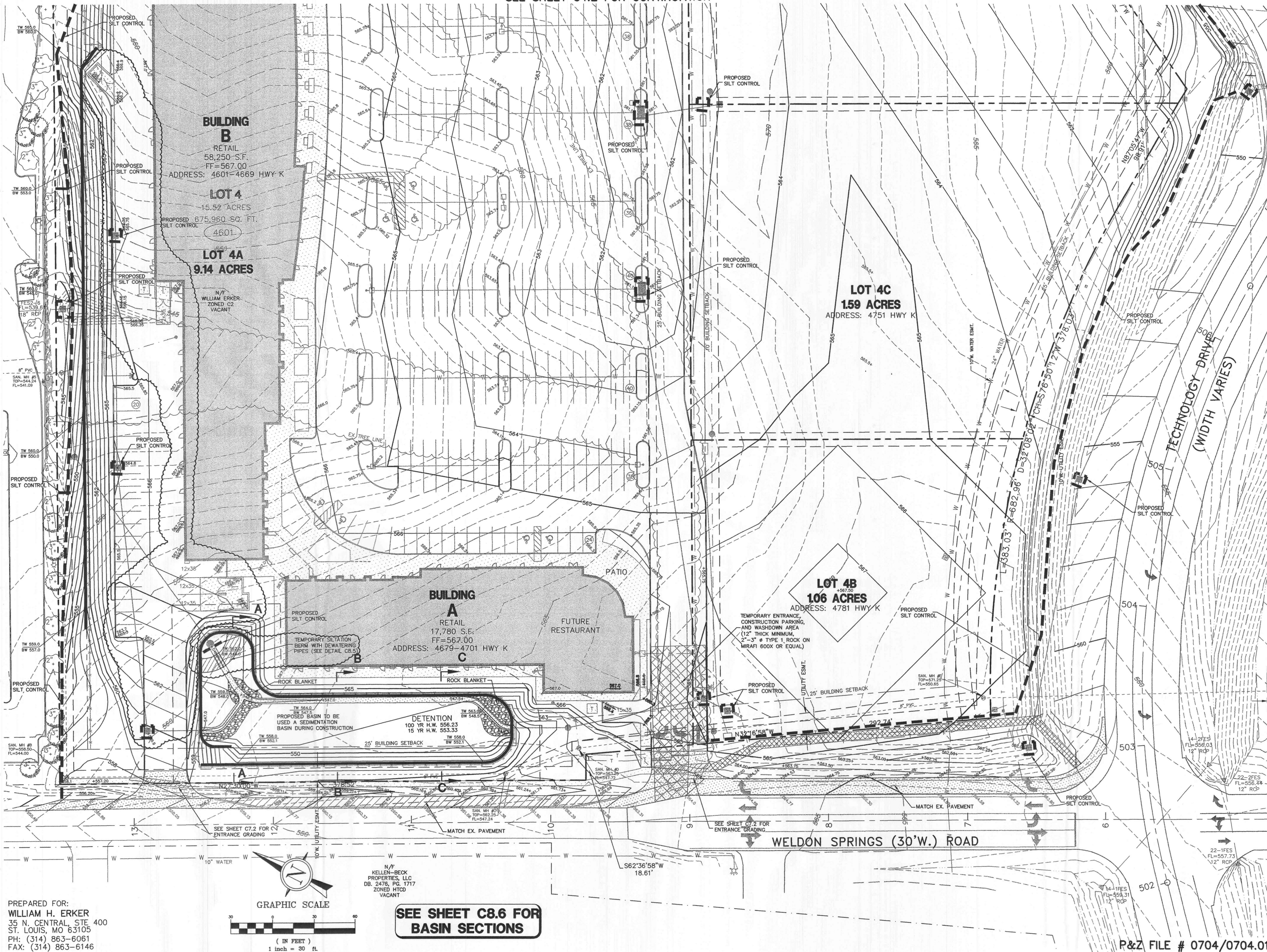
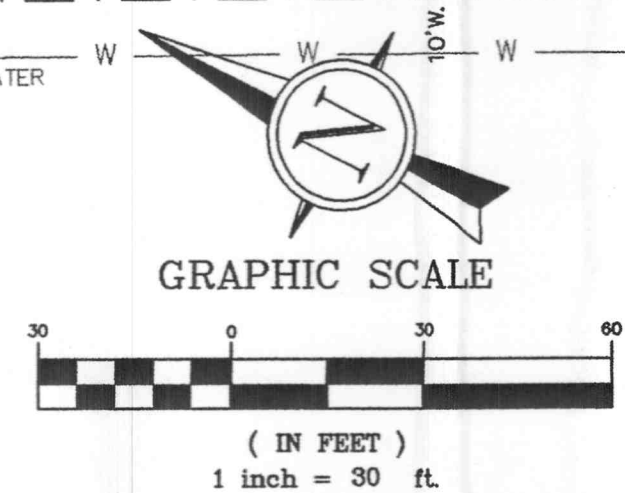


SEE SHEET C4.2 FOR CONTINUATION

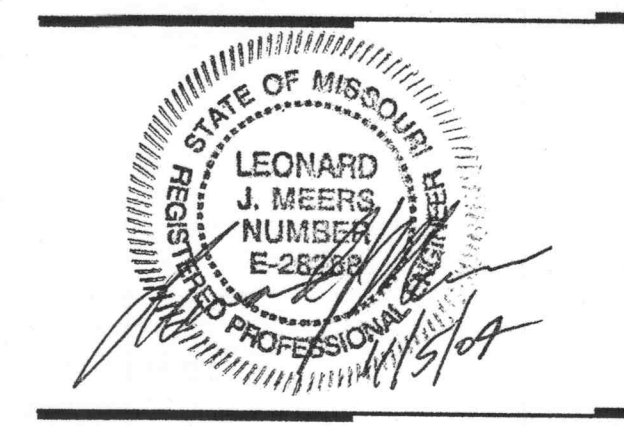


PREPARED FOR:  
 WILLIAM H. ERKER  
 35 N. CENTRAL, STE 400  
 ST. LOUIS, MO 63105  
 PH: (314) 863-6061  
 FAX: (314) 863-6146



**SEE SHEET C8.6 FOR  
 BASIN SECTIONS**

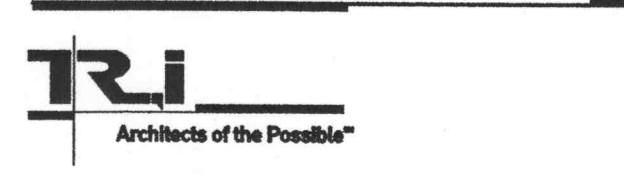
N/F  
 KELLEN-BECK  
 PROPERTIES, LLC  
 DB. 2476, PG. 1717  
 ZONED HTCD  
 VACANT



- GENERAL CONTRACTOR  
 ARCHITECT  
 STRUCTURAL ENGINEER  
 GEOTECHNICAL ENGINEER  
 CIVIL ENGINEER  
 MECHANICAL ENGINEER  
 PLUMBING ENGINEER  
 ELECTRICAL ENGINEER  
 FIRE PROTECTION
- ARCHITECTS  
 GEOTECHNOLOGY  
 CONSULTING ENGINEERS  
 MECHANICAL CONTRACTORS  
 SYSTEMS, INC.  
 ELECTRICAL  
 FIRE PROTECTION

**ARCO**  
 Construction Company, Inc.

**LABOURÉ CENTRE**  
 4601 HIGHWAY K  
 O'FALLON, MISSOURI



THOMAS ROOF INC. - ARCHITECTS  
 8251 Merrieland Ave. Suite 200 314-726-9990  
 St. Louis, Missouri 63105 Fax: 726-9991  
 www.trarchitects.com

DATE: 02/13/04

REVISIONS	DATE
PER CITY, DUCKETT CREEK & MODOT COMMENTS	04/06/04
PER CITY COMMENTS	04/28/04
REVISED GRADING	08/18/04

DWG. BY: J.L.W.  
 PROJECT NO.: 1004B  
 SHEET NO.:

**C4.1**  
 GRADING PLAN

R&Z FILE # 0704/0704.01