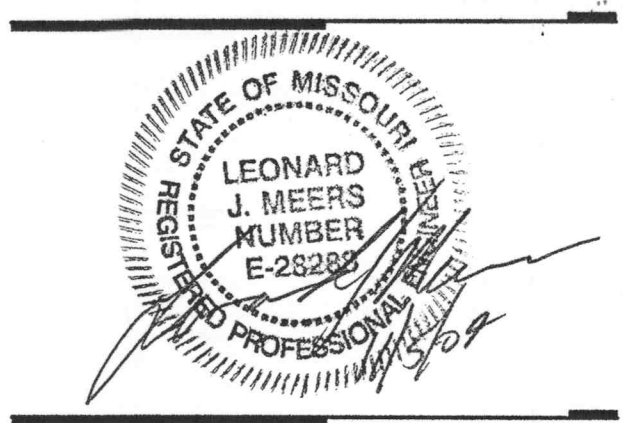
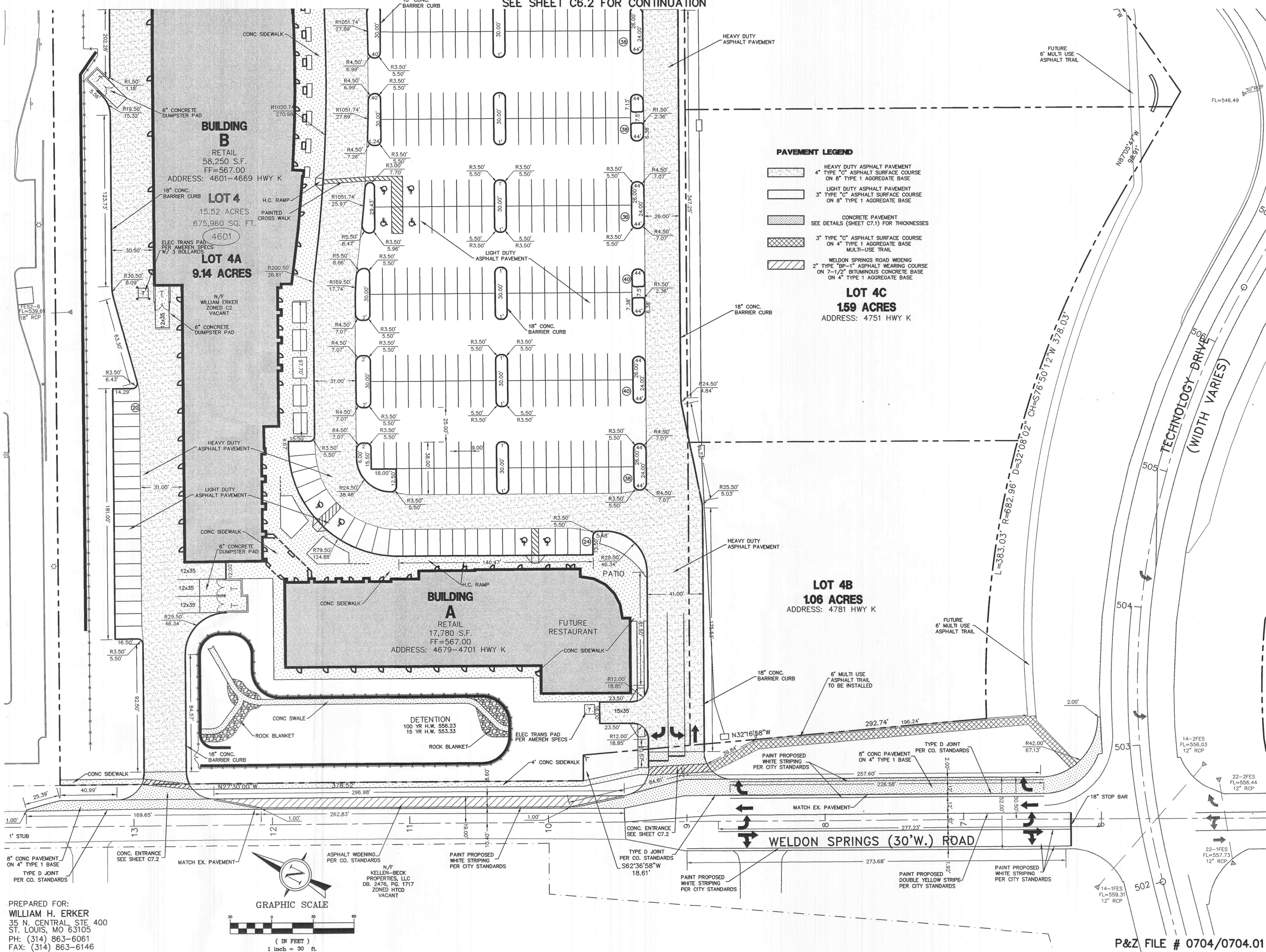


SEE SHEET C6.2 FOR CONTINUATION

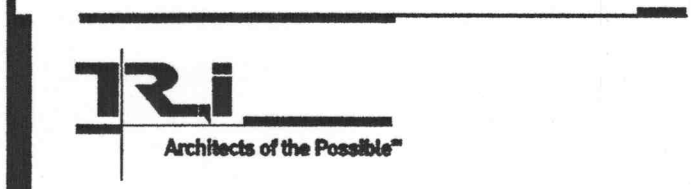


GENERAL CONTRACTOR
ARCHITECT
STRUCTURAL ENGINEER
GEOTECHNICAL ENGINEER
CIVIL ENGINEER
MECHANICAL ENGINEER
PLUMBING ENGINEER
ELECTRICAL ENGINEER
FIRE PROTECTION

ARCO CONSTRUCTION CO., INC.
THOMAS ROOF INC. ARCHITECTS
IBRAHIM ENGINEERING CORP.
GEOTECHNOLOGY
J.R. GRIMES CONSULTING ENGINEERS
JARRELL MECHANICAL CONTRACTORS
SYSTEM AIRE, INC.
PAYNE CREST ELECTRIC
BI-STATE FIRE PROTECTION



LABOURÉ CENTRE
4601 HIGHWAY K
O'FALLON, MISSOURI



THOMAS ROOF INC. ARCHITECTS
2251 Maryland Ave. Suite 300
St. Louis, Missouri 63105
314-726-9990
fax-726-9991
www.triarchitects.com

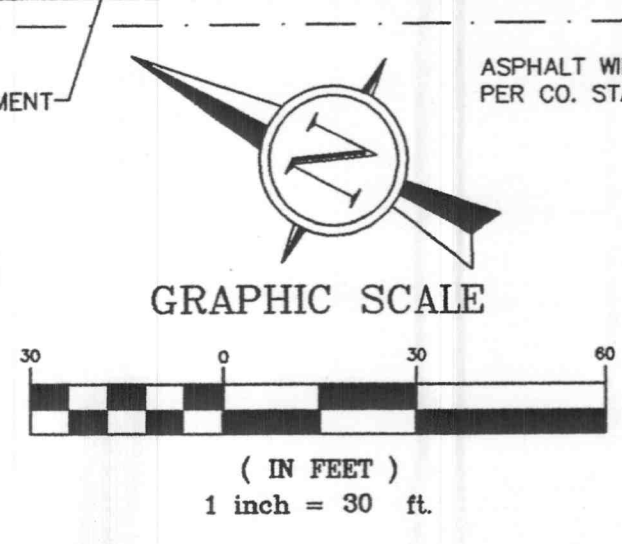
DATE: 02/13/04

REVISIONS
PER CITY, DUCKETT CREEK & MODOT COMMENTS 04/06/04

DWG. BY: J.W.
PROJECT NO.: 1004B
SHEET NO.:

C6.1
GEOMETRICS PLAN

PREPARED FOR:
WILLIAM H. ERKER
35 N. CENTRAL, STE 400
ST. LOUIS, MO 63105
PH: (314) 863-6061
FAX: (314) 863-6146



P&Z FILE # 0704/0704.01