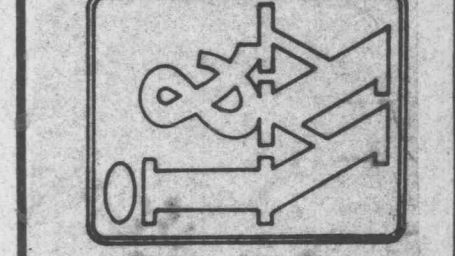
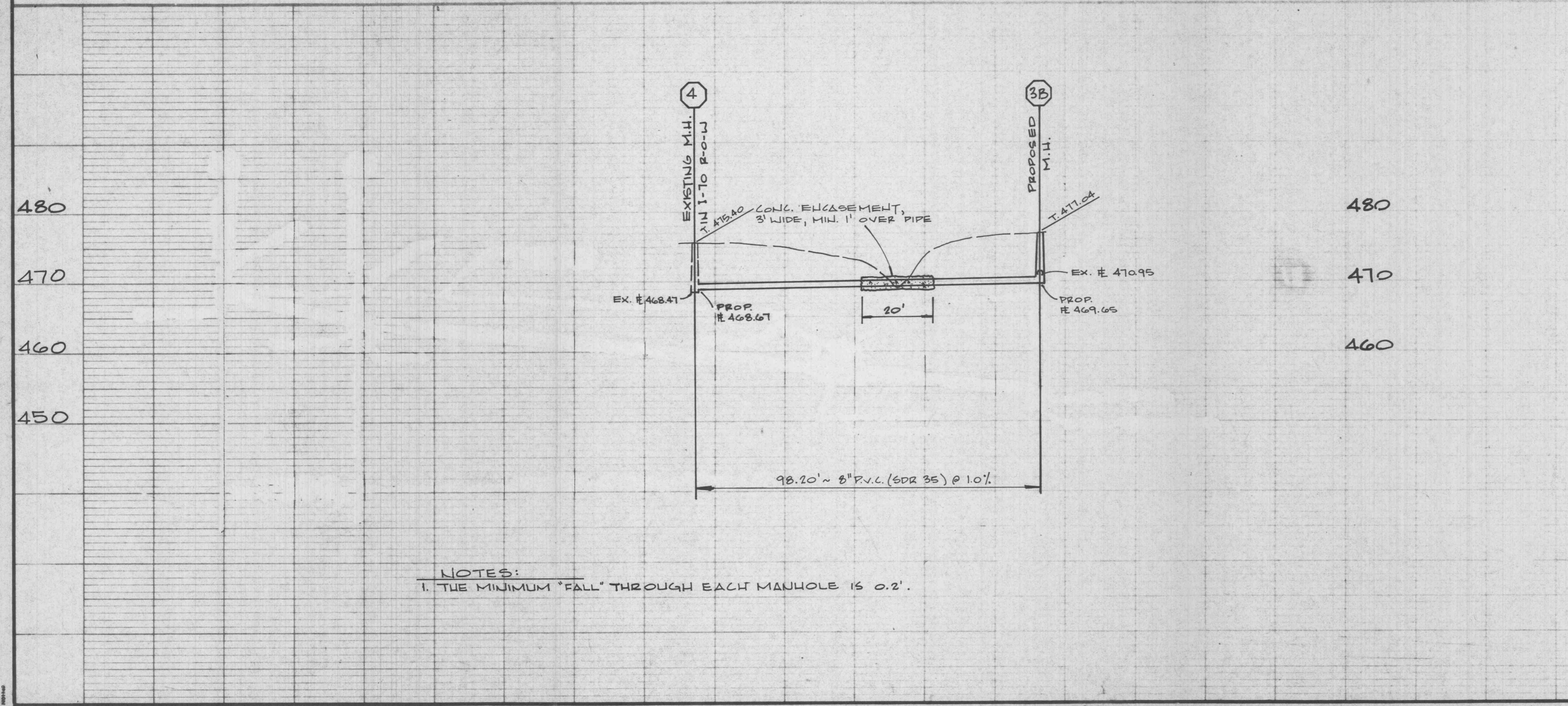


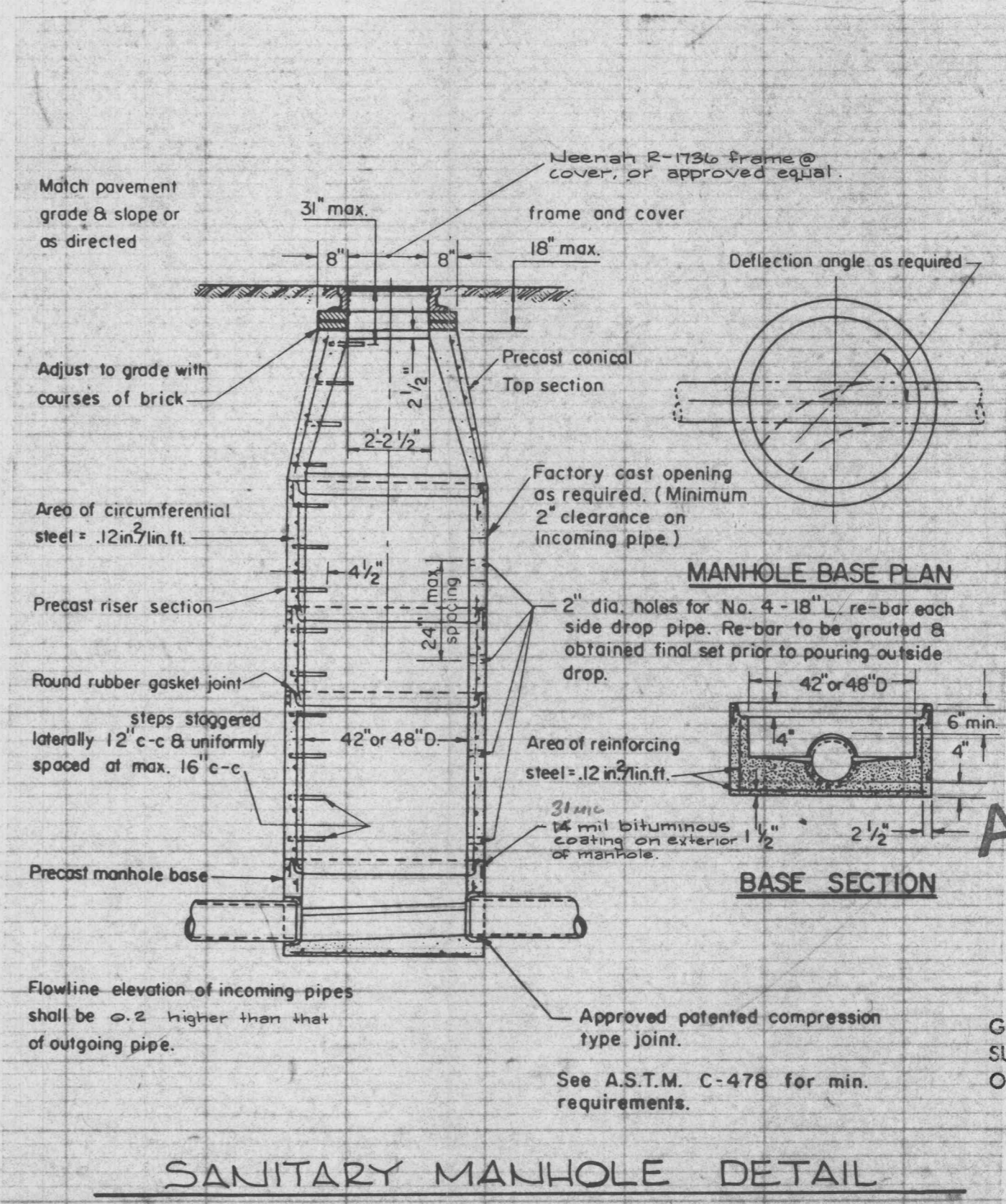
INGRAM-WEHMEYER, INC.
 6 WESTBURY DRIVE
 SAINT CHARLES, MISSOURI 63301
 314-724-4758



REVISIONS	



NOTES:
 1. THE MINIMUM "FALL" THROUGH EACH MANHOLE IS 0.2'.



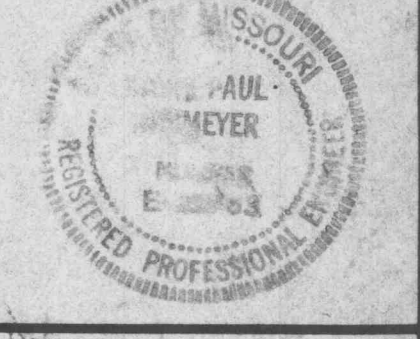
APPROVED

RECEIVED JUN 13 1988

GEORGE BUTLER ASSOCIATES, INC.
 SUITE 200 - 225 SOUTH MAIN ST.
 O'FALLON, MISSOURI 63366

SANITARY LINE TO
 LACLEDE MOBILE HOME PARK
 ST. CHARLES COUNTY, MO.
 ALTERNATE ALIGNMENT

DESIGNED
 D.P.W.
 DRAWN
 D.E.S.
 CHECKED
 D.P.W.
 DATE
 3/88
 SEAL



SCALE
 1" = 20'
 1/10" = 1/8"
 JOB SHEET OF
 4361 / /