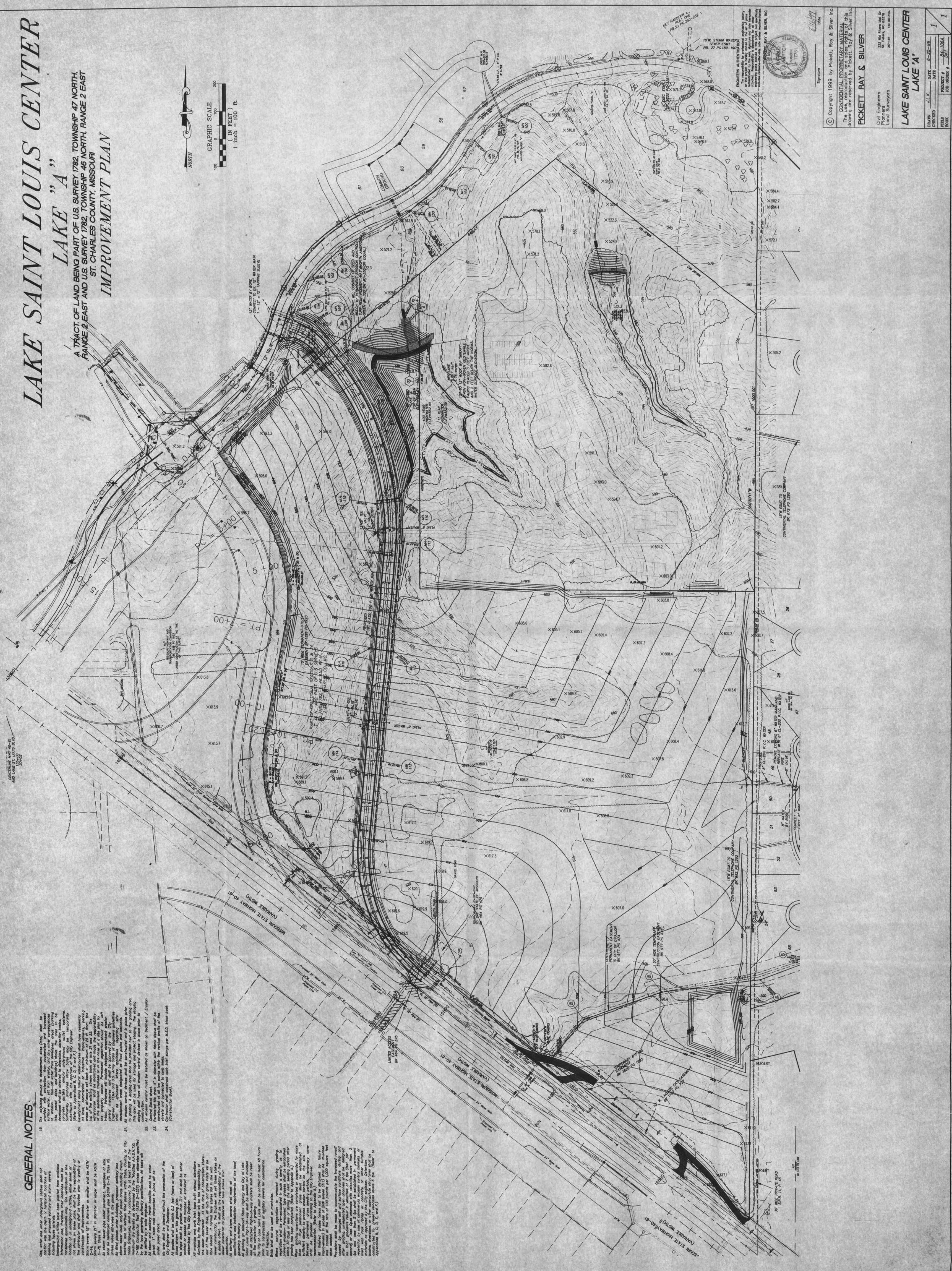


# LAKE SAINT LOUIS CENTER LAKE "A"

A TRACT OF LAND BEING PART OF U.S. SURVEY 1782, TOWNSHIP 47 NORTH,  
RANGE 2 EAST AND U.S. SURVEY 1782, TOWNSHIP 46 NORTH, RANGE 2 EAST  
ST. CHARLES COUNTY, MISSOURI

## IMPROVEMENT PLAN



**GENERAL NOTES:**

1. The existing ground to be improved shall be as shown on this plan. All new structures, including but not limited to, buildings, bridges, and other improvements, shall be constructed in accordance with the specifications and standards of the Missouri Department of Transportation and the City of St. Louis.
2. All structures shall be constructed on a firm foundation and shall be designed to withstand the maximum loads and stresses to which they may be subjected.
3. All structures shall be constructed in accordance with the specifications and standards of the Missouri Department of Transportation and the City of St. Louis.
4. All structures shall be constructed in accordance with the specifications and standards of the Missouri Department of Transportation and the City of St. Louis.
5. All structures shall be constructed in accordance with the specifications and standards of the Missouri Department of Transportation and the City of St. Louis.
6. All structures shall be constructed in accordance with the specifications and standards of the Missouri Department of Transportation and the City of St. Louis.
7. All structures shall be constructed in accordance with the specifications and standards of the Missouri Department of Transportation and the City of St. Louis.
8. All structures shall be constructed in accordance with the specifications and standards of the Missouri Department of Transportation and the City of St. Louis.
9. All structures shall be constructed in accordance with the specifications and standards of the Missouri Department of Transportation and the City of St. Louis.
10. All structures shall be constructed in accordance with the specifications and standards of the Missouri Department of Transportation and the City of St. Louis.
11. All structures shall be constructed in accordance with the specifications and standards of the Missouri Department of Transportation and the City of St. Louis.
12. All structures shall be constructed in accordance with the specifications and standards of the Missouri Department of Transportation and the City of St. Louis.
13. All structures shall be constructed in accordance with the specifications and standards of the Missouri Department of Transportation and the City of St. Louis.
14. All structures shall be constructed in accordance with the specifications and standards of the Missouri Department of Transportation and the City of St. Louis.
15. All structures shall be constructed in accordance with the specifications and standards of the Missouri Department of Transportation and the City of St. Louis.
16. All structures shall be constructed in accordance with the specifications and standards of the Missouri Department of Transportation and the City of St. Louis.
17. All structures shall be constructed in accordance with the specifications and standards of the Missouri Department of Transportation and the City of St. Louis.
18. All structures shall be constructed in accordance with the specifications and standards of the Missouri Department of Transportation and the City of St. Louis.
19. All structures shall be constructed in accordance with the specifications and standards of the Missouri Department of Transportation and the City of St. Louis.
20. All structures shall be constructed in accordance with the specifications and standards of the Missouri Department of Transportation and the City of St. Louis.
21. All structures shall be constructed in accordance with the specifications and standards of the Missouri Department of Transportation and the City of St. Louis.
22. All structures shall be constructed in accordance with the specifications and standards of the Missouri Department of Transportation and the City of St. Louis.
23. All structures shall be constructed in accordance with the specifications and standards of the Missouri Department of Transportation and the City of St. Louis.
24. All structures shall be constructed in accordance with the specifications and standards of the Missouri Department of Transportation and the City of St. Louis.

Copyright 1999 by Pickett, Roy & Silver, Inc.  
 CONFIDENTIAL ENGINEERING MATERIAL  
 This drawing is the property of Pickett, Roy & Silver, Inc.  
 and is not to be used for any other purpose without the  
 written consent of Pickett, Roy & Silver, Inc.

**PICKETT, ROY & SILVER**  
 Civil Engineers  
 333 Midway Mall  
 St. Louis, MO 63103

**LAKE SAINT LOUIS CENTER  
LAKE "A"**

DATE: 6-25-99  
 PROJECT: 64-1004  
 SHEET: 1 OF 1