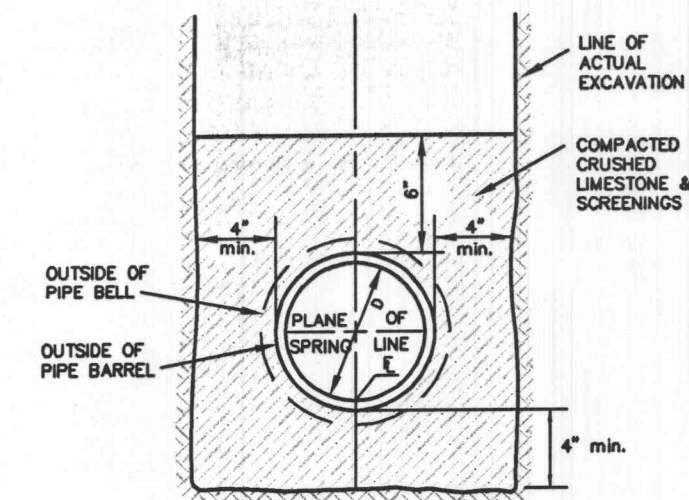
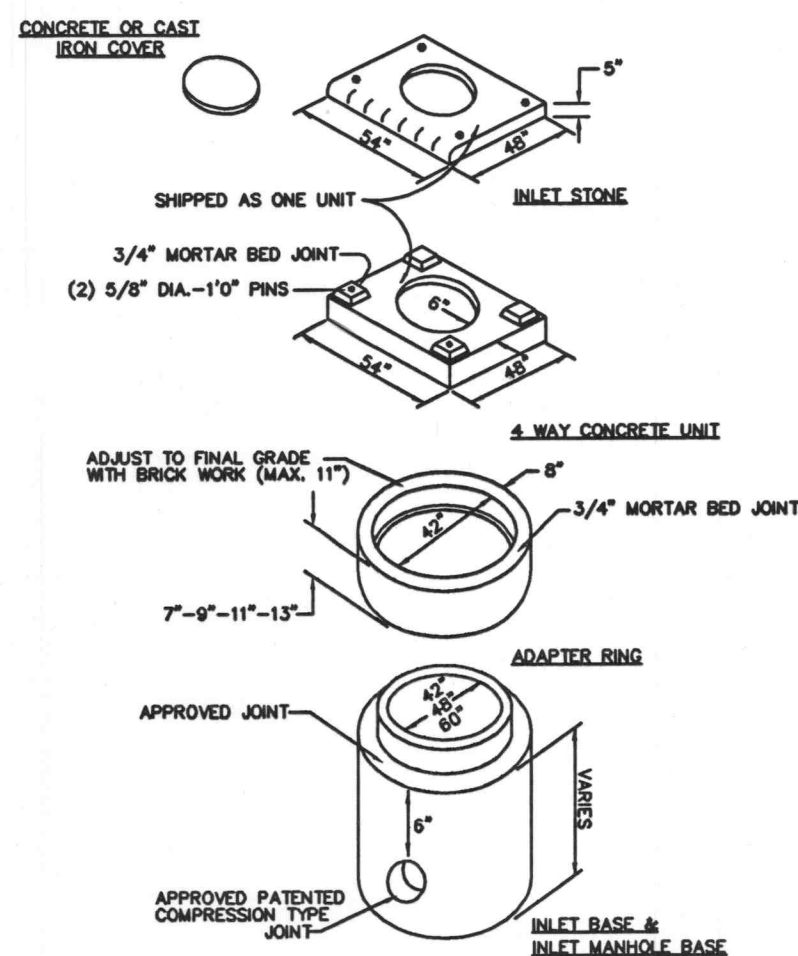
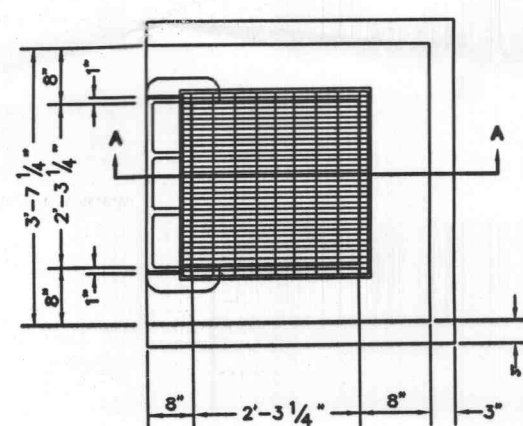


**PIPE BEDDING CLASS "C"**  
(MODIFIED FOR REINFORCED CONCRETE PIPE)

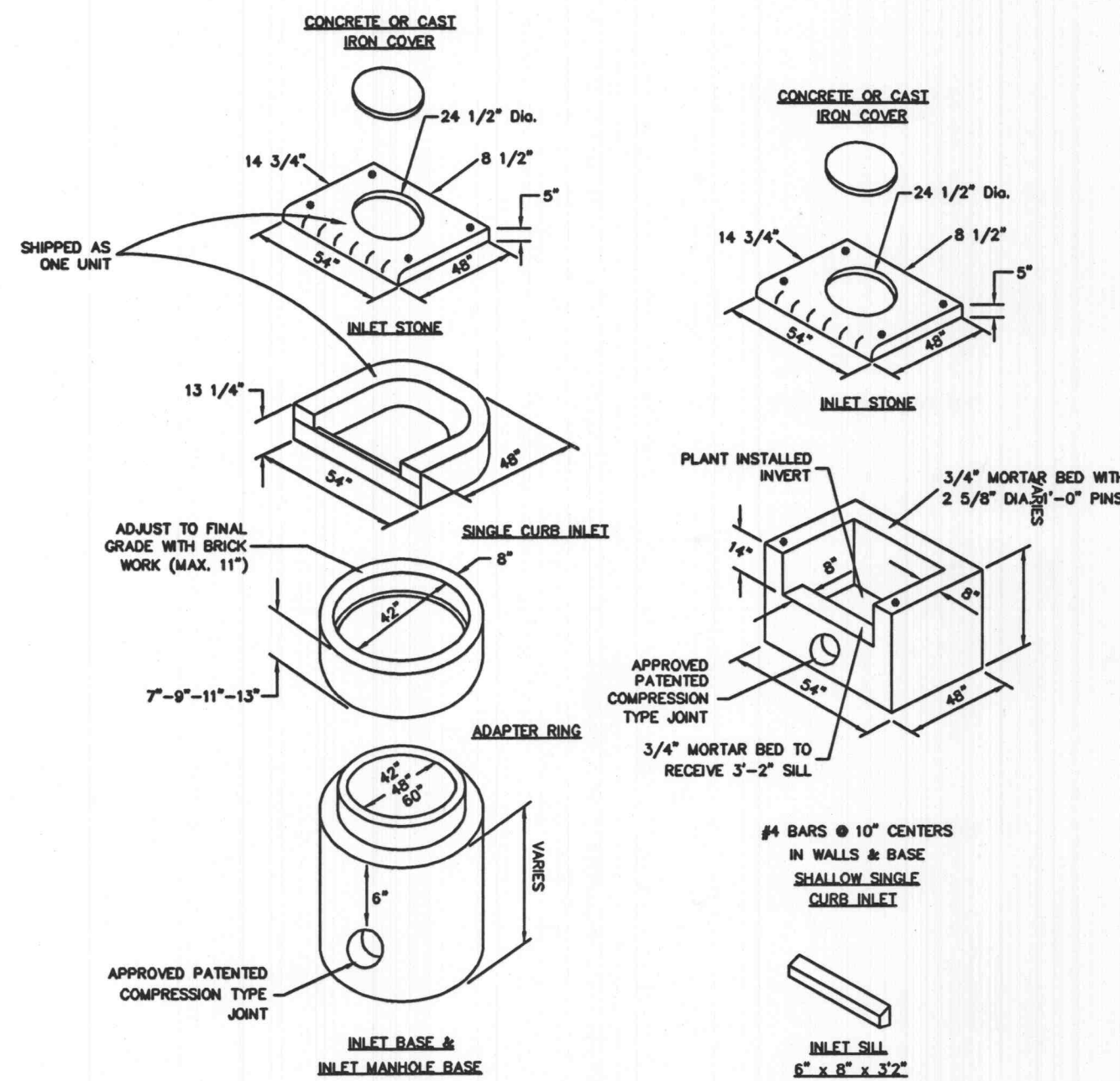


**PIPE BEDDING CLASS "C"**  
(FOR ALL PIPE EXCEPT REINFORCED CONCRETE PIPE)  
**PIPE BEDDING DETAILS**  
(n.t.s.)



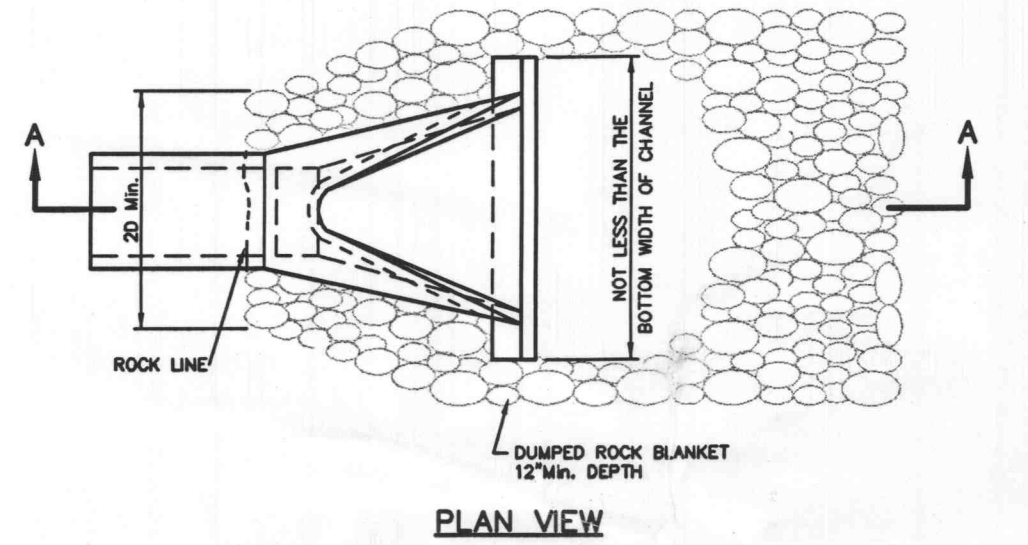
**PRECAST AREA INLET DETAIL**  
(n.t.s.)

NOTE: EACH INLET TO HAVE 5/8\"/>

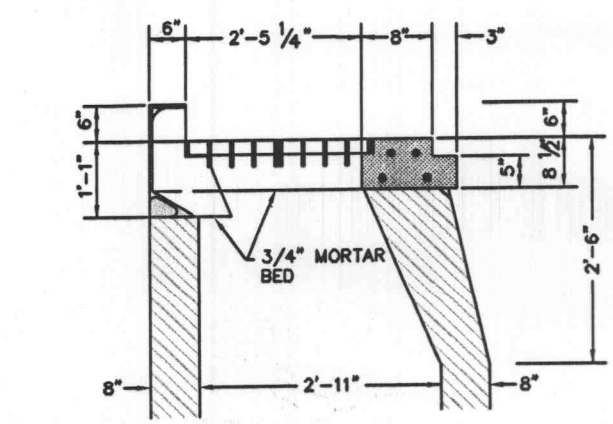


**CURB INLET DETAILS**  
(n.t.s.)

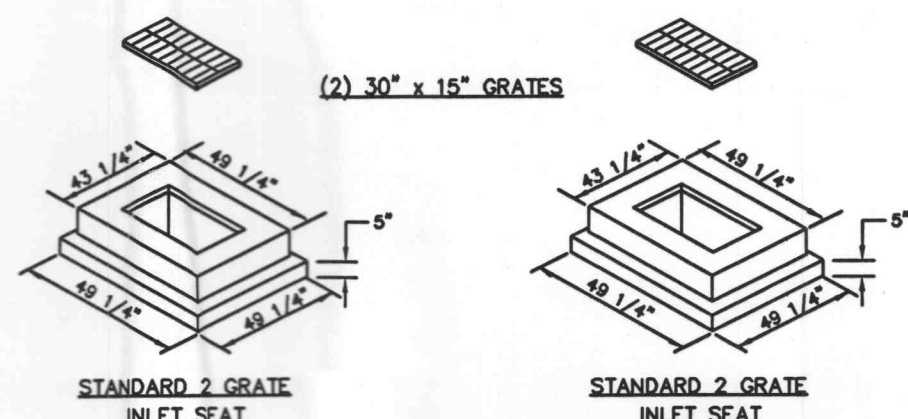
NOTE: EACH INLET TO HAVE 5/8\"/>



**RIP-RAP DETAIL FOR PIPE PLACEMENT INTO LAKE**  
(n.t.s.)

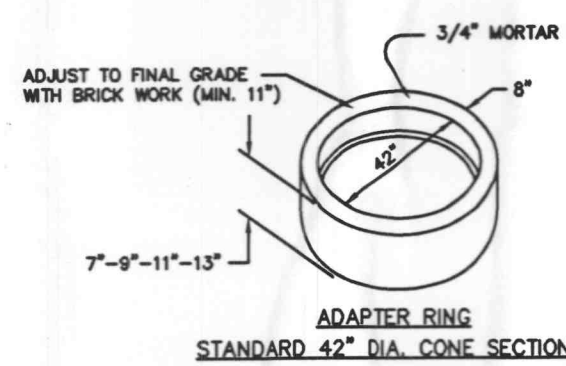


**2 GRATE INLET w/SIDE INTAKE**  
(n.t.s.)

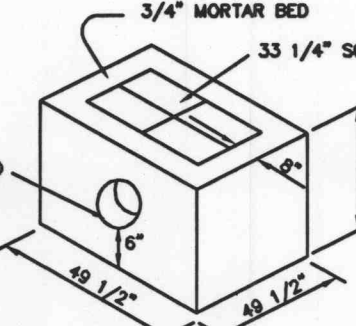


**STANDARD 2 GRATE INLET SEAT**

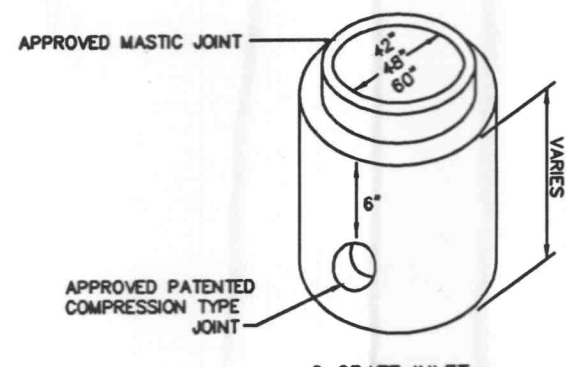
**STANDARD 2 GRATE INLET SEAT**



**STANDARD 42\"/>**



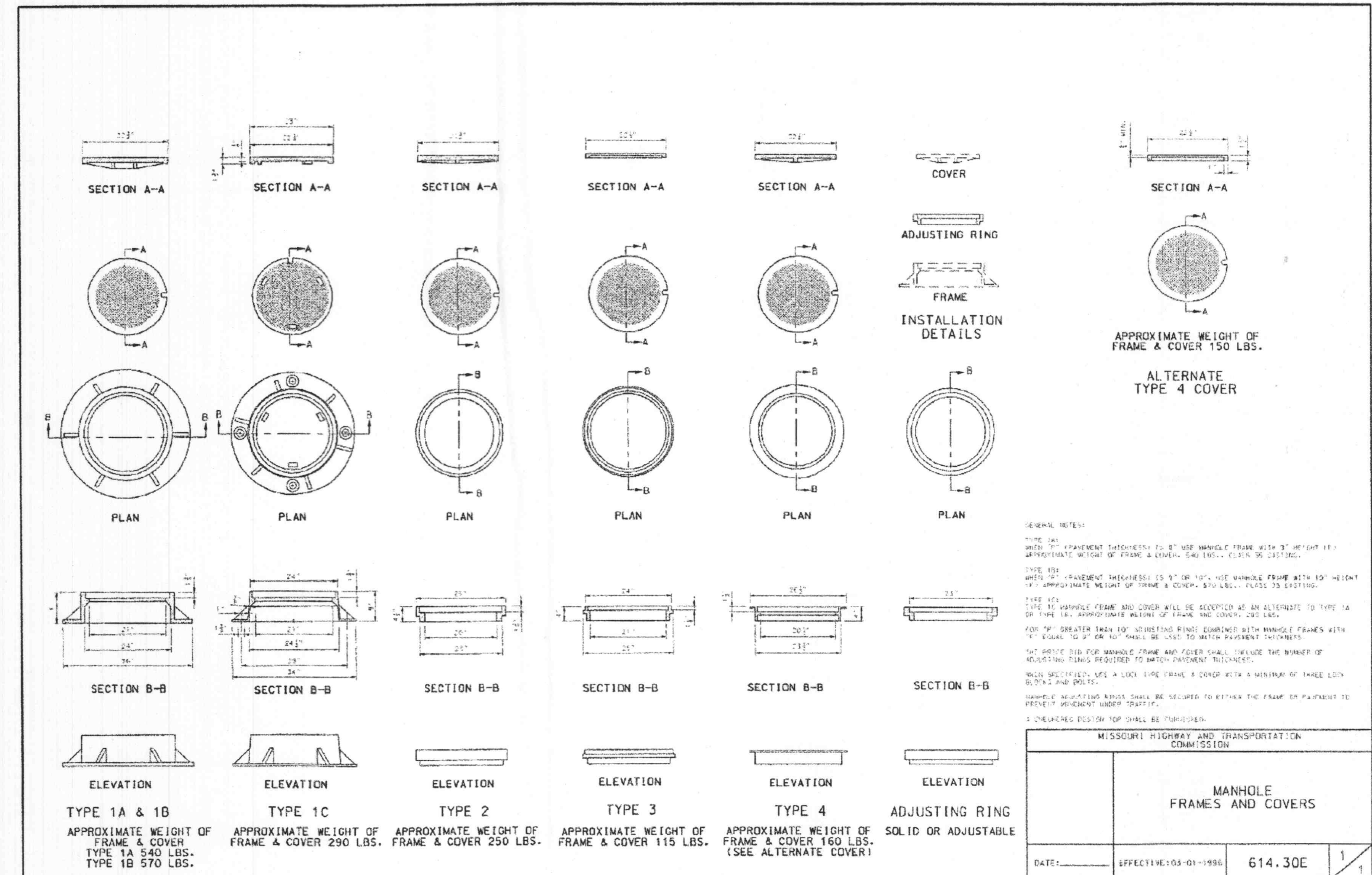
**SQUARE 2 GRATE INLET**



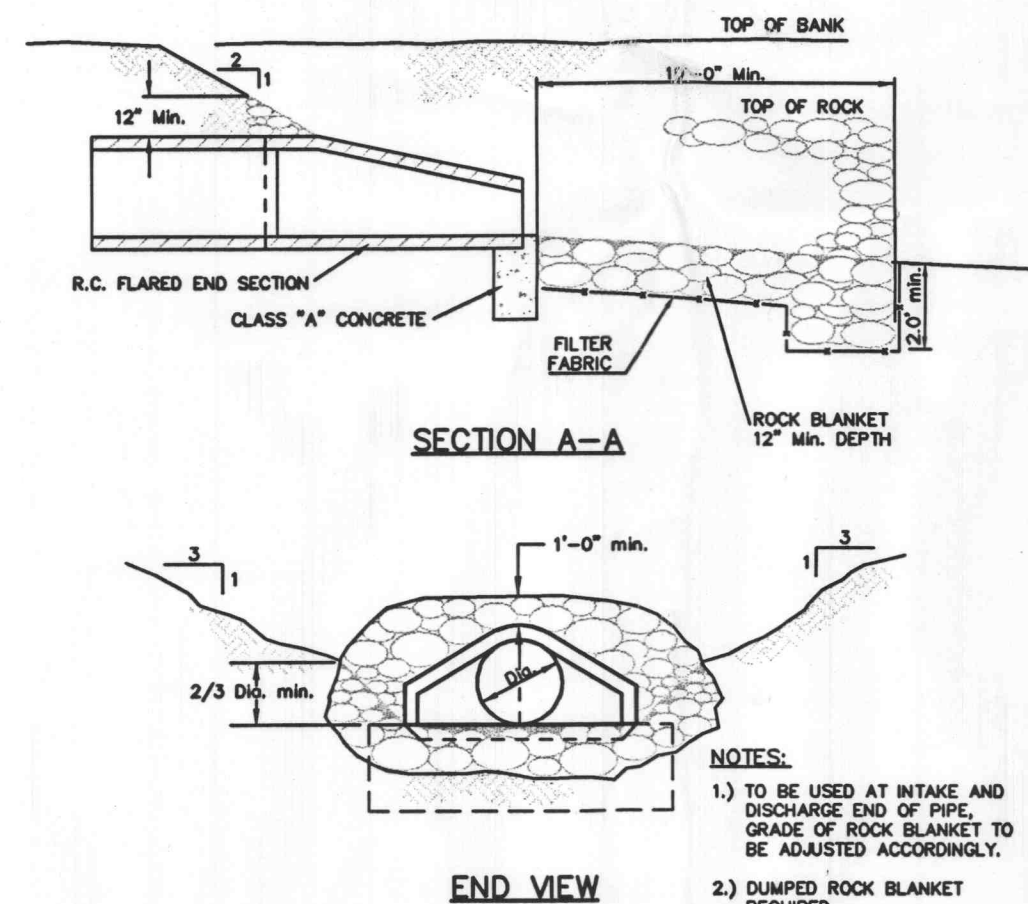
**2 GRATE INLET INLET MANHOLE BASE**

**2 GRATE INLET DETAIL**  
(n.t.s.)

NOTE: INLETS ON THIS SHEET ARE TO BE USED IN LOCATIONS WHERE STANDARD OPEN THROAT INLETS CAN NOT BE USED, IN PAVED TRAFFIC WAY AND IN LIMITED EASEMENTS.

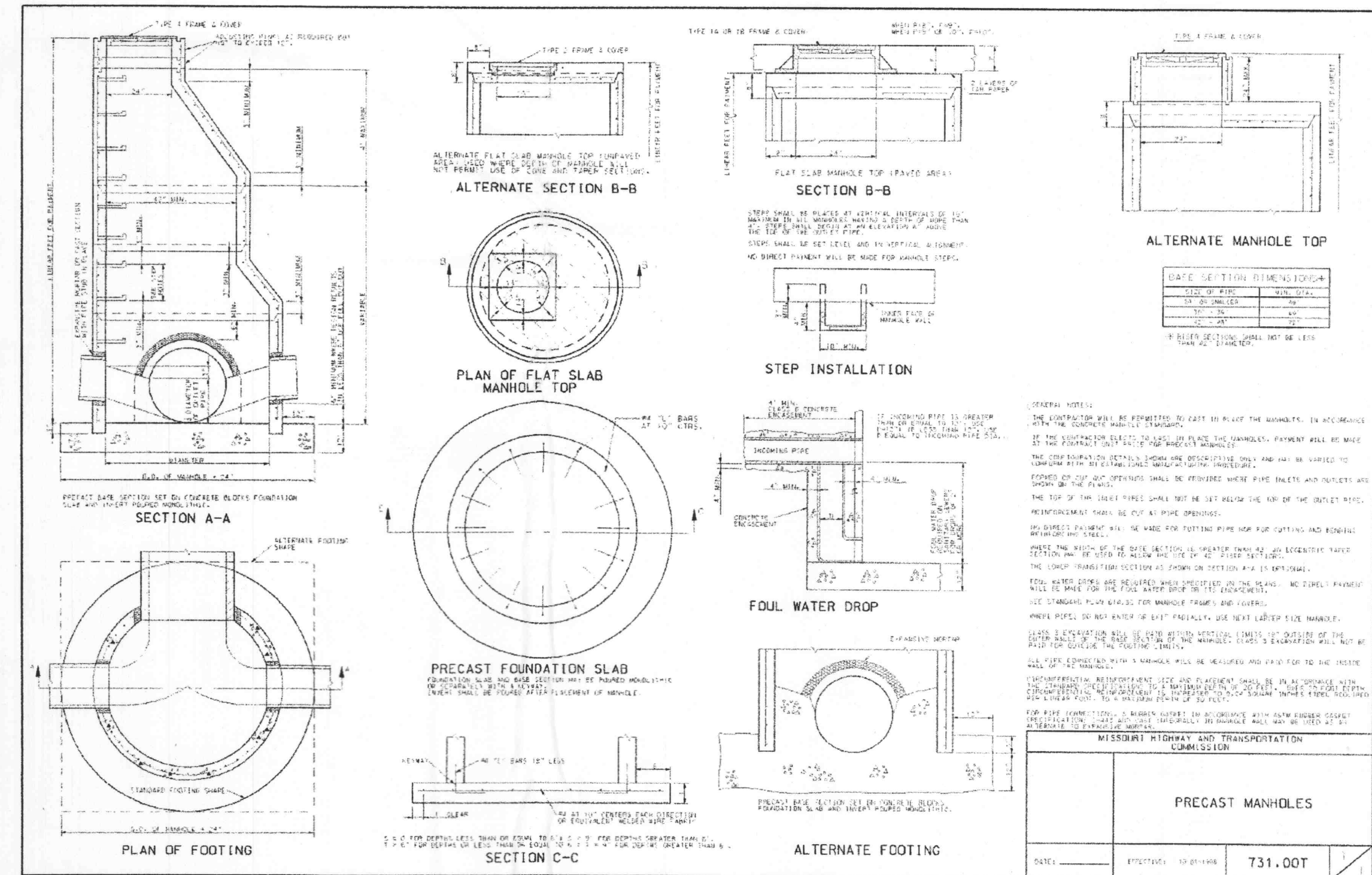


**MANHOLE FRAMES AND COVERS**  
DATE: EFFECTIVE 05-01-1996 614.30E 1/1

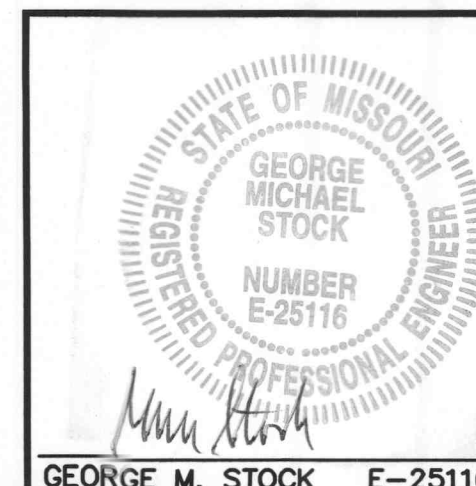


**FLARED END SECTION DETAIL**  
(n.t.s.)

NOTES:  
1) TO BE USED AT INTAKE AND DISCHARGE END OF PIPE. GRADE OF ROCK BLANKET TO BE ADJUSTED ACCORDINGLY.  
2) DUMPED ROCK BLANKET REQUIRED.



**PRECAST MANHOLES**  
DATE: EFFECTIVE 05-01-1996 731.00T 1/1



**LAKESIDE SHOPPES**  
**SEWER DETAILS**

**STOCK & ASSOCIATES**  
**CONSULTING ENGINEERS, INC.**

425 NORTH NEW BALLAS ROAD  
SUITE 165  
ST. LOUIS, MO. 63141  
PH. (314) 432-5100  
FAX (314) 432-8171  
e-mail: general@stockassoc.com

DRAWN BY: j.t.r.	DATE: 11/21/02	CHECKED BY: G.M.S.	DATE: 11/21/02
JOB NUMBER: 202-2777		SHEET: C14of 25	