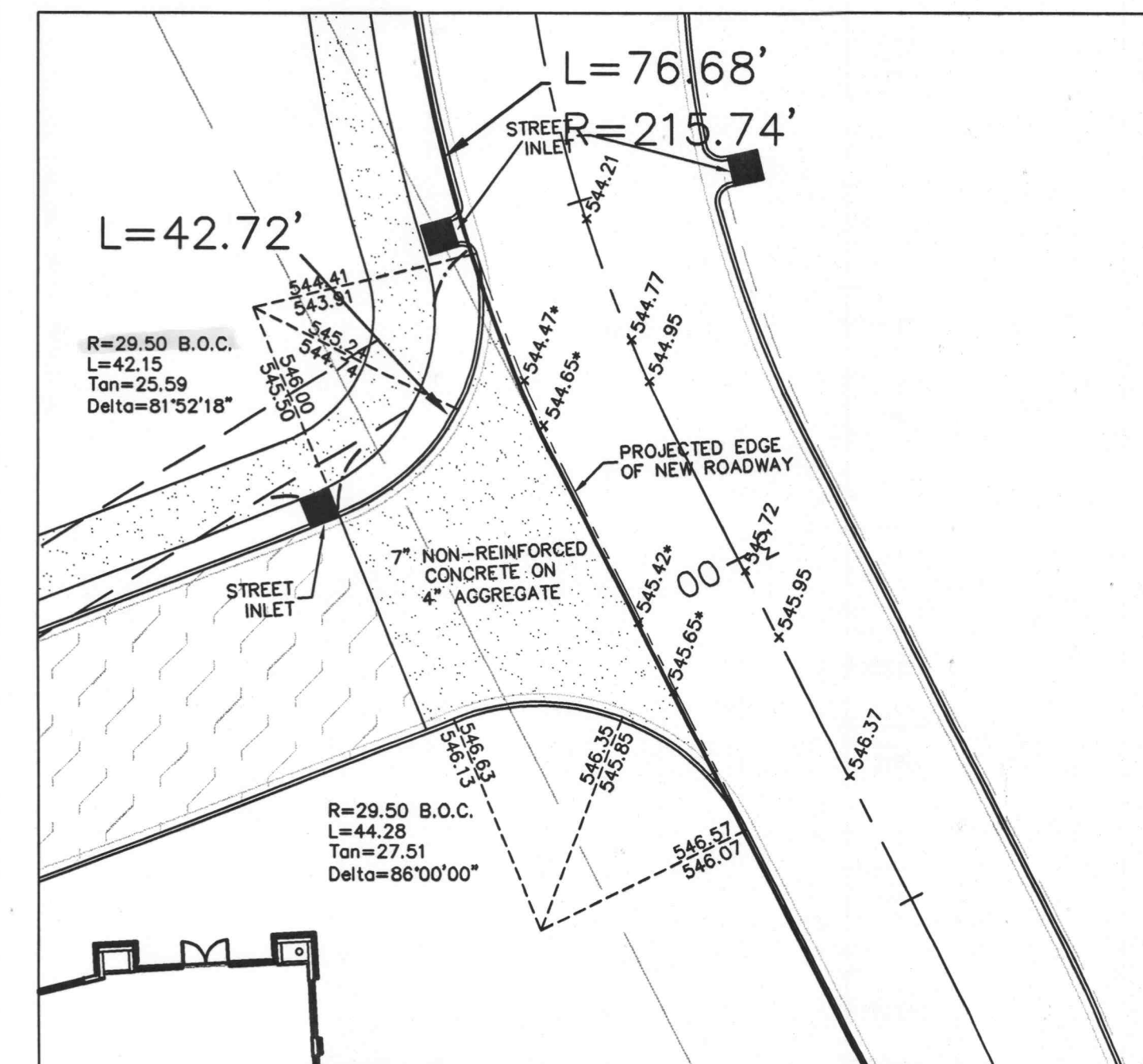


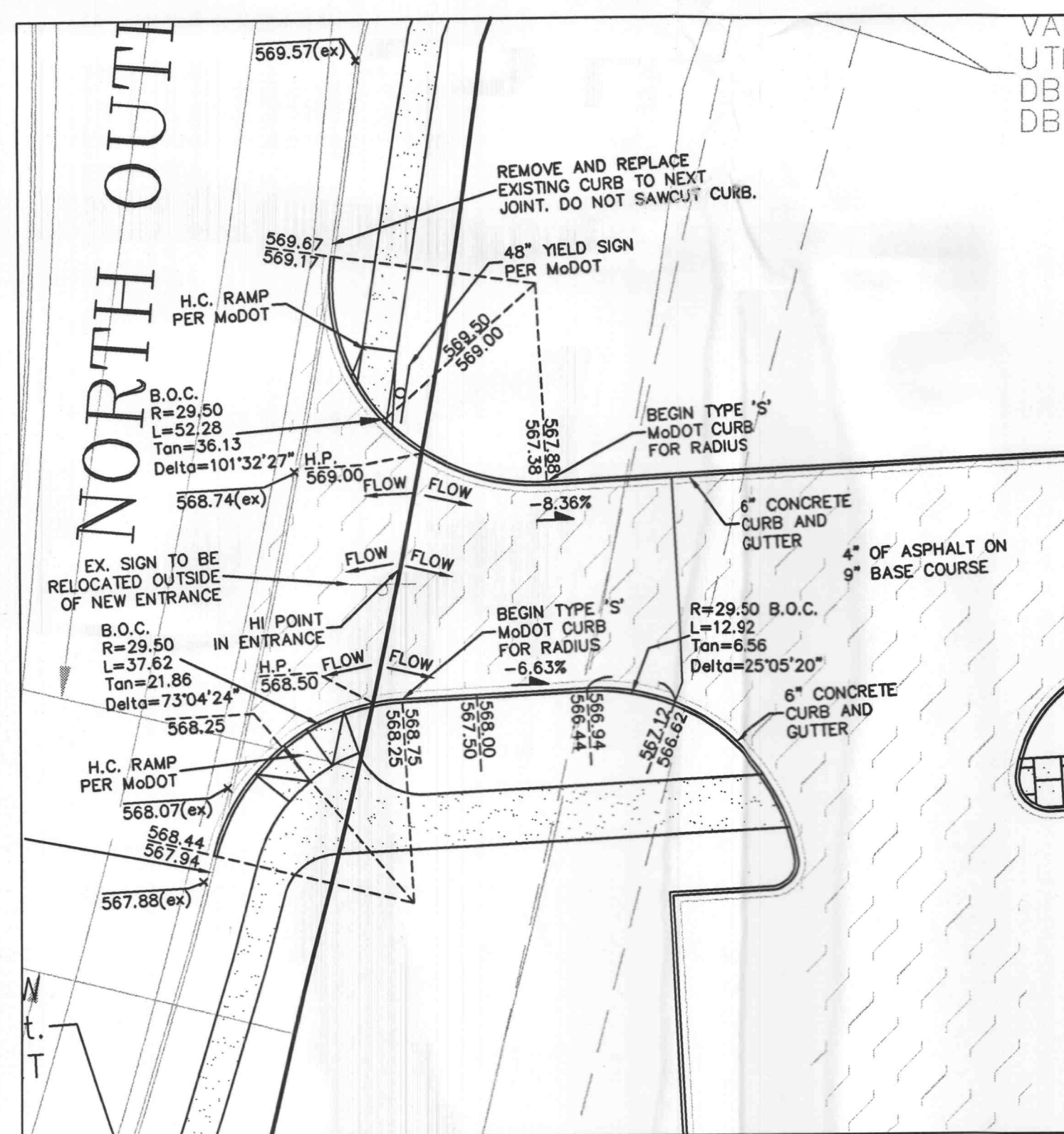
**WINGHAVEN LANE WIDENING AND NORTH ENTRANCE WARPING DETAIL**

SCALE: 1"=20'



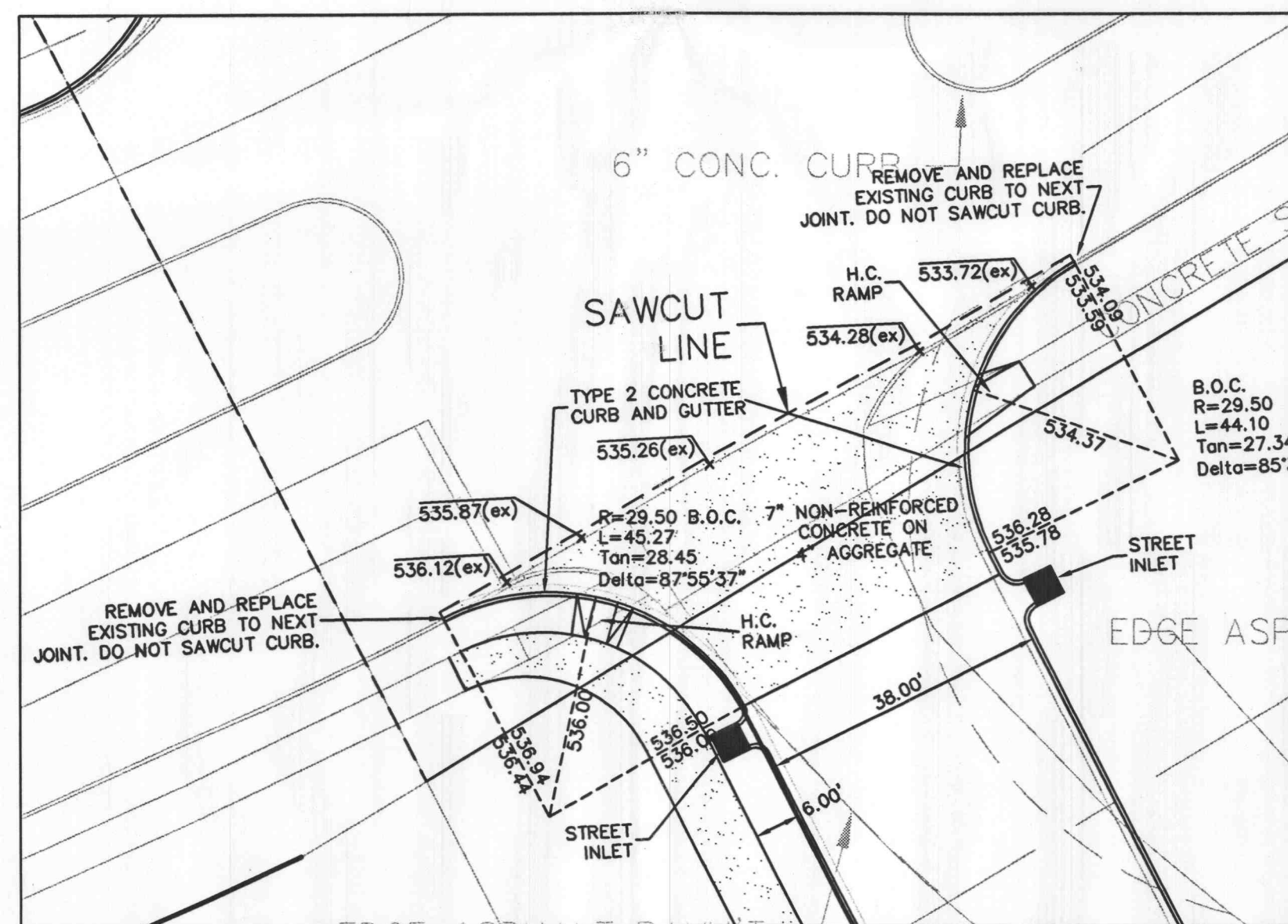
**EAST ENTRANCE WARPING DETAIL**

SCALE: 1"=20'



**WEST ENTRANCE WARPING DETAIL**

SCALE: 1"=20'



**WINGHAVEN BLVD. ENTRANCE WARPING DETAIL**

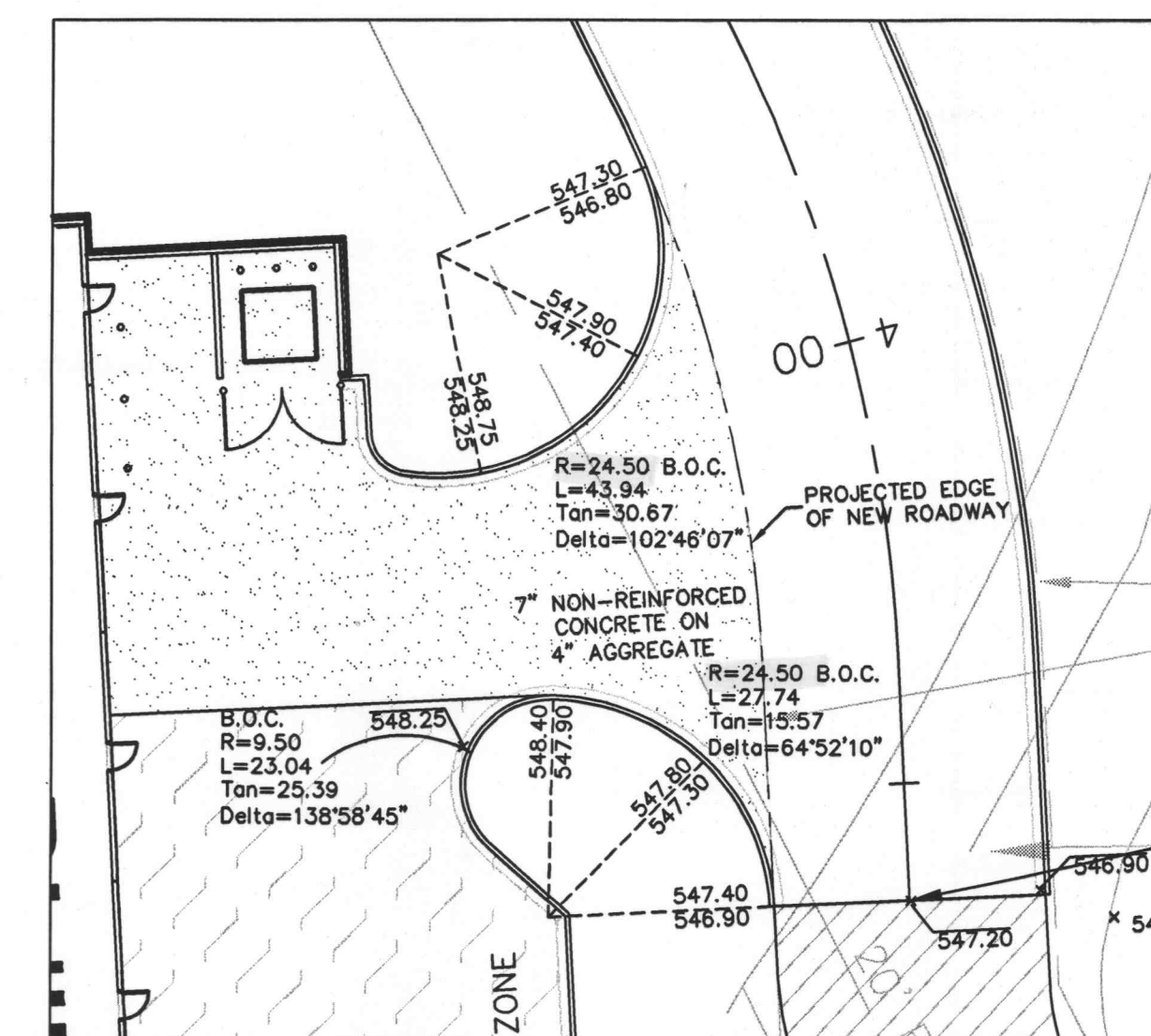
SCALE: 1"=20'

**SPOT ELEVATION LEGEND**

- 000.00\* - SPOT ELEVATION INTERPOLATED FROM EXISTING PAVEMENT SURVEY POINTS
- 000.00(ex) - EXISTING PAVEMENT SURVEY POINTS
- 000.00 - PROPOSED GRADE

**JOINT SPACING NOTE**

FOR CONCRETE ENTRANCE APRONS, CONTRACTOR TO REFER TO MoDOT SPECIFICATIONS.



**EAST REAR ENTRANCE WARPING DETAIL**

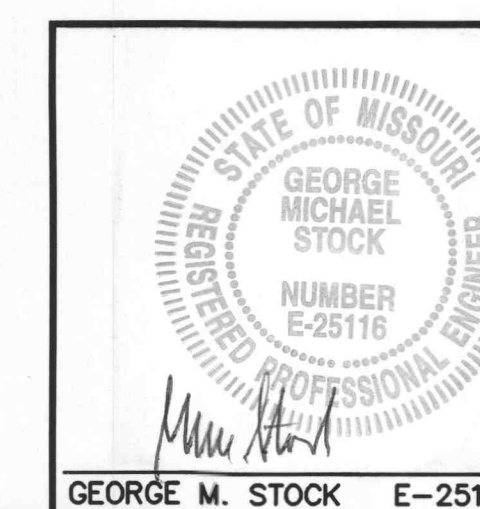
SCALE: 1"=20'

- ▲ 05/30/03 MoDOT COMMENTS
- ▲ 03/31/03 O'FALLON AND DCSD COMMENTS
- ▲ 03/19/03 O'FALLON COMMENTS
- ▲ 02/28/03 DCSD, MoDOT COMMENTS AND DESIGN COORDINATION

**LAKESIDE SHOPPES  
WARPING DETAILS**

**STOCK & ASSOCIATES  
CONSULTING ENGINEERS, INC.**

425 NORTH NEW BALLAS ROAD  
SUITE 165  
ST. LOUIS, MO. 63141  
PH. (314) 432-8100  
FAX (314) 432-8171  
e-mail: general@stockassoc.com



DRAWN BY: J.T.R.	DATE: 11/21/02	CHECKED BY: G.M.S.	DATE: 11/21/02	JOB NUMBER: 202-2777	SHEET: C19 of 25
------------------	----------------	--------------------	----------------	----------------------	------------------