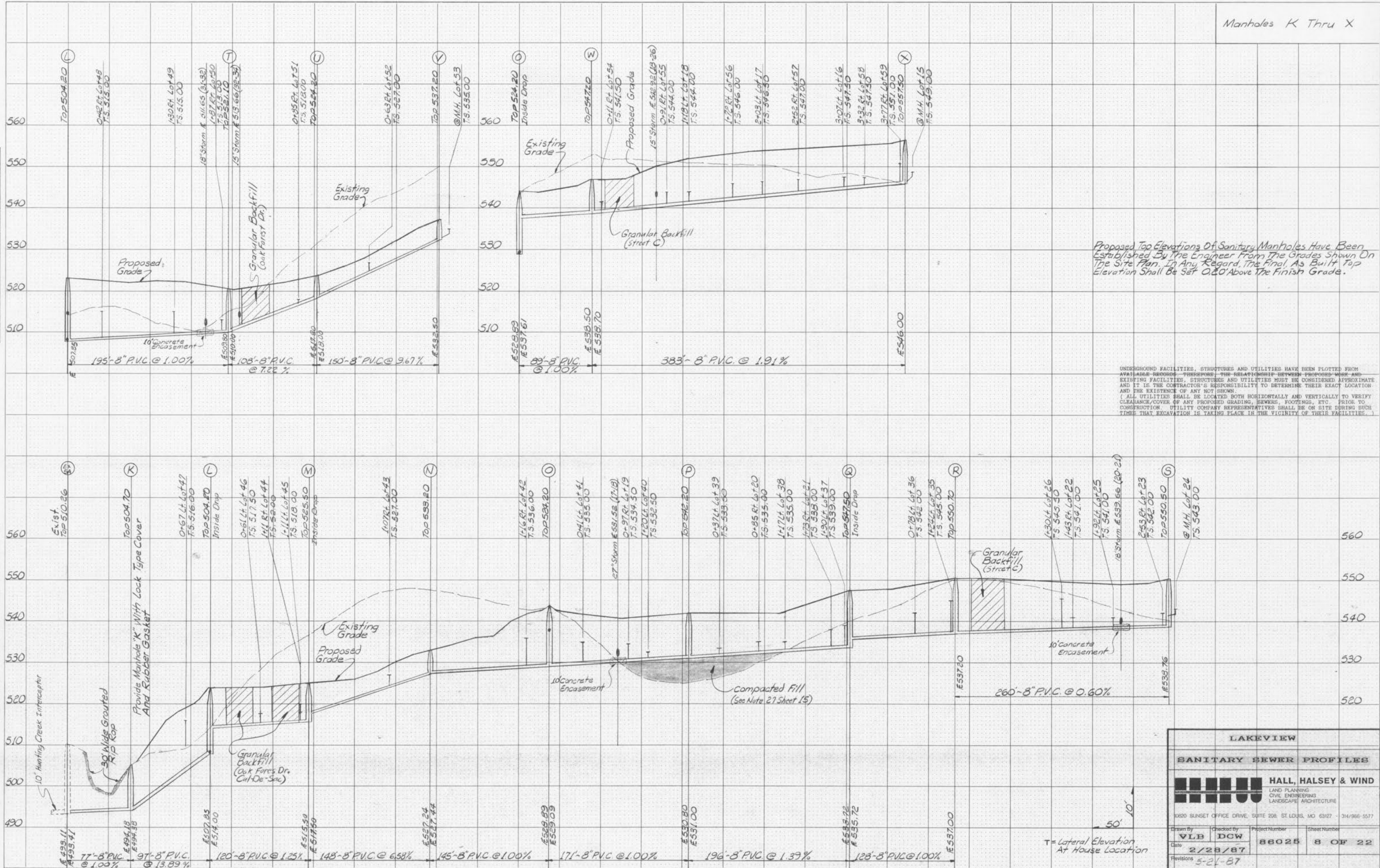


DATE	
BY	
REVIEWED	
PLOTTED	
TEMPLATE	
NOTE BOOK	
NO.	
AREAS	
CHECKED	

DATE	
BY	
REVIEWED	
PLOTTED	
TEMPLATE	
NOTE BOOK	
NO.	
AREAS	
CHECKED	



Manholes K Thru X

Proposed Top Elevations Of Sanitary Manholes Have Been Established By The Engineer From The Grades Shown On The Site Plan. In Any Regard, The Final As Built Top Elevation Shall Be Set 0.20' Above The Finish Grade.

UNDERGROUND FACILITIES, STRUCTURES AND UTILITIES HAVE BEEN PLOTTED FROM AVAILABLE RECORDS. THEREFORE, THE RELATIONSHIP BETWEEN PROPOSED WORK AND EXISTING FACILITIES, STRUCTURES AND UTILITIES MUST BE CONSIDERED APPROXIMATE AND IT IS THE CONTRACTOR'S RESPONSIBILITY TO DETERMINE THEIR EXACT LOCATION AND THE EXISTENCE OF ANY NOT SHOWN. ALL UTILITIES SHALL BE LOCATED BOTH HORIZONTALLY AND VERTICALLY TO VERIFY CLEARANCE COVER OF ANY PROPOSED GRADING, SEWERS, FOOTINGS, ETC. PRIOR TO CONSTRUCTION. UTILITY COMPANY REPRESENTATIVES SHALL BE ON SITE DURING SUCH TIME THAT EXCAVATION IS TAKING PLACE IN THE VICINITY OF THEIR FACILITIES.

LAKEVIEW

SANITARY SEWER PROFILES

HALL, HALSEY & WIND
LAND PLANNING
CIVIL ENGINEERING
LANDSCAPE ARCHITECTURE

10220 SUNSET OFFICE DRIVE, SUITE 208, ST. LOUIS, MO 63127 • 314/966-5577

Drawn By	Checked By	Project Number	Sheet Number
VLB	DCW	86025	8 OF 22
Date	Revisions		
2/23/87	5-21-87		