



CARL D. & KATHLEEN LASK 791/463
 UNINCORPORATED
 ST. CHARLES COUNTY

NOTE: NOT FOR CONSTRUCTION-
 FOR DRAINAGE AREAS ONLY!
 SEE SHEET 2 FOR CONSTRUCTION.

SEE SHEET 20 FOR DRAINAGE MAP
 NORTH OF LAKEVIEW #2

CITY OF O'FALLON

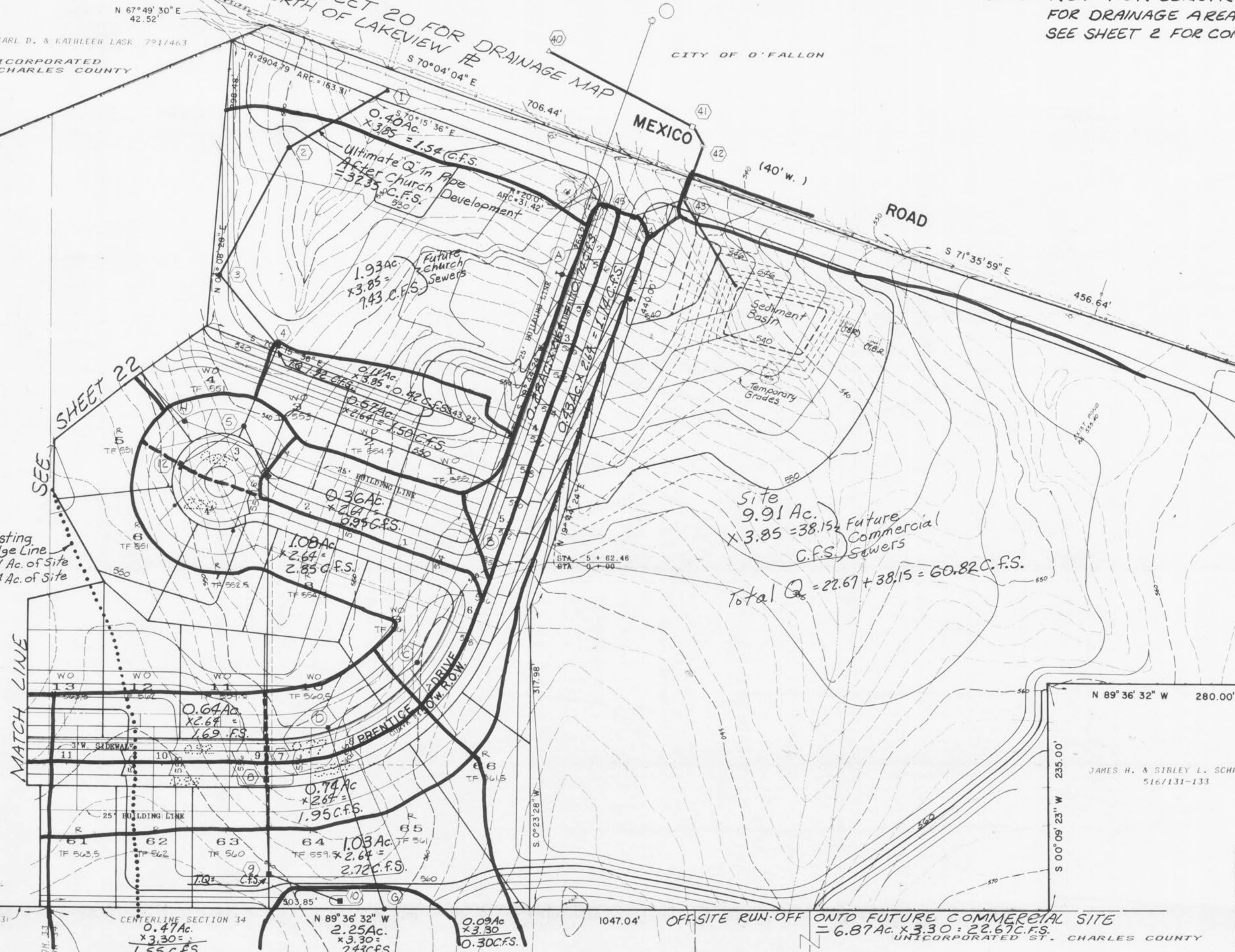
MEXICO ROAD

ROAD

KNAUST (40' w.) ROAD

Existing Ridge Line
 East = 21.51 Ac. of Site
 West = 16.64 Ac. of Site

Site
 9.91 Ac.
 x 3.85 = 38.15 Future
 Commercial
 C.F.S. Sewers
 Total Q₂ = 22.67 + 38.15 = 60.82 C.F.S.



SHEET 22

MATCH LINE

CENTERLINE SECTION 33

CENTERLINE SECTION 34

1047.04'

OFF-SITE RUN-OFF ONTO FUTURE COMMERCIAL SITE = 6.87 Ac. x 3.30 = 22.67 C.F.S.

JAMES H. & SIBLEY L. SCHRADER
 516/131-133

SEE SHEET 20 FOR OFF-SITE DRAINAGE MAP

GEORGE C. KARR, JR. & LUCILLE L. KARR 892/1808

ROBERT L. & MARY LOU JUNG 621/252 & 668/930

LAKEVIEW			
DRAINAGE AREA MAPS			
HALL, HALSEY & WIND LAND PLANNING CIVIL ENGINEERING LANDSCAPE ARCHITECTURE			
1020 SUNSET OFFICE DRIVE, SUITE 208, ST. LOUIS, MO 63127 - 314/966-5577			
Drawn By	Checked By	Project Number	Sheet Number
VLB	DCW	86025	21 OF 22
Date	2/28/87		
Revisions City 5-21-87			